

PETALUMA MARINA BUSINESS CENTER

755, 765 & 775 Baywood Drive | Petaluma, CA

Class "A" Suites For Lease from ±798 - 3,789 SF

www.PetalumaMarinaBusinessCenter.com

**CLICK HERE FOR
VIRTUAL TOUR**

RENT INCENTIVE!
765 Baywood - Suite 390
Details on page 4



EXCLUSIVELY MARKETED BY:

The Dowling-Bracco Team of JLL

707.421.2900 | www.DBREA.com | www.JLL.com



**BASIN STREET
PROPERTIES**

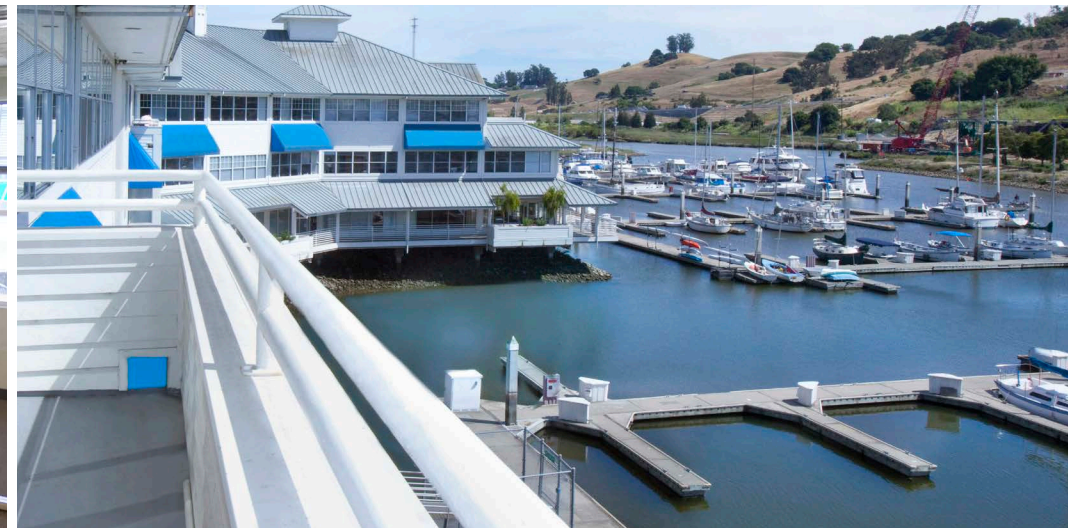
basin-street.com

PETALUMA MARINA BUSINESS CENTER

755, 765 & 775 Baywood Drive | Petaluma, CA

Class "A" Suites For Lease from ±798 - 3,789 SF

www.PetalumaMarinaBusinessCenter.com



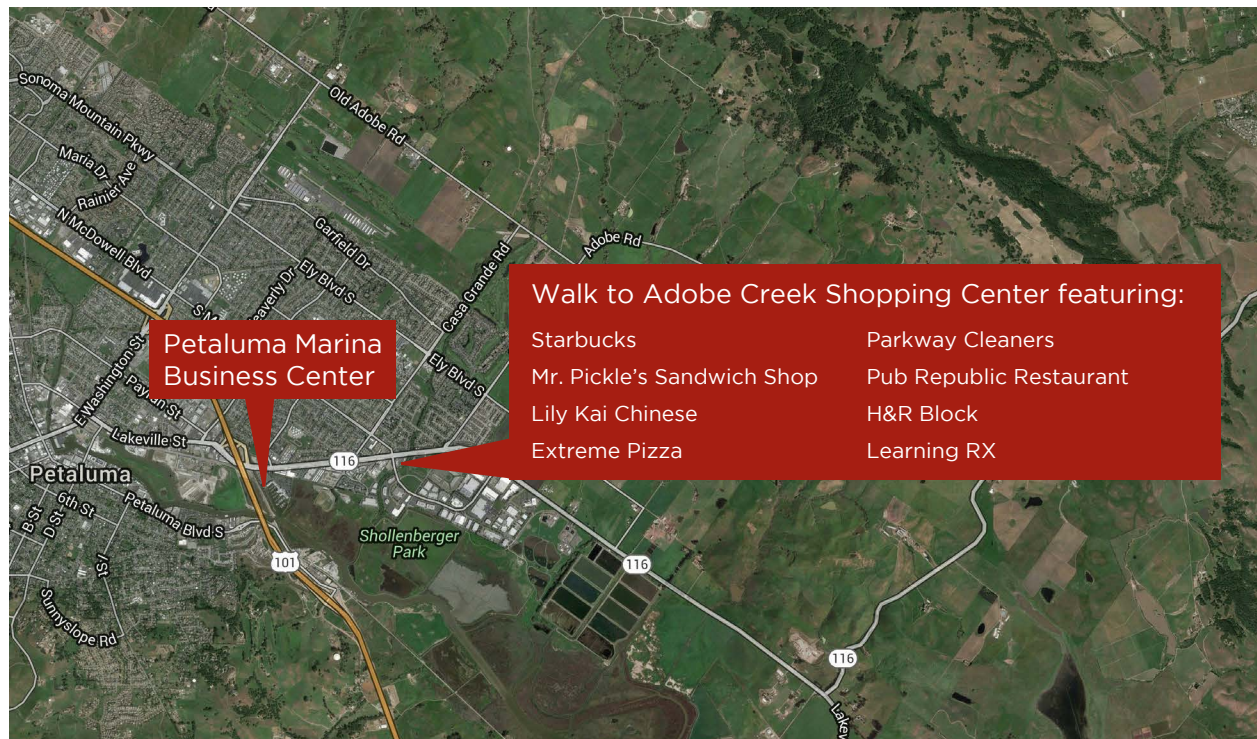
EXCLUSIVELY MARKETING BY:
The Dowling-Bracco Team of JLL
707.421.2900 | www.DBREA.com



BASIN STREET
PROPERTIES

©2019 Jones Lang LaSalle IP, Inc. All rights reserved. All information contained herein is from sources deemed reliable; however, no representation or warranty is made to the accuracy thereof. Jones Lang LaSalle Brokerage, Inc. Real Estate License#: 01856260

basin-street.com



The Marina Bean: On-Site Cafe

- Newly Refurbished Spaces – Ready for Immediate Occupancy
- Convenient Access & Visibility from Highways 101 and 116; 11 miles to Highway 37
- Outstanding Work Environment with Marina and Mountain Views
- Operable Windows & Card-Key Access System
- Abundant Parking
- On-Site Cafe
- Located Adjacent to Sheraton Hotel, Conference Center & Restaurant
- On-Site Property Management & Facility Engineer
- Wired with Comcast High-Speed Internet Connectivity
- Swift Decision-Making & Uncomplicated Negotiations by Local, Reputable Ownership



Beautiful Marina Views



To Schedule a Tour or for More Information, Please Contact The Dowling-Bracco Team of JLL | www.DBREA.com

TONY SARNO
 tony.sarno@am.jll.com
 (707) 217 7196
 RE License No: 01430933

GLEN DOWLING
 glen.dowling@am.jll.com
 (707) 227 7800
 RE License No: 0890450

JORDAN LAZOR
 jordan.lazor@am.jll.com
 (415) 299 6859
 RE Lic. No: 02011117

CHRIS TEWHILL
 chris.tewhill@am.jll.com
 (415) 299 6865
 RE Lic. No: 02034376

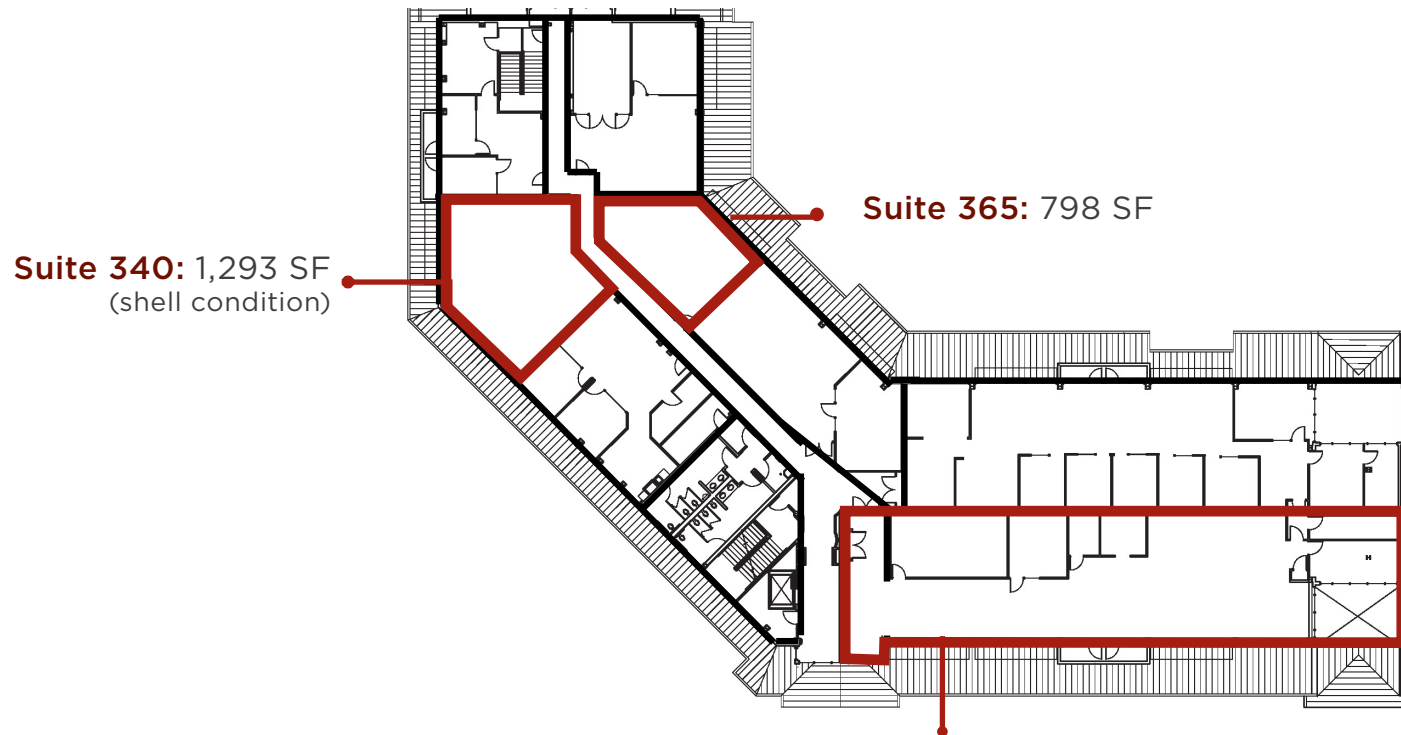


basin-street.com

755 BAYWOOD DRIVE

www.PetalumaMarinaBusinessCenter.com

THIRD FLOOR



RENT INCENTIVE

- Tenant to pay on 2,000 SF for the first three years of a five year lease

Suite 390: 3,789 SF



To Schedule a Tour or for More Information, Please Contact The Dowling-Bracco Team of JLL | www.DBREA.com

TONY SARNO
tony.sarno@am.jll.com
(707) 217 7196
RE License No: 01430933

GLEN DOWLING
glen.dowling@am.jll.com
(707) 227 7800
RE License No: 0890450

JORDAN LAZOR
jordan.lazor@am.jll.com
(415) 299 6859
RE Lic. No: 02011117

CHRIS TEWHILL
chris.tewhill@am.jll.com
(415) 299 6865
RE Lic. No: 02034376

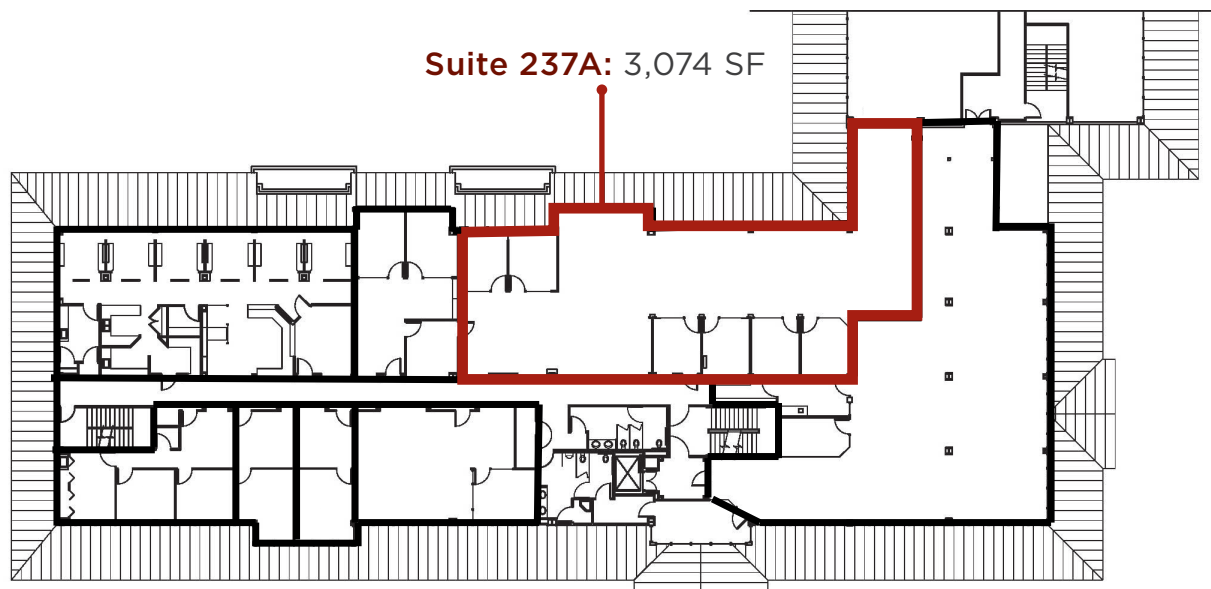


basin-street.com

765 BAYWOOD DRIVE

www.PetalumaMarinaBusinessCenter.com

SECOND FLOOR



To Schedule a Tour or for More Information, Please Contact The Dowling-Bracco Team of JLL | www.DBREA.com

TONY SARNO
tony.sarno@am.jll.com
(707) 217 7196
RE License No: 01430933

GLEN DOWLING
glen.dowling@am.jll.com
(707) 227 7800
RE License No: 0890450

JORDAN LAZOR
jordan.lazor@am.jll.com
(415) 299 6859
RE Lic. No: 02011117

CHRIS TEWHILL
chris.tewhill@am.jll.com
(415) 299 6865
RE Lic. No: 02034376



basin-street.com

775 BAYWOOD DRIVE

www.PetalumaMarinaBusinessCenter.com

FIRST FLOOR

Suite 109: 1,297 SF



Suite 100: 3,600 SF
(Sublease LED: 2/28/2022)

To Schedule a Tour or for More Information, Please Contact The Dowling-Bracco Team of JLL | www.DBREA.com



TONY SARNO

tony.sarno@am.jll.com
(707) 217 7196

RE License No: 01430933

GLEN DOWLING

glen.dowling@am.jll.com
(707) 227 7800

RE License No: 0890450

JORDAN LAZOR

jordan.lazor@am.jll.com
(415) 299 6859

RE Lic. No: 02011117

CHRIS TEWHILL

chris.tewhill@am.jll.com
(415) 299 6865

RE Lic. No: 02034376



basin-street.com