



# For Sale

## Property Overview

Space	9,728 SF
Land	1.69 Acres
Availability	Q4/2019
Zoning	Austin ETJ
Price	Call Broker

## Building Features

- Approximately 4,500 SF office, remainder warehouse
- Outside fenced yard
- Perimeter security fence

**15302 Marsha Street**  
Austin, Texas 78728

---

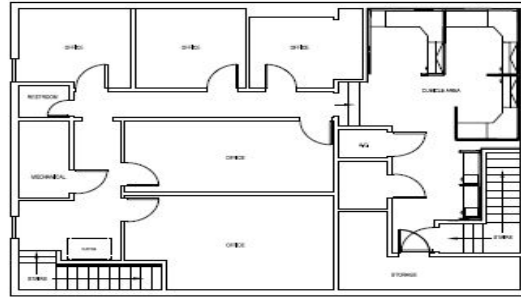
**Zane Cole**  
+1 512 225 2708  
[Zane.cole@am.jll.com](mailto:Zane.cole@am.jll.com)

[www.jll.com/austin](http://www.jll.com/austin)

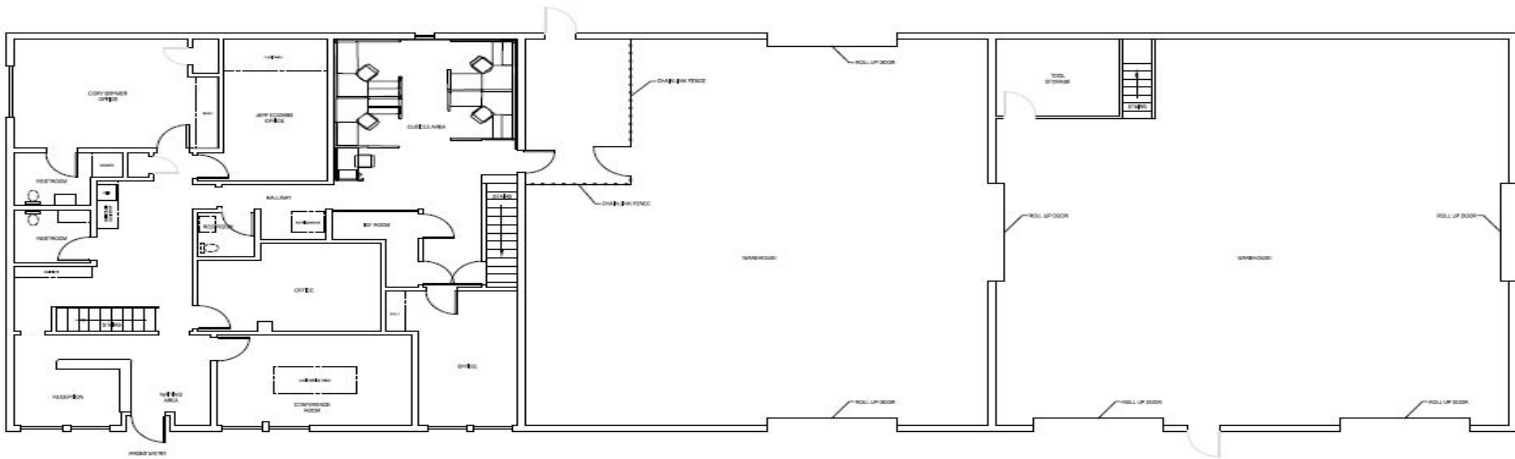
9,728 SF

15302 Marsha Street

For Sale



2<sup>nd</sup> Floor Plan



1<sup>st</sup> Floor Plan



**15302 Marsha Street**  
Austin, Texas 78728

**Zane Cole**  
+1 512 225 2708  
[zane.cole@am.jll.com](mailto:zane.cole@am.jll.com)

The information contained herein is obtained from sources believed to be reliable. However, Jones Lang LaSalle makes no guarantees, warranties or representations as to the completeness or accuracy thereof. The presentation of this property is submitted subject to errors, omissions, change of price or conditions, and is subject to prior sale, lease or withdrawal without notice



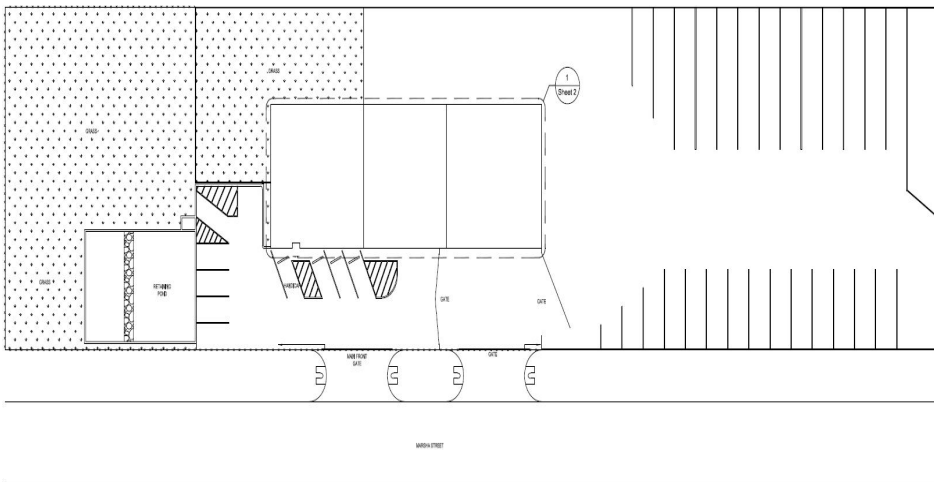
**9,728 SF**

**15302 Marsha Street**

*For Sale*



**Site Plan**



**15302 Marsha Street**  
Austin, Texas 78728

**Zane Cole**  
+1 512 225 2708  
[zane.cole@am.jll.com](mailto:zane.cole@am.jll.com)

The information contained herein is obtained from sources believed to be reliable. However, Jones Lang LaSalle makes no guarantees, warranties or representations as to the completeness or accuracy thereof. The presentation of this property is submitted subject to errors, omissions, change of price or conditions, and is subject to prior sale, lease or withdrawal without notice

