

**For  
Sublease**

**8,814 RSF | WAREHOUSE DISTRIBUTION**  
1675 Brandywine Avenue | Suite B | Chula Vista, CA 91911



- Corporate Image
- Approximately 8,814 SF Total
- 2 Truck Docks
- 1 Drive-In Truck Door
- Professional Offices:  
Reception, 3 Private, Break Room,  
Storage Room, 2 Restrooms
- Fire Sprinklers, 3.3/3,000 GPM

- Near I-805 & Hwy-905
- 15 Minutes From Downtown  
San Diego
- 10 Minutes From US-Mexico  
Border Crossing

**ASKING RATE: \$0.49 NNN**  
**LEASE EXPIRES 11/30/2016**

All information furnished regarding property for sale, rental or financing is from sources deemed reliable, but no warranty or representation is made to the accuracy thereof and same is submitted to errors, omissions, change of price, rental or other conditions prior to sale, lease or financing or withdrawal without notice. No liability of any kind is to be imposed on the broker herein.



Exclusively Listed By:

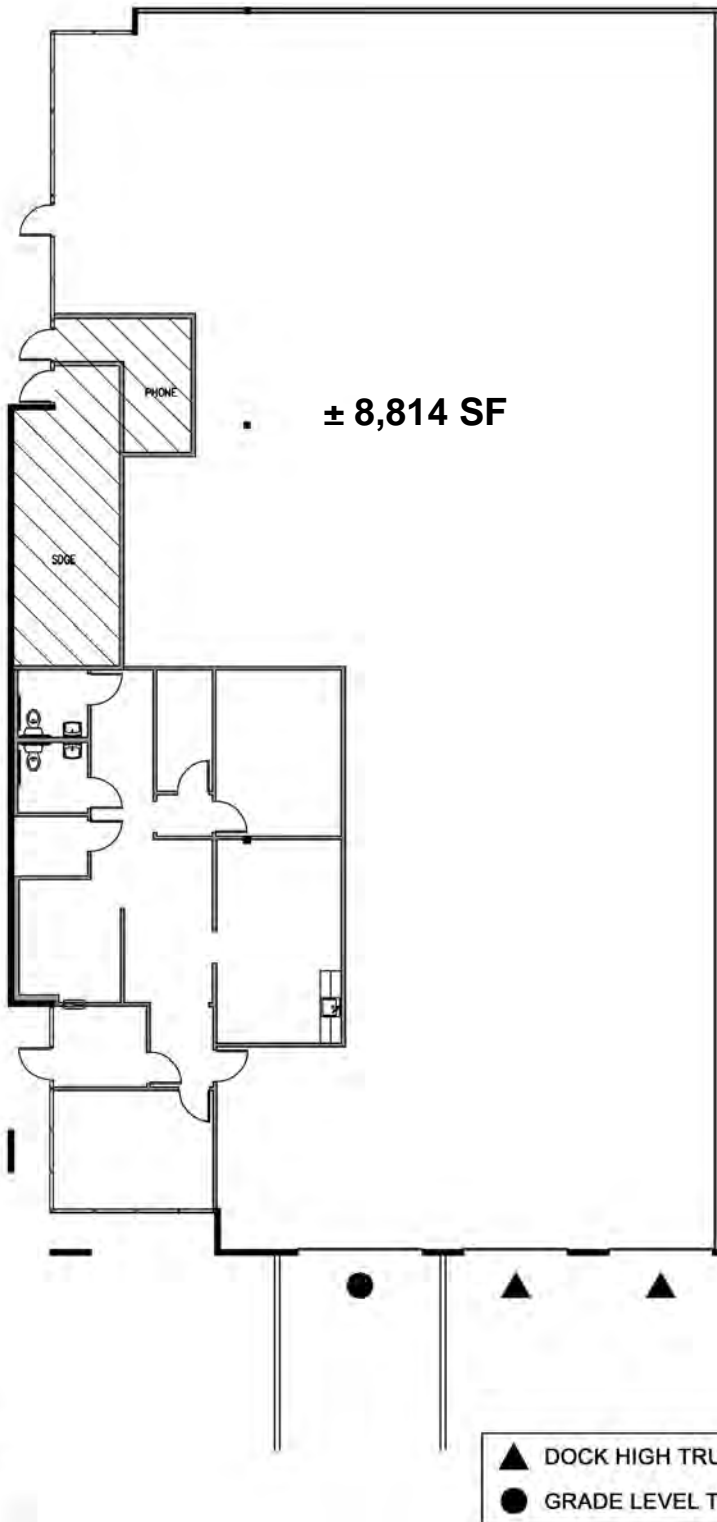
**CHARLES ADOLPHE | Principal**  
cadolphe@lee-associates.com | Lic No. 00915194  
Cell: 619.823.5340 | Office: 858.713.9319

lee-associates.com



**For  
Sublease**

**8,814 RSF | WAREHOUSE DISTRIBUTION**  
1675 Brandywine Avenue | Suite B | Chula Vista, CA 91911



All information furnished regarding property for sale, rental or financing is from sources deemed reliable, but no warranty or representation is made to the accuracy thereof and same is submitted to errors, omissions, change of price, rental or other conditions prior to sale, lease or financing or withdrawal without notice. No liability of any kind is to be imposed on the broker herein.



Exclusively Listed By:

CHARLES ADOLPHE | Principal  
cadolphe@lee-associates.com | Lic No. 00915194  
Cell: 619.823.5340 | Office: 858.713.9319

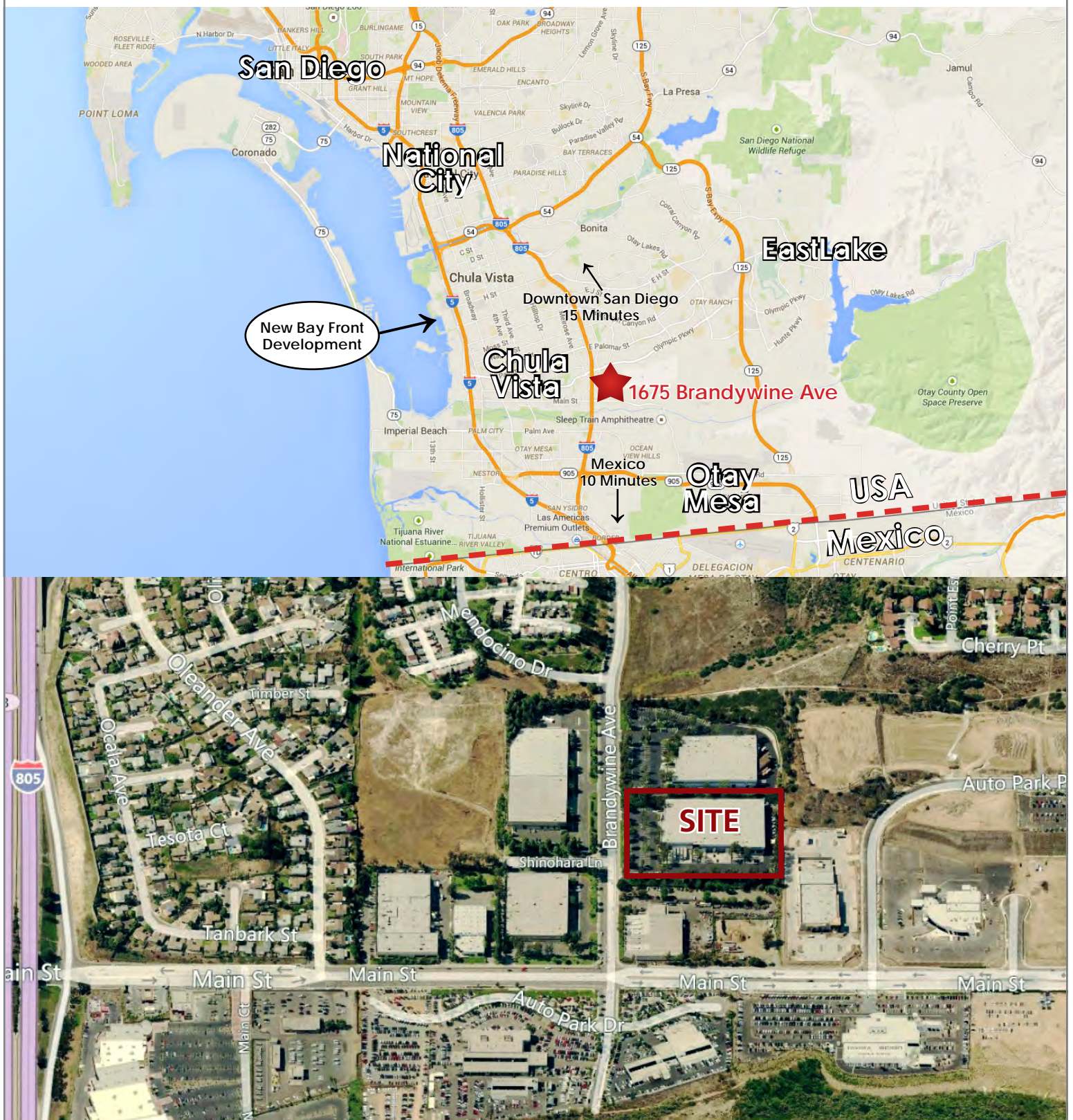
lee-associates.com





For  
Sublease

**8,814 RSF | WAREHOUSE DISTRIBUTION**  
1675 Brandywine Avenue | Suite B | Chula Vista, CA 91911



All information furnished regarding property for sale, rental or financing is from sources deemed reliable, but no warranty or representation is made to the accuracy thereof and same is submitted to errors, omissions, change of price, rental or other conditions prior to sale, lease or financing or withdrawal without notice. No liability of any kind is to be imposed on the broker herein.



Exclusively Listed By:

**CHARLES ADOLPHE** | Principal  
cadolphe@lee-associates.com | Lic No. 00915194  
Cell: 619.823.5340 | Office: 858.713.9319

lee-associates.com

