

## BRUNSWICK CROSSING ■ BRUNSWICK, MD

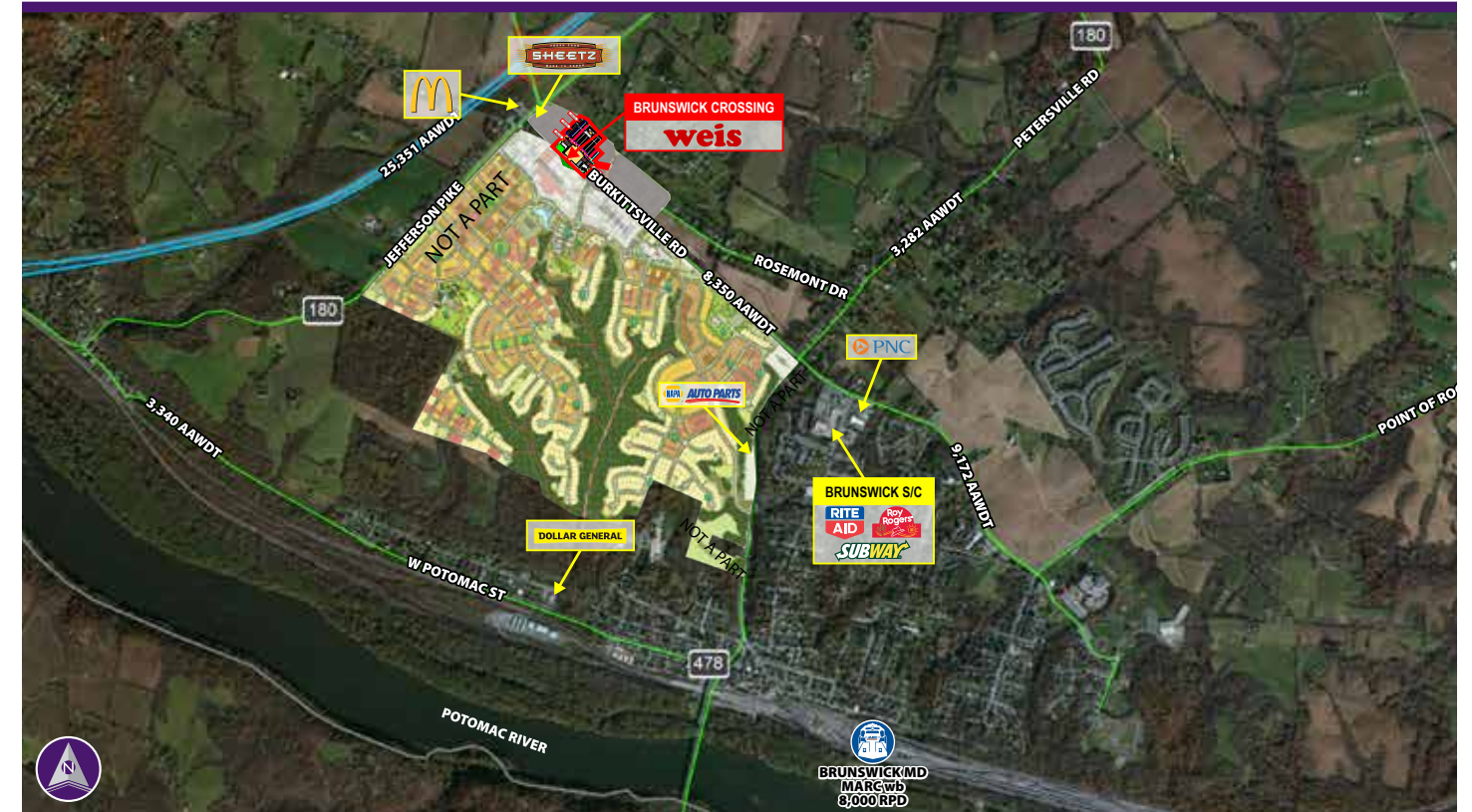


Information herein has been obtained from sources believed to be reliable. While we do not doubt its accuracy, we have not verified it and make no guarantee, warranty or representation about it. Independent confirmation of its accuracy and completeness is your responsibility. H&R Retail, Inc.

## Brunswick Crossing

BRUNSWICK, MD 21716

**Small Shop Space Available**



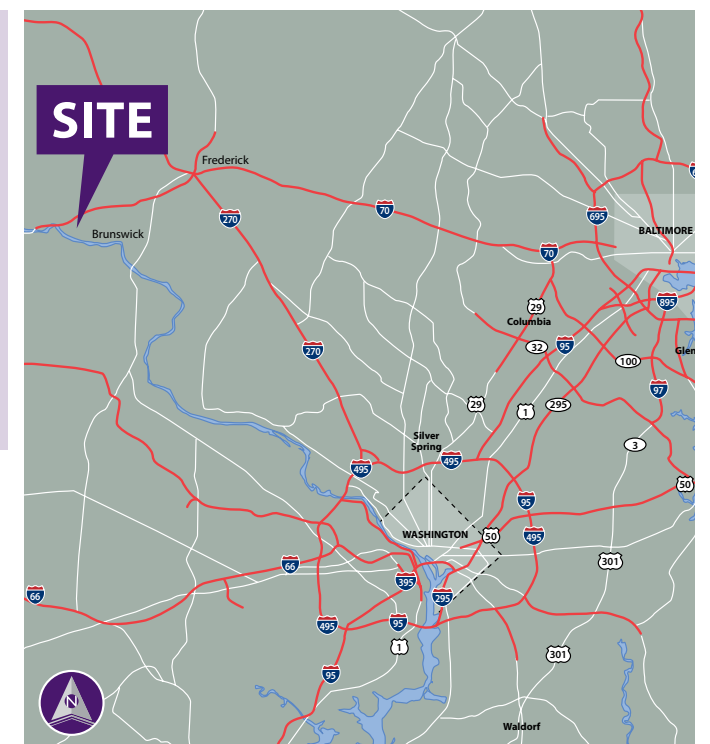
### Property Highlights

- Conveniently located at the intersection of Routes 340 & 17
- New 142,000 SF Weis Market anchored shopping center
- 218,000 SF of office, hotel and live/work units
- Serving the Brunswick, Frederick, Lovettsville and Shepherdstown areas
- 1,505 residential units approved and permitted. Over 80% built and sold

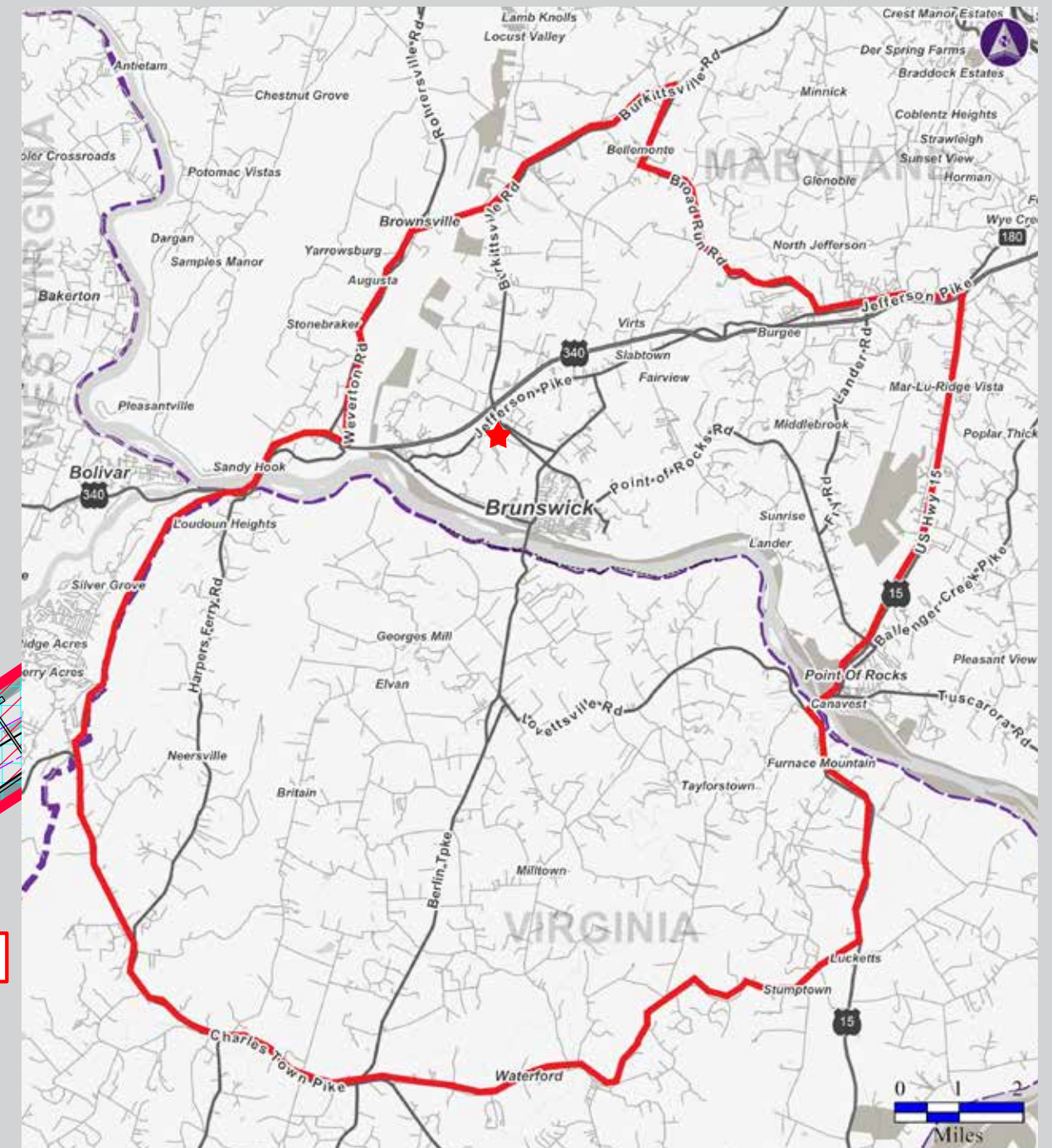
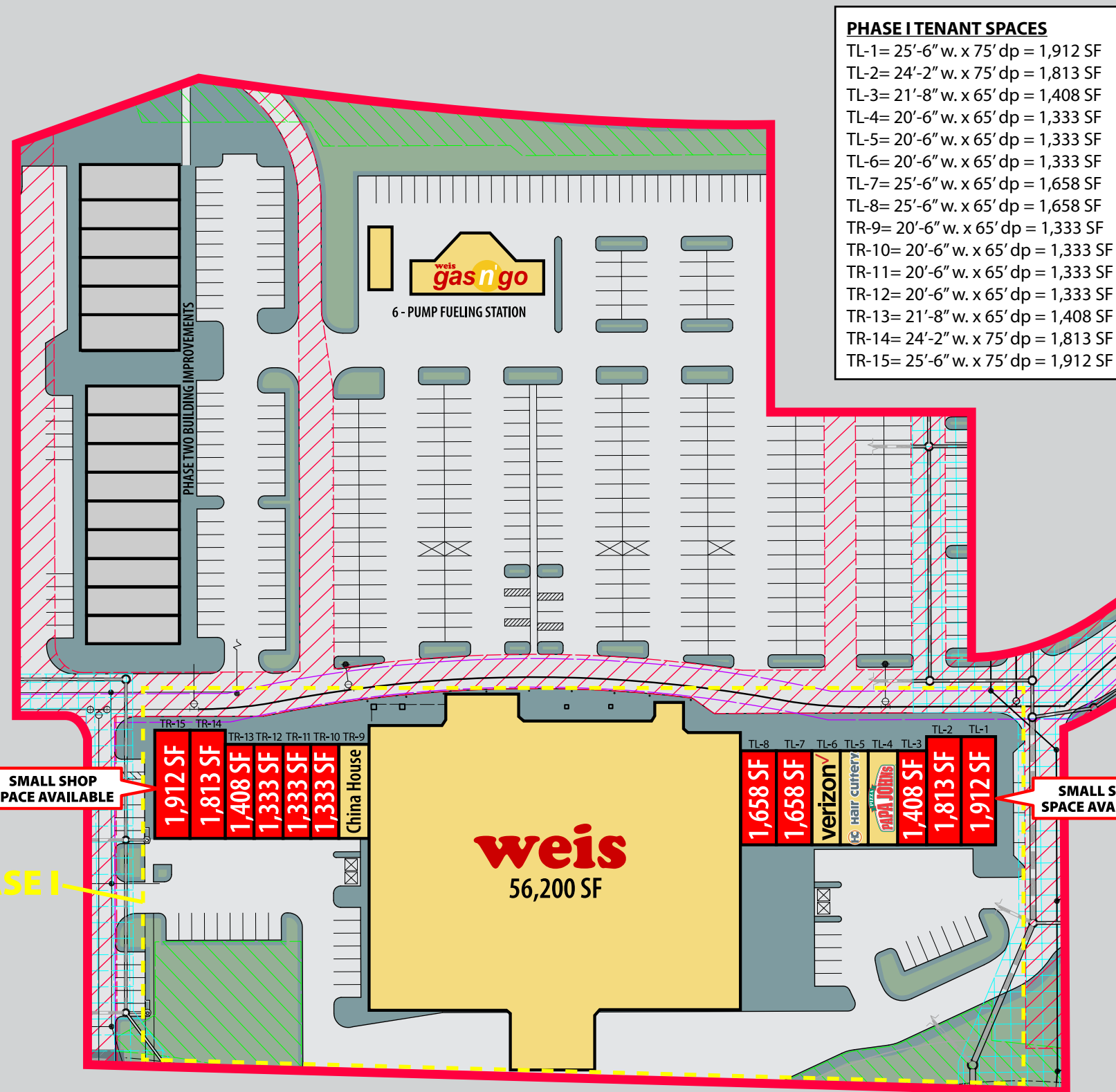
### Please Contact

**Ray R. Schupp**  
 240.482.3611 (direct)  
 301.656.3030 (office)  
[rschupp@hrretail.com](mailto:rschupp@hrretail.com)

**Bryan C. Davis**  
 202.438.7951 (cell)  
 240.482.3612 (direct)  
[bdavis@hrretail.com](mailto:bdavis@hrretail.com)



**BRUNSWICK CROSSING ■ BRUNSWICK, MD**



**Demographics (2017 Estimated)**

	Trade Area	3 Mile	5 Mile
Population	15,449	9,508	18,082
Average HH Income	\$112,818	\$94,386	\$109,635
Number of Households	5,463	3,453	6,518

