



PREMIER  
PROPERTIES  
COMMERCIAL  
REAL ESTATE

# FOR LEASE

## 575 HIGH STREET

Palo Alto, CA

Suite 320: ±1,840 Sq. Ft. Office  
Suite 110: ±2,080 Sq. Ft. Office

### BRAD EHIKIAN

Partner  
dre license #01736391  
☎ | 650.618.3001  
✉ | [brad.ehikian@prprop.com](mailto:brad.ehikian@prprop.com)

### JON GOLDMAN

Partner  
dre license #01295503  
☎ | 650.618.3003  
✉ | [jon.goldman@prprop.com](mailto:jon.goldman@prprop.com)

### JESSE EBNER

Vice President  
dre license #02055989  
☎ | 650.618.3017  
✉ | [jesse.ebner@prprop.com](mailto:jesse.ebner@prprop.com)

# PROPERTY DESCRIPTION

- ▶ Class A Building with Prime Downtown Palo Alto Location
- ▶ Elevator Access
- ▶ Two Blocks from Caltrain Station
- ▶ Surrounded by Downtown Amenities & Restaurants
- ▶ Pilates Studio on Ground Floor of Building
- ▶ Available Immediately

## Suite 110: ±2,080 Sq. Ft.

- ▶ Unique Ground Floor Office
- ▶ Modern, High-Quality Finishes
- ▶ Exposed Concrete Floors, Ceiling & Ductwork
- ▶ Open Layout with One Large Conference Room
- ▶ In-Suite Kitchenette

## Suite 320: ±1,840 Sq. Ft

- ▶ Newly-Finished Open Ceiling with Spiral Ductwork
- ▶ Large, Open Layout
- ▶ Two Privates / Meeting Rooms
- ▶ Natural Light
- ▶ In-Suite Kitchenette

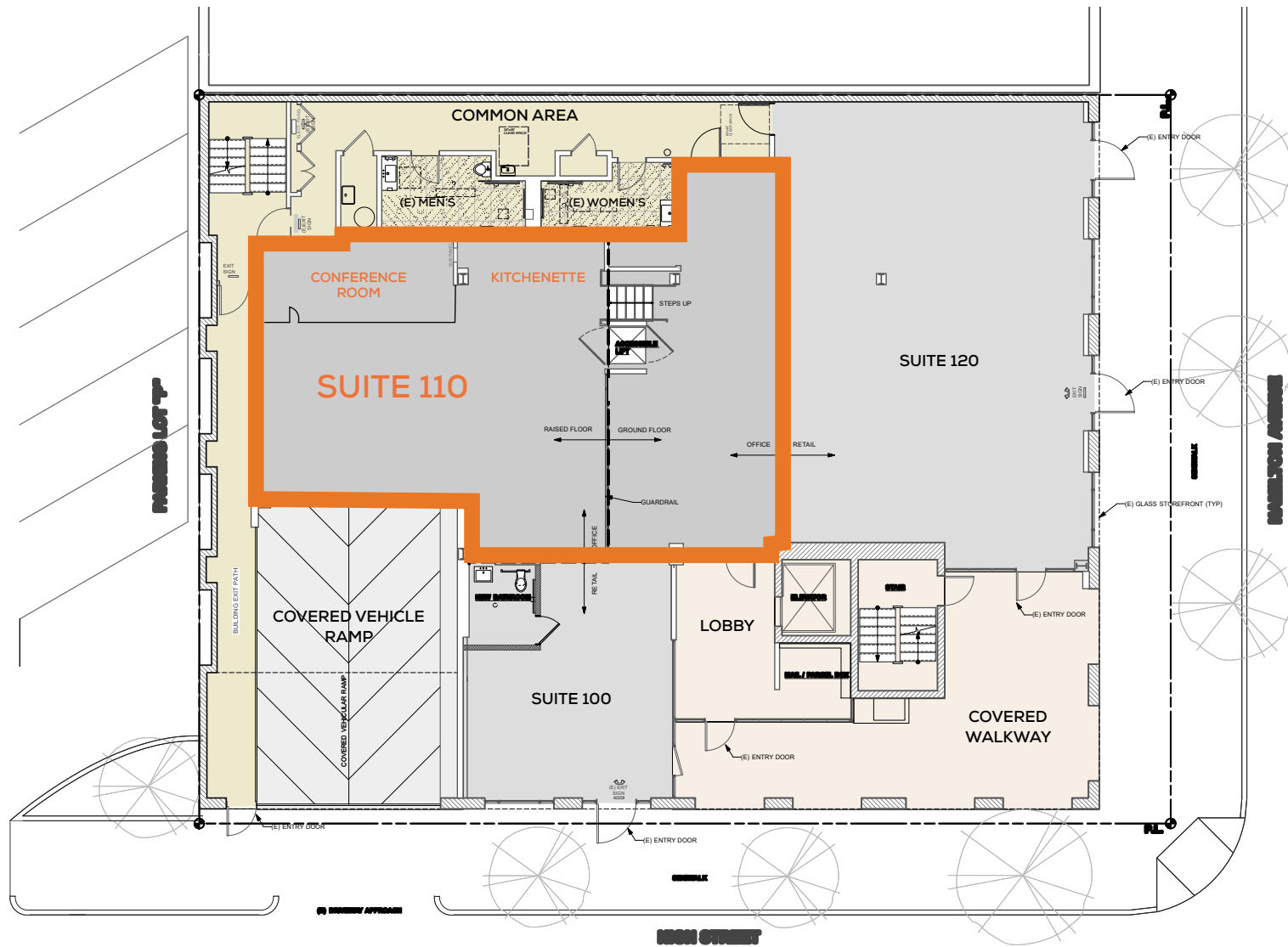


**BRAD EHIKIAN**  
Partner  
dre license #01736391  
☎ | 650.618.3001  
✉ | brad.ehikian@prprop.com

**JON GOLDMAN**  
Partner  
dre license #01295503  
☎ | 650.618.3003  
✉ | jon.goldman@prprop.com

**JESSE EBNER**  
Vice President  
dre license #02055989  
☎ | 650.618.3017  
✉ | jesse.ebner@prprop.com

# SUITE 110 FLOOR PLAN



MAY NOT BE ACCURATE / TO SCALE

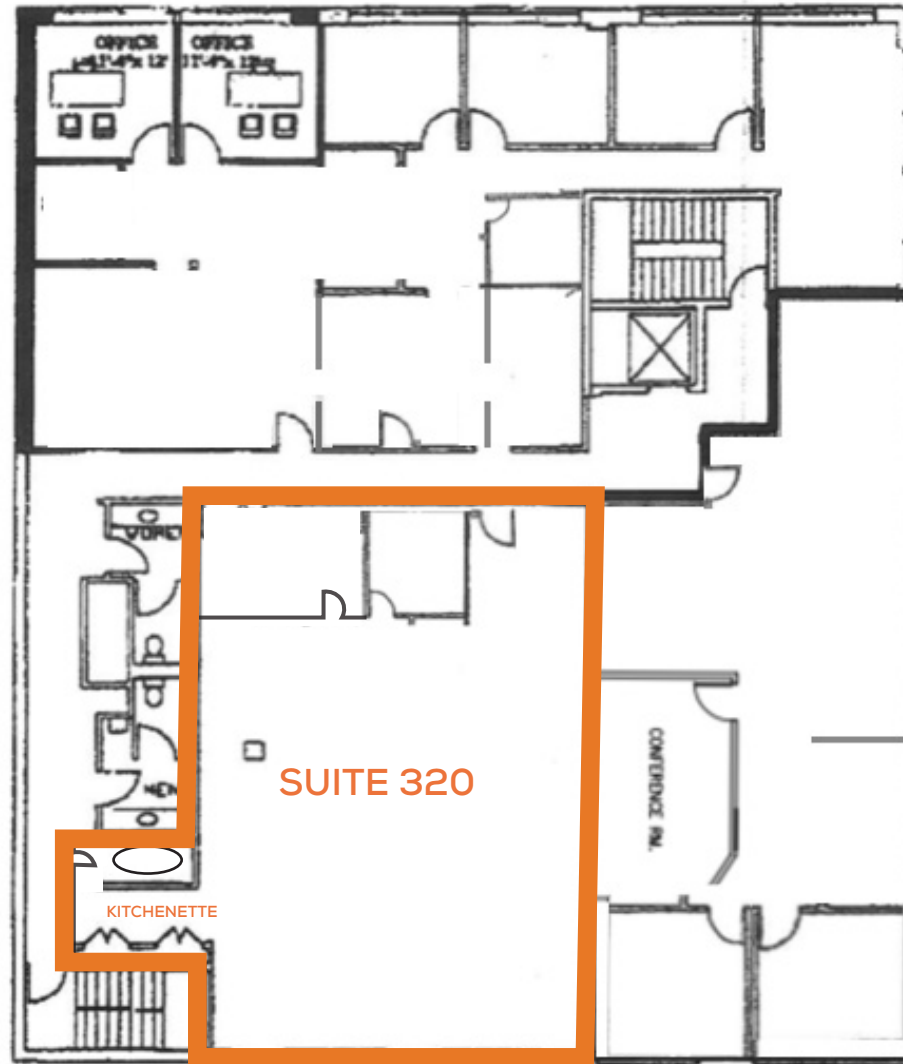


**BRAD EHIKIAN**  
Partner  
dre license #01736391  
☎ | 650.618.3001  
✉ | brad.ehikian@prprop.com

**JON GOLDMAN**  
Partner  
dre license #01295503  
☎ | 650.618.3003  
✉ | jon.goldman@prprop.com

**JESSE EBNER**  
Vice President  
dre license #02055989  
☎ | 650.618.3017  
✉ | jesse.ebner@prprop.com

# SUITE 320 FLOOR PLAN



MAY NOT BE ACCURATE / TO SCALE

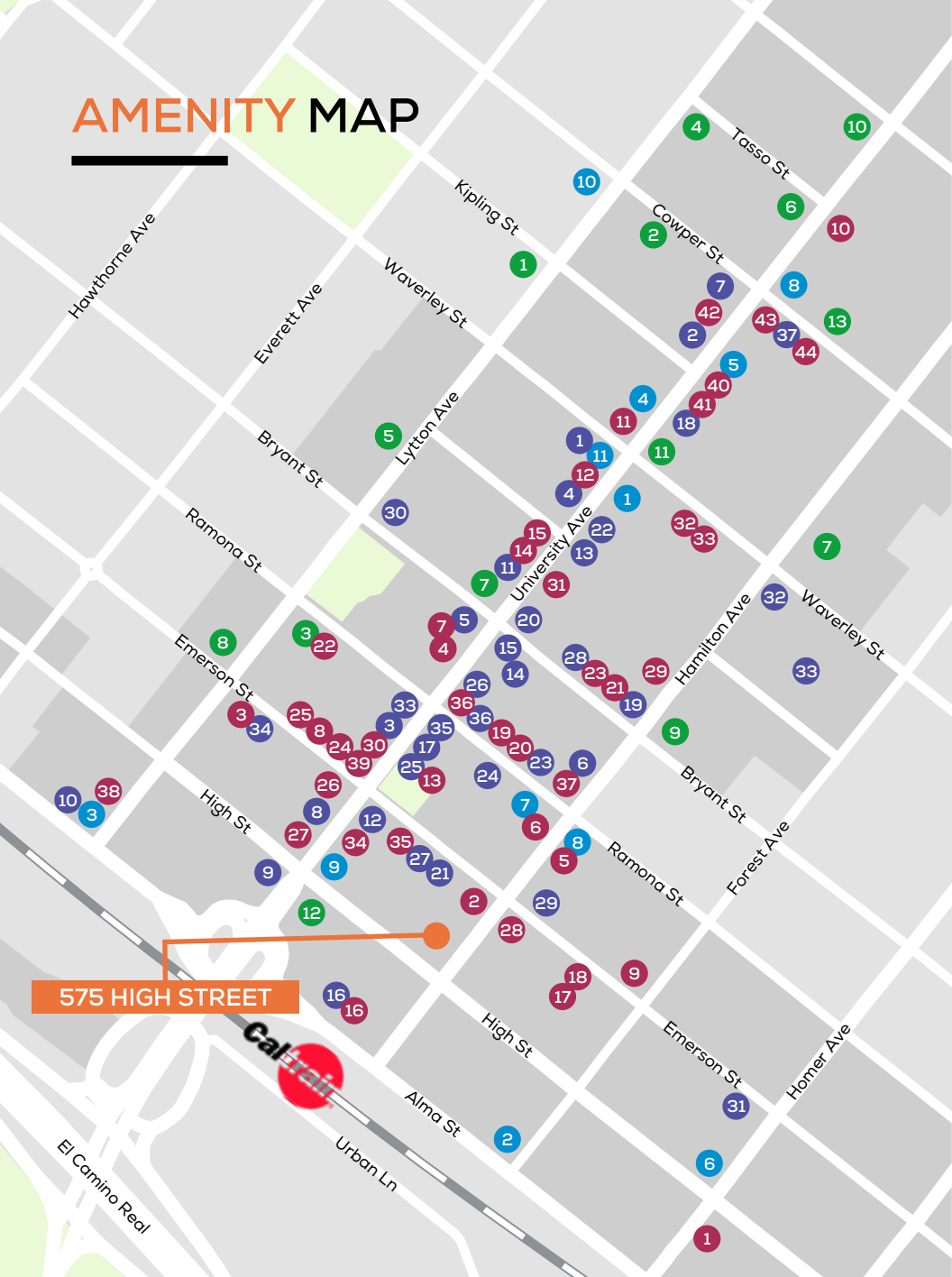


**BRAD EHIKIAN**  
Partner  
dre license #01736391  
☎ | 650.618.3001  
✉ | brad.ehikian@prprop.com

**JON GOLDMAN**  
Partner  
dre license #01295503  
☎ | 650.618.3003  
✉ | jon.goldman@prprop.com

**JESSE EBNER**  
Vice President  
dre license #02055989  
☎ | 650.618.3017  
✉ | jesse.ebner@prprop.com

# AMENITY MAP



## SHOPPING / SERVICES

- 1 B8ta Palo Alto
- 2 Footwear Etc
- 3 Verizon
- 4 Design Within Reach
- 5 Restoration Hardware
- 6 Shinola
- 7 Sprint Store
- 8 Palo Alto Bicycles
- 9 Natural Mattress Store
- 10 E-bike Annex
- 11 Rejuvenation
- 12 West Elm
- 13 Apple Store
- 14 Jos. A. Banks
- 15 Keen Garage
- 16 Patagonia
- 17 Vans
- 18 lululemon
- 19 UPS Store
- 20 Walgreens
- 21 Bells Books
- 22 CVS
- 23 Warby Parker
- 24 Good Vibrations
- 25 Nest Bedding
- 26 The Shade Store
- 27 Mac's Smoke Shop
- 28 Timothy Adams
- 29 Rumble Fitness
- 30 Form Fitness
- 31 Whole Foods
- 32 US Postal Service
- 33 Stanford Theatre
- 34 Aquarius Theatre
- 35 Juut Salon
- 36 Edge Hair Salon
- 37 Garden Court

## RESTAURANTS

- 1 Saint Michael Alley
- 2 Palo Alto Creamery
- 3 Evvia
- 4 Orens Hummus
- 5 Reposado
- 6 Osteria
- 7 Local Union
- 8 Rangoon Ruby
- 9 Pizza Delfina
- 10 Tamarine
- 11 Yayoi Palo Alto
- 12 Crepevine
- 13 Pizza My Heart
- 14 La Strada
- 15 Joya
- 16 Pampas
- 17 Tacolicious
- 18 Dan Gordon's
- 19 Nola
- 20 The Old Pro
- 21 Zola
- 22 Bird Dog
- 23 Ramen Nagi
- 24 Steam
- 25 Patxis
- 26 Wahlburgers
- 27 Lemonade
- 28 Nobu
- 29 Curry Up Now
- 30 Subway
- 31 SliderBar
- 32 Ethlys Fancy
- 33 Tai Pan
- 34 Sprout Café
- 35 Bare Bowls
- 36 Salt and Straw
- 37 sweetgreen
- 38 Darbar Indian Cuisine
- 39 Scoop
- 40 Sushirrito
- 41 Cream
- 42 Cielo
- 43 Gyros Gyros
- 44 Il Fornaio

## BANKS

- 1 Avid Bank
- 2 Boston Private
- 3 Comerica Bank
- 4 bank of america
- 5 Presidio Bank
- 6 Stanford Credit Union
- 7 Wells Fargo
- 8 City National Bank
- 9 Chase Bank
- 10 HSBC Bank
- 11 Union Bank
- 12 E\*TRADE Bank
- 13 Bank of The West

## COFFEE

- 1 Starbucks
- 2 Philz Coffee
- 3 Coupa Cafe
- 4 Café Venetia
- 5 Blue Bottle Café
- 6 Peets
- 7 Bistro Maxine
- 8 Joe & the Juice
- 9 Verve
- 10 Mademoiselle Colette
- 11 Paris Baguette



**BRAD EHIKIAN**  
 Partner  
 dre license #01736391  
 ☎ | 650.618.3001  
 ✉ | brad.ehikian@prprop.com

**JON GOLDMAN**  
 Partner  
 dre license #01295503  
 ☎ | 650.618.3003  
 ✉ | jon.goldman@prprop.com

**JESSE EBNER**  
 Vice President  
 dre license #02055989  
 ☎ | 650.618.3017  
 ✉ | jesse.ebner@prprop.com

# TRANSPORTATION AERIAL



# CITY PARKING LOT MAP



**BRAD EHIKIAN**  
Partner  
dre license #01736391  
☎ | 650.618.3001  
✉ | brad.ehikian@prprop.com

**JON GOLDMAN**  
Partner  
dre license #01295503  
☎ | 650.618.3003  
✉ | jon.goldman@prprop.com

**JESSE EBNER**  
Vice President  
dre license #02055989  
☎ | 650.618.3017  
✉ | jesse.ebner@prprop.com