

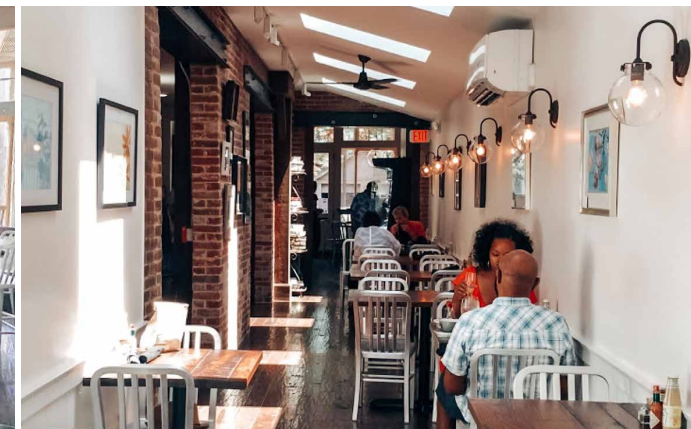
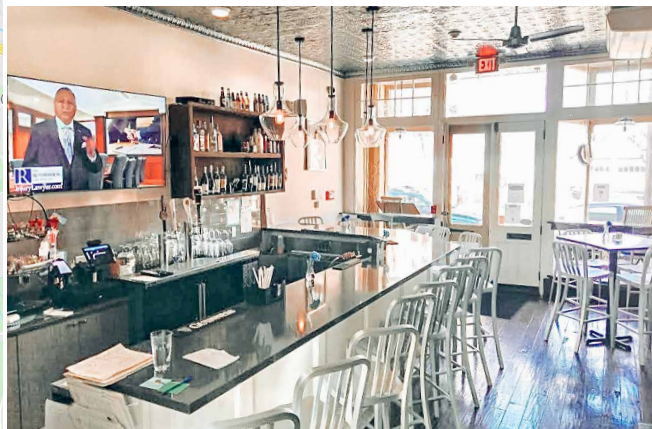
NEWLY RENOVATED RESTAURANT SPACE

414 Delaware St | New Castle, DE 19720 | New Castle County

FOR LEASE
\$6,500 / Month

PROPERTY FEATURES

- ✓ ± 2,000 SF Newly Renovated Space For Lease
- ✓ ± 1,500 - 2,000 SF Outdoor Space
- ✓ Located in the heart of historic New Castle, Delaware
- ✓ Lease rate includes Liquor License
- ✓ All FF&E included
- ✓ 22 seats in bar area, 34 seats in dining room & 40 seats outside
- ✓ Large outdoor patio with room for expansion



CONTACT US

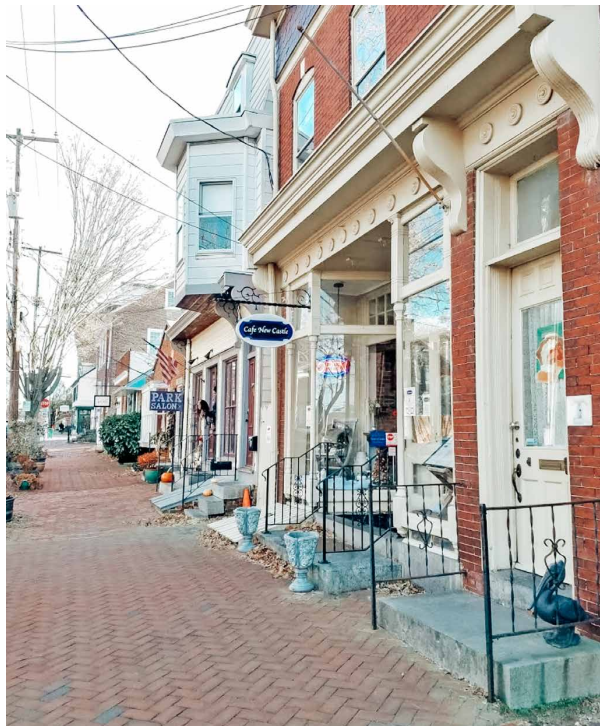
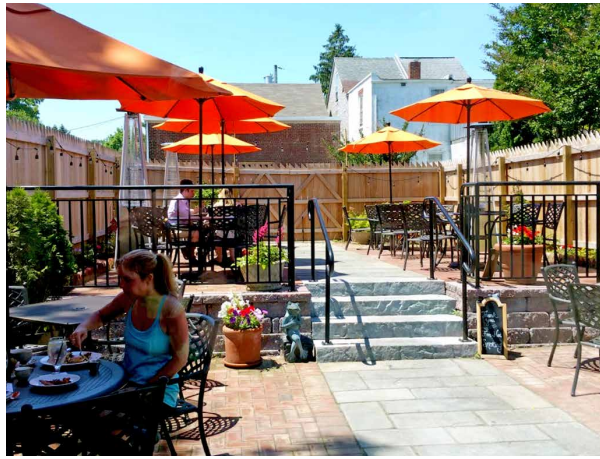
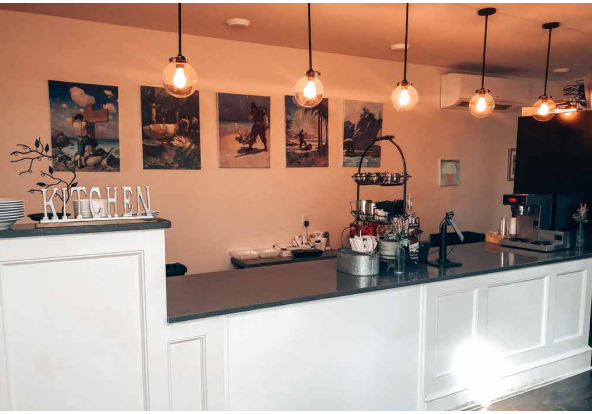
JAMES PINCKNEY
Phone: 610.359.1100
Cell: 610.453.2569
Email: jpinckney@zmcre.com

TESS SCOTT
Phone: 610.359.1100
Cell: 610.401.3453
Email: tscott@zmcre.com

1306 Wilmington Pike, Suite A-2
West Chester, PA 19382
610.359.1100
www.zmcre.com


ZOMMICK MCMAHON
COMMERCIAL REAL ESTATE

PROPERTY PHOTOS: 414 DELAWARE STREET, NEW CASTLE, DE 19720



CONTACT US

JAMES PINCKNEY
Phone: 610.359.1100
Cell: 610.453.2569
Email: jpinckney@zmcre.com

TESS SCOTT
Phone: 610.359.1100
Cell: 610.401.3453
Email: tscott@zmcre.com

1306 Wilmington Pike, Suite A-2
West Chester, PA 19382
610.359.1100
www.zmcre.com

SITE LOCATION AERIAL: 414 DELAWARE STREET, NEW CASTLE, DE 19720




ZOMMICK MCMAHON
COMMERCIAL REAL ESTATE

CONTACT US

JAMES PINCKNEY
Phone: 610.359.1100
Cell: 610.453.2569
Email: jpinckney@zmcre.com

TESS SCOTT
Phone: 610.359.1100
Cell: 610.401.3453
Email: tscott@zmcre.com

1306 Wilmington Pike, Suite A-2
West Chester, PA 19382
610.359.1100
www.zmcre.com

RETAIL MARKET AERIAL: 414 DELAWARE STREET, NEW CASTLE, DE 19720



CONTACT US

JAMES PINCKNEY
Phone: 610.359.1100
Cell: 610.453.2569
Email: jpinckney@zmcre.com

TESS SCOTT
Phone: 610.359.1100
Cell: 610.401.3453
Email: tscott@zmcre.com

1306 Wilmington Pike, Suite A-2
West Chester, PA 19382
610.359.1100
www.zmcre.com

ABOUT ZOMMICK McMAHON COMMERCIAL REAL ESTATE

Zommick McMahon Commercial Real Estate, Inc. has been a Metro Philadelphia Area staple since its inception in 1949. The Company was founded by Joseph Zommick, and continues today with Ryan McMahon and his highly experienced staff, whom are all results-oriented professionals.

SOME OF OUR SATISFIED CLIENTS:



CONTACT US

JAMES PINCKNEY
Phone: 610.359.1100
Cell: 610.453.2569
Email: jpinckney@zmcre.com

TESS SCOTT
Phone: 610.359.1100
Cell: 610.401.3453
Email: tscott@zmcre.com

1306 Wilmington Pike, Suite A-2
West Chester, PA 19382
610.359.1100
www.zmcre.com

