



OFFICE FOR LEASE

Buggyworks

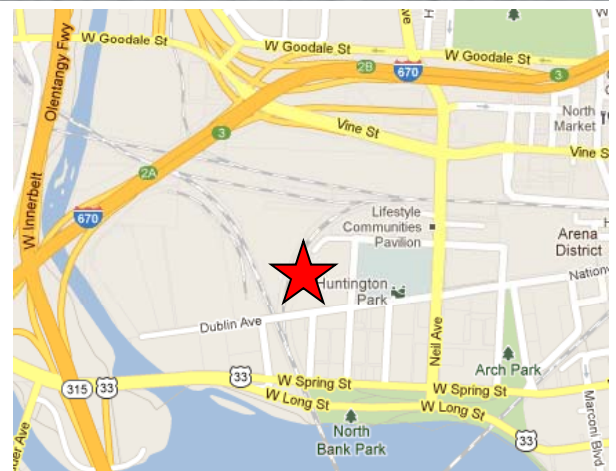
400 W. Nationwide Blvd.
Columbus, Ohio 43215

130,000 SF AVAILABLE



PREMISES	Historic Office Redevelopment
AVAILABLE	Approximately 130,000 SF
ASKING RATE	Negotiable

- Large floor plates
- Ample parking
- Unique tenant finish opportunities
- Walking distance to Huntington Park, Nationwide Arena, restaurants, movie theater and hotels
- Located by first class amenities and residential



FOR MORE INFORMATION, PLEASE CONTACT:

Wayne Harer, SIOR, CCIM
Executive Vice President
(614) 883-1051
wharer@continental-realty.com

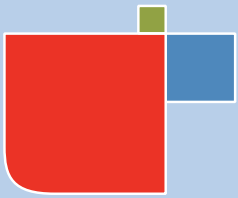
Ken Isenbarger, SIOR
Senior Vice President
(614) 883-1044
kisenbarger@continental-realty.com

**CONTINENTAL REALTY /
CUSHMAN & WAKEFIELD ALLIANCE**
150 E. Broad Street, Suite 500
Columbus, OH 43215
(614) 221-1800
www.continental-realty.com

The depiction in the included photograph of any person, entity, sign, logo or property, other than Continental Realty / Cushman & Wakefield Alliance (CR/C&W) client and the property offered by CR/C&W, is incidental only, and is not intended to connote any affiliation, connection, association, sponsorship or approval by or between that which is incidentally depicted and CR/C&W or its client.

This listing shall not be deemed an offer to lease, sublease or sell such property; and, in the event of any transaction for such property, no commission shall be earned by or payable to any cooperating broker except if otherwise provided pursuant to the express terms, rates and conditions of CR/C&W's agreement with its principal, if, as and when such commission (if any) is actually received from such principal. (A copy of the rates and conditions referred to above with respect to this property is available upon request.)





Buggyworks

400 W. Nationwide Blvd.
Columbus, Ohio 43215

OFFICE FOR LEASE

130,000 SF AVAILABLE



SCAN WITH
YOUR QR
READER APP
FOR MORE
INFORMATION



FOR MORE INFORMATION, PLEASE CONTACT:

Wayne Harer, SIOR, CCIM

Executive Vice President

(614) 883-1051

wharer@continental-realty.com

Ken Isenbarger, SIOR

Senior Vice President

(614) 883-1044

kisenbarger@continental-realty.com

**CONTINENTAL REALTY /
CUSHMAN & WAKEFIELD ALLIANCE**

150 E. Broad Street, Suite 500

Columbus, OH 43215

(614) 221-1800

www.continental-realty.com

The depiction in the included photograph of any person, entity, sign, logo or property, other than Continental Realty / Cushman & Wakefield Alliance (CR/C&W) client and the property offered by CR/C&W, is incidental only, and is not intended to connote any affiliation, connection, association, sponsorship or approval by or between that which is incidentally depicted and CR/C&W or its client.

This listing shall not be deemed an offer to lease, sublease or sell such property, and, in the event of any transaction for such property, no commission shall be earned by or payable to any cooperating broker except if otherwise provided pursuant to the express terms, rates and conditions of CR/C&W's agreement with its principal, if, as and when such commission (if any) is actually received from such principal. (A copy of the rates and conditions referred to above with respect to this property is available upon request.)





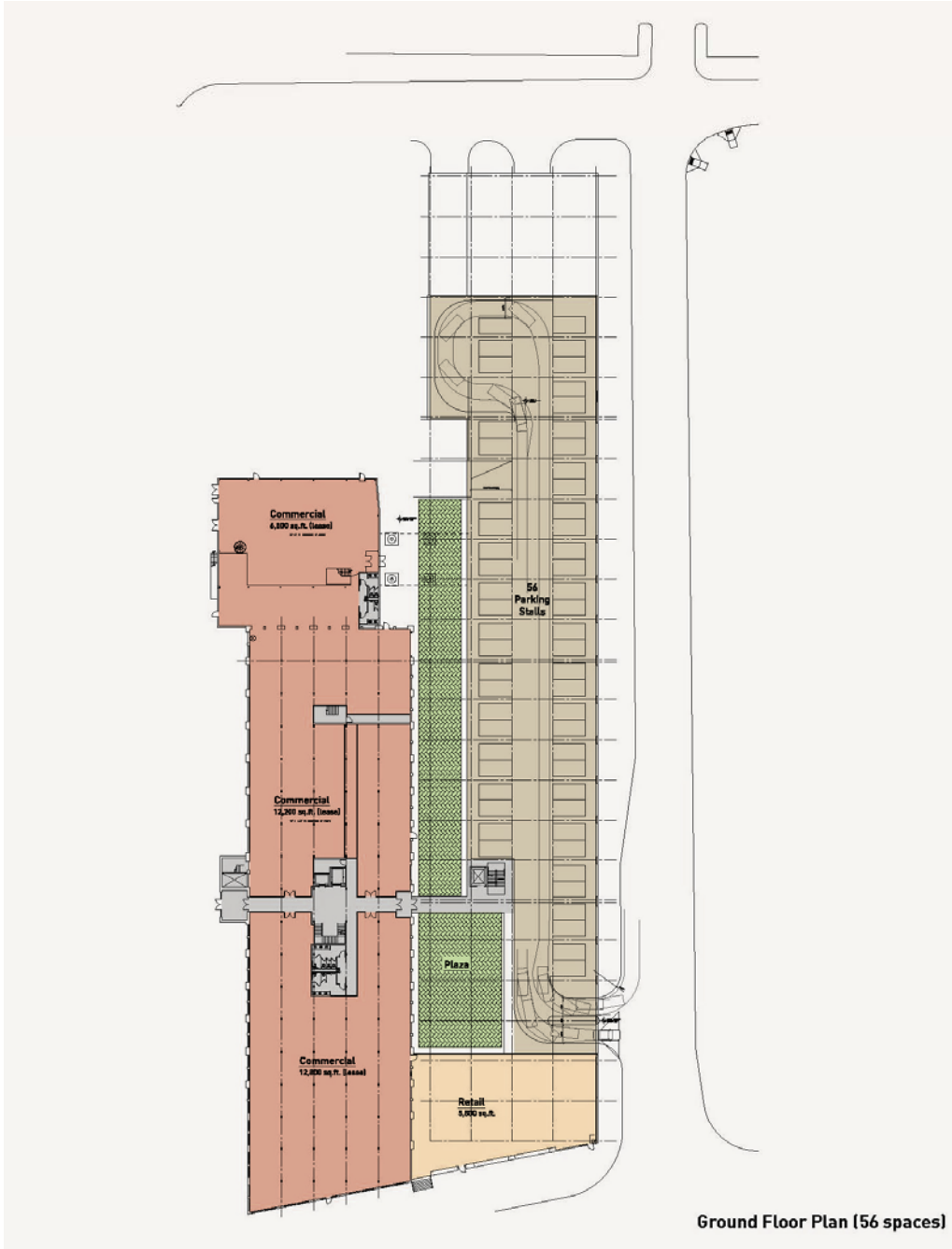
OFFICE FOR LEASE

Buggyworks

400 W. Nationwide Blvd.
Columbus, Ohio 43215

130,000 SF AVAILABLE

LEVEL 1



FOR MORE INFORMATION, PLEASE CONTACT:

Wayne Harer, SIOR, CCIM
Executive Vice President
(614) 883-1051
wharer@continental-realty.com

Ken Isenbarger, SIOR
Senior Vice President
(614) 883-1044
kisenbarger@continental-realty.com

**CONTINENTAL REALTY /
CUSHMAN & WAKEFIELD ALLIANCE**
150 E. Broad Street, Suite 500
Columbus, OH 43215
(614) 221-1800
www.continental-realty.com

The depiction in the included photograph of any person, entity, sign, logo or property, other than Continental Realty / Cushman & Wakefield Alliance (CR/C&W) client and the property offered by CR/C&W, is incidental only, and is not intended to connote any affiliation, connection, association, sponsorship or approval by or between that which is incidentally depicted and CR/C&W or its client.

This listing shall not be deemed an offer to lease, sublease or sell such property; and, in the event of any transaction for such property, no commission shall be earned by or payable to any cooperating broker except if otherwise provided pursuant to the express terms, rates and conditions of CR/C&W's agreement with its principal, if, as and when such commission (if any) is actually received from such principal. (A copy of the rates and conditions referred to above with respect to this property is available upon request.)





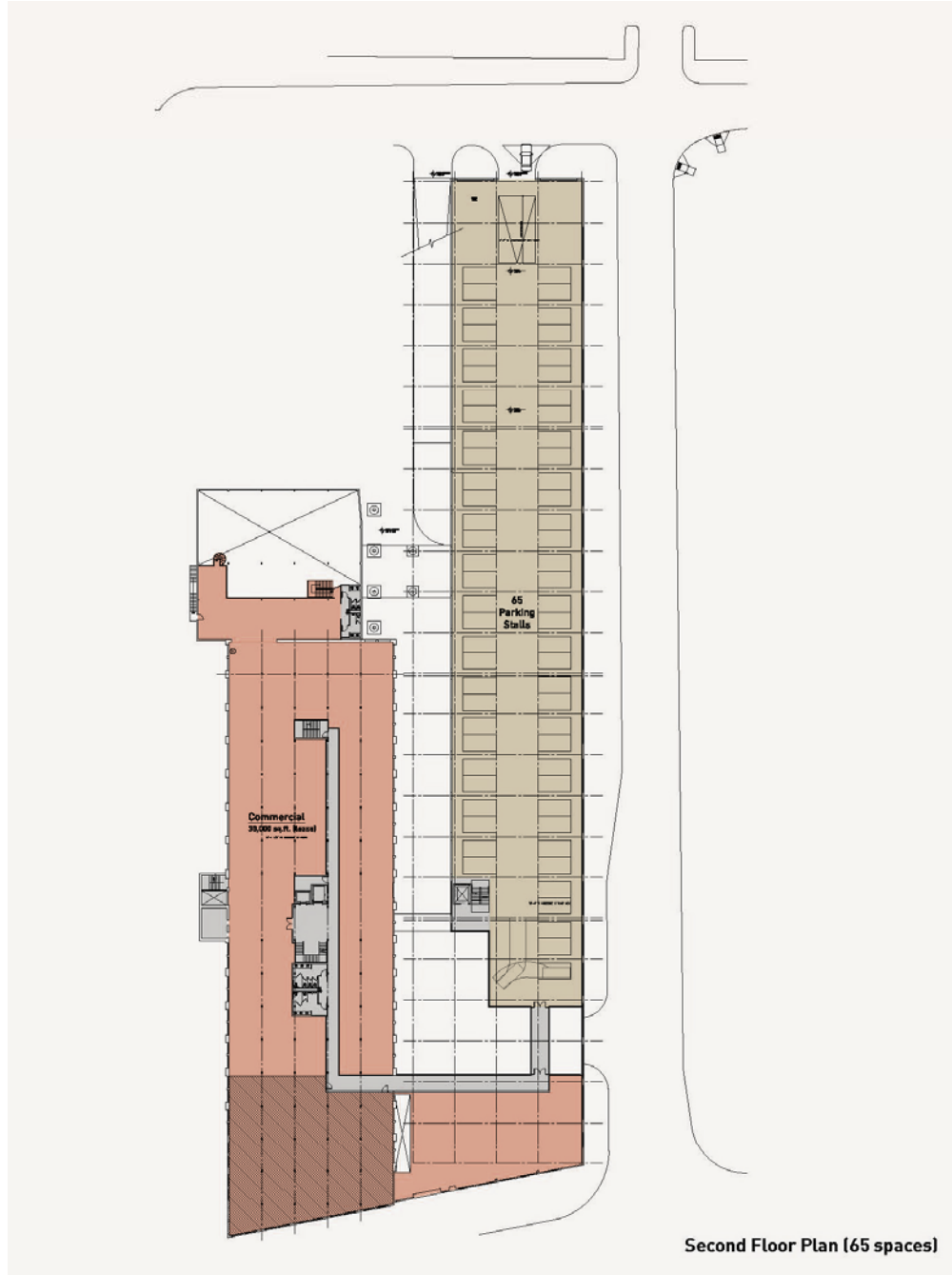
OFFICE FOR LEASE

Buggyworks

400 W. Nationwide Blvd.
Columbus, Ohio 43215

130,000 SF AVAILABLE

LEVEL 2



FOR MORE INFORMATION, PLEASE CONTACT:

Wayne Harer, SIOR, CCIM
Executive Vice President
(614) 883-1051
wharer@continental-realty.com

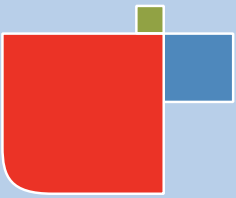
Ken Isenbarger, SIOR
Senior Vice President
(614) 883-1044
kisenbarger@continental-realty.com

**CONTINENTAL REALTY /
CUSHMAN & WAKEFIELD ALLIANCE**
150 E. Broad Street, Suite 500
Columbus, OH 43215
(614) 221-1800
www.continental-realty.com

The depiction in the included photograph of any person, entity, sign, logo or property, other than Continental Realty / Cushman & Wakefield Alliance (CR/C&W) client and the property offered by CR/C&W, is incidental only, and is not intended to connote any affiliation, connection, association, sponsorship or approval by or between that which is incidentally depicted and CR/C&W or its client.

This listing shall not be deemed an offer to lease, sublease or sell such property; and, in the event of any transaction for such property, no commission shall be earned by or payable to any cooperating broker except if otherwise provided pursuant to the express terms, rates and conditions of CR/C&W's agreement with its principal, if, as and when such commission (if any) is actually received from such principal. (A copy of the rates and conditions referred to above with respect to this property is available upon request.)





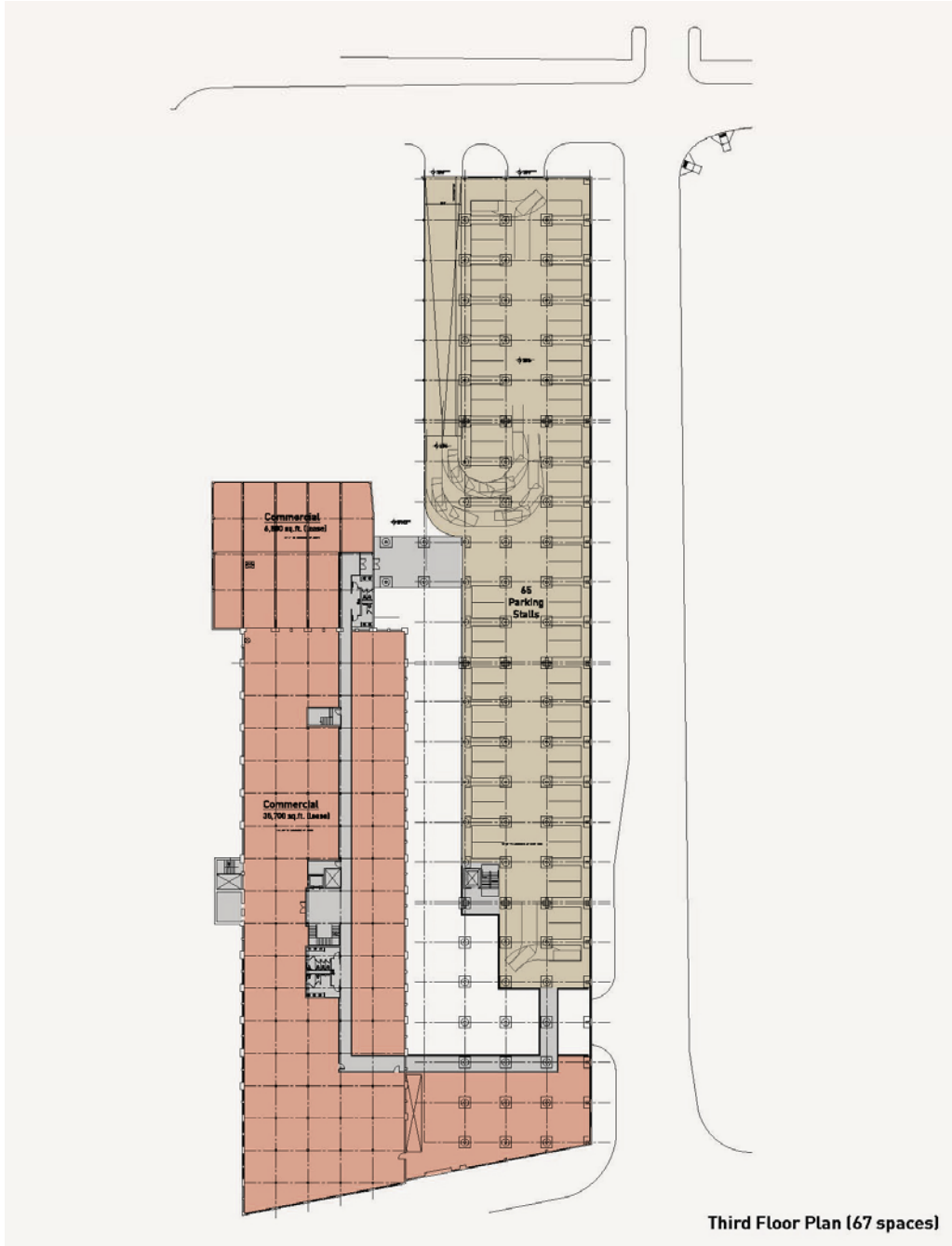
OFFICE FOR LEASE

Buggyworks

400 W. Nationwide Blvd.
Columbus, Ohio 43215

130,000 SF AVAILABLE

LEVEL 3



Third Floor Plan (67 spaces)

FOR MORE INFORMATION, PLEASE CONTACT:

Wayne Harer, SIOR, CCIM
Executive Vice President
(614) 883-1051
wharer@continental-realty.com

Ken Isenbarger, SIOR
Senior Vice President
(614) 883-1044
kisenbarger@continental-realty.com

**CONTINENTAL REALTY /
CUSHMAN & WAKEFIELD ALLIANCE**
150 E. Broad Street, Suite 500
Columbus, OH 43215
(614) 221-1800
www.continental-realty.com

The depiction in the included photograph of any person, entity, sign, logo or property, other than Continental Realty / Cushman & Wakefield Alliance (CR/C&W) client and the property offered by CR/C&W, is incidental only, and is not intended to connote any affiliation, connection, association, sponsorship or approval by or between that which is incidentally depicted and CR/C&W or its client.

This listing shall not be deemed an offer to lease, sublease or sell such property; and, in the event of any transaction for such property, no commission shall be earned by or payable to any cooperating broker except if otherwise provided pursuant to the express terms, rates and conditions of CR/C&W's agreement with its principal, if, as and when such commission (if any) is actually received from such principal. (A copy of the rates and conditions referred to above with respect to this property is available upon request.)





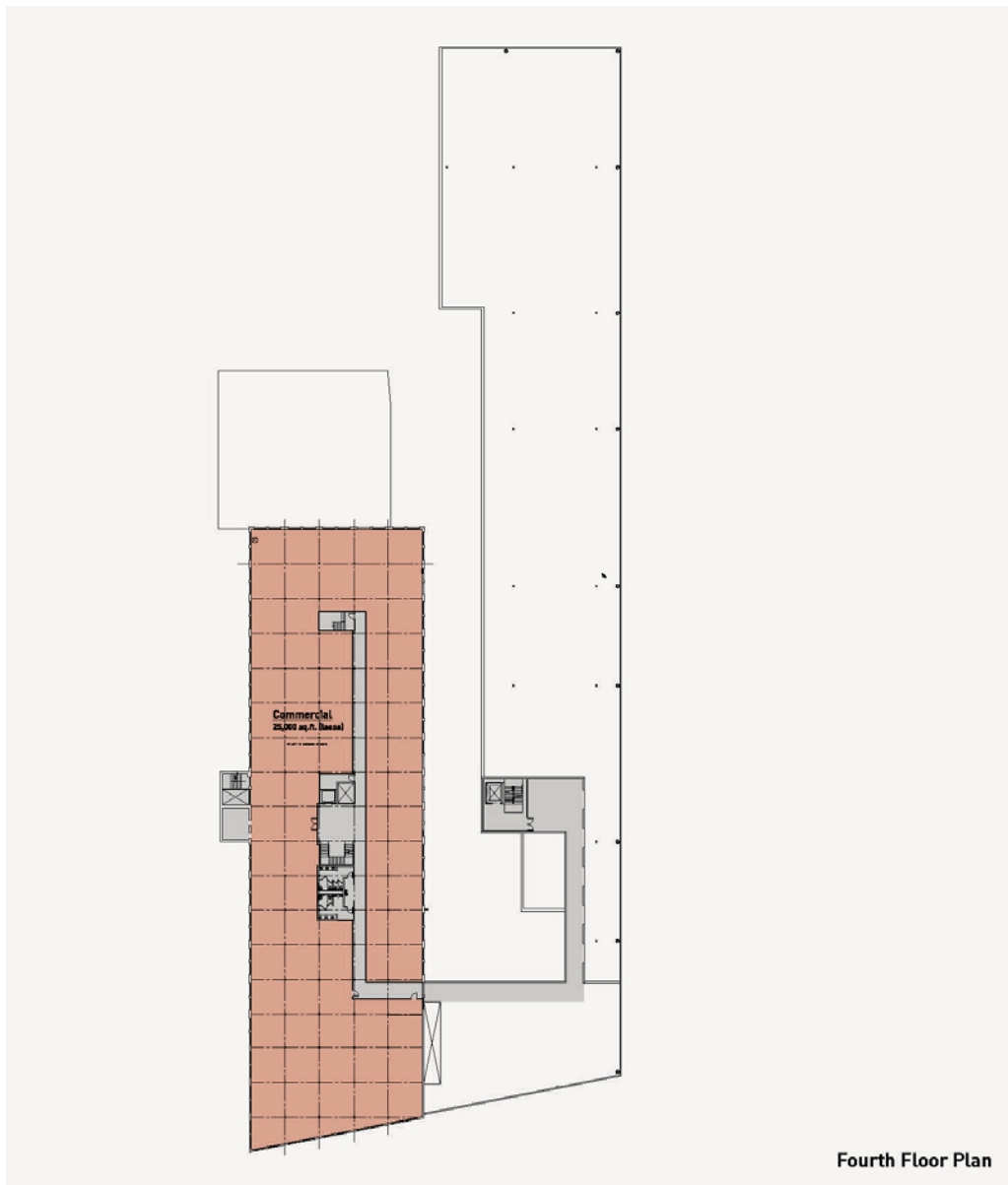
OFFICE FOR LEASE

Buggyworks

400 W. Nationwide Blvd.
Columbus, Ohio 43215

130,000 SF AVAILABLE

LEVEL 4



FOR MORE INFORMATION, PLEASE CONTACT:

Wayne Harer, SIOR, CCIM

Executive Vice President

(614) 883-1051

wharer@continental-realty.com

Ken Isenbarger, SIOR

Senior Vice President

(614) 883-1044

kisenbarger@continental-realty.com

**CONTINENTAL REALTY /
CUSHMAN & WAKEFIELD ALLIANCE**

150 E. Broad Street, Suite 500

Columbus, OH 43215

(614) 221-1800

www.continental-realty.com

The depiction in the included photograph of any person, entity, sign, logo or property, other than Continental Realty / Cushman & Wakefield Alliance (CR/C&W) client and the property offered by CR/C&W, is incidental only, and is not intended to connote any affiliation, connection, association, sponsorship or approval by or between that which is incidentally depicted and CR/C&W or its client.

This listing shall not be deemed an offer to lease, sublease or sell such property; and, in the event of any transaction for such property, no commission shall be earned by or payable to any cooperating broker except if otherwise provided pursuant to the express terms, rates and conditions of CR/C&W's agreement with its principal, if, as and when such commission (if any) is actually received from such principal. (A copy of the rates and conditions referred to above with respect to this property is available upon request.)

