

47351 MICHIGAN AVENUE  
CANTON, MICHIGAN

LAND FOR SALE  
8.67 Acres Available



**SIGNATURE  
ASSOCIATES**  
KNOW SIGNATURE | KNOW RESULTS



## PROPERTY FEATURES

- 8.67 acres available
- Prime development site on Michigan Avenue
- Zoned GI, general industrial
- Complete environmental report available
- Sale Price: \$867,000 (\$100,000/acre)



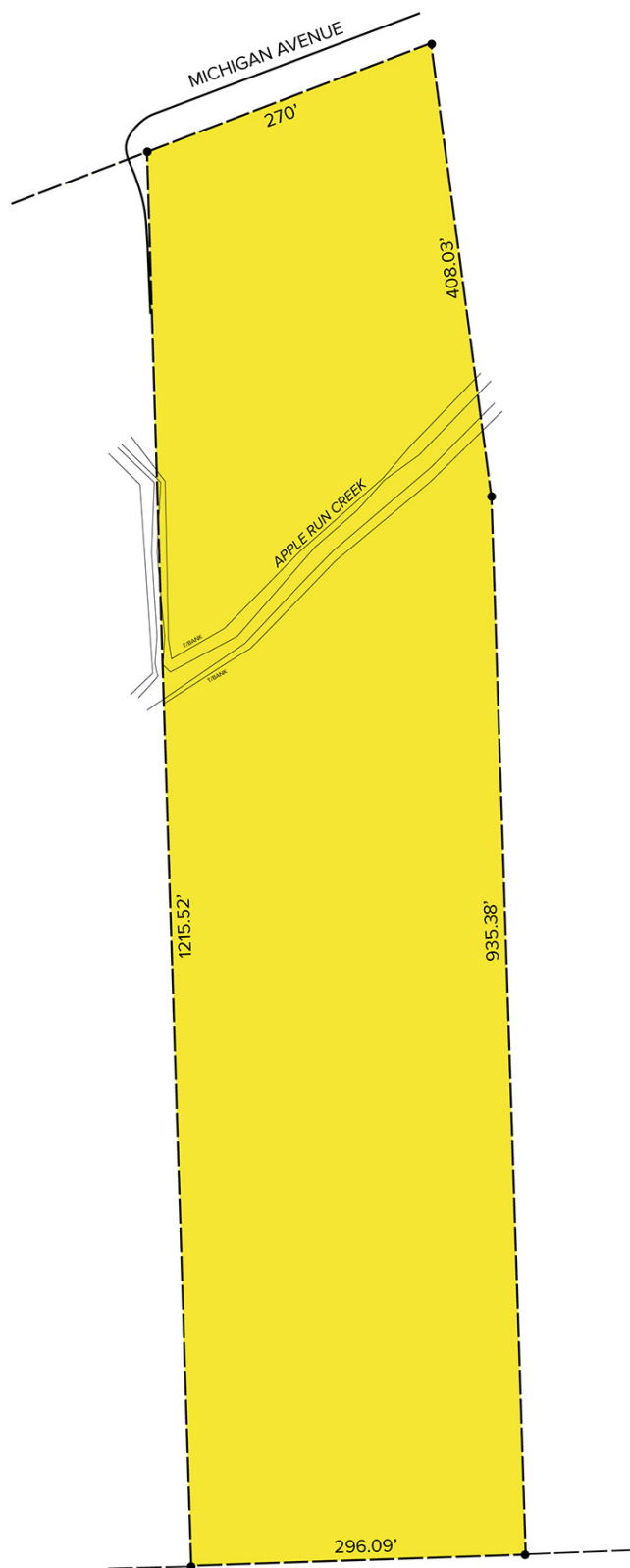
For more information, please contact:

**STEVE GORDON**  
(248) 948 0101  
sgordon@signatureassociates.com

**KEN MARCINIAK**  
(419) 249 6302  
kmarciniak@signatureassociates.com

**SIGNATURE ASSOCIATES**  
One Towne Square, Suite 1200  
Southfield, MI 48076  
www.signatureassociates.com

Site Plan



For more information, please contact:

**STEVE GORDON**  
(248) 948 0101  
sgordon@signatureassociates.com

**KEN MARCINIAK**  
(419) 249 6302  
kmarciniak@signatureassociates.com

**SIGNATURE ASSOCIATES**  
One Towne Square, Suite 1200  
Southfield, MI 48076  
www.signatureassociates.com