

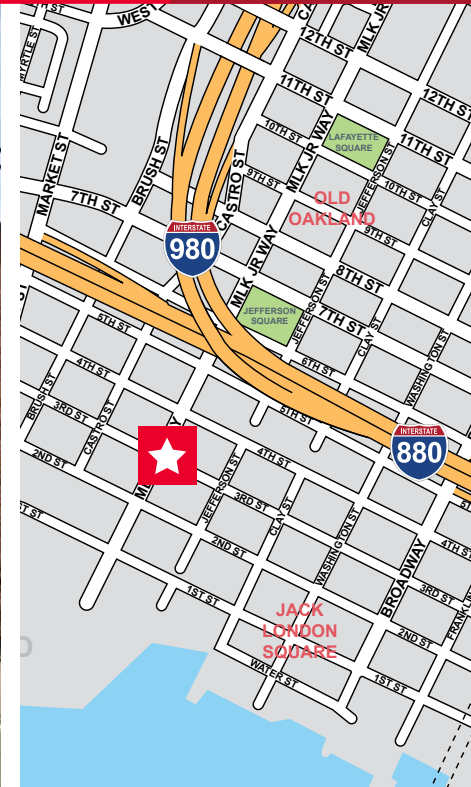


FOR LEASE

# 638 Third Street

Jack London Square | Oakland, California

## Fully Renovated Brick and Timber Office



### Property Highlights

- ±15,000 SF Space
- Brand New Turn Key Tenant Improvements
- Large Training Room
- Outdoor Space
- Parking Available
- Spectacular 18' Ceilings
- Close to Broadway B Shuttle, Freeway Access, Ferry Terminal and Amtrak Station



#### Marc Ward

Managing Director

+1 510 267 6026

marc.ward@cushwake.com

LIC #01197359

555 12th Street, Suite 1400

Oakland, CA 94607

main +1 510 465 8000

fax +1 510 465 1350

[cushmanwakefield.com](http://cushmanwakefield.com)

[Visit Site Specific COVID-19 Prevention Plan](#)

©2020 Cushman & Wakefield. All rights reserved. The information contained in this communication is strictly confidential. This information has been obtained from sources believed to be reliable but has not been verified. NO WARRANTY OR REPRESENTATION, EXPRESS OR IMPLIED, IS MADE AS TO THE CONDITION OF THE PROPERTY (OR PROPERTIES) REFERENCED HEREIN OR AS TO THE ACCURACY OR COMPLETENESS OF THE INFORMATION CONTAINED HEREIN, AND SAME IS SUBMITTED SUBJECT TO ERRORS, OMISSIONS, CHANGE OF PRICE, RENTAL OR OTHER CONDITIONS, WITHDRAWAL WITHOUT NOTICE, AND TO ANY SPECIAL LISTING CONDITIONS IMPOSED BY THE PROPERTY OWNER(S). ANY PROJECTIONS, OPINIONS OR ESTIMATES ARE SUBJECT TO UNCERTAINTY AND DO NOT SIGNIFY CURRENT OR FUTURE PROPERTY PERFORMANCE.



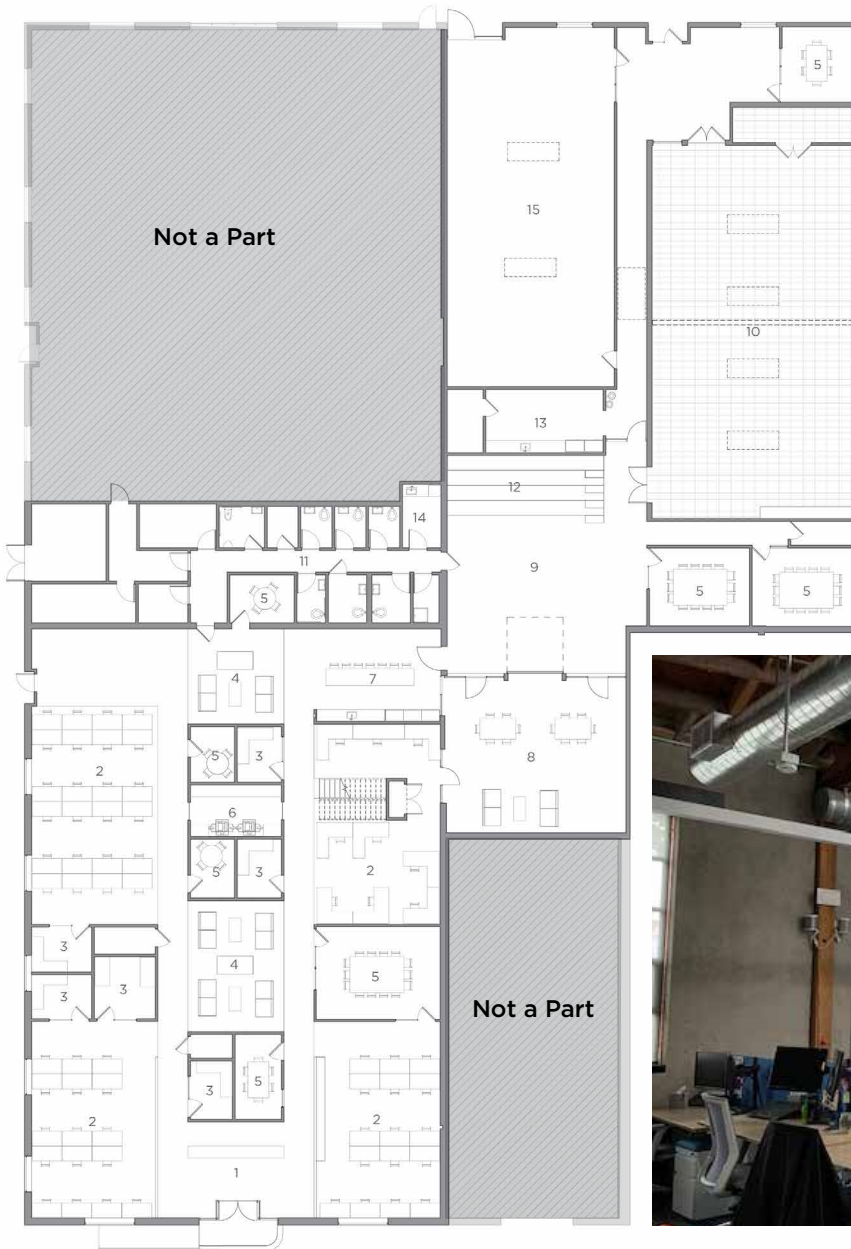


FOR LEASE

**638 Third Street**

Jack London Square | Oakland, California

**Floor Plan**



**Marc Ward**  
Managing Director  
+1 510 267 6026  
marc.ward@cushwake.com  
LIC #01197359

555 12th Street, Suite 1400  
Oakland, CA 94607  
main +1 510 465 8000  
fax +1 510 465 1350  
[cushmanwakefield.com](http://cushmanwakefield.com)

**[Visit Site Specific COVID-19 Prevention Plan](#)**

©2020 Cushman & Wakefield. All rights reserved. The information contained in this communication is strictly confidential. This information has been obtained from sources believed to be reliable but has not been verified. NO WARRANTY OR REPRESENTATION, EXPRESS OR IMPLIED, IS MADE AS TO THE CONDITION OF THE PROPERTY (OR PROPERTIES) REFERENCED HEREIN OR AS TO THE ACCURACY OR COMPLETENESS OF THE INFORMATION CONTAINED HEREIN, AND SAME IS SUBMITTED SUBJECT TO ERRORS, OMISSIONS, CHANGE OF PRICE, RENTAL OR OTHER CONDITIONS, WITHDRAWAL WITHOUT NOTICE, AND TO ANY SPECIAL LISTING CONDITIONS IMPOSED BY THE PROPERTY OWNER(S). ANY PROJECTIONS, OPINIONS OR ESTIMATES ARE SUBJECT TO UNCERTAINTY AND DO NOT SIGNIFY CURRENT OR FUTURE PROPERTY PERFORMANCE.