

FOR SALE

TRUDEAU BUILDING

Weber Avenue

Industrial Building For Sale in Sioux Falls



610 North Weber Avenue
Sioux Falls, SD 57103



size

Building: 3,696 sqft
Land: 6,160 sqft



price

\$295,000



details

- Built in 1977
- Interior Dimensions:
 - 43' wide x 82' deep
 - 18'6" sidewalls (16'6" clear)
 - 14' x 14' overhead door
 - 8' x 8' overhead door
- Walk-in doors on both front/rear of building
- Forced-air heat
- 3-phase power



layout

Wide open shop space,
1 office, 1 restroom,
1 storage closet, plus
mezzanine storage.



location

Convenient shop space
on Weber Avenue,
located in the core of
the City.

Information deemed reliable but not guaranteed.



Lake Lorraine | 2571 Westlake Drive #100
Sioux Falls, South Dakota 57106
VBCLink.com | 605.361.8211



605.376.0127
Ryan@VBCLink.com



Smithfield®

East Rice Street



East Falls Park Drive

Falls Park



North Weber Avenue



North Drive

North Phillips Avenue

North Main Avenue

North Phillips Avenue

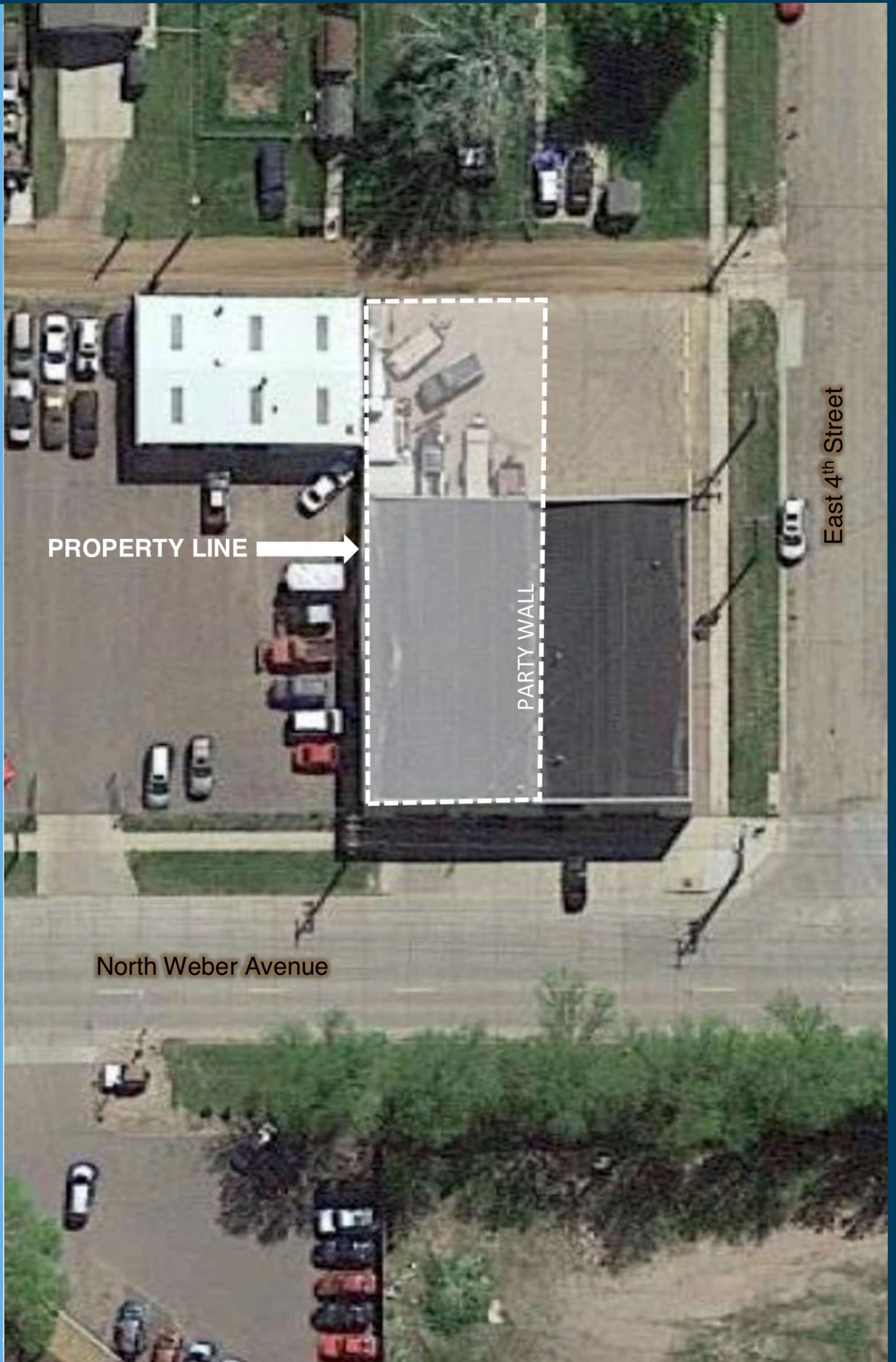
East 6th Street

East 6th Street



Whittier Middle School

AERIAL VIEW



PROPERTY LINE →

PARTY WALL

North Weber Avenue

East 4th Street

PROPERTY PHOTOS

