



RETAIL PROPERTY FOR LEASE

TANGLEWOOD CROSSING

3855 CONLON WAY, ELIZABETH CITY, NC 27909



TANGLEWOOD CROSSING

3855 CONLON WAY, ELIZABETH CITY, NC 27909

PROPERTY OVERVIEW



NEW GROCERS ALDI AND LIDL COMING SOON

OFFERING SUMMARY

Available Spaces: Anchor and Junior Anchor Spaces

Outparcel 1: 1.05 Acres

Outparcel 2: 1.05 Acres

PROPERTY OVERVIEW

Tanglewood Crossing is an exciting proposed retail development in the growing Tanglewood trade area in Elizabeth City, NC. The site is immediately adjacent to Tanglewood Pavilions shopping center development anchored by Hobby Lobby, TJ Maxx, Ross Dress for Less, and Dollar Tree, which opened in fall 2015.

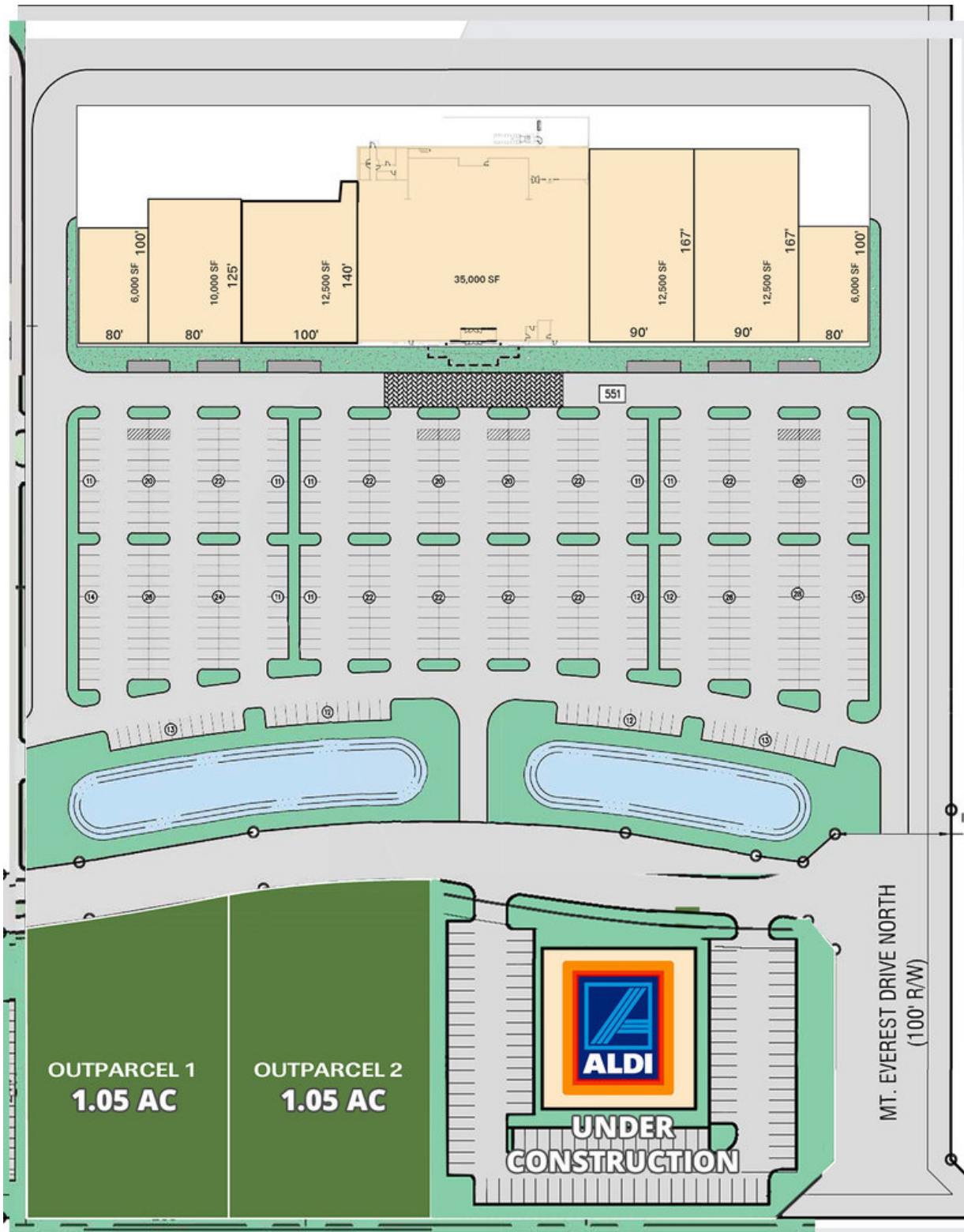
PROPERTY HIGHLIGHTS

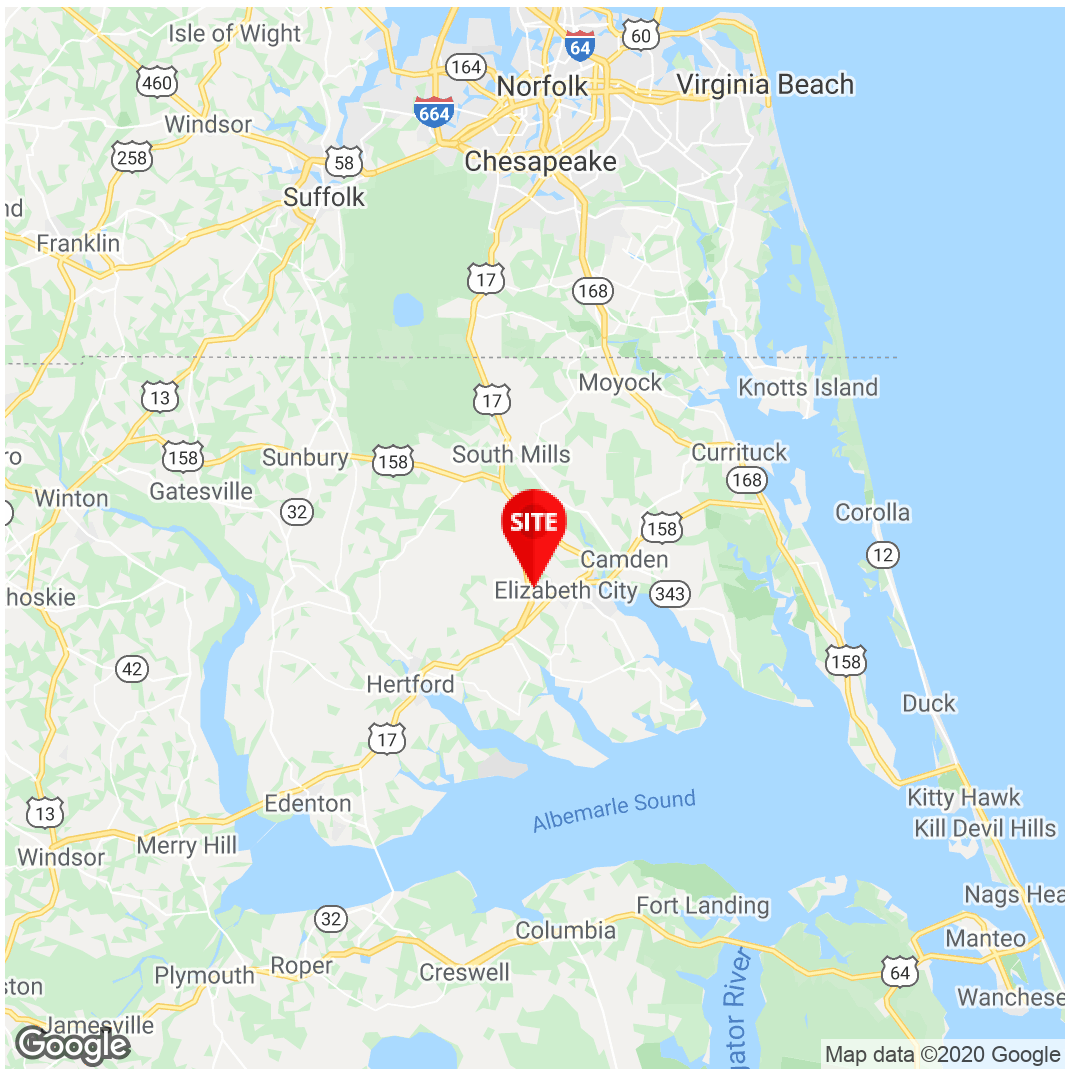
- Tanglewood Crossing is an exciting proposed retail development in the growing Tanglewood trade area in Elizabeth City, NC. The site is immediately adjacent to Tanglewood Pavilions shopping center, anchored by Hobby Lobby, TJ Maxx, Ross Dress for Less, and Dollar Tree, which opened in fall 2015.
- Outparcels continue to develop, with Aldi and Discount Tire under construction, and Lidl coming soon in the immediate vicinity.
- Elizabeth City's major employers include the US Coast Guard, which maintains a major base with more than 100 buildings on 880 acres. Elizabeth City State University supports more than 2,700 employees and has a student population of 2,340.

TANGLEWOOD CROSSING

3855 CONLON WAY, ELIZABETH CITY, NC 27909

CONCEPT PLAN



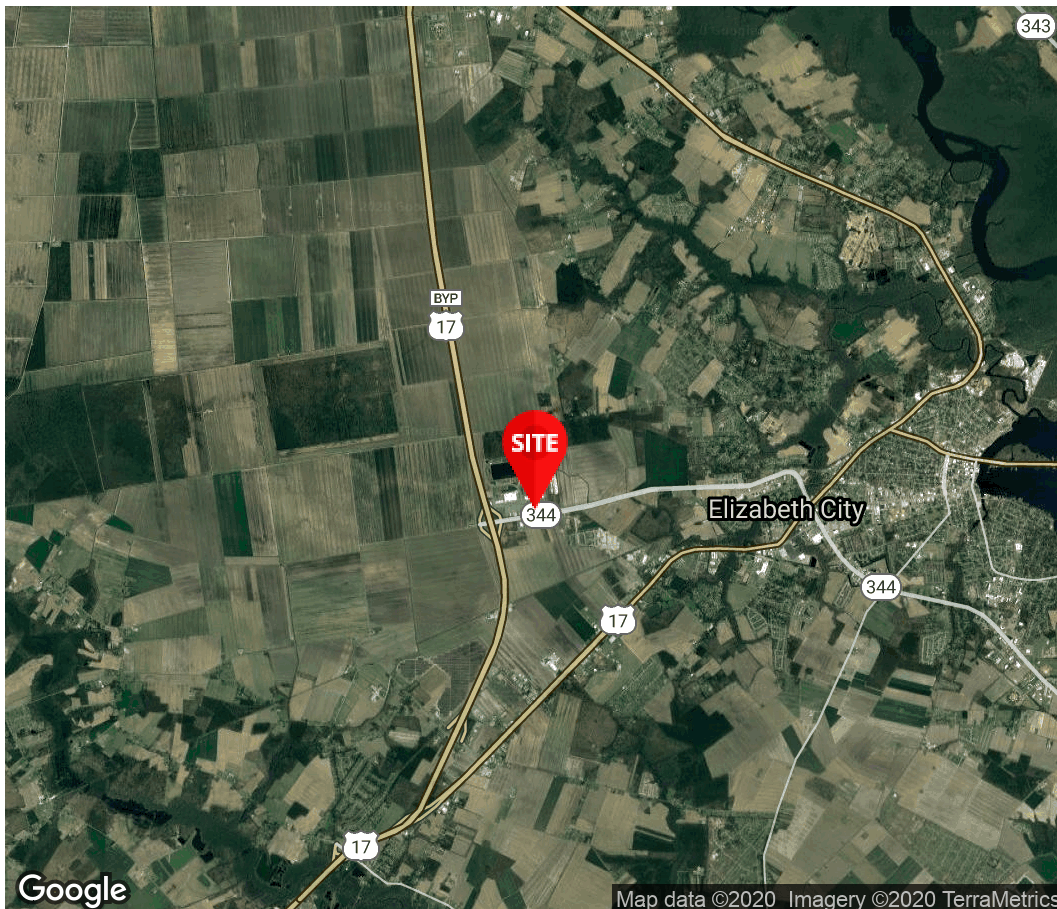


Dave Redmond

Vice President/Associate
Broker

757.333.4310

Dredmond@divaris.com



The information contained herein should be considered confidential and remains the sole property of Divaris Real Estate, Inc. at all times. Although every effort has been made to ensure accuracy, no liability will be accepted for any errors or omissions. Disclosure of any information contained herein is prohibited except with the express written permission of Divaris Real Estate, Inc.