

BOUNTIFUL GATEWAY TOWER

563 West 500 South, Bountiful, Utah 84010



FOR LEASE

\$19.50 PSF FULL SERVICE

PROPERTY FEATURES

- 1,603 – 17,801 SF Available
- Newly Installed LED Lighting Throughout Building
- Major Lobby and Common Area Renovation Recently Completed
- Tenant Improvement Monies Available
- 14 Minutes to Downtown Salt Lake
- 13 Minutes to Salt Lake City International Airport
- Immediate Access to I-15
- Close Proximity to Woods Cross Front Runner Station
- Walking Distance to Amenities
- Superior South Davis Location
- Unbeatable Freeway Visibility

FOR MORE
INFORMATION
CONTACT

CHRIS FALK, CCIM, SIOR
801.416.1024
chris.falk@ngkf.com

BRAXTON WILLIE, CCIM
801.416.1050
braxton.willie@ngkf.com



1755 East 1450 South, Suite 100 | Clearfield, Utah 84015 | 801.927.2000 | www.ngacres.com

This document has been prepared by Newmark Knight Frank for advertising and general information purposes only. While the information contained herein has been obtained from what are believed to be reliable sources, the same has not been verified for accuracy or completeness. Newmark Knight Frank accepts no responsibility or liability for the information contained in this document. Any interested party should conduct an independent investigation to verify the information contained herein.

BOUNTIFUL GATEWAY TOWER

563 West 500 South, Bountiful, Utah 84010



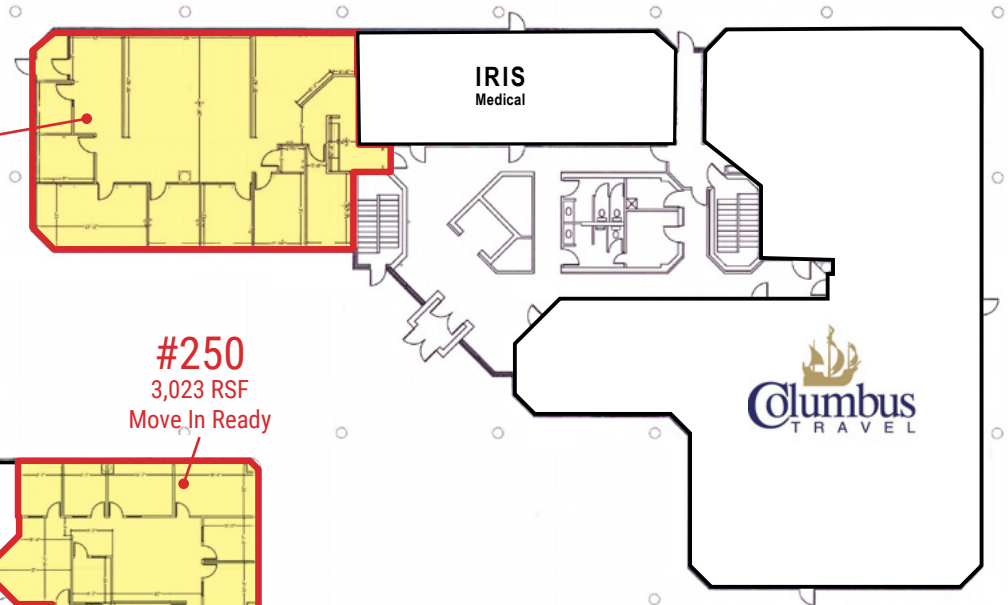
BOUNTIFUL GATEWAY TOWER

563 West 500 South, Bountiful, Utah 84010

FLOOR PLANS

FIRST FLOOR

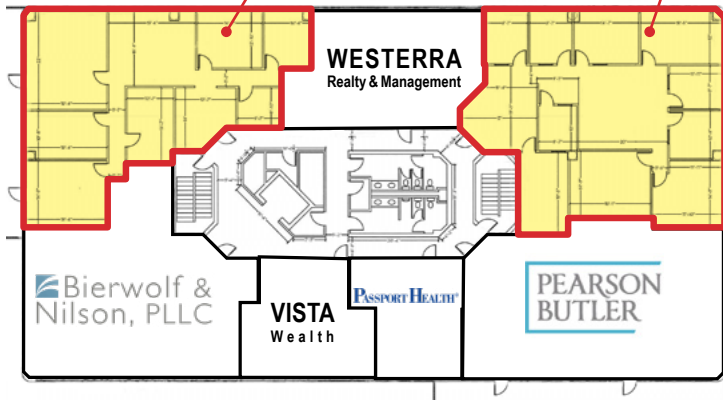
#100
3,254 SF



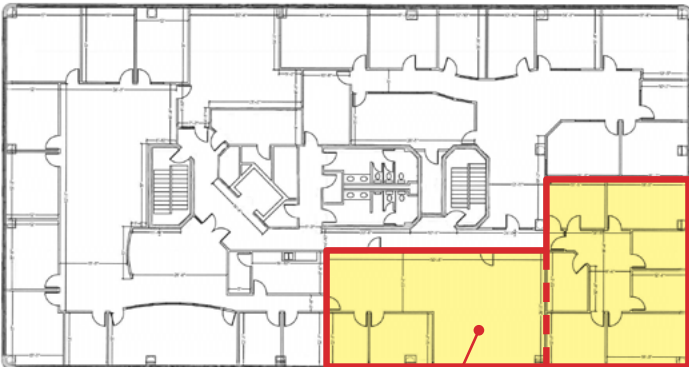
SECOND FLOOR

#245
2,767 SF

#250
3,023 RSF
Move In Ready



THIRD FLOOR MOVE IN READY SUITES AVAILABLE

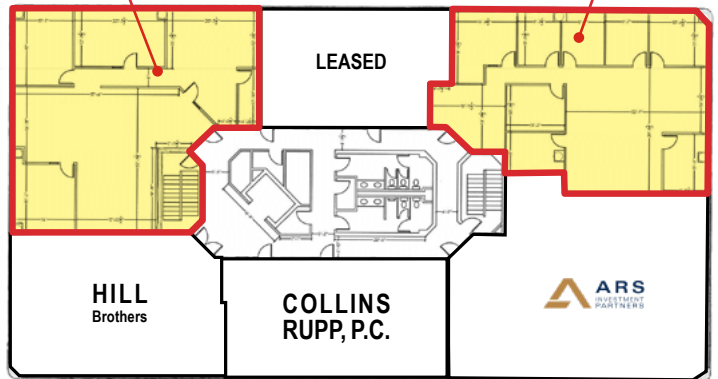


AVAILABLE
1,603 - 3,268 SF

FOURTH FLOOR

AVAILABLE
2,775 SF

#400
2,714 SF



BOUNTIFUL GATEWAY TOWER

563 West 500 South, Bountiful, Utah 84010

DEVELOPMENT PARKING



BOUNTIFUL GATEWAY TOWER

563 West 500 South, Bountiful, Utah 84010

