



# 597

FIFTH AVENUE

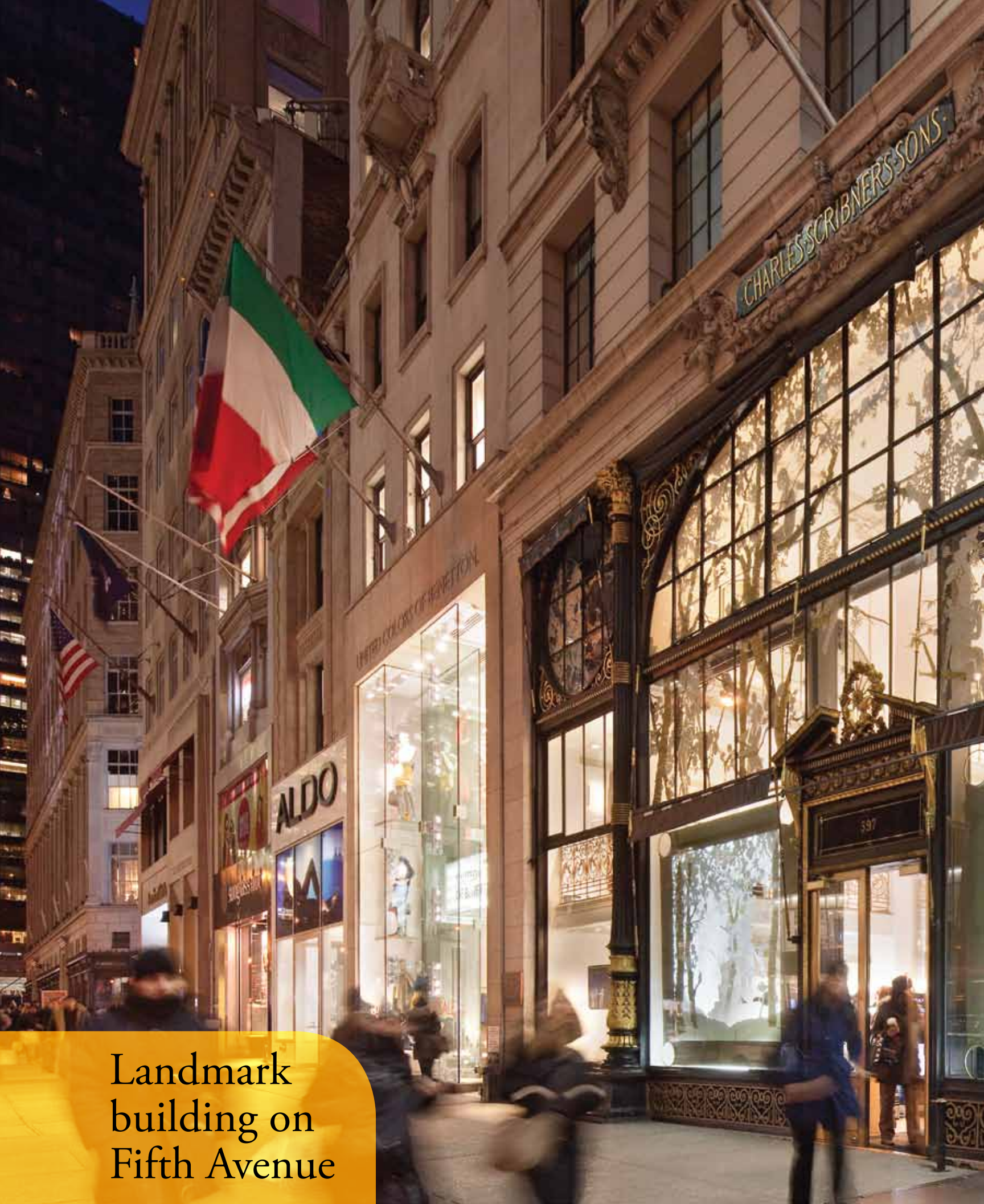
THE SCRIBNER BUILDING

UNITED COLORS OF BENETTON



CHARLES SCRIBNER'S





Landmark  
building on  
Fifth Avenue

Also known as The Scribner Building, 597 Fifth Avenue is a stunning and historic landmark building.



**597 Fifth Avenue** lies on an ultra chic international shopping avenue amongst exquisite high performance retail stores such as Henri Bendel and Bergdorf Goodman. Just steps away from the iconic Rockefeller Center, hundreds of thousands of people are sure to be exposed to your brand daily. With one of the city's most notable storefronts and nearly 11,000 people passing by each hour, this elegant building offers the opportunity of a lifetime.

**597**  
FIFTH AVENUE  
THE SCRIBNER BUILDING



# 5M

## **BRYANT PARK**

5 million annual visitors  
20,000 – 30,000 per week day  
250,000 passersby

# 300K

## **ROCKEFELLER CENTER**

The number of people  
from New York and around  
the world who visit the  
Rockefeller Center every day

# 750K

## **GRAND CENTRAL**

750K people pass through the  
terminal each day, 1,000,000 +  
during the holiday season and  
21.6 million tourists pass  
through each year.



48th Street Entrance



## THE PROPERTY

- The Scribner Building
- Approximately 18,150sf of retail space
- 12-story Class A Boutique office building
- 53,334 sf of office space
- Approximately 54 ft of frontage on Fifth Avenue
- Approximately 26ft of frontage on 48th Street
- 32 ft ceiling heights
- Designated NYC landmark in 1982
- One of the city's most notable storefronts
- Fifth Avenue is the most sought after retail destination

## LOCATION

- Fifth Avenue between 48th and 49th Streets
- 11,000 people per hour will walk by this landmark
- Up to 200,000 people may be exposed to your brand daily

## SIGHTS/ATTRACTIONS

- Last year 48 million people visited NYC
- Approximately 300,000 people visit Rockefeller Center daily
- St. Patrick's Cathedral
- New York Public Library
- Bryant Park

## TRANSPORTATION

- All of Manhattan's major subway lines land within footsteps of the Property including 1, N, Q, R, B, D, F, M

# 597

FIFTH AVENUE

THE SCRIBNER BUILDING

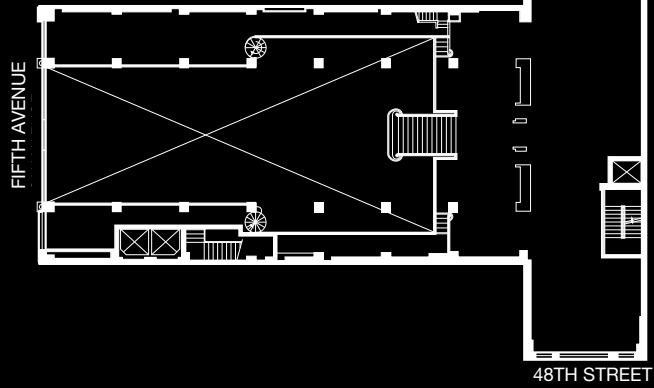
# 597

FIFTH AVENUE

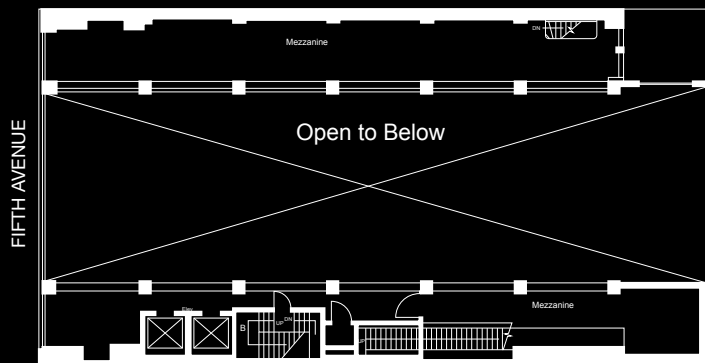
THE SCRIBNER BUILDING

# 18,150 SF

## BALCONY 4,600 SF



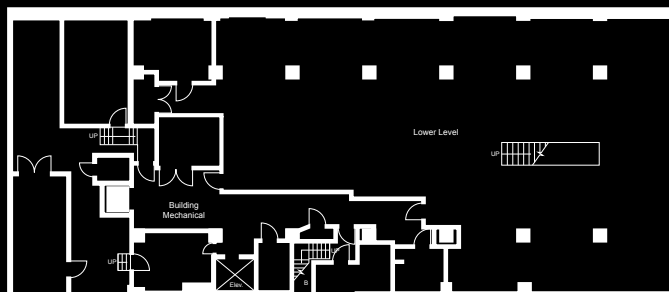
## MEZZANINE 2,000 SF

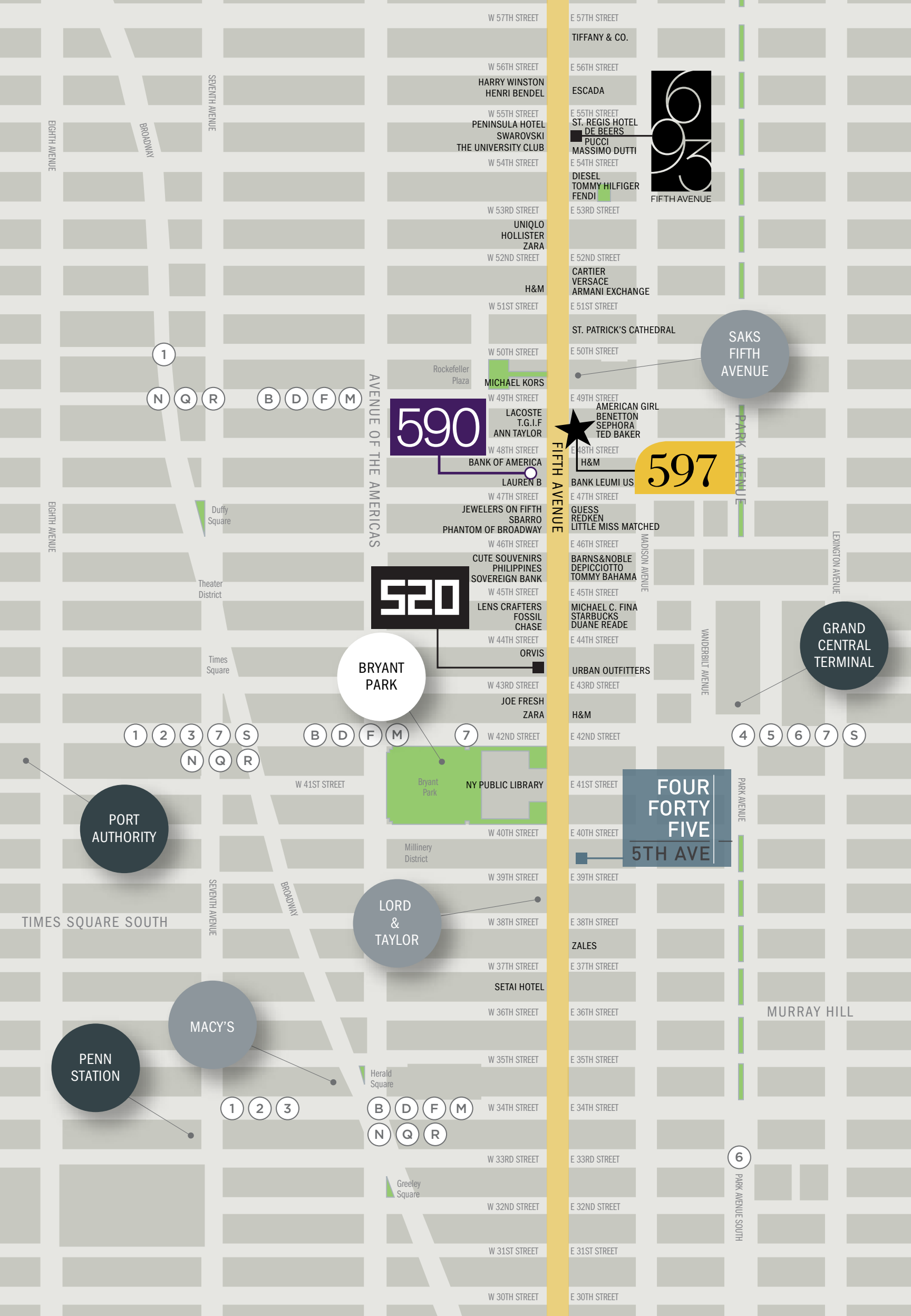


## GROUND 7,500 SF



## LOWER LEVEL 4,050 SF





EIGHTH AVENUE  
BROADWAY

SEVENTH AVENUE

AVENUE OF THE AMERICAS

FIFTH AVENUE

FIFTH AVENUE

PARK AVENUE

LENINGTON AVENUE

VANDERBILT AVENUE

PARK AVENUE

PARK AVENUE SOUTH

W 57TH STREET

E 57TH STREET

W 56TH STREET

E 56TH STREET

HARRY WINSTON  
HENRI BENDEL

TIFFANY & CO.

ESCADA

W 55TH STREET  
PENINSULA HOTEL  
SWAROVSKI  
THE UNIVERSITY CLUB

E 55TH STREET  
ST. REGIS HOTEL  
DE BEERS  
PUCCI

MASSIMO DUTTI

E 54TH STREET

DIESEL  
TOMMY HILFIGER

FENDI

W 53RD STREET

E 53RD STREET

UNIQLO  
HOLLISTER  
ZARA

W 52ND STREET

E 52ND STREET

H&M

CARTIER

VERSACE

ARMANI EXCHANGE

W 51ST STREET

E 51ST STREET

ST. PATRICK'S CATHEDRAL

SAKS  
FIFTH  
AVENUE

W 50TH STREET

E 50TH STREET

Rockefeller  
Plaza

MICHAEL KORS

W 49TH STREET

E 49TH STREET

LACOSTE

T.G.I.F.

ANN TAYLOR

AMERICAN GIRL

BENETTON

SEPHORA

TED BAKER

590

W 48TH STREET

E 48TH STREET

BANK OF AMERICA

LAUREN B

BANK LEUMI US

597

W 47TH STREET

E 47TH STREET

JEWELERS ON FIFTH  
SBARRO  
PHANTOM OF BROADWAY

GUESS

REDKEN

LITTLE MISS MATCHED

W 46TH STREET

E 46TH STREET

CUTE SOUVENIRS  
PHILIPPINES  
SOVEREIGN BANK

BARN&NOBLE

DEPICCIOTTO

TOMMY BAHAMA

520

W 45TH STREET

E 45TH STREET

LENS CRAFTERS  
FOSSIL  
CHASE

MICHAEL C. FINA

STARBUCKS

DUANE READE

W 44TH STREET

E 44TH STREET

ORVIS

BRYANT  
PARK

GRAND  
CENTRAL  
TERMINAL

W 43RD STREET

E 43RD STREET

JOE FRESH

ZARA

H&M

W 42ND STREET

E 42ND STREET

7

Bryant Park  
NY PUBLIC LIBRARY

FOUR  
FORTY  
FIVE  
5TH AVE

W 41ST STREET

E 41ST STREET

Millinery  
District

W 40TH STREET

E 40TH STREET

W 39TH STREET

E 39TH STREET

W 38TH STREET

E 38TH STREET

ZALES

W 37TH STREET

E 37TH STREET

W 36TH STREET

E 36TH STREET

W 35TH STREET

E 35TH STREET

MURRAY HILL

W 34TH STREET

E 34TH STREET

B D F M  
N Q R

W 33RD STREET

E 33RD STREET

Greeley  
Square

W 32ND STREET

E 32ND STREET

W 31ST STREET

E 31ST STREET

W 30TH STREET

E 30TH STREET

EIGHTH AVENUE

1

N Q R

B D F M

EIGHTH AVENUE

Duffy  
Square

Theater  
District

Times  
Square

1 2 3 7 S  
N Q R

B D F M

4 5 6 7 S

PORT  
AUTHORITY

TIMES SQUARE SOUTH

SEVENTH AVENUE

BROADWAY

LORD  
&  
TAYLOR

PENN  
STATION

MACY'S

1 2 3

B D F M  
N Q R

Herald  
Square

Greeley  
Square

# 597

FIFTH AVENUE

THE SCRIBNER BUILDING

[www.597FifthAvenue.com](http://www.597FifthAvenue.com)



**Michael Worthman**  
(212)529-7417  
[mworthman@thorequities.com](mailto:mworthman@thorequities.com)  
[www.thorequities.com](http://www.thorequities.com)

**Thor Equities** is a leader in urban real estate development, leasing and management, pursuing premier retail and mixed-use assets in high-density areas. Thor Equities provides the best possible "High Street" retail and mixed-use building environments within the urban landscape across the United States, Latin America and Europe – all while delivering attractive, risk-adjusted returns to investors.