

HEATHER RIDGE

2345-2399 ARIEL STREET N | MAPLEWOOD, MN



FOR LEASE



SPACE AVAILABLE:

1,388 SF - Office
Building 4 - 2375 Ariel Street N

ASKING RATE:

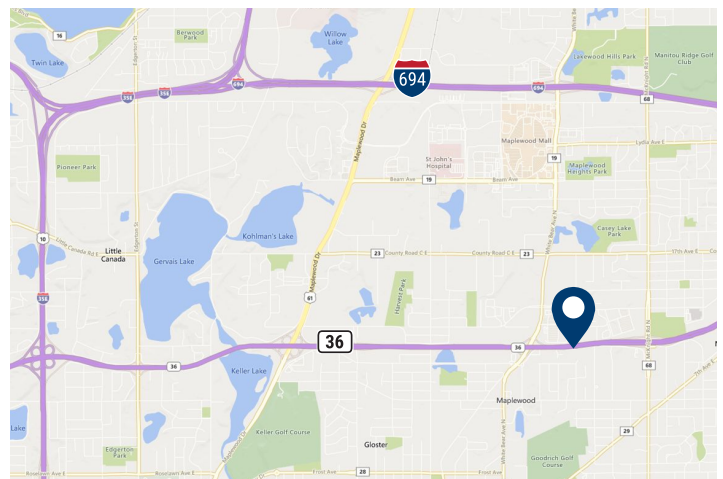
\$11.00/SF Net

EST. 2020 TAX & CAM:

\$4.97/SF - Tax
\$3.37/SF - CAM
\$8.34/SF - Total

PROPERTY HIGHLIGHTS

- 1,388 square feet available in Maplewood Office Park
- Close proximity to retail shops and restaurants
- Ample parking
- Easy access to Highway 36 via White Bear Avenue
- Professional image exterior
- Monument signage



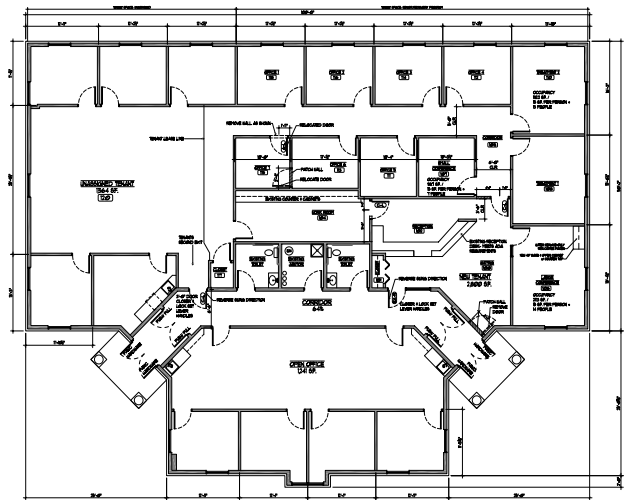
HEATHER RIDGE

2345-2399 ARIEL STREET N | MAPLEWOOD, MN



Building	Address	Available SF
1	2345 Ariel Street N	-
2	2355 Ariel Street N	-
3	2365 Ariel Street N	-
4	2375 Ariel Street N	1,388 SF
5	2385 Ariel Street N	-
6	2395 Ariel Street N	-
7	2399 Ariel Street N	-

FLOOR PLAN - BUILDING 4



JAY CHMIELESKI
 Managing Director
 D +1 612 430 9982
 M +1 612 275 3772
 jay.chmielecki@ngkf.com

CALLIE RONKOWSKI
 Associate
 D +1 612 430 9975
 M +1 701 740 1017
 callie.ronkowski@ngkf.com

www.ngkf.com

The information contained herein has been obtained from sources deemed reliable but has not been verified and no guarantee, warranty or representation, either express or implied, is made with respect to such information. Terms of sale or lease and availability are subject to change or withdrawal without notice.

