

Executive Suites FOR LEASE

Sagebrush Office Park Flower Mound, TX



LOCATION: 2605 & 2609 Sagebrush Drive, Flower Mound, TX; located on SEQ of Long Prairie Rd. (FM 2499) and Sagebrush Dr. (Lighted Intersection).

EXPENSES: **Utilities, taxes and maintenance paid by Landlord!!** Tenant only pays for telephone and Internet (plus janitorial for their Suite).

2605

Suite 103 -	691 SF	\$1,382.00/month	- 2 offices
Suite 104 -	480 SF	\$1,000.00/month	- 2 offices
Suite 107 -	659 SF	\$1,250.00/month	- 2 offices
Suite 109 -	309 SF	\$ 655.00/month	- 1 office
Suite 201 -	826 SF	\$1,700.00/month	- 3 offices
Suite 202 -	541 SF	\$1,100.00/month	- 3 offices
Suite 206 -	362 SF	\$ 760.00/month	- 2 offices

2609

Suite 201 -	269 SF	\$ 605.00/month	- 1 office
Suite 202 -	505 SF	\$1,050.00/month	- 2 offices
Suite 204 -	550 SF	\$1,135.00/month	- 2 offices

For further information contact: Rich Muller



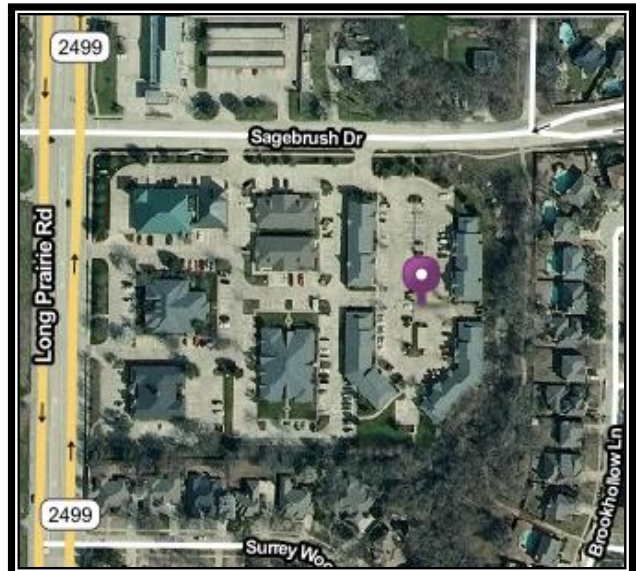
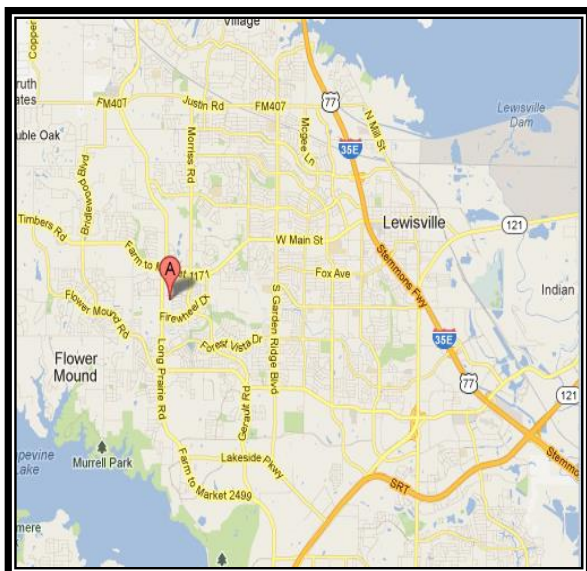
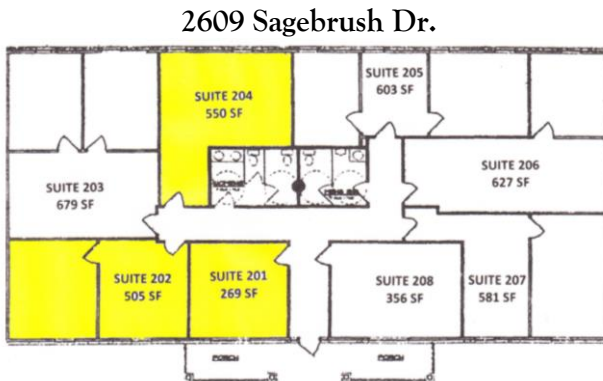
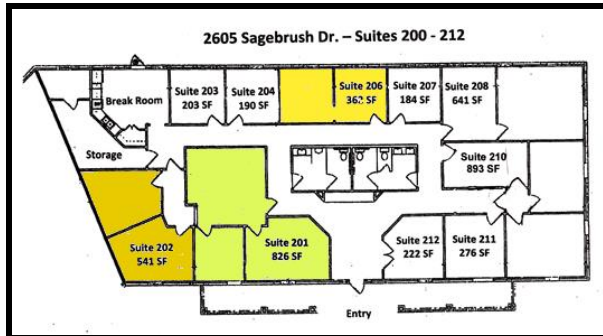
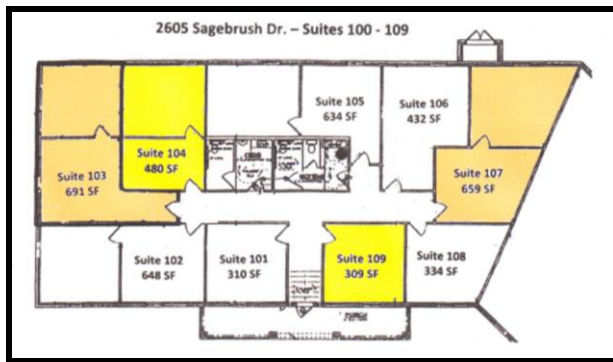
Vintage Realty

2980 Long Prairie Rd., Suite D

Flower Mound, TX 75022

972/355-0669 or Fax 972/355-5477

Email: Rich@VintageRealty.net Web Site: www.VintageRealty.net



This information is believed to be accurate, but no representation or warranty, express or implied, as to its accuracy or completeness is made by any party. The presentation of this property is submitted subject to errors, omissions, change of price or prior sale or lease, or withdrawal without notice.