

HIGLEY PARK COMMONS

1459 S Higley Rd, Bldg 11 | Gilbert, AZ 85296

Rare Office Opportunity Located Off Higley Rd & Loop 202



Matt Zaccardi
D: 480.966.7625
M: 602.561.1339
mzaccardi@cpiaz.com



COMMERCIAL PROPERTIES INC.

Locally Owned. Globally Connected. CORFAC International

TEMPE: 2323 W. University Drive, Tempe, AZ 85281 | 480.966.2301
SCOTTSDALE: 8777 N. Gainey Center Dr., Suite 245, Scottsdale, AZ 85258 | www.cpiaz.com



AVAILABLE FOR LEASE

SUITE 100 ±2,997 SF | \$23.00 NNN

- Open Reception Area
- Executive Sized Office
- Small Office
- 2 Restrooms
- Open Bull Pen Area

Rare Office Opportunity Located Off Higley Rd & Loop 202 San Tan Freeway

PROPERTY OVERVIEW



ADDRESS

1459 S Higley Rd
Building 11
Gilbert, AZ 85296



PARKING

6/1,000 SF



TENANCY

Multi-Tenant



YEAR BUILT

2008



OFFICE USE

Office or Medical



FRONTAGE

Higley Rd



The information contained herein has been obtained from various sources. We have no reason to doubt its accuracy; however, J & J Commercial Properties, Inc. has not verified such information and makes no guarantee, warranty or representation about such information. The prospective buyer or lessee should independently verify all dimensions, specifications, floor plans, and all information prior to the lease or purchase of the property. All offerings are subject to prior sale, lease, or withdrawal from the market without prior notice. Effective 03 09 22



COMMERCIAL PROPERTIES INC.

Locally Owned. Globally Connected. CARFAC International

TEMPE: 2323 W. University Drive, Tempe, AZ 85281 | 480.966.2301
SCOTTSDALE: 8777 N. Gainey Center Dr., Suite 245, Scottsdale, AZ 85258 | www.cpi.az.com

Matt Zaccardi

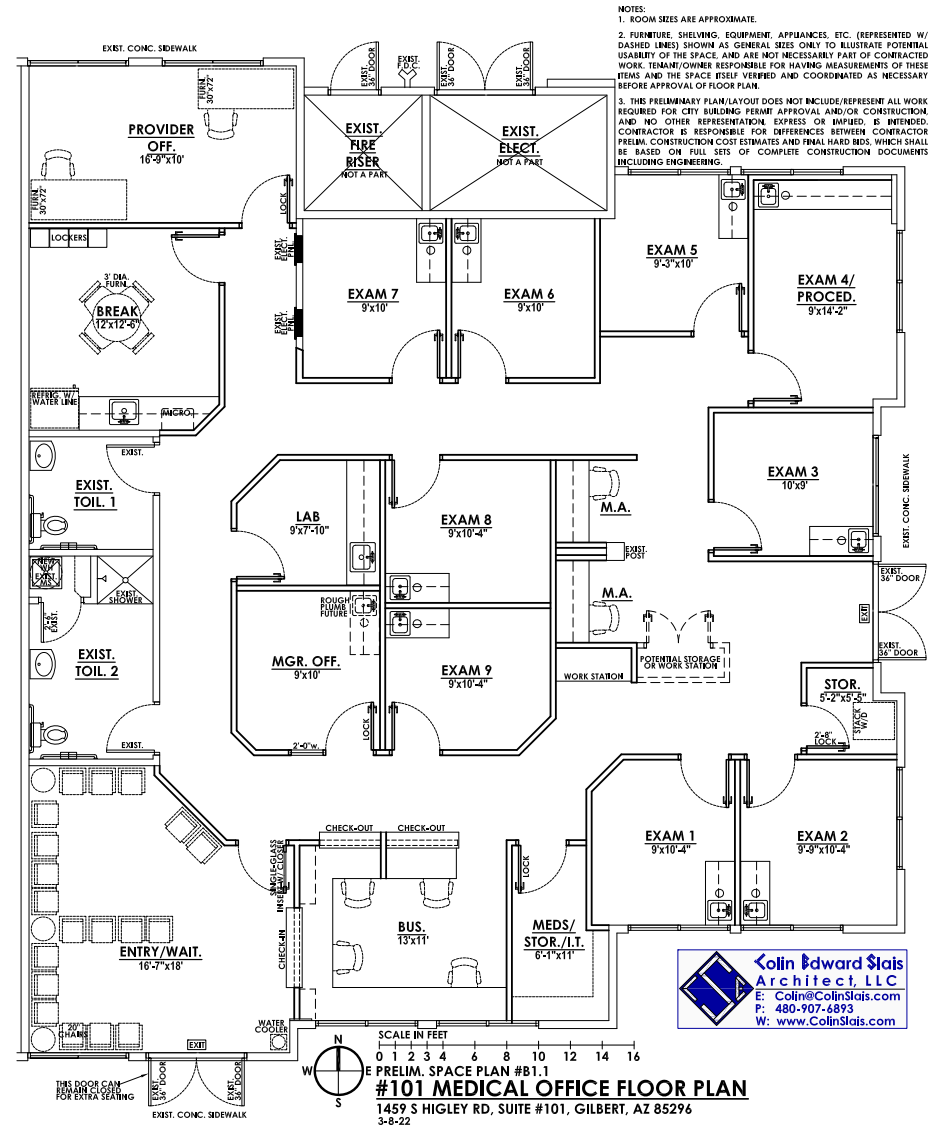
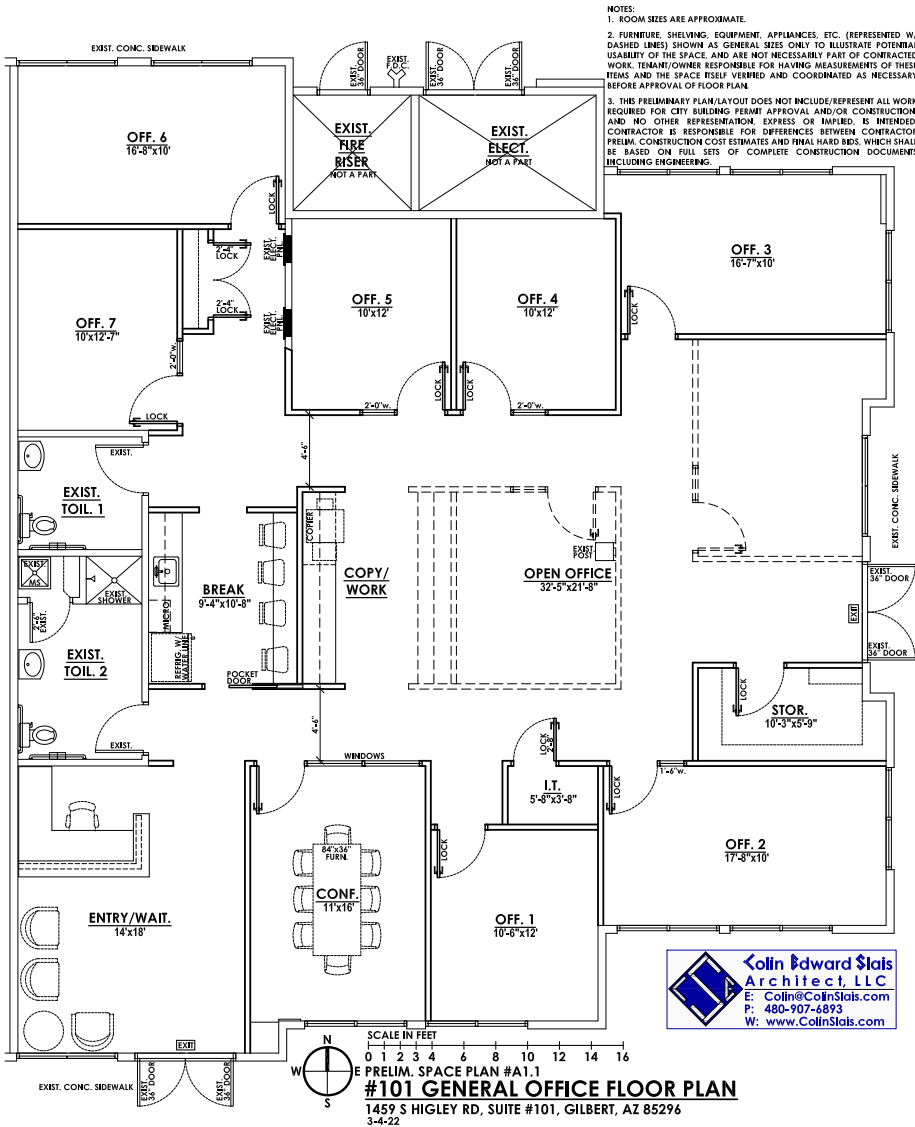
D: 480.966.7625

M: 602.561.1339

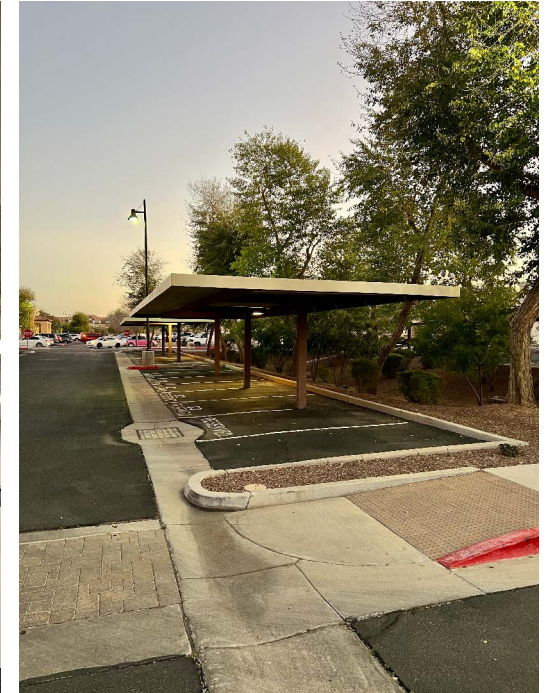
mzaccardi@cpi.az.com

Conceptual General Office

Conceptual Medical Office



HIGLEY PARK COMMONS



HIGLEY PARK COMMONS

