

Brookfield Properties



Woodland Business Park

3601 Woodpark Blvd, Charlotte, NC 28206

Located off North Graham St., 3601 Woodpark Boulevard is along the North I-77 corridor, and ±1 mile from the I-85/I-77 interchange.

TOTAL BUILDING: 65,850 SF

AVAILABLE: 19,296 SF

OFFICE AREA: 1,530 SF (brand new office construction)

CONSTRUCTION: Brick-on-brick

PARKING: Fully-fenced parking/truck court with fenced trailer parking

CLEAR HEIGHT: 20'

FIRE SPRINKLER: "Ordinary Hazard" wet sprinkler system

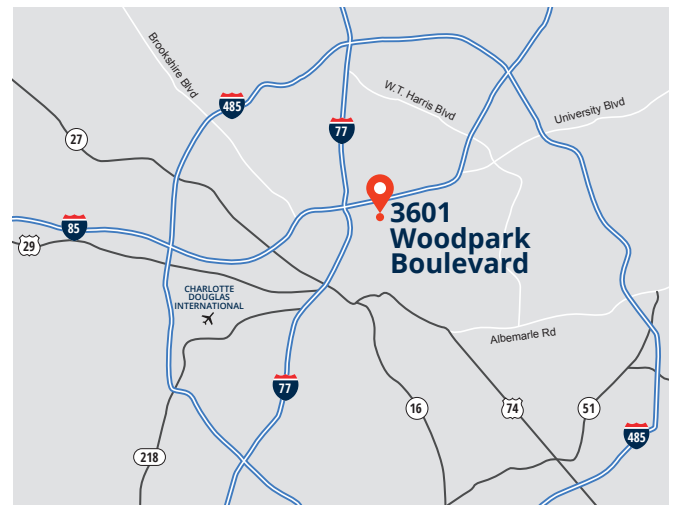
LOADING: 4 DH (all with pit levelers)

COLUMN SPACING: 37' x 40'

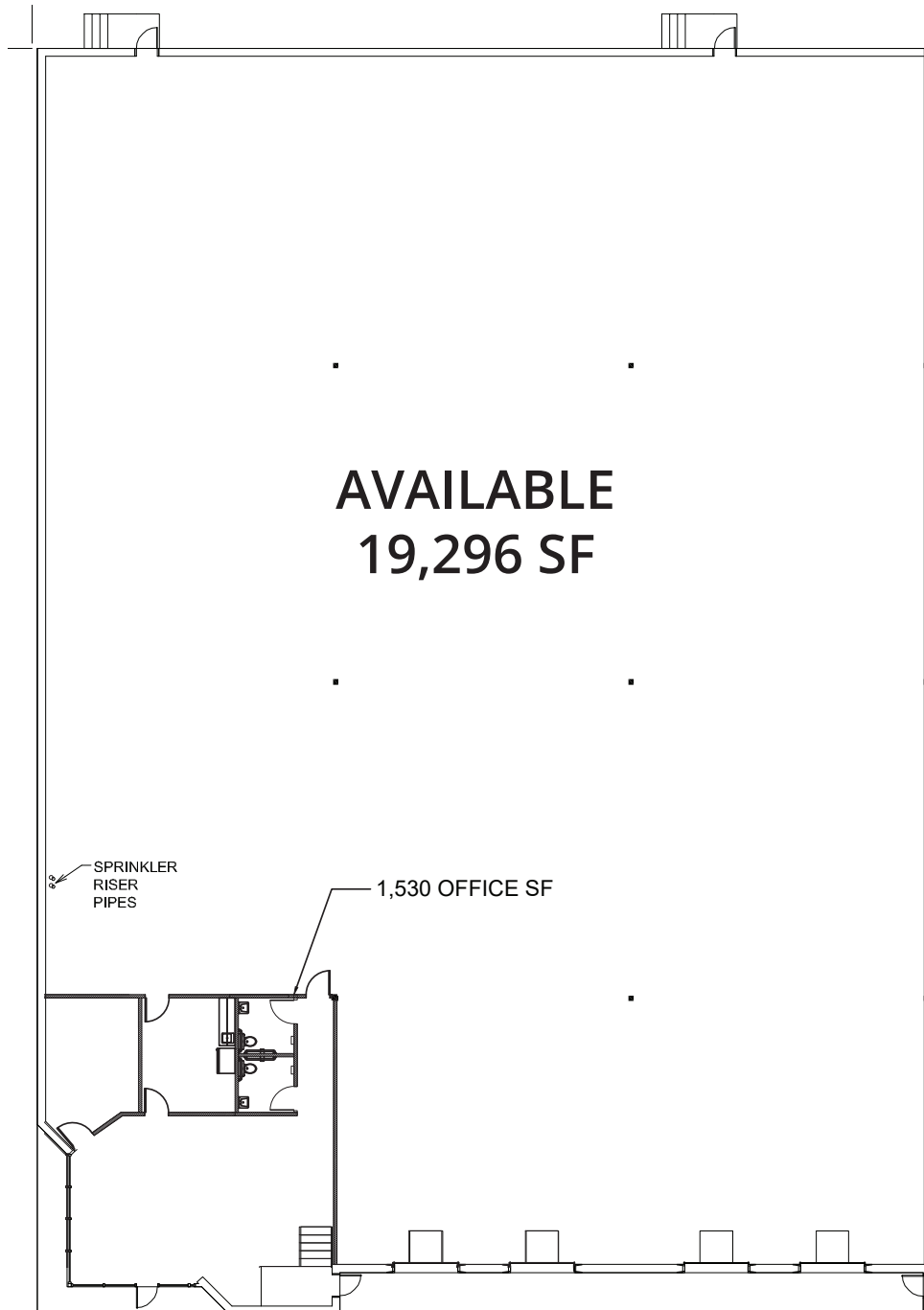
ZONING: I-2

LIGHTING: T-5 lighting with motion sensors

Location



- Close proximity to Interstates 85 and 77
- North I-77 corridor
- ± 5 miles to Charlotte CBD



For more information, or to set up a tour, please contact:



Drew Coholan
D 704.804.5842
drew.coholan@jll.com

Brad Cherry, CCIM, SIOR
D 704.927.3013
brad.cherry@jll.com

Hassan Mahmood
D 404.941.8475
hassan.mahmood@brookfieldproperties.com