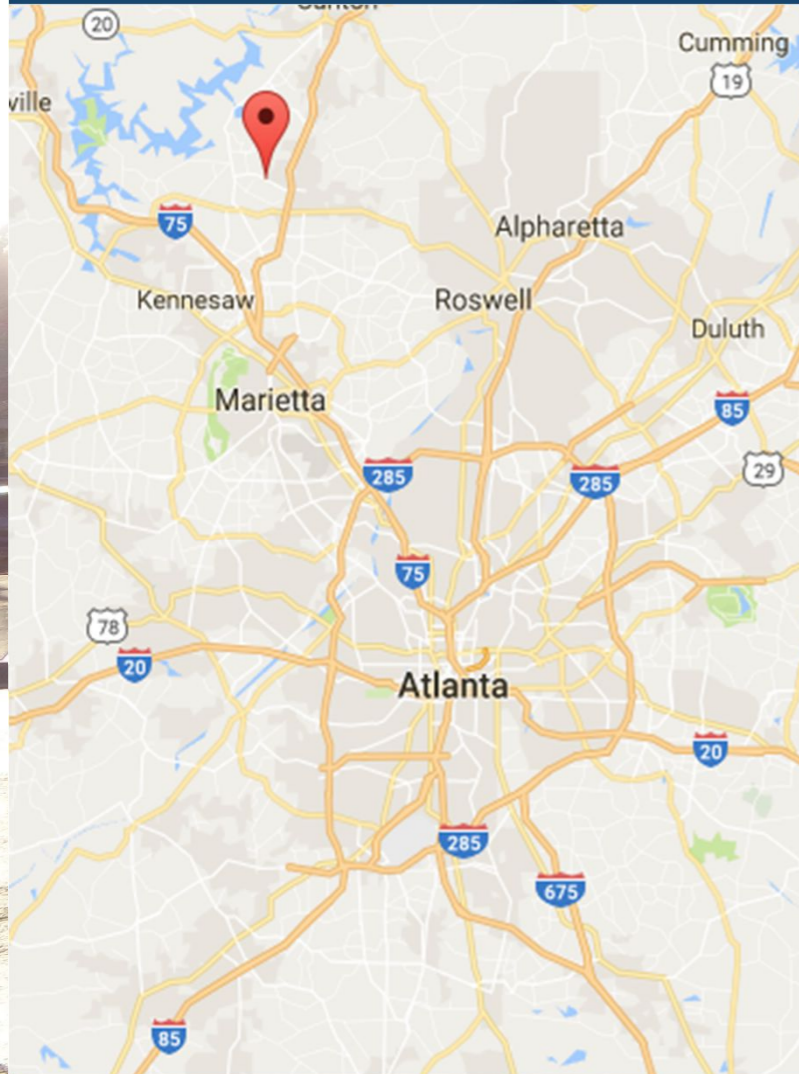


Towne Lake Promenade

2035/2045 Towne Lake Pkwy
Woodstock, Georgia 30189



Leasing Contacts

Marrissa Chanin: (678) 501-5341

Jon Flaig: (678) 501-5342

Email: info@riverwoodproperties.com

Towne Lake Promenade is located in the center of Towne Lake, an affluent residential community of Woodstock. Towne Lake Promenade, consisting of approximately 13,650 square feet of retail and restaurant space, offers excellent visibility and access to Parkside Lane, Eagle Drive, and Towne Lake Parkway.

Intersection: Towne Lake Pkwy & Eagle Dr

Daily Traffic Counts: 39,917 cars per day

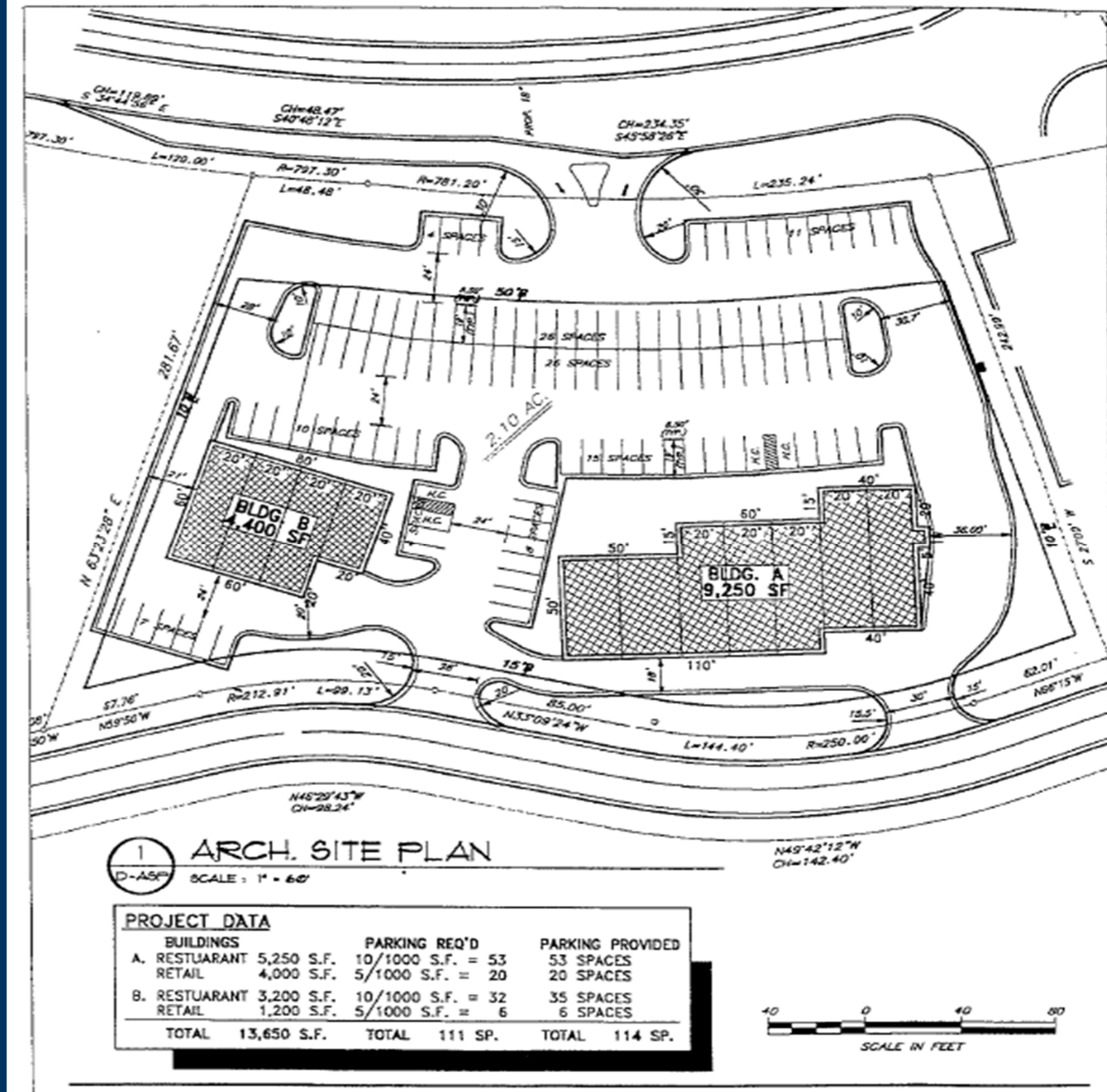
Site Access: The property has one curb cut on Towne Lake Parkway and two curb cuts onto Parkside Lane. Parkside Lane allows for immediate access to traffic lights just north and south of the property.

Towne Lake Promenade

2035-100	Starbucks	1,450
2035-110	Smallcakes	1,400
2035-130	Towne Lake Dental	2,600
2035-140	Papa John's	1,300
2035-160	Izumi	2,500
2045-100	Smoothie King	800
2045-110	Retail Space Available	1,200
2045-120	Perfect Nails & Spa	1,200
2045-130	Fashion Care Cleaners	1,200

GLA: 13,650 SF

Availability: 1,200 SF



TOWNE LAKE PROMENADE

Site Plan

AREA DEMOGRAPHICS



2016
Population

1 MILE	9,601
3 MILE	63,124
5 MILE	153,202



Estimated Population
Growth

1 MILE	10.51%
3 MILE	10.13%
5 MILE	9.32%



Household 2016

1 MILE	3,330
3 MILE	22,253
5 MILE	54,980



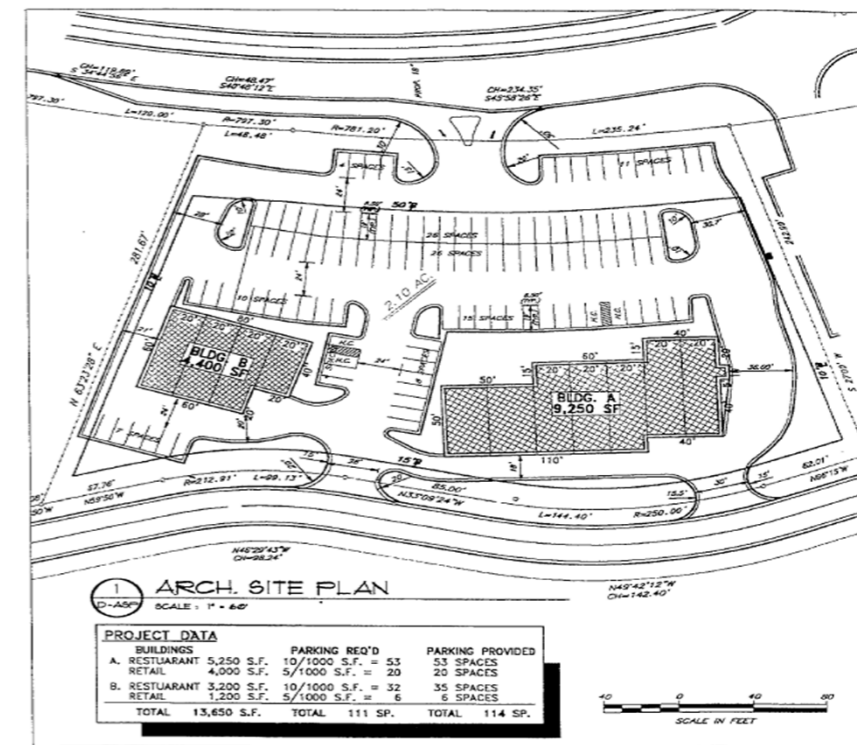
Household
Income

1 MILE	\$86,878
3 MILE	\$73,864
5 MILE	\$75,230



TOWNE LAKE PROMENADE

Trade Area Overview



TOWNE LAKE PROMENADE

Property Photos and Site Plan