

 **TRANSWESTERN**<sup>®</sup>

EXTRAORDINARY

**40**  
YEARS



**MEDICAL OFFICE SPACE FOR LEASE**

**1435 HIGHWAY 6**

SUGAR LAND, TEXAS 77478

**CONTACT**  
**ASHLEY CASSEL | SVP**  
713.490.3785

[ashley.cassel@transwestern.com](mailto:ashley.cassel@transwestern.com)

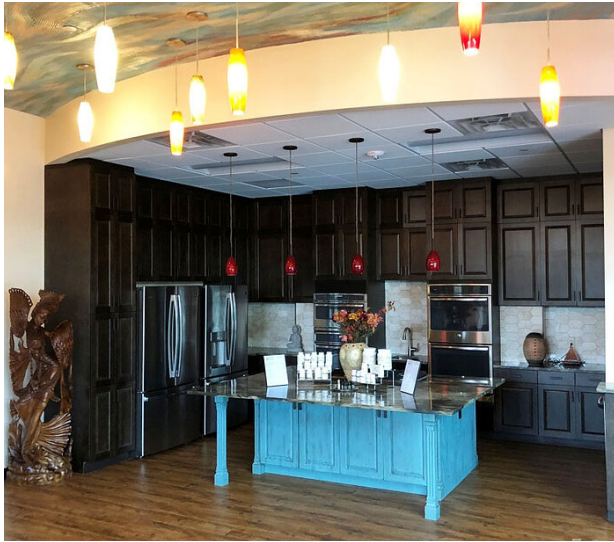
MEDICAL OFFICE SPACE FOR LEASE

# 1435 HIGHWAY 6

SUGAR LAND, TEXAS 77478

 **TRANSWESTERN**<sup>®</sup>

1900 West Loop South  
Suite 1300  
Houston, Texas 77027



## AVAILABILITIES

- Second Floor Shell Space | 2,624 SF
- Call for Rates

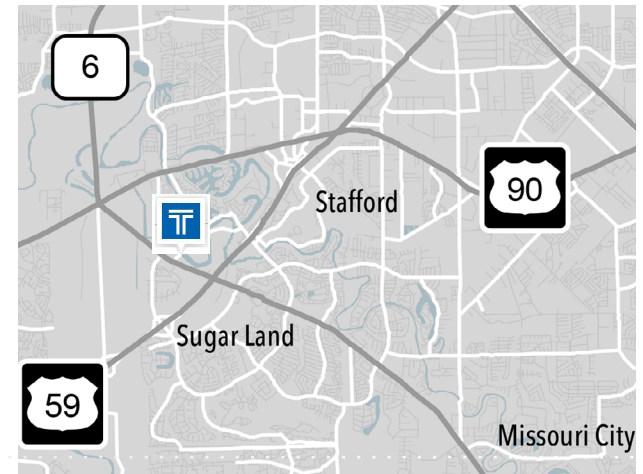
## BUILDING SPECS

- New-Construction: 2-Story Medical Office Building
- 20,225 Gross Square Feet
- Build-to-Suit Space for Lease
- Generous TI Allowance

CLICK FOR VIRTUAL  
TOUR OF LOBBY



CLICK FOR VIRTUAL TOUR  
OF COMMON AREA



## CONTACT

**ASHLEY CASSEL | SVP**

713.490.3785

ashley.cassel@transwestern.com

The information provided herein was obtained from sources believed reliable; however, Transwestern makes no guarantees, warranties or representations as to the completeness or accuracy thereof. The presentation of this property is submitted subject to errors, omissions, change of price or conditions, prior sale or lease, or withdrawal without notice. Copyright © 2018 Transwestern.