

# For Lease



## Wesley Chapel/SR 54 Office

5815 Argerian Drive | Wesley Chapel, FL 33545

- Quality Waterford construction combining beauty, function and value in this nicely laid out 1,250 SF
- Spacious, upscale reception, bull pen, breakroom and 2-3 private offices/conference room
- Conveniently located on SR 54, across from Saddlebrook Resort, West of Zephyrhills and East of Bruce B. Downs and I-75
- Ample parking and pylon signage
- **Lease Rate: \$15/SF modified gross**

**THERESA MARGARIS**

T: 727-238-3876 x305

M: 813-765-0948

tmargaris@holdthyssen.com

28163 U.S. Highway 19 N.

Suite 102

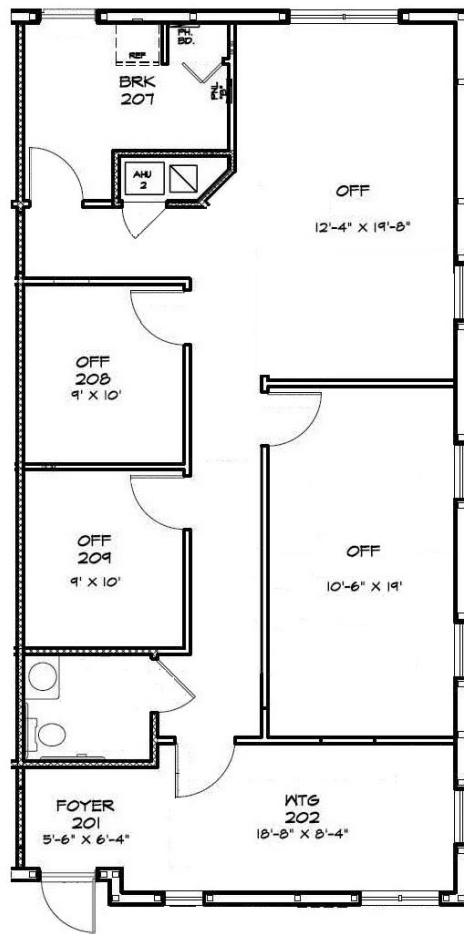
Clearwater, FL 33761

[www.holdthyssen.com](http://www.holdthyssen.com)

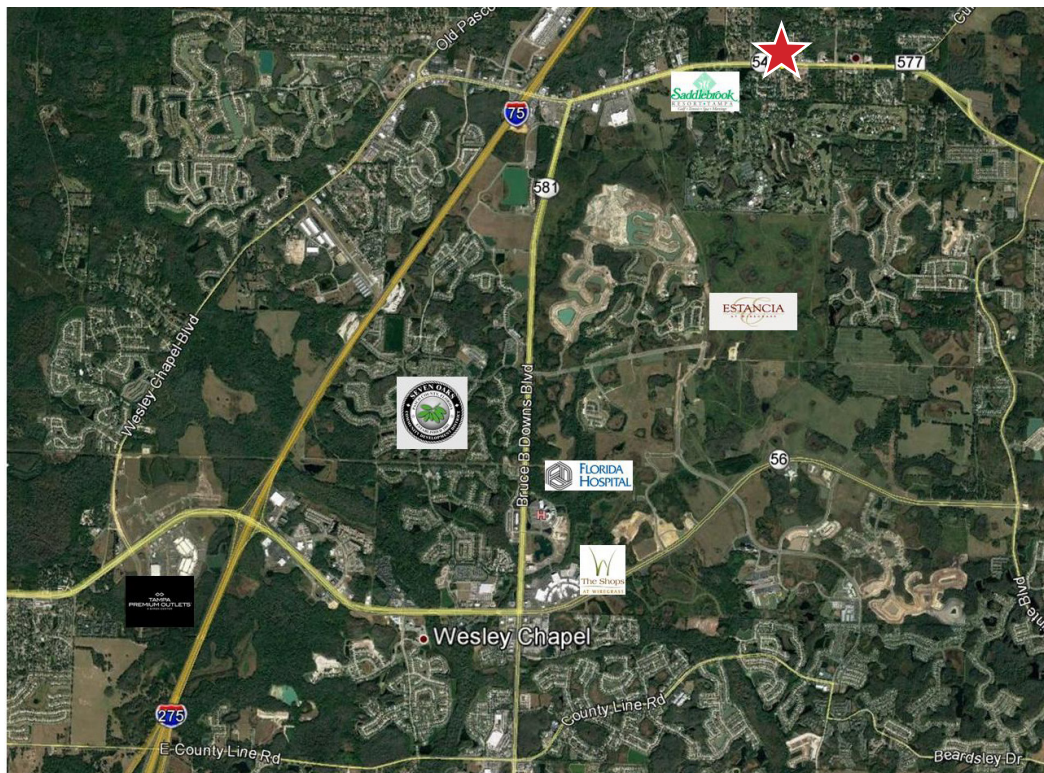




## FLOOR PLAN



## LOCATION



FOR MORE INFORMATION:



**THERESA MARGARIS**

[tmargaris@holdthyssen.com](mailto:tmargaris@holdthyssen.com)

T: 727-238-3876 x305

M: 813-765-0948

28163 U.S. Highway 19 N.

Suite 102

Clearwater, FL 33761



[www.holdthyssen.com](http://www.holdthyssen.com)

The information above has been obtained from sources believed reliable. While we do not doubt its accuracy we make no guarantee, warranty or representation about it. It is your responsibility to independently confirm its accuracy and completeness. Any projections, opinions, assumptions, or estimates used are for example only and do not represent the current or future performance of the property. Hold-Thyssen, Inc. is a licensed real estate broker.