

682 SIXTH AVENUE



SPACE DETAILS

LOCATION

East block between West 21st and 22nd Streets

APPROXIMATE SIZE

Ground Floor	1,550 SF
Basement	1,200 SF
Total	2,750 SF

CEILING HEIGHT

Ground Floor	14 FT 9 IN
--------------	------------

FRONTAGE

18 FT on Sixth Avenue

TERM

Long term

POSSESSION

Immediate

SITE STATUS

Formerly GameStop

NEIGHBORS

CAVA, Chipotle Mexican Grill, Bluemercury, Chick-fil-A, Best Buy, Trader Joe's, Starbucks, by Chloe. and Eatly

COMMENTS

Prime opportunity in the heart of Ladies' Mile/Chelsea

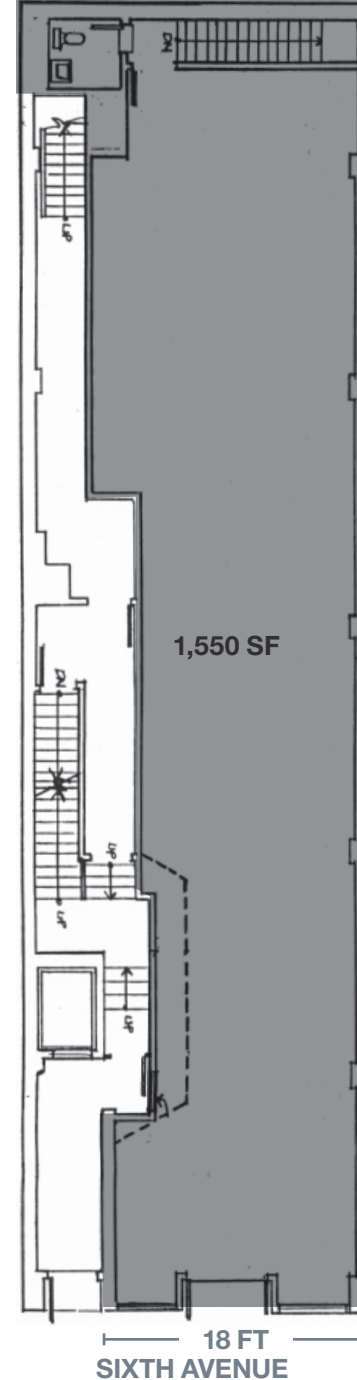
No food uses accepted

Seven-day-a-week shopping corridor

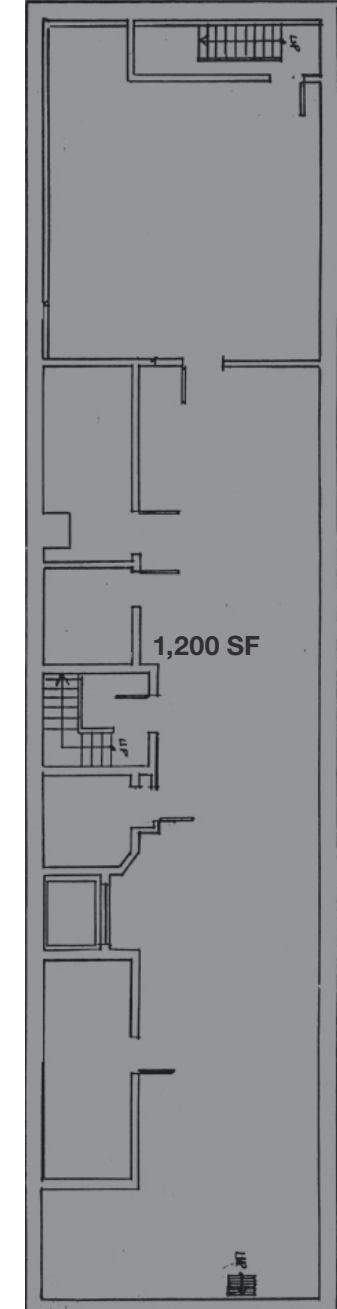
Dense residential and office population

Steps from the **1 F M N R** 

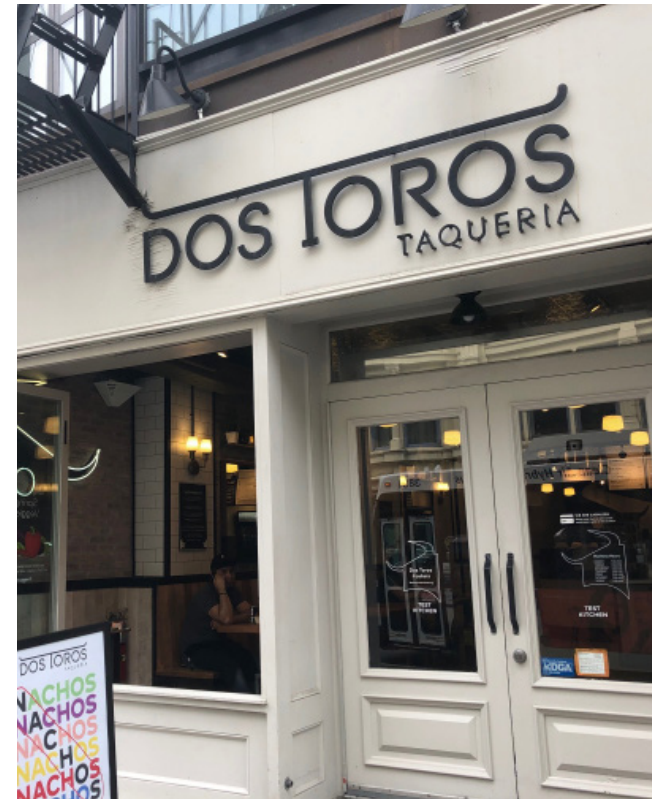
GROUND FLOOR



BASEMENT



AREA NEIGHBORS



AREA RETAIL



➕ COMING SOON

CONTACT EXCLUSIVE AGENTS

MARC FRANKEL
212.372.2240
mfrankel@ngkf.com

MITCH HEIFETZ
212.916.2934
mitchell.heifetz@ngkf.com

MICHAEL PASTER
212.351.9345
michael.paster@ngkf.com



NGKF.COM

© 2019 NEWMARK KNIGHT FRANK RETAIL. The information contained herein has been obtained from sources deemed reliable but has not been verified and no guarantee, warranty or representation, either express or implied, is made with respect to such information. Terms of sale or lease and availability are subject to change or withdrawal without notice.