



VACANT LAND FOR SALE

350-400 NW RD Mize Road, Blue Springs, Missouri



SALE PRICE: \$350,000 | 2.56 ACRES

usbank
DEMOGRAPHICS

	1 mile	3 miles	5 miles
Estimated Population	9,002	57,769	83,144
Avg. Household Income	\$56,924	\$84,436	\$86,881

- Retail/Office/Medical use
- Across from St. Mary's Medical Center
- Below market value
- Great location
- Near 7 Highway and Interstate 70



CLICK HERE TO VIEW MORE
LISTING INFORMATION

For More Information Contact:

DIMITRI RODOPOULOS | 816.412.7372 | drodopoulos@blockandco.com

BOB WALLEN | 816.412.7371 | bwallen@blockandco.com

Exclusive Agents

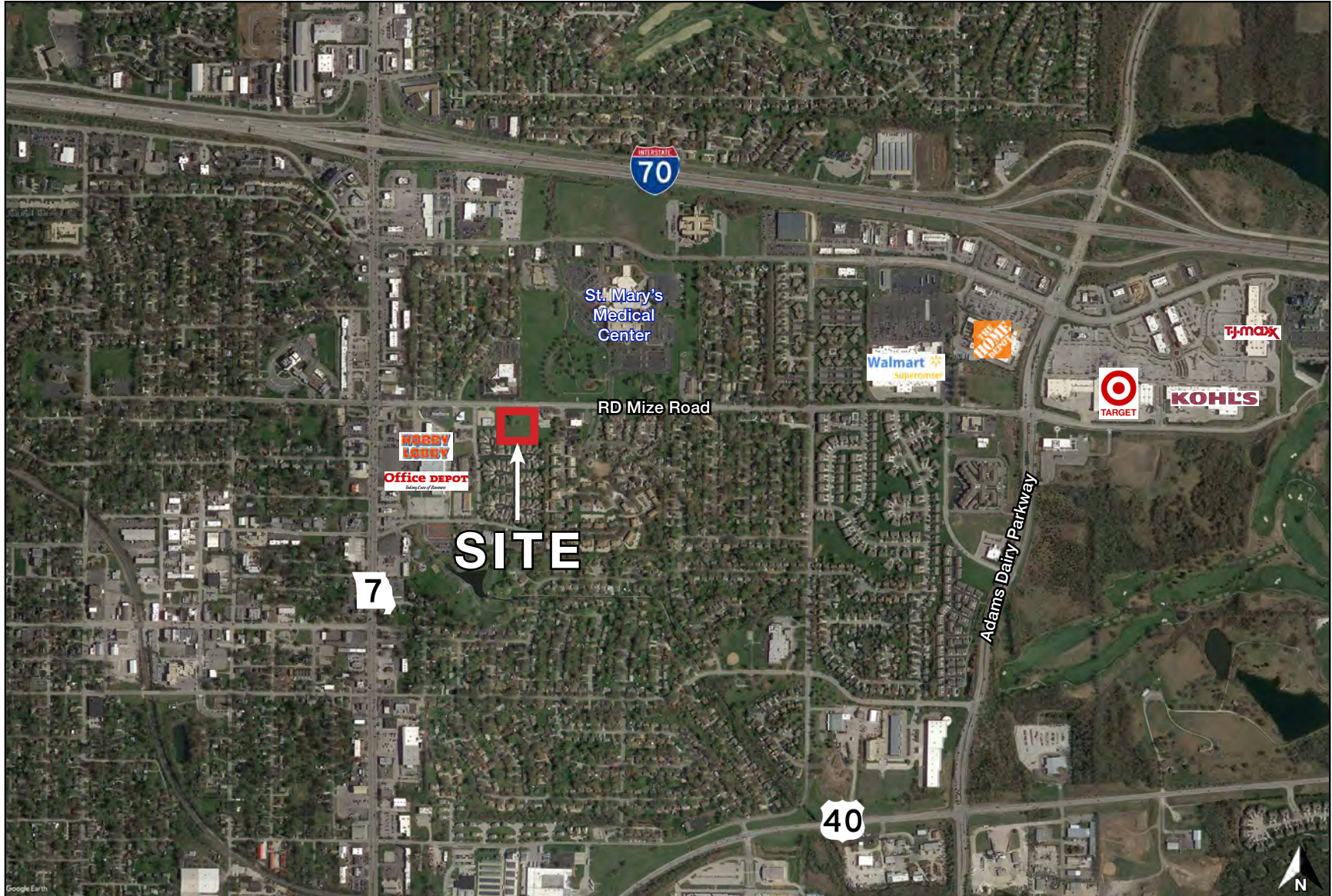




VACANT LAND FOR SALE

350-400 NW RD Mize Road, Blue Springs, Missouri

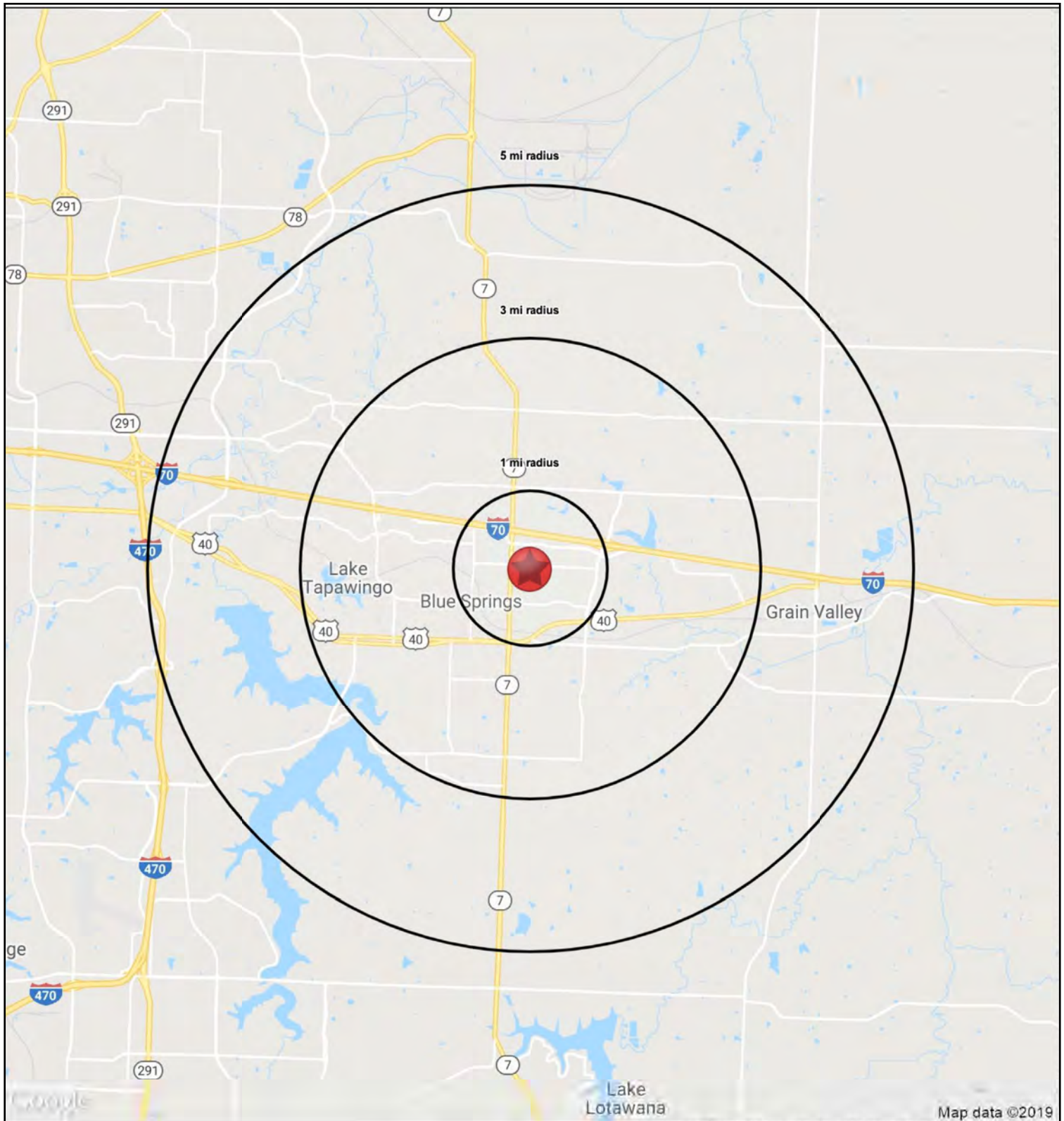
AERIAL





VACANT LAND FOR SALE

350-400 NW RD Mize Road, Blue Springs, Missouri





VACANT LAND FOR SALE

350-400 NW RD Mize Road, Blue Springs, Missouri

RS1

350-400 NW RD Mize Road		1 mi radius	3 mi radius	5 mi radius
Blue Springs, MO 64014				
POPULATION	2019 Estimated Population	9,002	57,769	83,144
	2024 Projected Population	9,201	59,266	85,218
	2010 Census Population	8,630	55,448	77,676
	2000 Census Population	8,613	49,341	63,333
	Projected Annual Growth 2019 to 2024	0.4%	0.5%	0.5%
	Historical Annual Growth 2000 to 2019	0.2%	0.9%	1.6%
	2019 Median Age	36.1	35.7	35.8
HOUSEHOLDS	2019 Estimated Households	3,991	22,619	32,534
	2024 Projected Households	4,036	22,992	33,027
	2010 Census Households	3,619	20,589	28,820
	2000 Census Households	3,648	17,834	22,864
	Projected Annual Growth 2019 to 2024	0.2%	0.3%	0.3%
	Historical Annual Growth 2000 to 2019	0.5%	1.4%	2.2%
RACE AND ETHNICITY	2019 Estimated White	82.8%	86.9%	87.7%
	2019 Estimated Black or African American	9.0%	6.0%	5.5%
	2019 Estimated Asian or Pacific Islander	1.9%	1.7%	1.9%
	2019 Estimated American Indian or Native Alaskan	0.5%	0.5%	0.4%
	2019 Estimated Other Races	5.8%	4.9%	4.5%
	2019 Estimated Hispanic	5.8%	5.6%	5.3%
INCOME	2019 Estimated Average Household Income	\$56,924	\$84,436	\$86,881
	2019 Estimated Median Household Income	\$55,567	\$76,127	\$78,325
	2019 Estimated Per Capita Income	\$25,284	\$33,078	\$34,018
EDUCATION (AGE 25+)	2019 Estimated Elementary (Grade Level 0 to 8)	1.3%	0.9%	1.0%
	2019 Estimated Some High School (Grade Level 9 to 11)	7.9%	4.3%	4.4%
	2019 Estimated High School Graduate	27.8%	26.5%	26.9%
	2019 Estimated Some College	25.8%	25.0%	24.5%
	2019 Estimated Associates Degree Only	9.4%	8.6%	8.3%
	2019 Estimated Bachelors Degree Only	17.9%	22.9%	22.9%
	2019 Estimated Graduate Degree	10.0%	11.7%	12.0%
BUSINESS	2019 Estimated Total Businesses	843	2,023	2,907
	2019 Estimated Total Employees	9,797	23,270	33,034
	2019 Estimated Employee Population per Business	11.6	11.5	11.4
	2019 Estimated Residential Population per Business	10.7	28.6	28.6