

4015-4059 W Dublin-Granville Rd
Dublin, OH 43017

For Lease



STONERIDGE MEDICAL & OFFICE CENTER BUILT-OUT MEDICAL SPACE AVAILABLE NOW

Lease Rates:
\$12.95-\$16.95 PSF Net

Available Medical & Office
Space:
2,296 SF to 16,028 SF

2022 Estimated Operating
Expenses: \$9.26
(excludes utilities/janitorial)

- Well located in Dublin between Sawmill Rd and US 33; 1 mile to Sawmill Rd/I-270 interchange.
- Visible to 23,000 vehicles per day on Dublin-Granville Rd
- Monument signage on Dublin-Granville Rd
- Adjacent to new \$300MM Dublin Bridge Park Development
- Minutes to Dublin Methodist Hospital
- New ownership ready to welcome new medical and office tenants
- Join Ohio State University Imaging & OB Gyn in this property



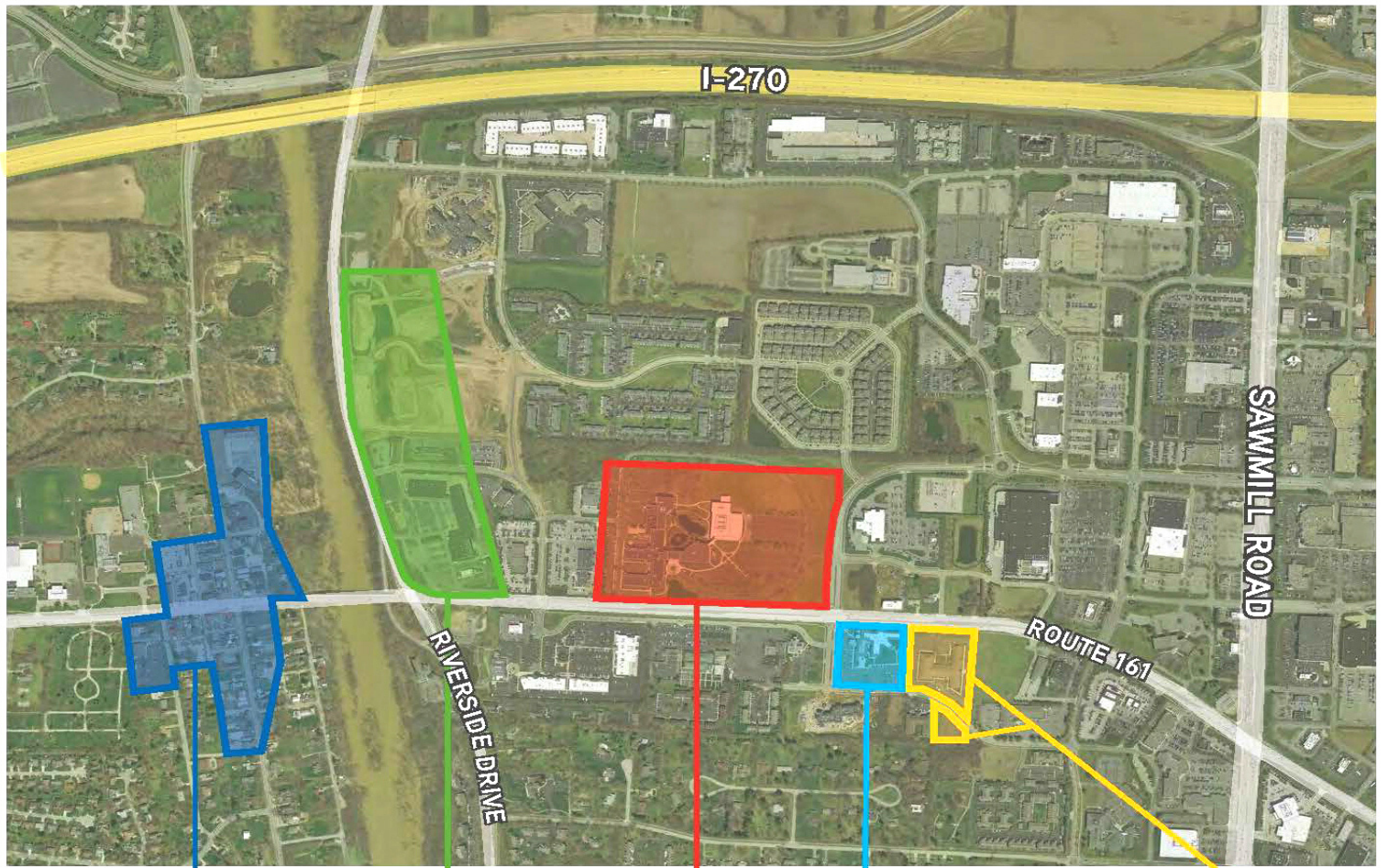
Amy E. Osborn
614.378.8898
aosborn@AlterraRE.com

Brad Kitchen, SIOR
614.545.2155
bkitchen@AlterraRE.com

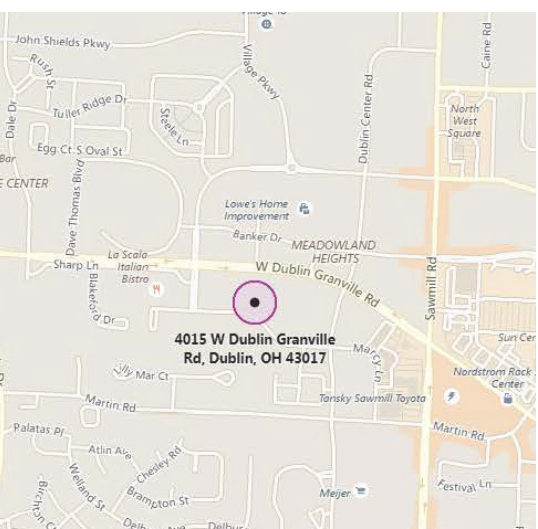
Alterra Real Estate
614.365.9000
www.AltterraRE.com



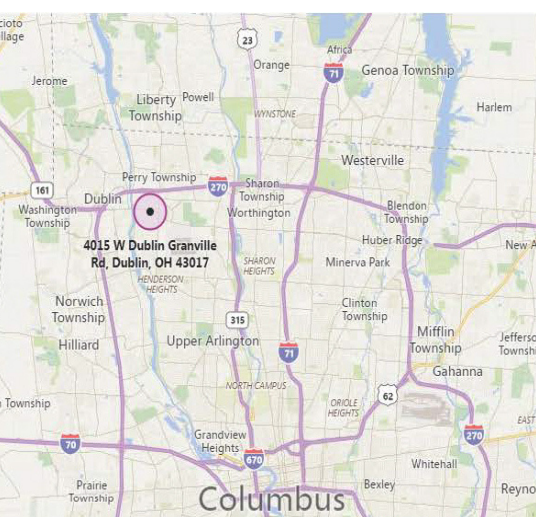




DOWNTOWN DUBLIN **BRIDGE PARK DISTRICT** **WENDY'S HEADQUARTER** **SUNRISE ASSISTED LIVING** **STONERIDGE CENTER**



4015 W Dublin Granville Rd, Dublin, OH 43017



4015 W Dublin Granville Rd, Dublin, OH 43017



STONERIDGE MEDICAL & OFFICE CENTER

AVAILABLE SPACE

