

2341 ENTERPRISE DRIVE
JACKSON, MICHIGAN

INDUSTRIAL FOR SALE OR LEASE
12,410 Square Feet Available



**SIGNATURE
ASSOCIATES**
KNOW SIGNATURE | KNOW RESULTS

M & K JETTING



PROPERTY FEATURES

- 12,410 square feet available
- 2,247 square feet of office, (4) private offices
- 15'-16' clear height
- (2) 12x14 grade level doors, (1) truckwell
- Zoned Industrial, I-2
- 800 amps, 480 volts, 3-phase power
- Well-maintained freestanding building
- Drive-thru capability, trench drain and additional 1.6 acres for future expansions!
- This building is eligible for Marijuana approval by the City of Jackson
- Lease Rate: \$6.70/sq.ft. NNN
- Sale Price: \$895,000 (\$72.12/sq.ft.)



For more information, please contact:

JACK TOWNSEND
(248) 948 0115
jtownsend@signatureassociates.com

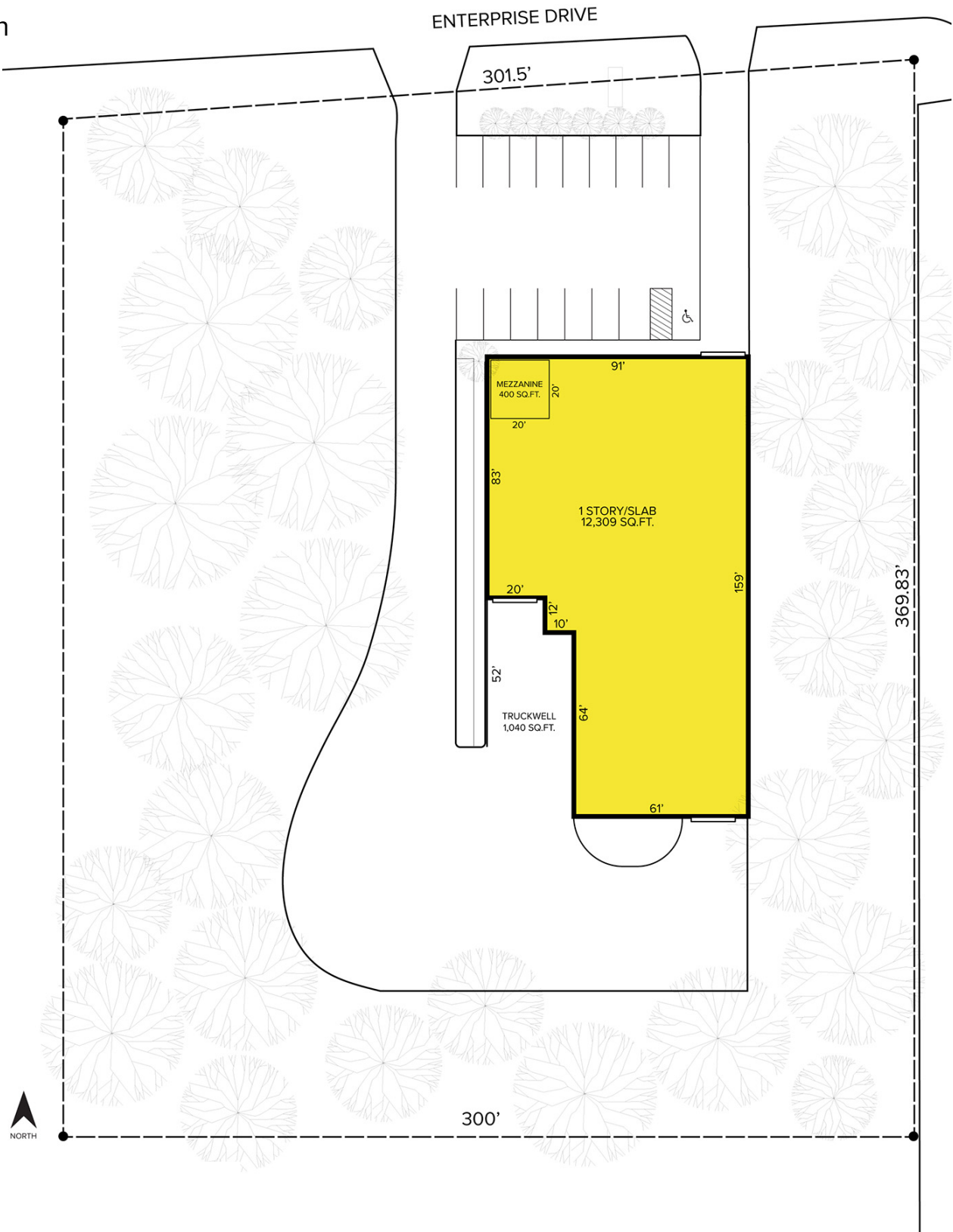
SIGNATURE ASSOCIATES
One Towne Square, Suite 1200
Southfield, MI 48076
www.signatureassociates.com

2341 Enterprise Drive – Jackson, Michigan

Industrial For Sale or Lease

12,410
Square Feet
AVAILABLE

Site Plan



For more information, please contact:

JACK TOWNSEND
(248) 948 0115
jtownsend@signatureassociates.com

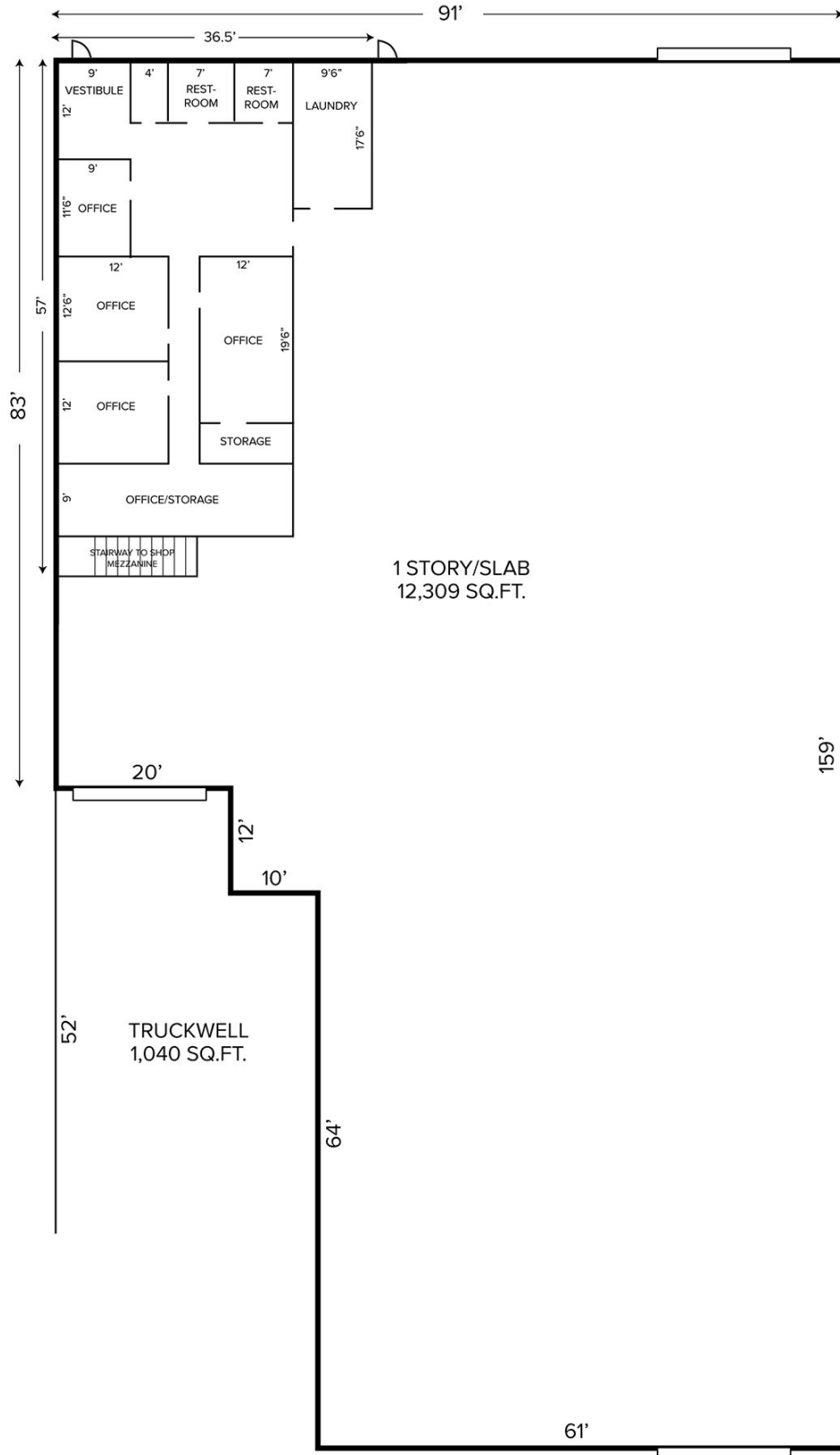
SIGNATURE ASSOCIATES
One Towne Square, Suite 1200
Southfield, MI 48076
www.signatureassociates.com

2341 Enterprise Drive – Jackson, Michigan

Industrial For Sale or Lease

12,410
Square Feet
AVAILABLE

Floor Plan



For more information, please contact:

JACK TOWNSEND
(248) 948 0115
jtownsend@signatureassociates.com

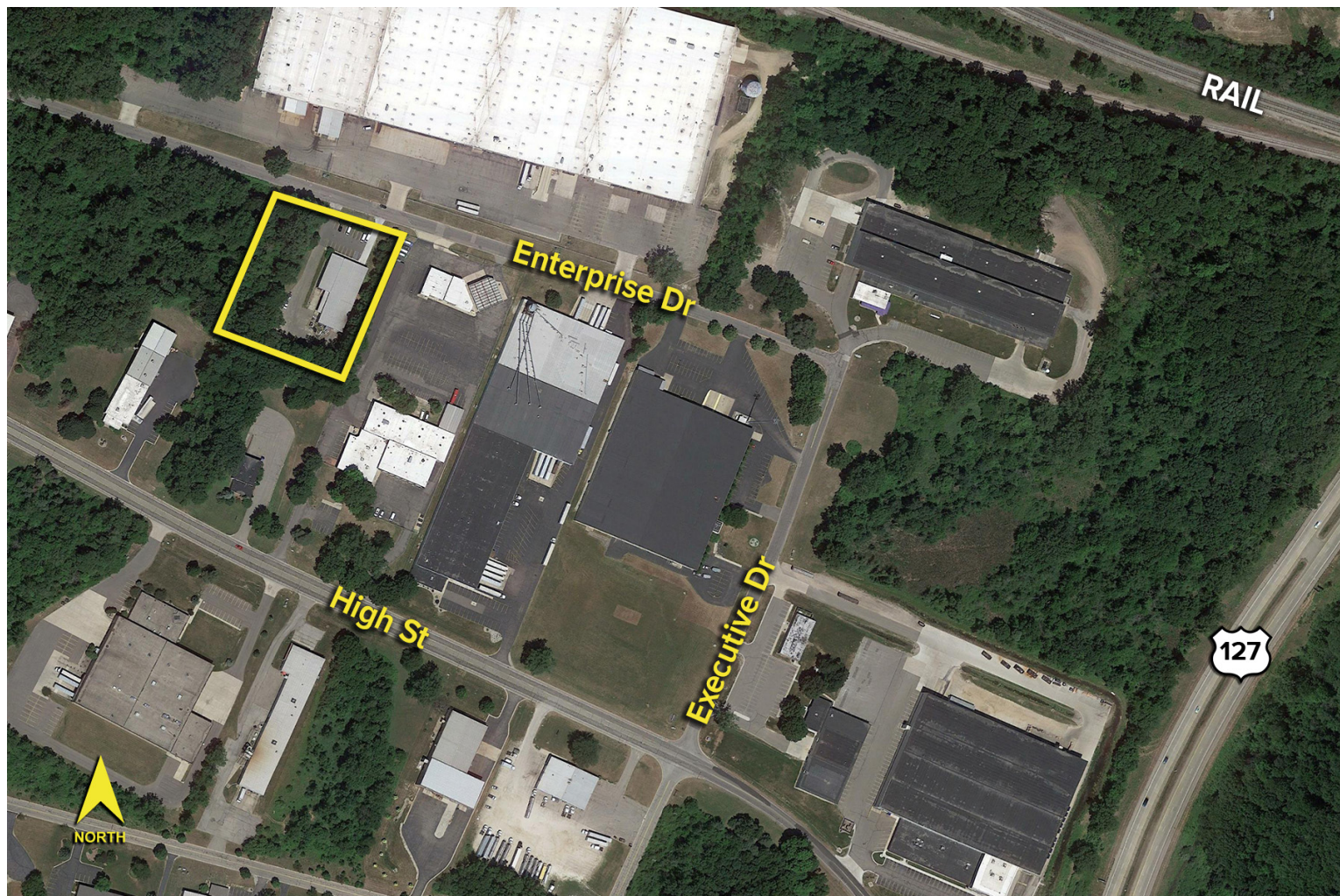
SIGNATURE ASSOCIATES
One Towne Square, Suite 1200
Southfield, MI 48076
www.signatureassociates.com

2341 Enterprise Drive – Jackson, Michigan

Industrial For Sale or Lease

12,410
Square Feet
AVAILABLE

Aerial



For more information, please contact:

JACK TOWNSEND
(248) 948 0115
jtownsend@signatureassociates.com

SIGNATURE ASSOCIATES
One Towne Square, Suite 1200
Southfield, MI 48076
www.signatureassociates.com

Information is subject to verification and no liability for errors or omissions is assumed. Price is subject to change and listing withdrawal.