



Dewey Property Advisors

10 BROOK STREET



OFFICE BUILDING FOR LEASE

10 BROOK STREET, ASHEVILLE, NC 28803

Presented By

TIM BRAMLEY, CCIM

828.548.0090 x103
tim.bramley@deweypa.com

DEWEY PROPERTY ADVISORS

1 Page Avenue
Asheville, NC 28801
828.548.0090
deweypa.com

EXECUTIVE SUMMARY



OFFERING SUMMARY

Lease Rate:	\$26.75 SF/yr
Available SF:	1,999 - 2,036 SF
Lease Type:	NNN
Year Built:	2007
Building Size:	111,000
Zoning:	CBII
Market:	Asheville
Submarket:	Biltmore Village
Traffic Count:	16,000

PROPERTY OVERVIEW

2 Office Suites Now Available

Suite 217 is a Class A office, 2,036 square feet consisting of reception, conference room, break room, restroom and five offices in move-in condition.

Suite 247 is a 1,999-square foot shell ready for upfit with TI allowance available.

Ample off-street, on-site parking. Parking deck behind Williams-Sonoma.

AVAILABLE SPACES

SPACE	LEASE RATE	SIZE (SF)
Suite 217	\$26.75 SF/yr	2,036 SF
Suite 247	\$26.75 SF/yr	1,999 SF



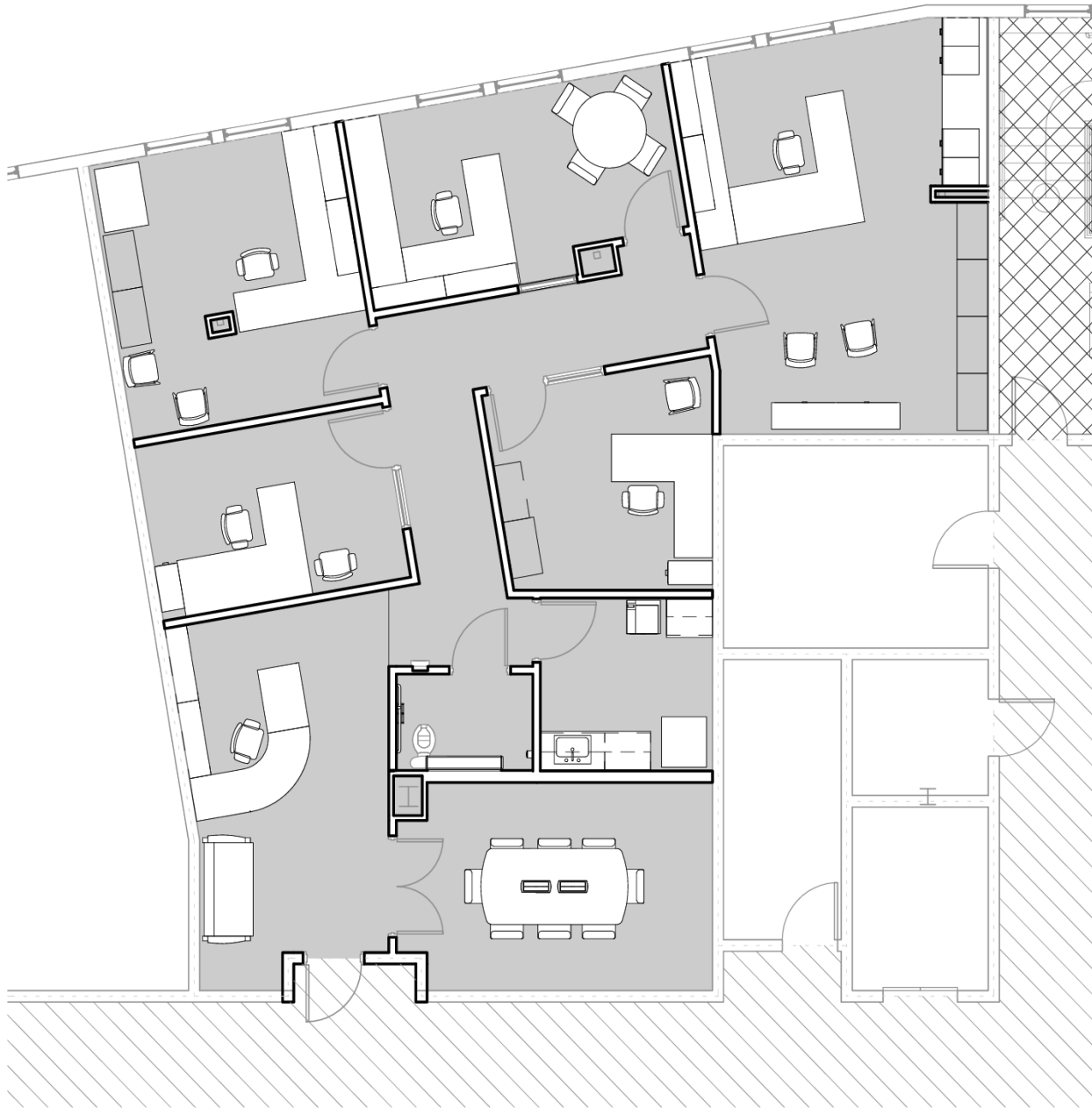
TIM BRAMLEY, CCIM
828.548.0090 x103
tim.bramley@deweypa.com

ADDITIONAL PHOTOS



TIM BRAMLEY, CCIM
828.548.0090 x103
tim.bramley@deweypa.com

SUITE 217 FLOOR PLAN

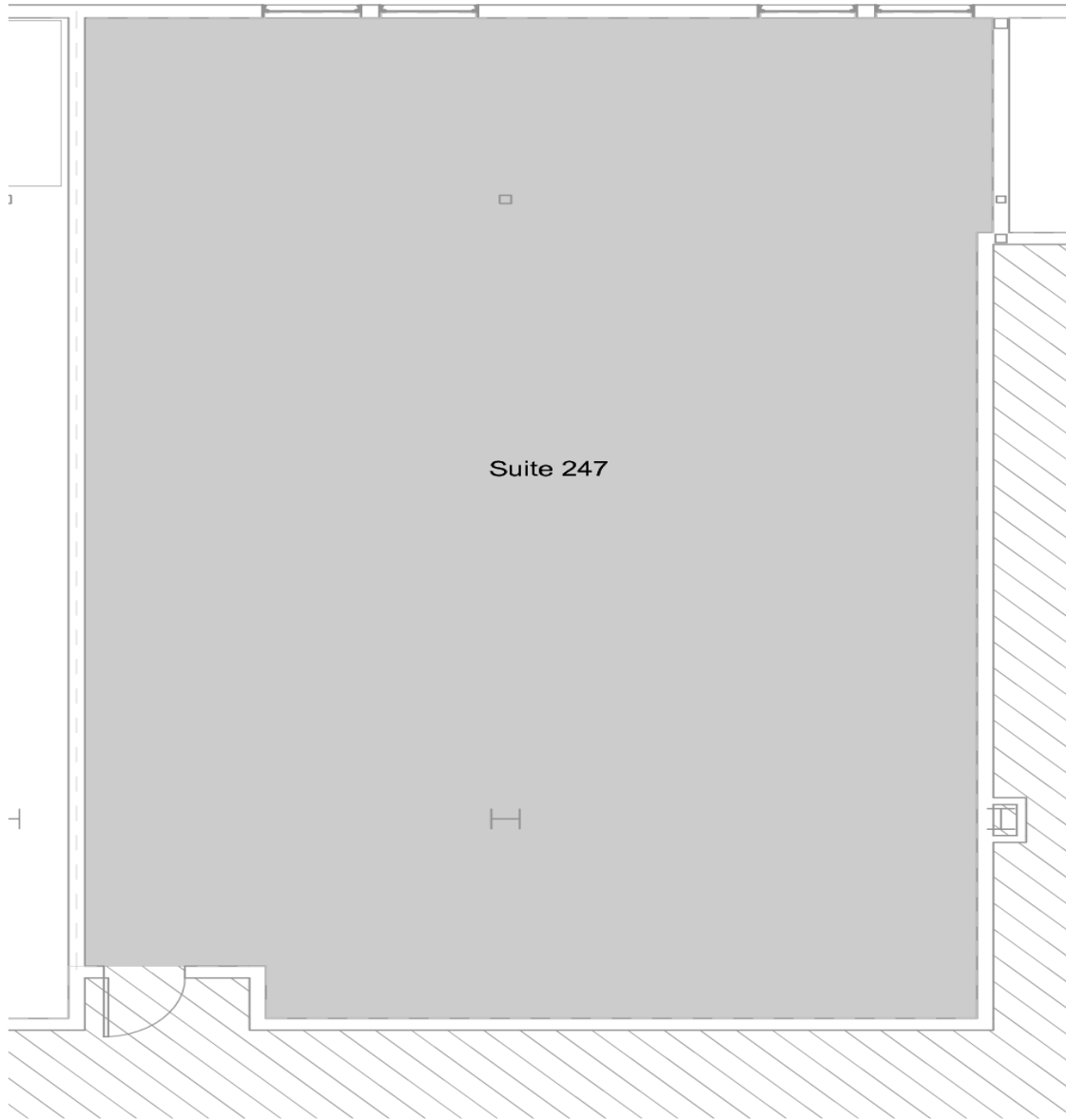


① Suite Plan
1/8" = 1'-0"



TIM BRAMLEY, CCIM
828.548.0090 x103
tim.bramley@deweypa.com

SUITE 247 FLOOR PLAN



① Suite 247
1/8" = 1'-0"



10 BROOK STREET | 10 BROOK STREET, ASHEVILLE, NC 28803

LOCATION MAPS



TIM BRAMLEY, CCIM
828.548.0090 x103
tim.bramley@deweypa.com