



FOR LEASE

# 2222-2232 SANTA MONICA BLVD

SANTA MONICA, CALIFORNIA



**RENTAL RATE:**

\$3.55/SF per month

**PARKING:**

3/1000 @ \$99/month

**TERM:**

5-10 Years

**BUILDING AMENITIES:**

- Directly across street from St. John’s Hospital
- On-site pharmacy
- Walking Distance to numerous amenities
- On-site management

**AVAILABILITIES**

**2222 SANTA MONICA**

Suite 200:	995 RSF	\$3.55/SF FSG
Suite 203:	1,162 RSF	
	Can be combined to 2,157 RSF	
Suite 302:	1,355 RSF	\$3.55/SF FSG
Suite 307:	1,465 RSF	\$3.55/SF FSG
Suite 403:	889 RSF	\$3.55/SF FSG
Suite 406:	453 RSF	\$3.55/SF FSG

**2232 SANTA MONICA**

Suite 101:	4,986 RSF	\$3.55/SF FSG
Basement:	3,256 RSF	\$2.25/SF FSG

**FOR MORE INFORMATION PLEASE CONTACT**

**STAN GERLACH** | Lic. 01520962 | T +1 310 550 2662 | [stan.gerlach@cbre.com](mailto:stan.gerlach@cbre.com)

**JEFF GERLACH** | Lic. 01942825 | T +1 310 550 2507 | [jeffery.gerlach@cbre.com](mailto:jeffery.gerlach@cbre.com)

CBRE | 1840 Century Park East | Suite 900 | Beverly Hills, CA 90067 | [www.cbre.com/beverlyhills](http://www.cbre.com/beverlyhills)





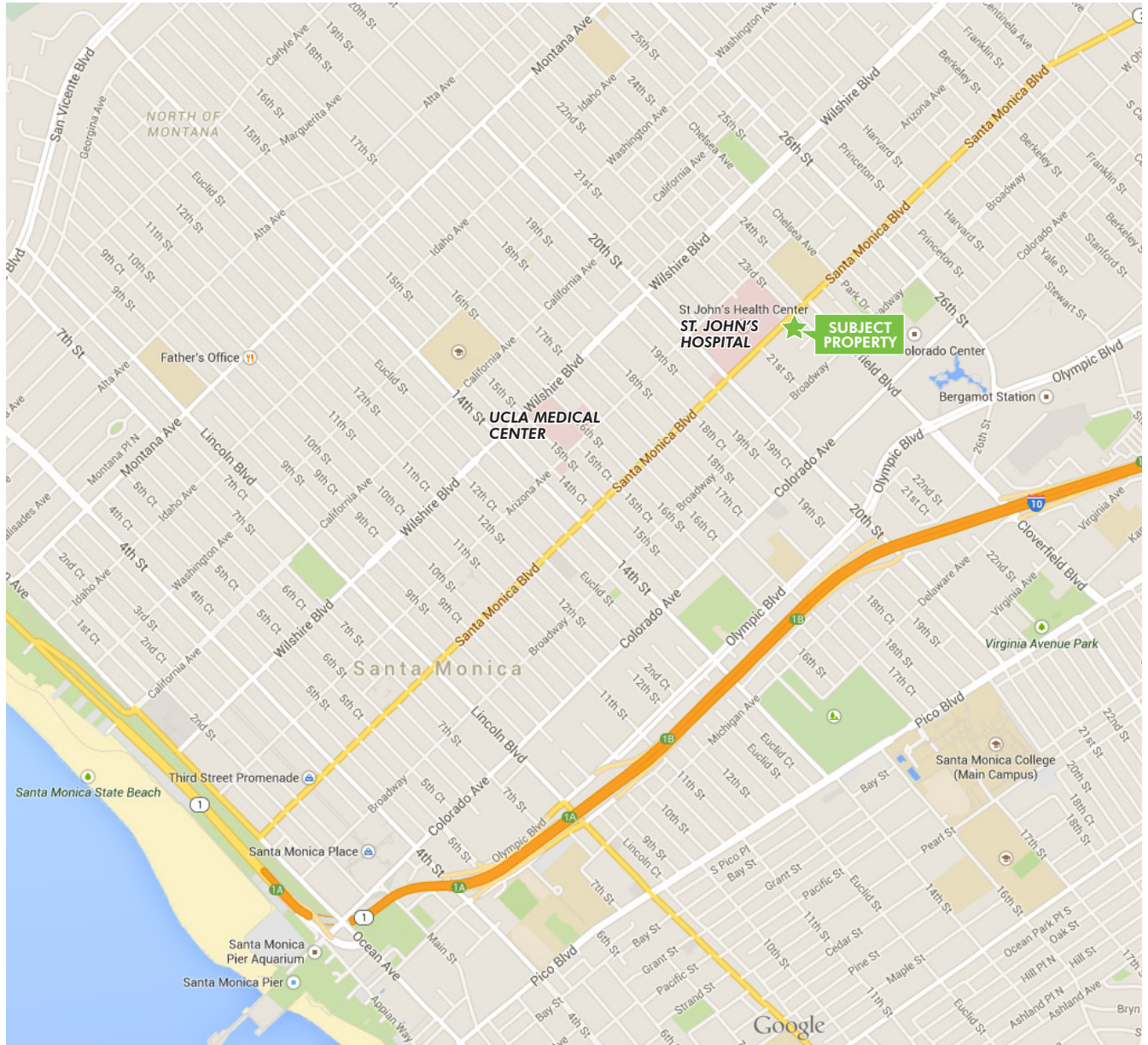


FOR LEASE

# 2222-2232 SANTA MONICA BLVD

SANTA MONICA, CALIFORNIA

## 2222 SANTA MONICA LOCATION MAP



FOR MORE INFORMATION PLEASE CONTACT

**STAN GERLACH** | Lic. 01520962 | T +1 310 550 2662 | [stan.gerlach@cbre.com](mailto:stan.gerlach@cbre.com)

**JEFF GERLACH** | Lic. 01942825 | T +1 310 550 2507 | [jeffrey.gerlach@cbre.com](mailto:jeffrey.gerlach@cbre.com)

CBRE | 1840 Century Park East | Suite 900 | Beverly Hills, CA 90067 | [www.cbre.com/beverlyhills](http://www.cbre.com/beverlyhills)

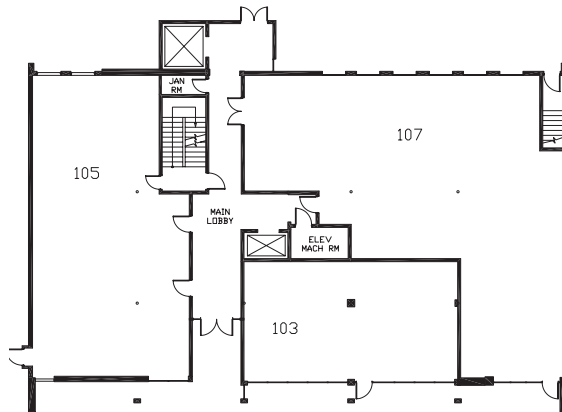


FOR LEASE

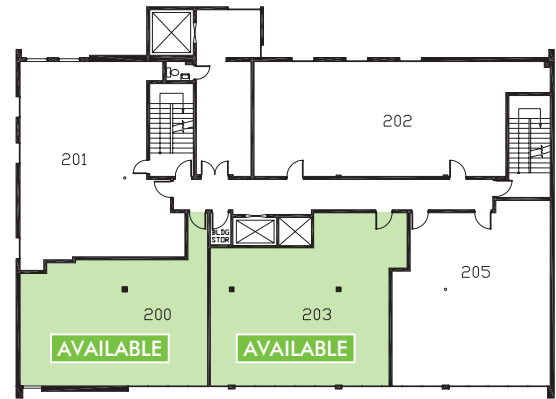
# 2222-2232 SANTA MONICA BLVD

SANTA MONICA, CALIFORNIA

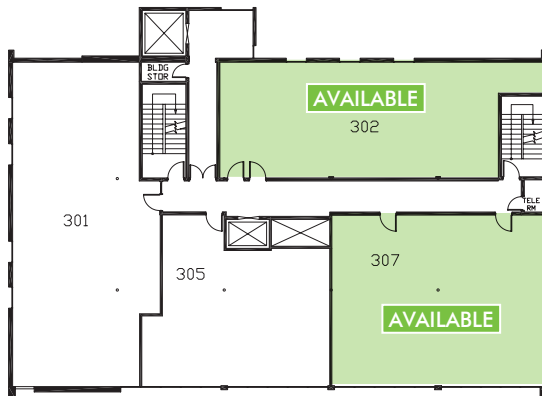
## 2222 SANTA MONICA FLOOR PLANS



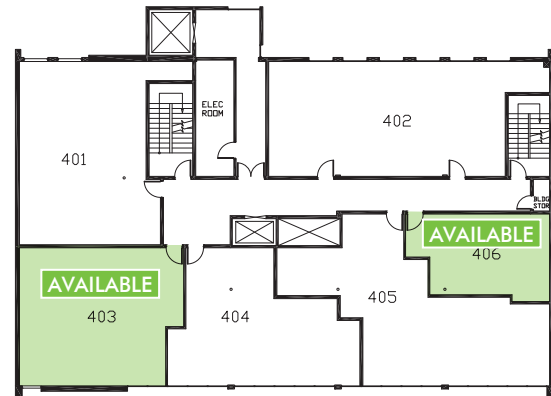
FLOOR 1



FLOOR 2



FLOOR 3



FLOOR 4

### FOR MORE INFORMATION PLEASE CONTACT

**STAN GERLACH** | Lic. 01520962 | T +1 310 550 2662 | [stan.gerlach@cbre.com](mailto:stan.gerlach@cbre.com)

**JEFF GERLACH** | Lic. 01942825 | T +1 310 550 2507 | [jeffery.gerlach@cbre.com](mailto:jeffery.gerlach@cbre.com)

CBRE | 1840 Century Park East | Suite 900 | Beverly Hills, CA 90067 | [www.cbre.com/beverlyhills](http://www.cbre.com/beverlyhills)