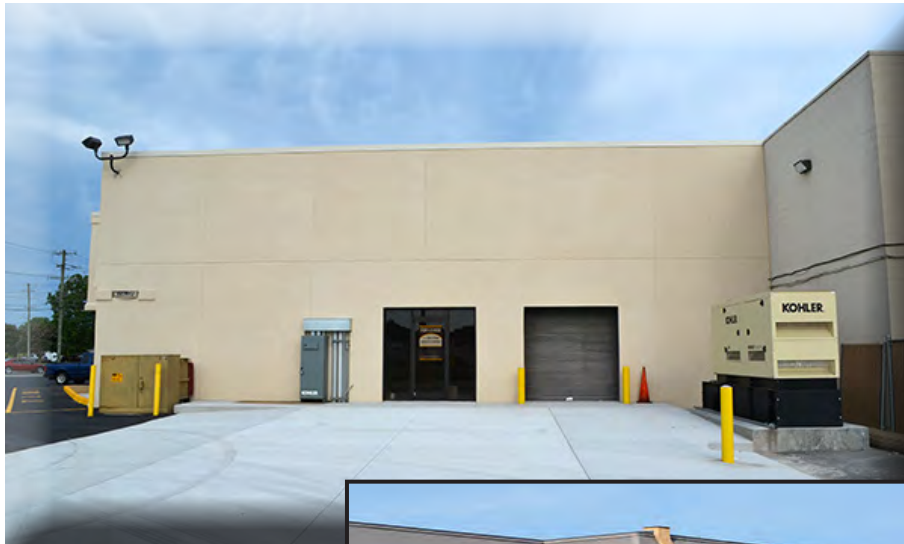


# PLANET FITNESS PLAZA

Churchland Boulevard/Tyre Neck Rd/West Norfolk Rd  
Portsmouth, VA

**FLEX SPACE AVAILABLE**



- Approx. 4,931 SF flex space available with grade level overhead door
- Ideal for contractor's office or other similar use
- Mezzanine available
- Other tenants include Planet Fitness Plaza and Fresenius Kidney Care
- Convenient to Western Freeway (Rte. 164) and I-664

## Demographics (2017)

	1 Mile	3 Miles	5 Miles
Population	11,900	64,608	135,703
Households	4,988	24,450	49,975
Ave. HH Inc.	\$65,368	\$76,960	\$73,393

CONTACT:

**LARRY HECHT**  
Senior Vice President  
Phone: (757) 640-8230  
[larryhecht@harveylindsay.com](mailto:larryhecht@harveylindsay.com)

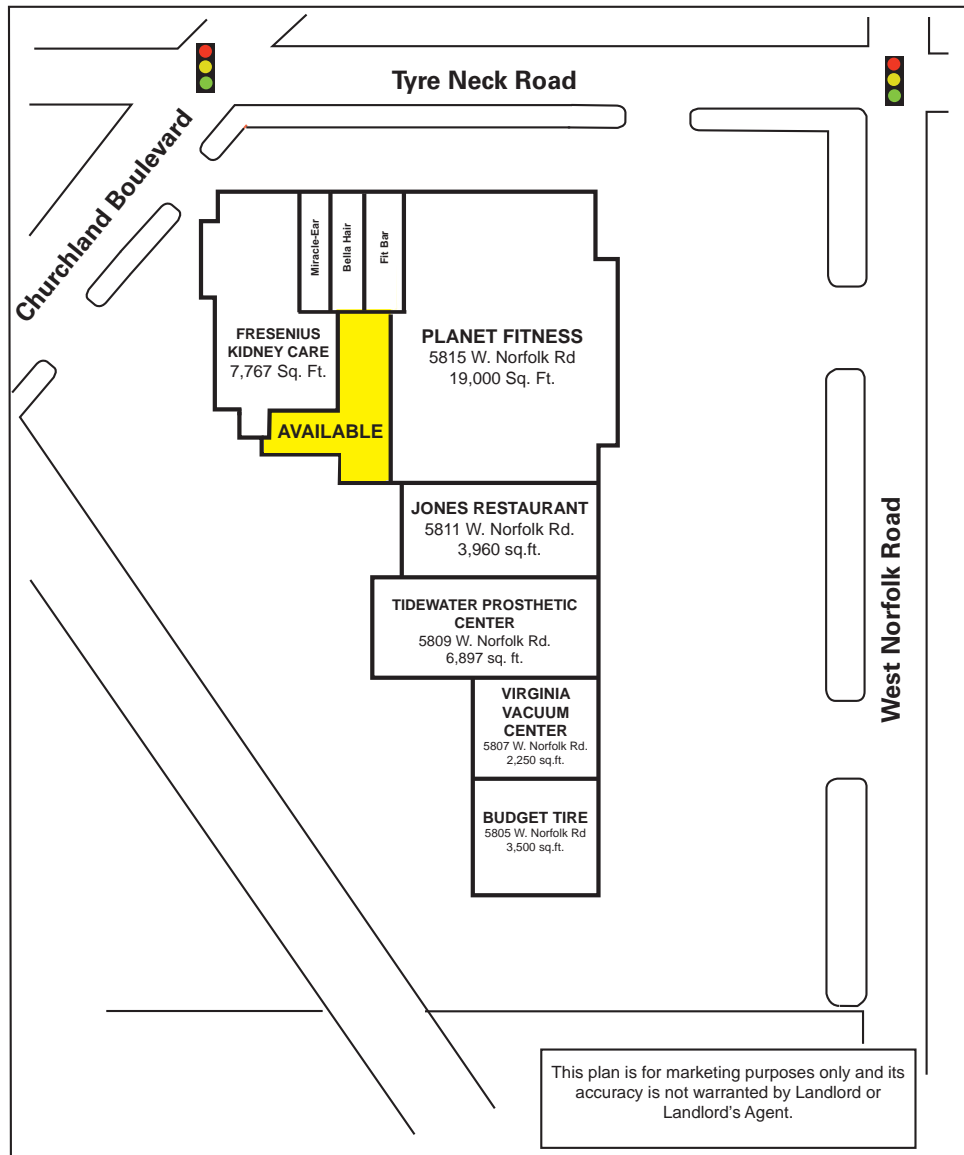
**HARVEY LINDSAY**  
COMMERCIAL REAL ESTATE

*A Tradition of Forward Thinking*

# PLANET FITNESS PLAZA

Churchland Boulevard/Tyre Neck Rd/West Norfolk Rd  
Portsmouth, VA

HARRISTEETER  
SUPERMARKET



CONTACT:

**LARRY HECHT**  
**(757) 640-8230**

[larryhecht@harveylindsay.com](mailto:larryhecht@harveylindsay.com)

**HARVEY LINDSAY**

COMMERCIAL REAL ESTATE

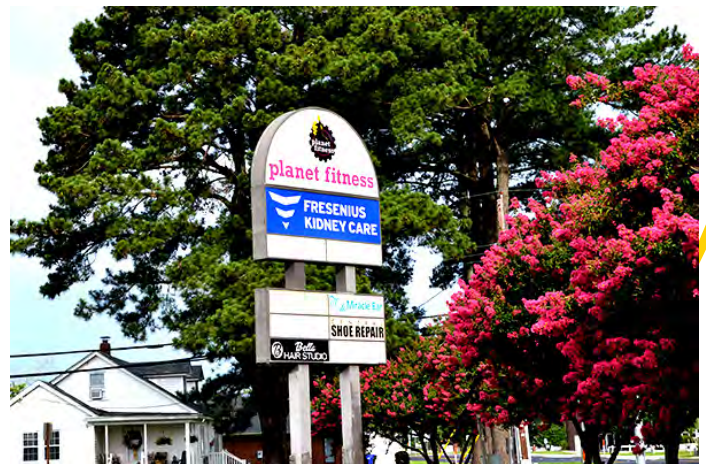
*A Tradition of Forward Thinking*

The information contained herein has been obtained from sources believed to be reliable but is not warranted.  
We cannot be responsible for errors, omissions, withdrawal, or prior lease or sale.

# PLANET FITNESS PLAZA

Churchland Boulevard/Tyre Neck Rd/West Norfolk Rd  
Portsmouth, VA

3 Pylon Signs



CONTACT:

**LARRY HECHT**  
**(757) 640-8230**

[larryhecht@harveylindsay.com](mailto:larryhecht@harveylindsay.com)

**HARVEY LINDSAY**

COMMERCIAL REAL ESTATE

*A Tradition of Forward Thinking*

The information contained herein has been obtained from sources believed to be reliable but is not warranted.  
We cannot be responsible for errors, omissions, withdrawal, or prior lease or sale.