

**1111 HOWE AVE  
SACRAMENTO, CA**

**FOR LEASE**

**832 SF - 3,744 SF AVAILABLE**

**ETHAN CONRAD**  
PROPERTIES INC.



**MAJOR REMODEL COMPLETED**

FOR MORE INFORMATION CONTACT:

**Grant Keeney**

DRE: #00891996

grant@ethanconradprop.com

**Ethan Conrad**

DRE: #01298662

ethan@ethanconradprop.com

**916.779.1000**

ETHAN CONRAD PROPERTIES, INC.

1300 NATIONAL DRIVE, SUITE 100 | SACRAMENTO CA, 95834 | FAX: 916.779.1200

www.ethanconradprop.com



**SPACES AVAILABLE:**

Suite 160:	3,109 SF	\$5,285.00	(\$1.70 PSF)
Suite 265:	1,990 SF	\$3,383.00	(\$1.70 PSF)
Suite 455:	1,535 SF	\$2,610.00	(\$1.70 PSF)
Suite 505:	3,457 SF	\$5,877.00	(\$1.70 PSF)
Suite 520:	1,595 SF	\$2,712.00	(\$1.70 PSF)
Suite 555*:	1,192 SF	\$2,026.00	(\$1.70 PSF)
Suite 575:	832 SF	\$1,414.00	(\$1.70 PSF)
Suite 630:	3,744 SF	\$6,365.00	(\$1.70 PSF)
Suite 645:	1,133 SF	\$1,983.00	(\$1.75 PSF)

Full Service

\*Available with 15 days notice.



**PROPERTY DETAILS:**

Proximate to many retail and restaurant options including Arden Fair Mall and the updated Howe Bout Arden. Excellent central location with access to Hwy 80 and Hwy 50.

**FEATURES:**

- Immediate occupancy available
- Very attractive two story lobbies for all 3 buildings
- On-site amenities include Conference Room, Fitness Center/showers (1st floor)
- Abundant 4:1,000 SF parking ratio Additional parking available
- Attractive mature landscaping
- Tenant improvements available
- Building signage available

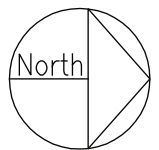
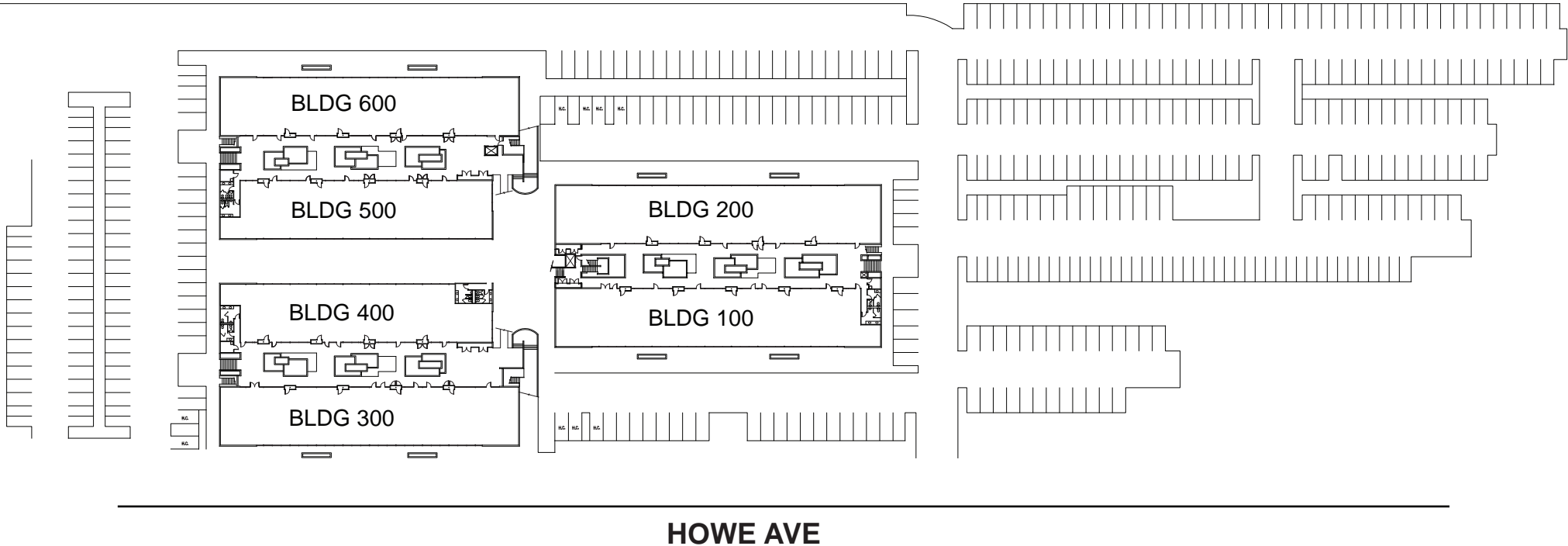
**Grant Keeney**  
DRE: #00891996  
grant@ethanconradprop.com

**Ethan Conrad**  
DRE: #01298662  
ethan@ethanconradprop.com

**ETHAN CONRAD PROPERTIES, INC.**  
1300 NATIONAL DRIVE, SUITE 100 | SACRAMENTO CA, 95834 | 916.779.1000  
www.ethanconradprop.com

SITE PLAN

ADDITIONAL PARKING



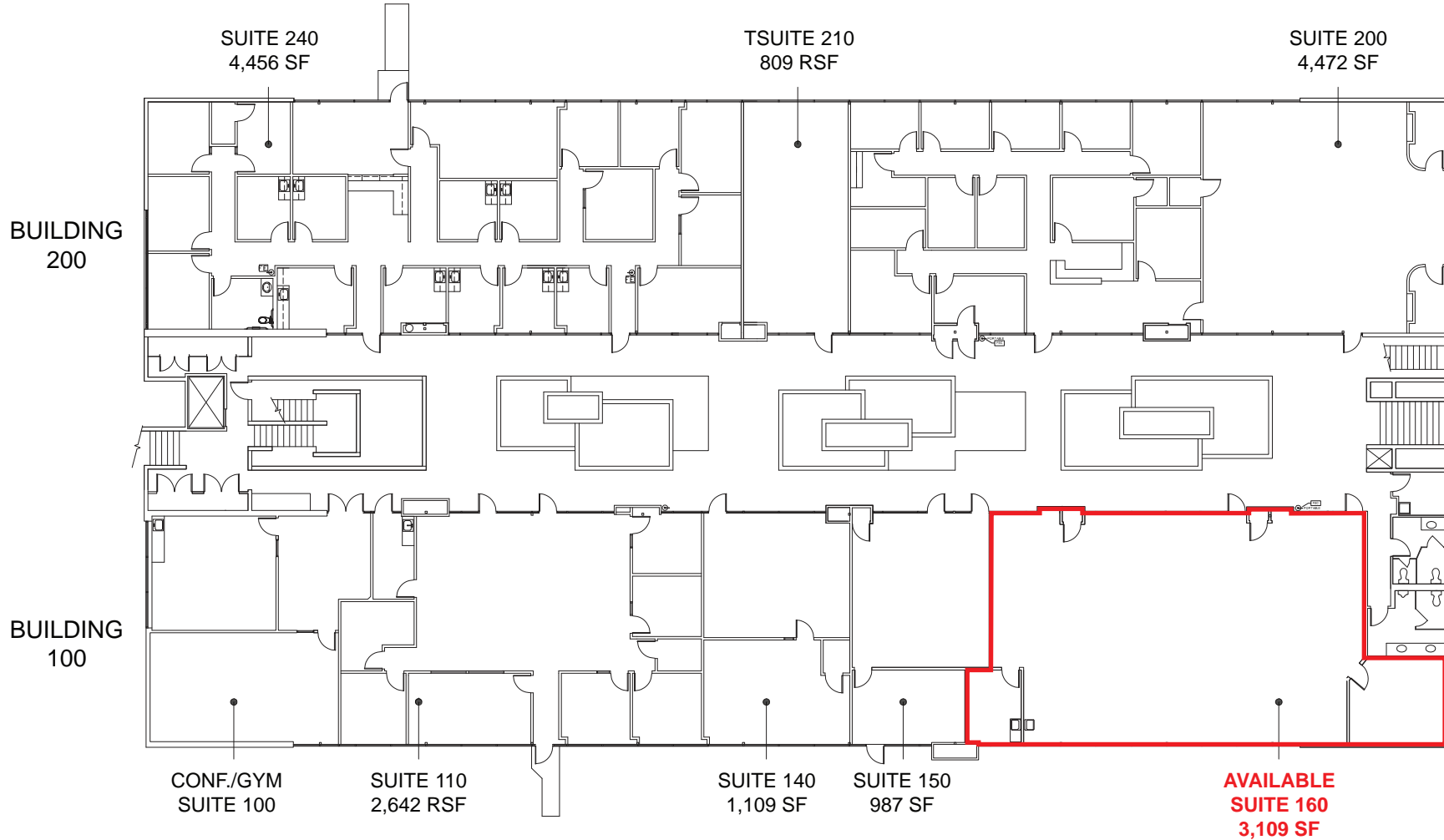
**Grant Keeney**  
DRE: #00891996  
grant@ethanconradprop.com

**Ethan Conrad**  
DRE: #01298662  
ethan@ethanconradprop.com

**ETHAN CONRAD PROPERTIES, INC.**  
1300 NATIONAL DRIVE, SUITE 100 | SACRAMENTO CA, 95834 | 916.779.1000  
www.ethanconradprop.com

The information contained herein has been obtained from sources we believe to be reliable. However, we cannot guarantee, warrant or represent its accuracy and all information is subject to error, change or withdrawal. An interested party and their advisors should conduct an independent investigation of the property to determine to your satisfaction the suitability of the property for your needs.

1111 HOWE AVE - BUILDING 100 & 200 1ST FLOOR



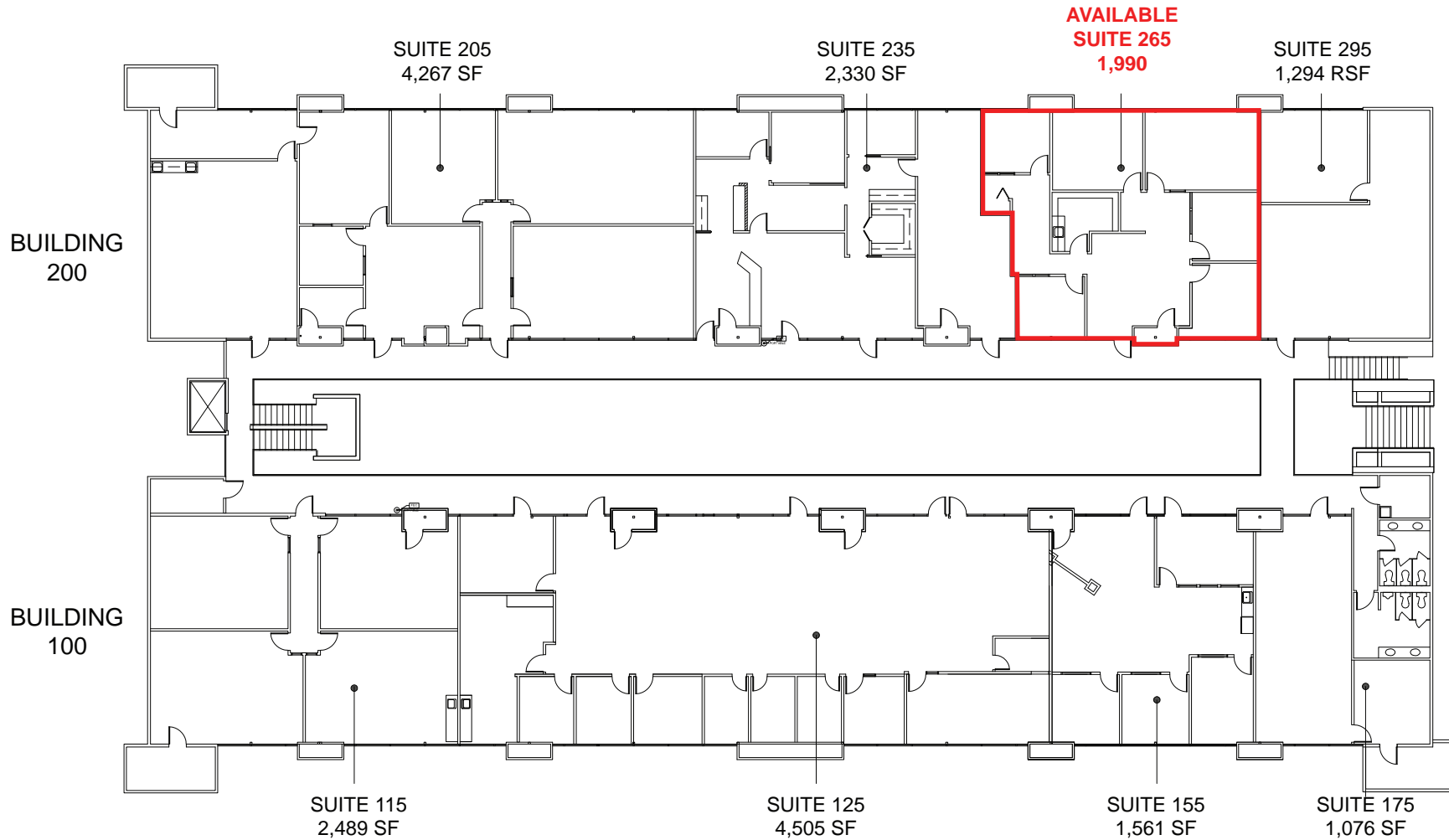
**Grant Keeney**  
DRE: #00891996  
grant@ethanconradprop.com

**Ethan Conrad**  
DRE: #01298662  
ethan@ethanconradprop.com

**ETHAN CONRAD PROPERTIES, INC.**  
1300 NATIONAL DRIVE, SUITE 100 | SACRAMENTO CA, 95834 | 916.779.1000  
www.ethanconradprop.com

The information contained herein has been obtained from sources we believe to be reliable. However, we cannot guarantee, warrant or represent its accuracy and all information is subject to error, change or withdrawal. An interested party and their advisors should conduct an independent investigation of the property to determine to your satisfaction the suitability of the property for your needs.

1111 HOWE AVE - BUILDING 100 & 200 2ND FLOOR

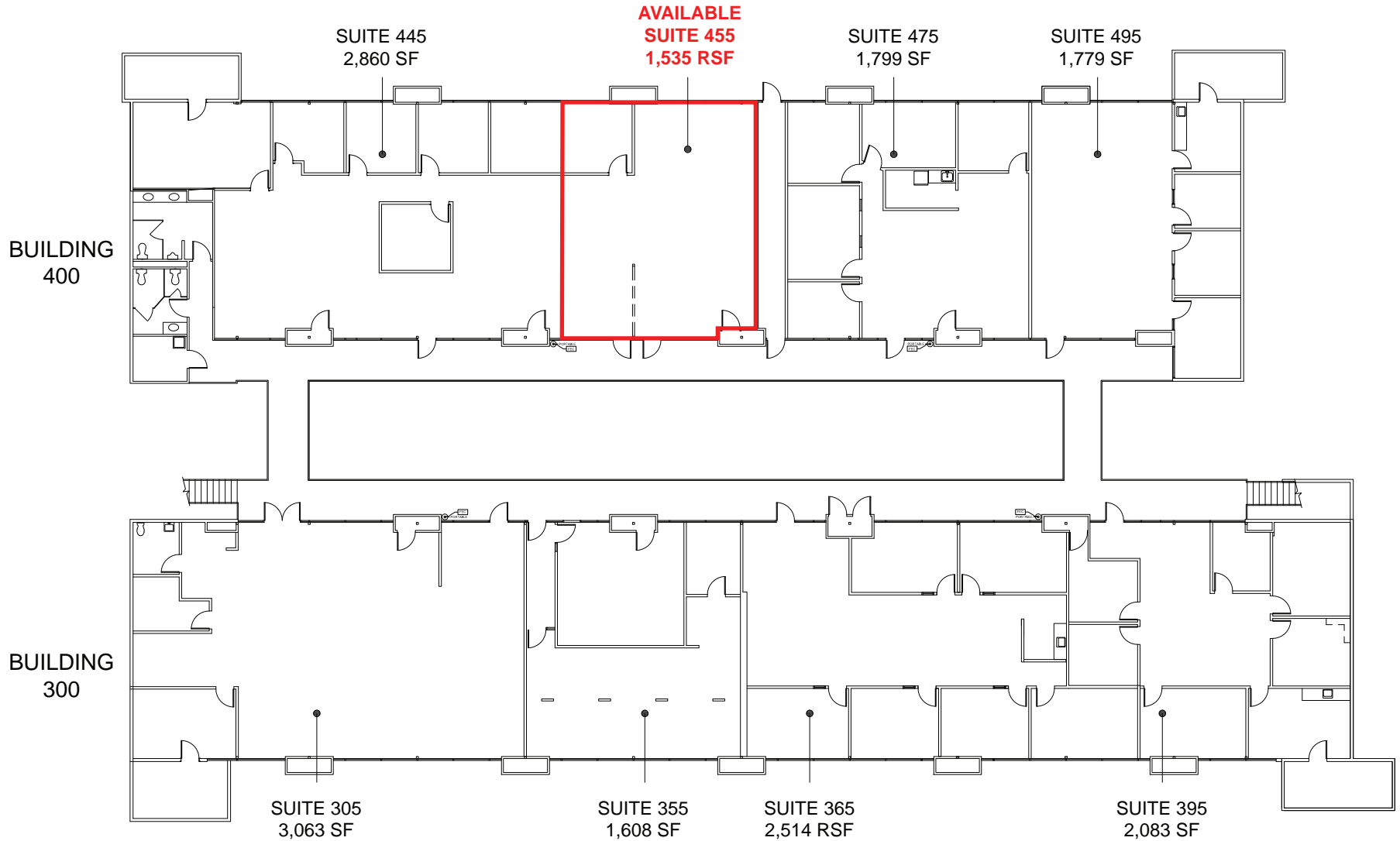


**Grant Keeney**  
DRE: #00891996  
grant@ethanconradprop.com

**Ethan Conrad**  
DRE: #01298662  
ethan@ethanconradprop.com

**ETHAN CONRAD PROPERTIES, INC.**  
1300 NATIONAL DRIVE, SUITE 100 | SACRAMENTO CA, 95834 | 916.779.1000  
www.ethanconradprop.com

1111 HOWE AVE - BUILDING 300 & 400 2ND FLOOR



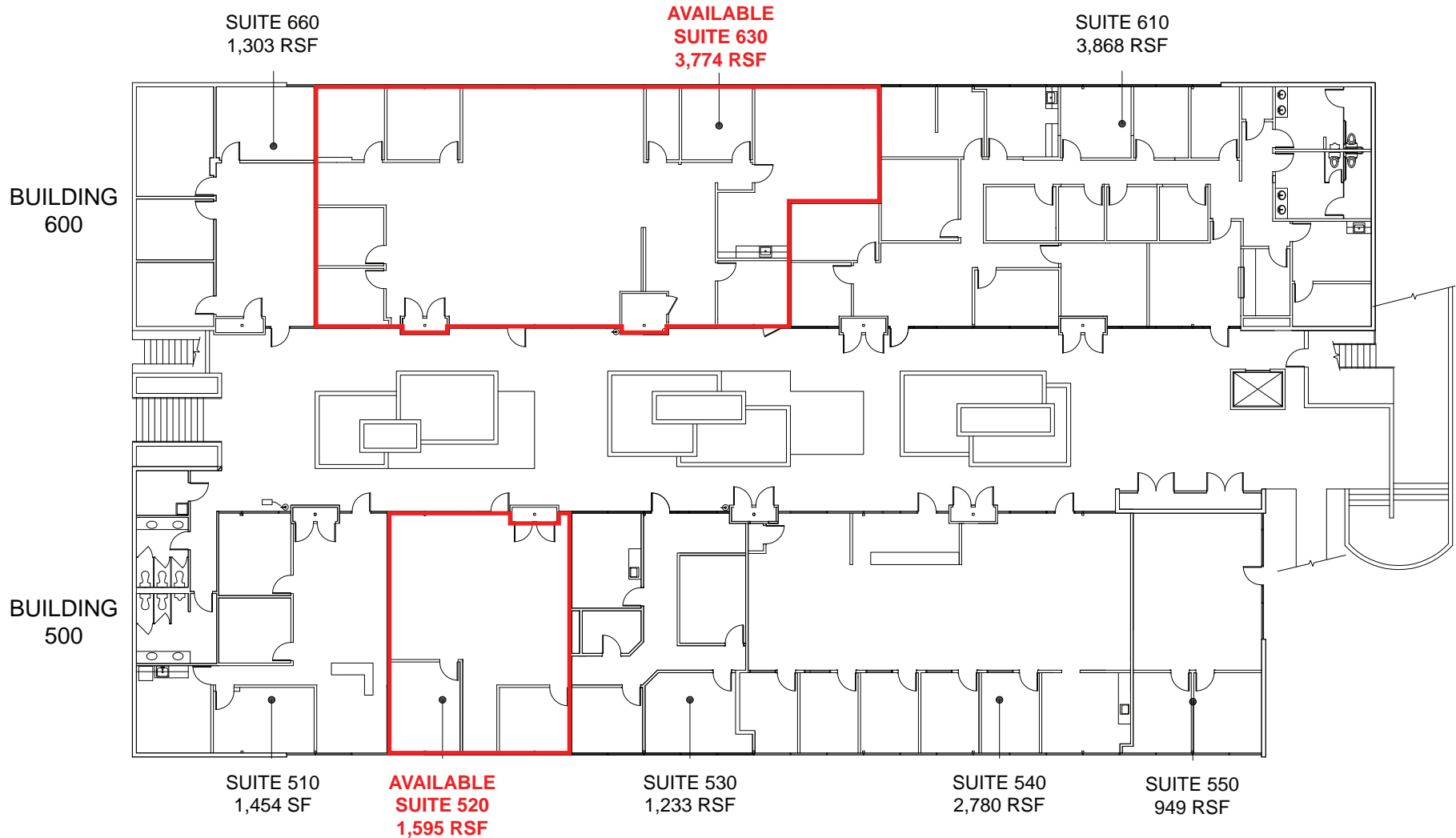
**Grant Keeney**  
DRE: #00891996  
grant@ethanconradprop.com

**Ethan Conrad**  
DRE: #01298662  
ethan@ethanconradprop.com

**ETHAN CONRAD PROPERTIES, INC.**  
1300 NATIONAL DRIVE, SUITE 100 | SACRAMENTO CA, 95834 | 916.779.1000  
www.ethanconradprop.com

The information contained herein has been obtained from sources we believe to be reliable. However, we cannot guarantee, warrant or represent its accuracy and all information is subject to error, change or withdrawal. An interested party and their advisors should conduct an independent investigation of the property to determine to your satisfaction the suitability of the property for your needs.

1111 HOWE AVE - BUILDING 500 & 600 1ST FLOOR



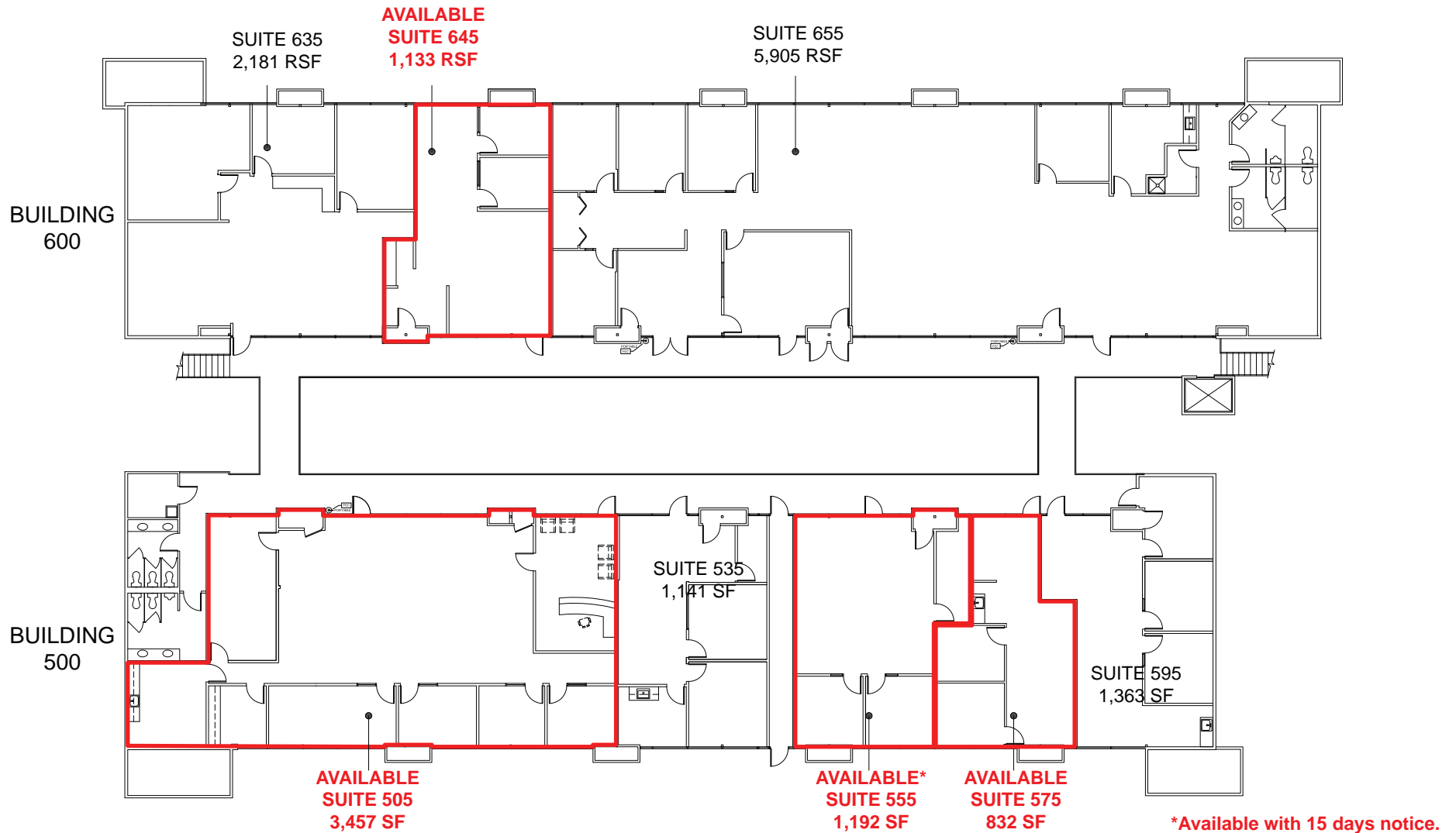
**Grant Keeney**  
DRE: #00891996  
grant@ethanconradprop.com

**Ethan Conrad**  
DRE: #01298662  
ethan@ethanconradprop.com

**ETHAN CONRAD PROPERTIES, INC.**  
1300 NATIONAL DRIVE, SUITE 100 | SACRAMENTO CA, 95834 | 916.779.1000  
www.ethanconradprop.com

The information contained herein has been obtained from sources we believe to be reliable. However, we cannot guarantee, warrant or represent its accuracy and all information is subject to error, change or withdrawal. An interested party and their advisors should conduct an independent investigation of the property to determine to your satisfaction the suitability of the property for your needs.

1111 HOWE AVE - BUILDING 500 & 600 2ND FLOOR



**Grant Keeney**  
DRE: #00891996  
grant@ethanconradprop.com

**Ethan Conrad**  
DRE: #01298662  
ethan@ethanconradprop.com

**ETHAN CONRAD PROPERTIES, INC.**  
1300 NATIONAL DRIVE, SUITE 100 | SACRAMENTO CA, 95834 | 916.779.1000  
www.ethanconradprop.com

The information contained herein has been obtained from sources we believe to be reliable. However, we cannot guarantee, warrant or represent its accuracy and all information is subject to error, change or withdrawal. An interested party and their advisors should conduct an independent investigation of the property to determine to your satisfaction the suitability of the property for your needs.





**Grant Keeney**  
DRE: #00891996  
grant@ethanconradprop.com

**Ethan Conrad**  
DRE: #01298662  
ethan@ethanconradprop.com

**ETHAN CONRAD PROPERTIES, INC.**  
1300 NATIONAL DRIVE, SUITE 100 | SACRAMENTO CA, 95834 | 916.779.1000  
www.ethanconradprop.com

The information contained herein has been obtained from sources we believe to be reliable. However, we cannot guarantee, warrant or represent its accuracy and all information is subject to error, change or withdrawal. An interested party and their advisors should conduct an independent investigation of the property to determine to your satisfaction the suitability of the property for your needs.