



46 WARREN
/ STREET

BETWEEN CHURCH STREET & WEST BROADWAY

Ground Level.....2,000 sf
Lower Level.....2,450 sf
Sub Lower Level.....1,000 sf
Ceilings...13' Ground, 11.5' LL
Term.....5-10 Years
Possession.....Immediate
Asking Rent.....Inquire

SPACE FEATURES

- 12' uninterrupted window display
- Massive skylight and windows in rear
- High ceilings throughout
- Interior elevator services all 3 levels with direct street access
- Original, tin ceilings
- Dry uses only

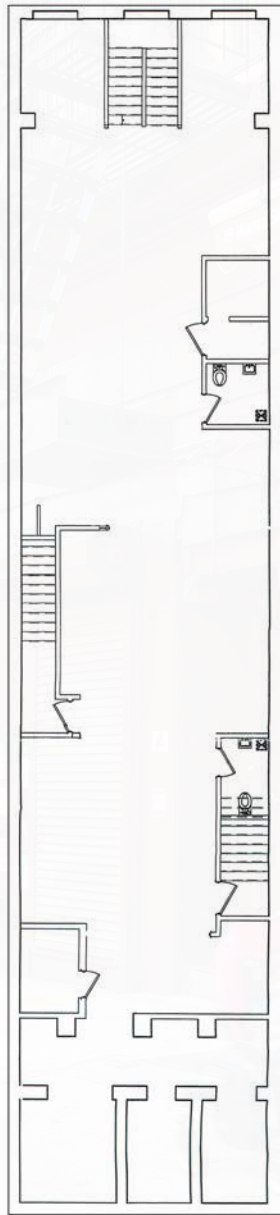
NEIGHBORS INCLUDE

- Babesta
- Rosie Pope Maternity & Baby
- The Mysterious Bookshop
- Le Pain Quotidien
- Whole Foods
- Barnes & Noble
- Warren 77
- Takahachi Bakery





Ground Level



Lower Level



Sub Lower Level

46 WARREN STREET

BETWEEN CHURCH STREET & WEST BROADWAY

For more information, please contact:

Christopher Owles
212.604.9002
chris@sinvin.com

Peter Weisman
646.673.8782
peter@sinvin.com