

FOR LEASE

# LAKESIDE BUSINESS PARK

1504

QUARRY DRIVE

Edgewood, MD 21040



## AVAILABLE SPACE FEATURES

- + 23,853± SF
- + 2,500± SF Office
- + 3 Loading Docks
- + 1 Drive-in Door
- + 24' Clear Ceiling
- + 40'w X 42'd Column Spacing
- + Wet Sprinkler System
- + Zoned G-I (General Industrial)
- + Enterprise Zone Tax Incentives
- + Easy Access to I-95 via Route 24



## CONTACT US

### JON CASELLA

First Vice President  
+1 410 244 3127  
jon.casella@cbre.com

### JUSTIN MOHLER

First Vice President  
+1 410 244 3116  
justin.mohler@cbre.com

### LUKE WILSON

Vice President  
+1 410 244 3126  
luke.wilson@cbre.com



### CBRE, INC.

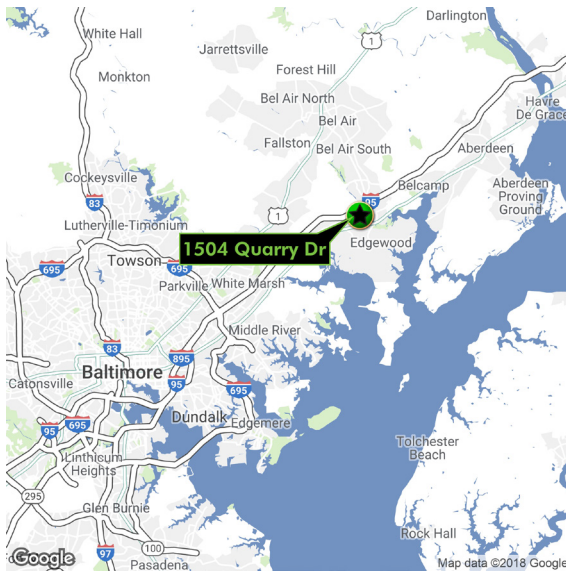
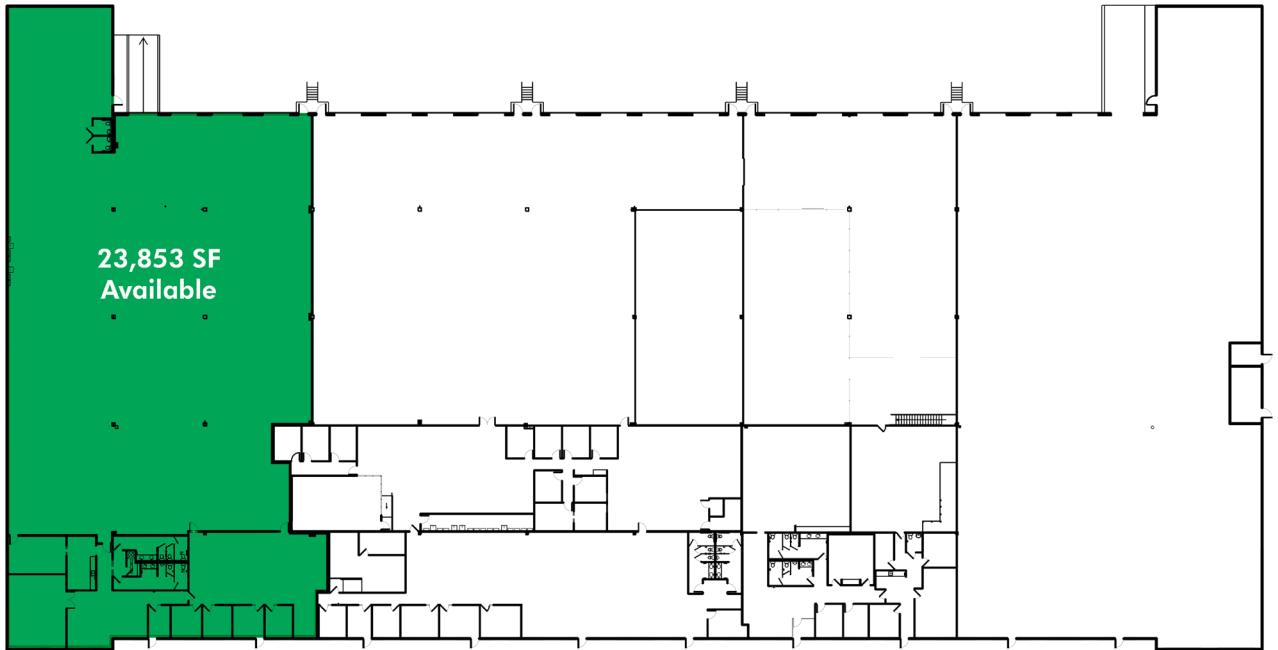
100 E Pratt St, Suite 1700  
Baltimore, MD 21202  
+1 410 244 7100

[www.cbre.com/baltimore](http://www.cbre.com/baltimore)

**CBRE**

# FOR LEASE WAREHOUSE SPACE

**1504**  
**QUARRY DRIVE**  
Edgewood, MD 21040



## TRAVEL DISTANCES

US Route 40 .....	1.7 miles
I-95 .....	2 miles
US Route 1 .....	7 miles
I-695 .....	14 miles
I-895 .....	16.6 miles
Port of Baltimore.....	22.8 miles
BWI Airport.....	31.9 miles

© 2019 CBRE, Inc. The information contained in this document has been obtained from sources believed reliable. While CBRE, Inc. does not doubt its accuracy, CBRE, Inc. has not verified it and makes no guarantee, warranty or representation about it. It is your responsibility to independently confirm its accuracy and completeness. Any projections, opinions, assumptions or estimates used are for example only and do not represent the current or future performance of the property. The value of this transaction to you depends on tax and other factors which should be evaluated by your tax, financial and legal advisors. You and your advisors should conduct a careful, independent investigation of the property to determine to your satisfaction the suitability of the property for your needs.

Photos herein are the property of their respective owners and use of these images without the express written consent of the owner is prohibited.

[www.cbre.com/baltimore](http://www.cbre.com/baltimore)

**CBRE**