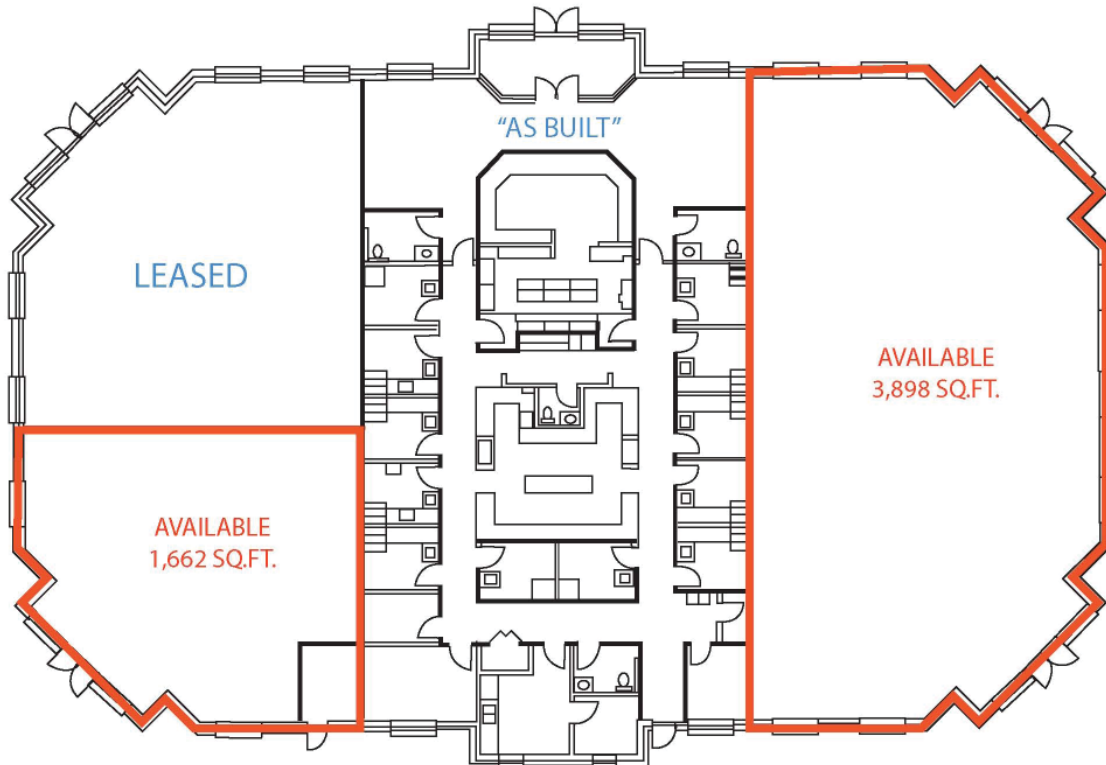


# MEDICAL/PROFESSIONAL OFFICE SPACE

Grassfield Area / Cahoon Commons  
502 Bud Drive  
Chesapeake, Virginia



**Children's Hospital of The King's Daughters Anchored Building  
Outparcel to Super Wal-Mart, Grassfield High School, Dominion Commerce Park**

**Excellent signage & visibility with Dominion Boulevard frontage.**

**Minutes from Great Bridge & Deep Creek Market Areas**

**Immediate Occupancy**

**Lease rate for Medical Office: \$21.00 psf net of utilities & interior janitorial**

**Lease rate for General Office: \$18.00 psf net of utilities & interior janitorial**

**CONTACT:** \_\_\_\_\_

**PETER ABRAHAM, CCIM**

**(757) 640-8226**

**peterabraham@harveylindsay.com**

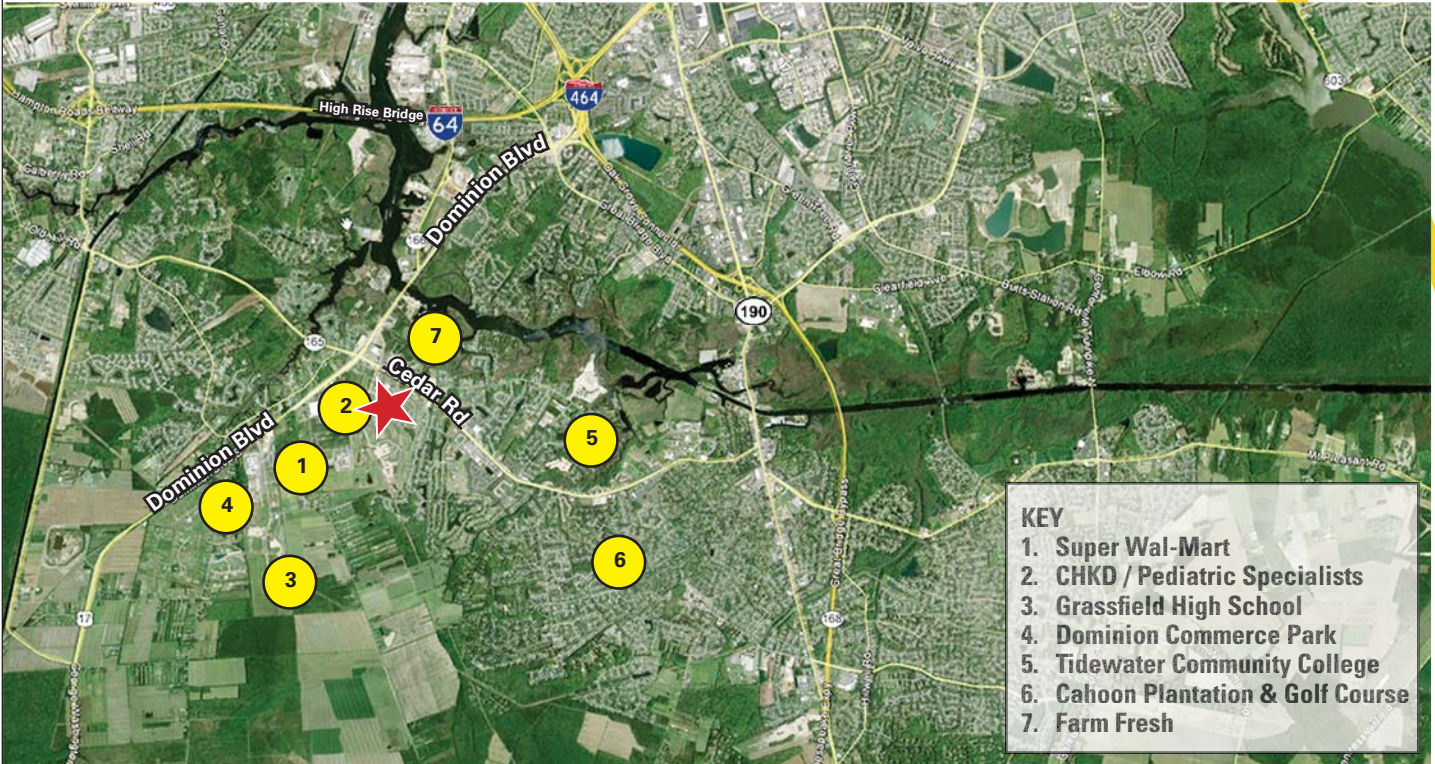
**HARVEY LINDSAY**

COMMERCIAL REAL ESTATE

*A Tradition of Forward Thinking*

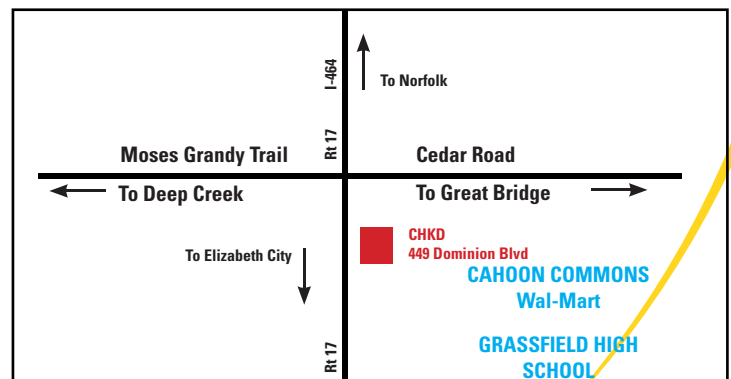
# MEDICAL/PROFESSIONAL OFFICE SPACE

Grassfield Area / Cahoon Commons  
502 Bud Drive  
Chesapeake, Virginia



- KEY**
- 1. Super Wal-Mart
  - 2. CHKD / Pediatric Specialists
  - 3. Grassfield High School
  - 4. Dominion Commerce Park
  - 5. Tidewater Community College
  - 6. Cahoon Plantation & Golf Course
  - 7. Farm Fresh

- 1,662 - 3,898 SF Available
- Next to Super Wal-Mart, Grassfield High School, & Dominion Commerce Park
- NOW AVAILABLE



CONTACT:

**PETER ABRAHAM, CCIM**  
(757) 640-8226  
peterabraham@harveylindsay.com

**HARVEY LINDSAY**  
COMMERCIAL REAL ESTATE  
*A Tradition of Forward Thinking*