

FOR LEASE LOMAS SANTA FE MEDICAL CENTER

530 Lomas Santa Fe Drive
Solana Beach, CA 92075

CBRE

CUSHMAN &
WAKEFIELD



PROPERTY HIGHLIGHTS

- Lease Rate: \$3.25/SF NNN
- Two-building, 31,390 SF Medical/Office project offering a rare opportunity to lease medical space in coastal Solana Beach with Lomas Santa Fe address and frontage
- Prime location near the entrance to the Cedros Design District
- Abundance of restaurant & retail amenities within walking distance
- Closest medical office building to the Solana Beach Coaster & AmTrak Station
- Easy access to I-5 and Hwy 101
- Partial ocean views

MICHAEL MAHONEY
+1 760 685 2915
michael.mahoney3@cbre.com
LIC #01392972

PETER CURRY
+1 760 431 4238
peter.curry@cushwake.com
LIC #01241186

12830 El Camino Real
Suite 100
San Diego, CA 92130
Tel +1 858 452 6500
cushmanwakefield.com

FOR LEASE LOMAS SANTA FE MEDICAL CENTER

530 Lomas Santa Fe Drive
Solana Beach, CA 92075

CBRE

CUSHMAN &
WAKEFIELD

AVAILABILITY

Building	Suite	Square Feet	Price	Available	Notes
East	1	2,218 RSF	\$3.25/SF NNN	Now	Efficient ground floor medical office space with reception, administrative areas, patient rooms, storage, break room and restrooms
East	4	1,402 RSF	\$3.25/SF NNN	Now	Ground floor medical office space
East	6	1,691 RSF	\$3.25/SF NNN	Now	Former massage therapy medical office. Extensive plumbing infrastructure throughout and efficient floor plan.
West	B1	692 RSF	\$3.25/SF NNN	Now	Ground floor medical office space
West	B2 CLICK HERE Virtual Tour	1,311 RSF	\$3.25/SF NNN	Now	Efficient ground floor medical office space featuring a reception area, 4 patient rooms, administrative areas and restrooms
West	B1/B2	2,003 RSF	\$3.25/SF NNN	Now	Contiguous option. Contact listing broker for conceptual plan.
West	O	2,028 RSF	\$3.25/SF NNN	Now	Efficient medical office space featuring a reception area, 5/6 patient rooms, administrative areas and restrooms



FOR LEASE LOMAS SANTA FE MEDICAL CENTER

530 Lomas Santa Fe Drive
Solana Beach, CA 92075

CBRE

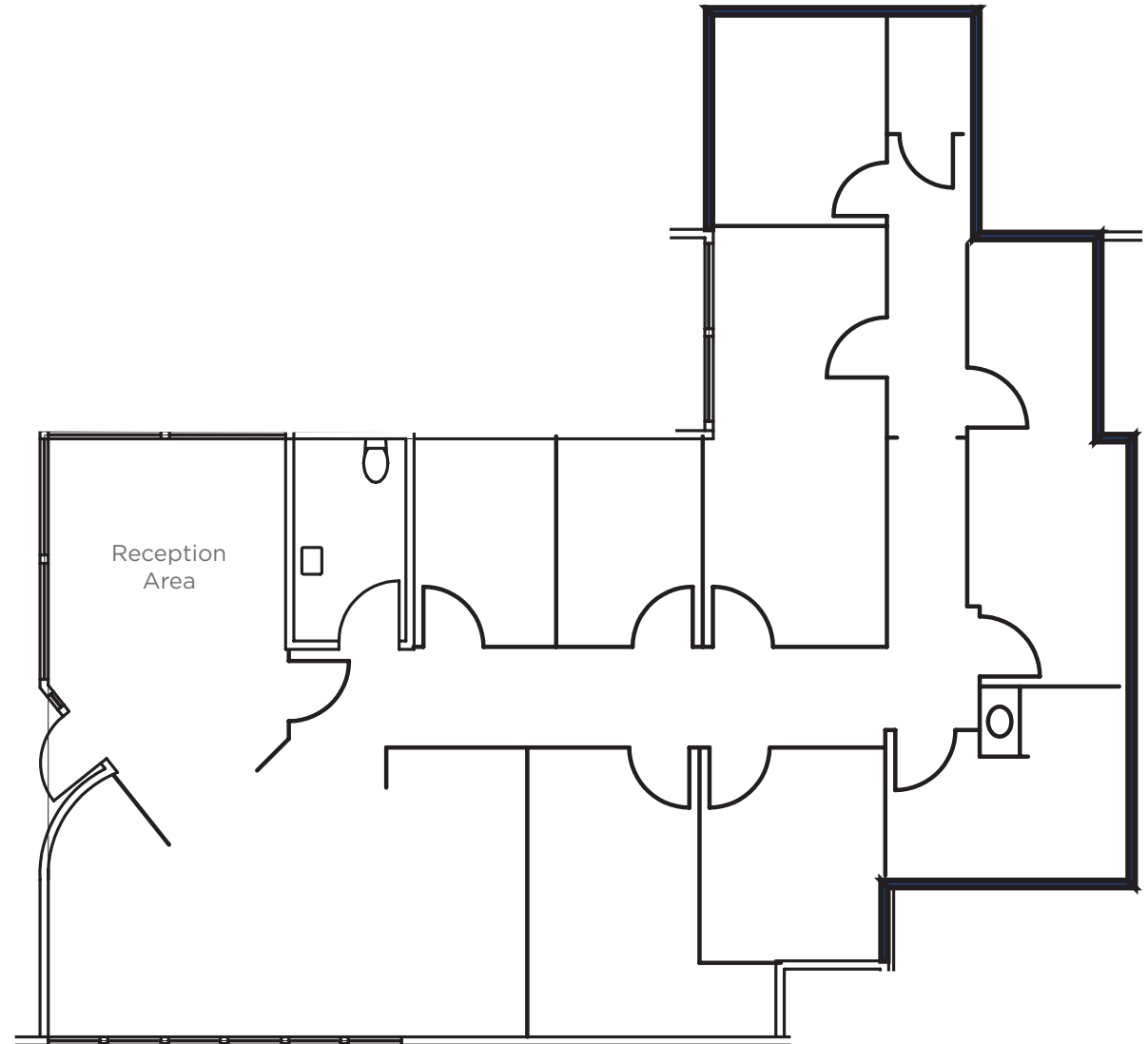
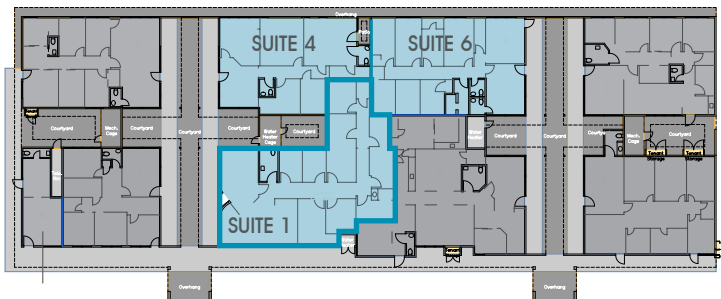
CUSHMAN &
WAKEFIELD

SUITE 1

- 2,218 RSF
- \$3.25/SF NNN
- Efficient ground floor medical office space featuring a combination of administrative offices, patient rooms, restroom, storage and break room
- Contiguous with Suites 4 & 6 for up to 5,311 RSF

FIRST FLOOR EAST BUILDING

LOMAS SANTA FE



FOR LEASE LOMAS SANTA FE MEDICAL CENTER

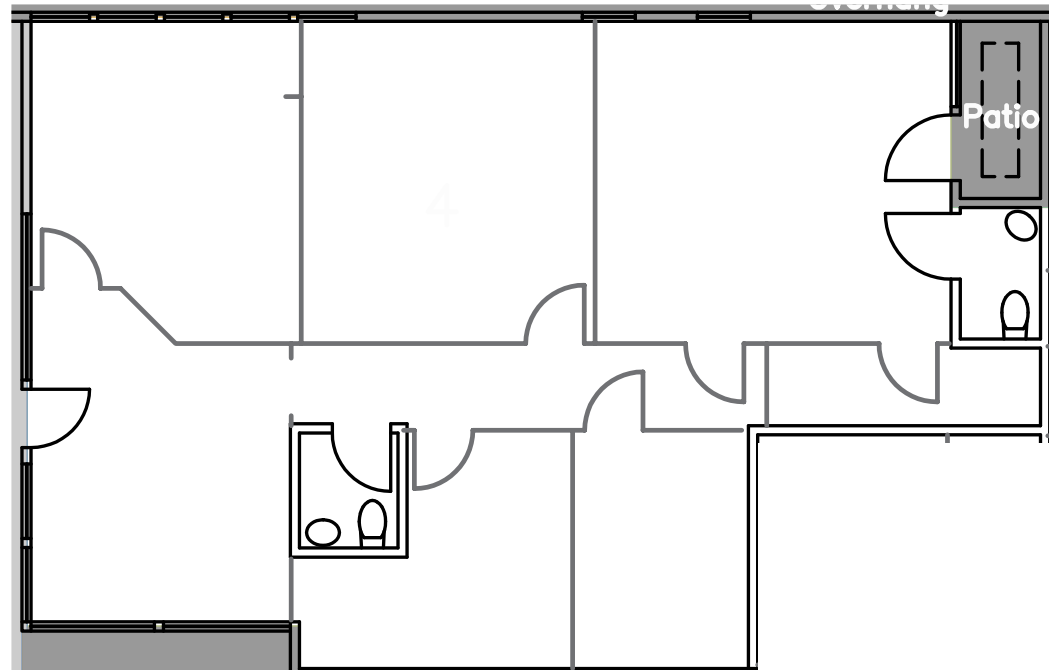
530 Lomas Santa Fe Drive
Solana Beach, CA 92075

CBRE

CUSHMAN &
WAKEFIELD

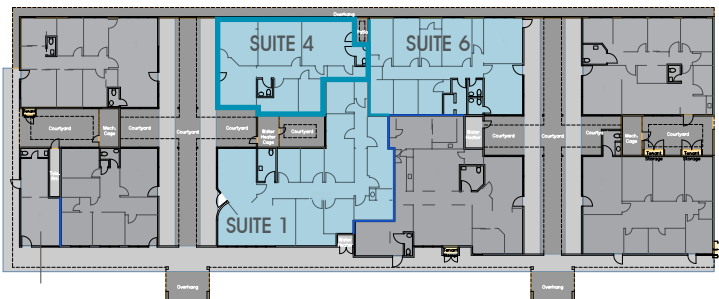
SUITE 4

- 1,402 RSF
- \$3.25/SF NNN
- Ground floor medical office space
- Contiguous with Suites 1 & 6 for up to 5,311 RSF



FIRST FLOOR EAST BUILDING

LOMAS SANTA FE



FOR LEASE LOMAS SANTA FE MEDICAL CENTER

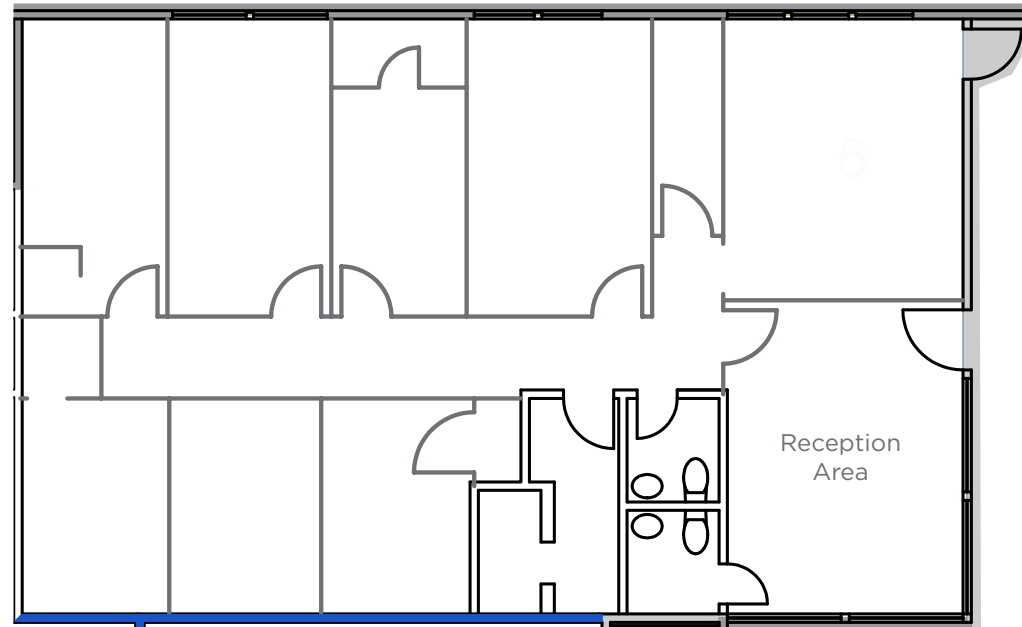
530 Lomas Santa Fe Drive
Solana Beach, CA 92075

CBRE

CUSHMAN &
WAKEFIELD

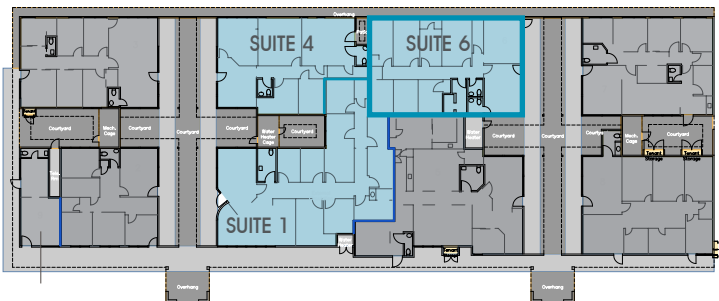
SUITE 6

- 1,691 RSF
- \$3.25/SF NNN
- Former massage therapy medical office
- Extensive plumbing infrastructure throughout and efficient floor plan
- Contiguous with Suites 1 & 4 for up to 5,311 RSF



FIRST FLOOR EAST BUILDING

LOMAS SANTA FE



FOR LEASE LOMAS SANTA FE MEDICAL CENTER

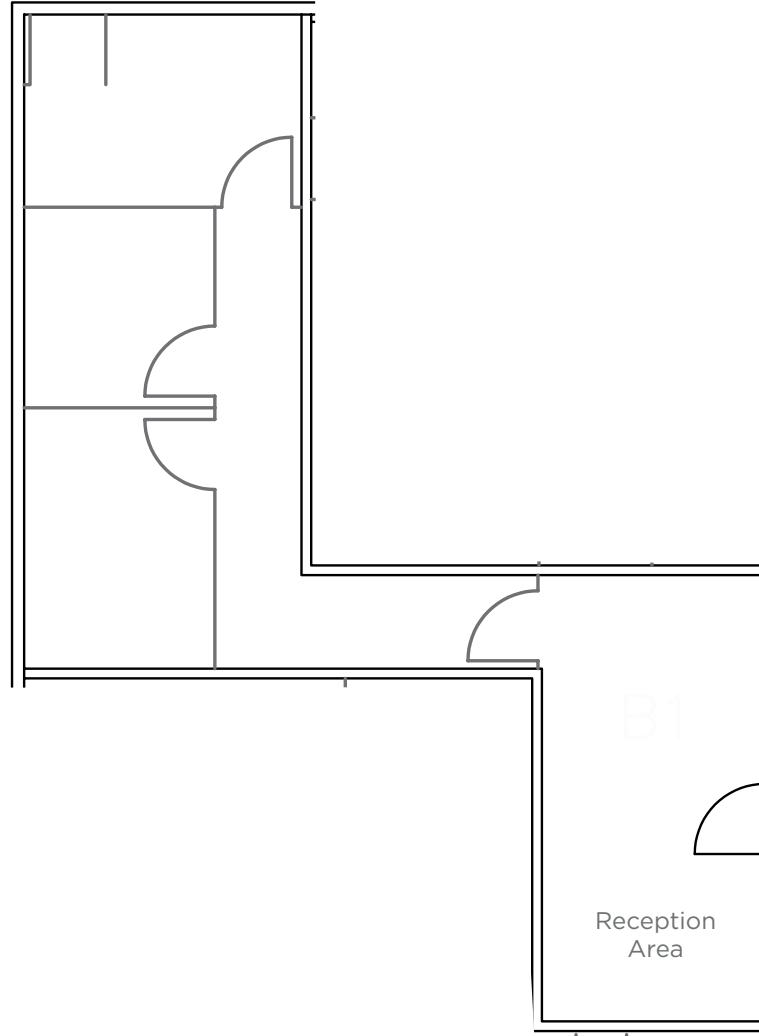
530 Lomas Santa Fe Drive
Solana Beach, CA 92075

CBRE

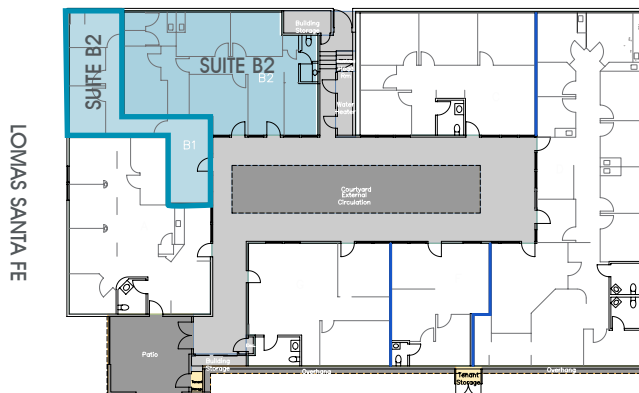
CUSHMAN &
WAKEFIELD

SUITE B1

- 692 RSF
- \$3.25/SF NNN
- Ground floor medical office space
- Contiguous with Suite B2 for 2,003 RSF



FIRST FLOOR WEST BUILDING



FOR LEASE LOMAS SANTA FE MEDICAL CENTER

530 Lomas Santa Fe Drive
Solana Beach, CA 92075

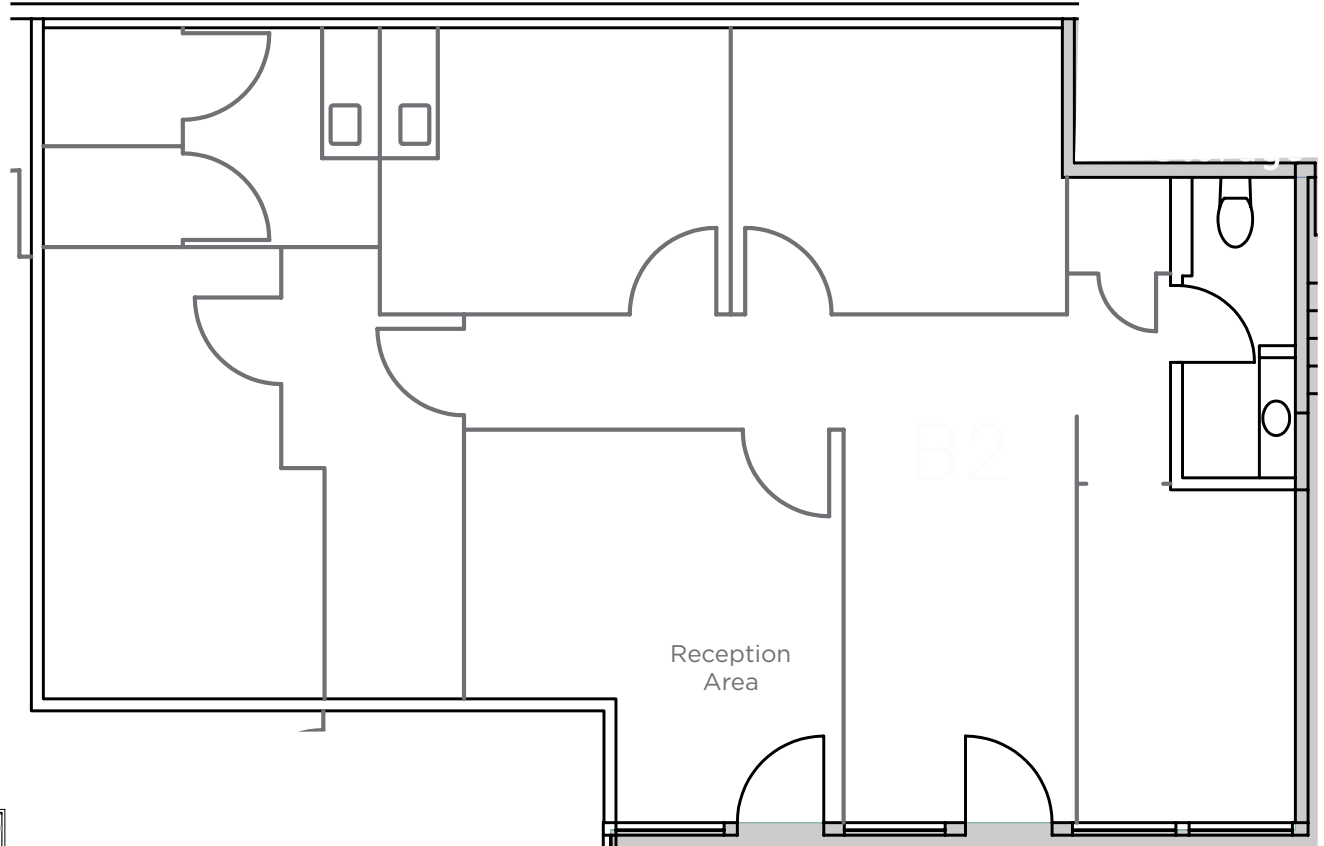
CBRE

CUSHMAN &
WAKEFIELD

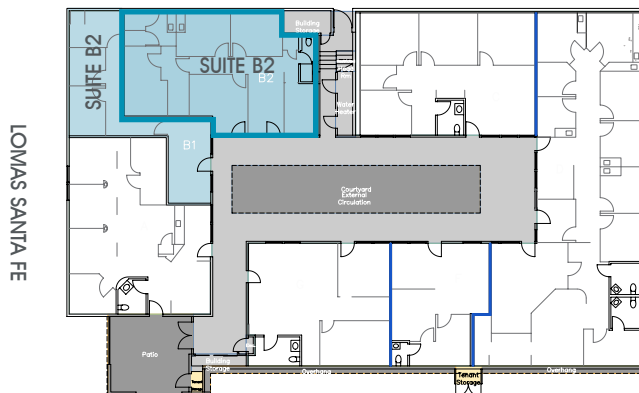
SUITE B2

- 1,311 RSF
- \$3.25/SF NNN
- Efficient ground floor medical office space featuring a reception area, 4 patient rooms, administrative areas and restrooms
- Contiguous with Suite B1 for 2,003 RSF

[CLICK HERE
for
Virtual Tour](#)



FIRST FLOOR WEST BUILDING



FOR LEASE LOMAS SANTA FE MEDICAL CENTER

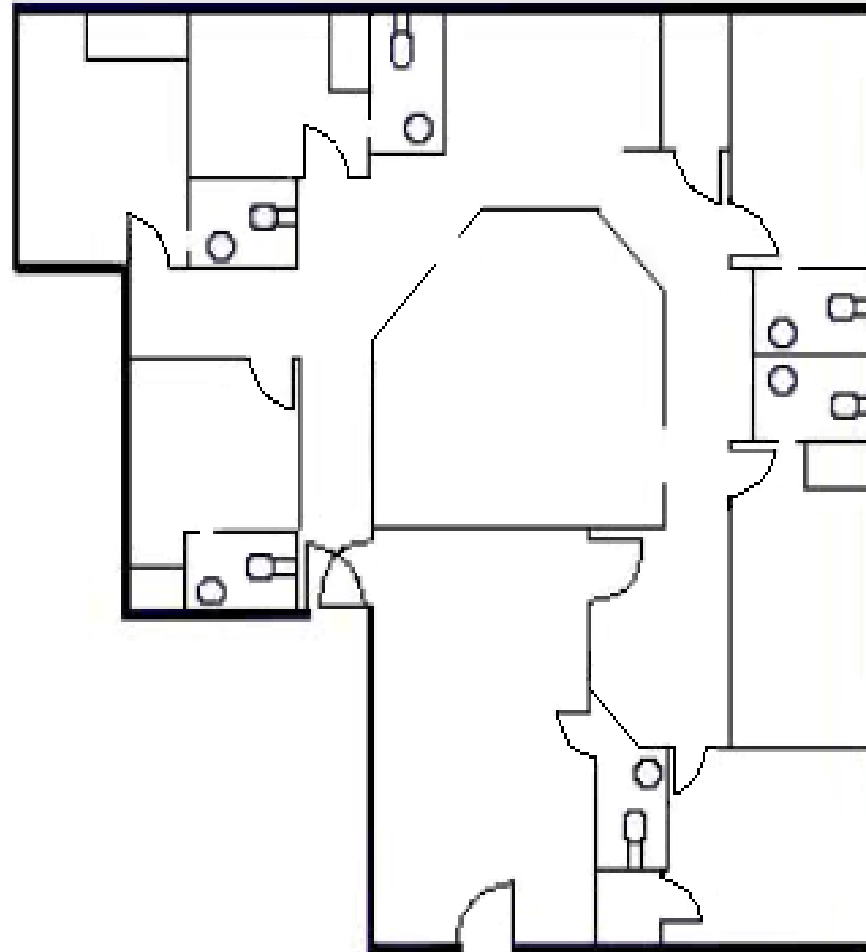
530 Lomas Santa Fe Drive
Solana Beach, CA 92075

CBRE

CUSHMAN &
WAKEFIELD

SUITE O

- 2,028 RSF
- \$3.25/SF NNN
- Efficient medical office space featuring a reception area, 5/6 patient rooms, administrative areas and restrooms



SECOND FLOOR WEST BUILDING

