


# 20 West Jackson Street

Phoenix, AZ 85003

**FOR SALE**



Originally a train depot built in 1946, 20 West Jackson is a ±21,000 SF adaptive reuse warehouse-style office with an expansive, open floorplan including a private patio, dramatic, high ceilings, poured-in-place concrete, and abundant natural light.

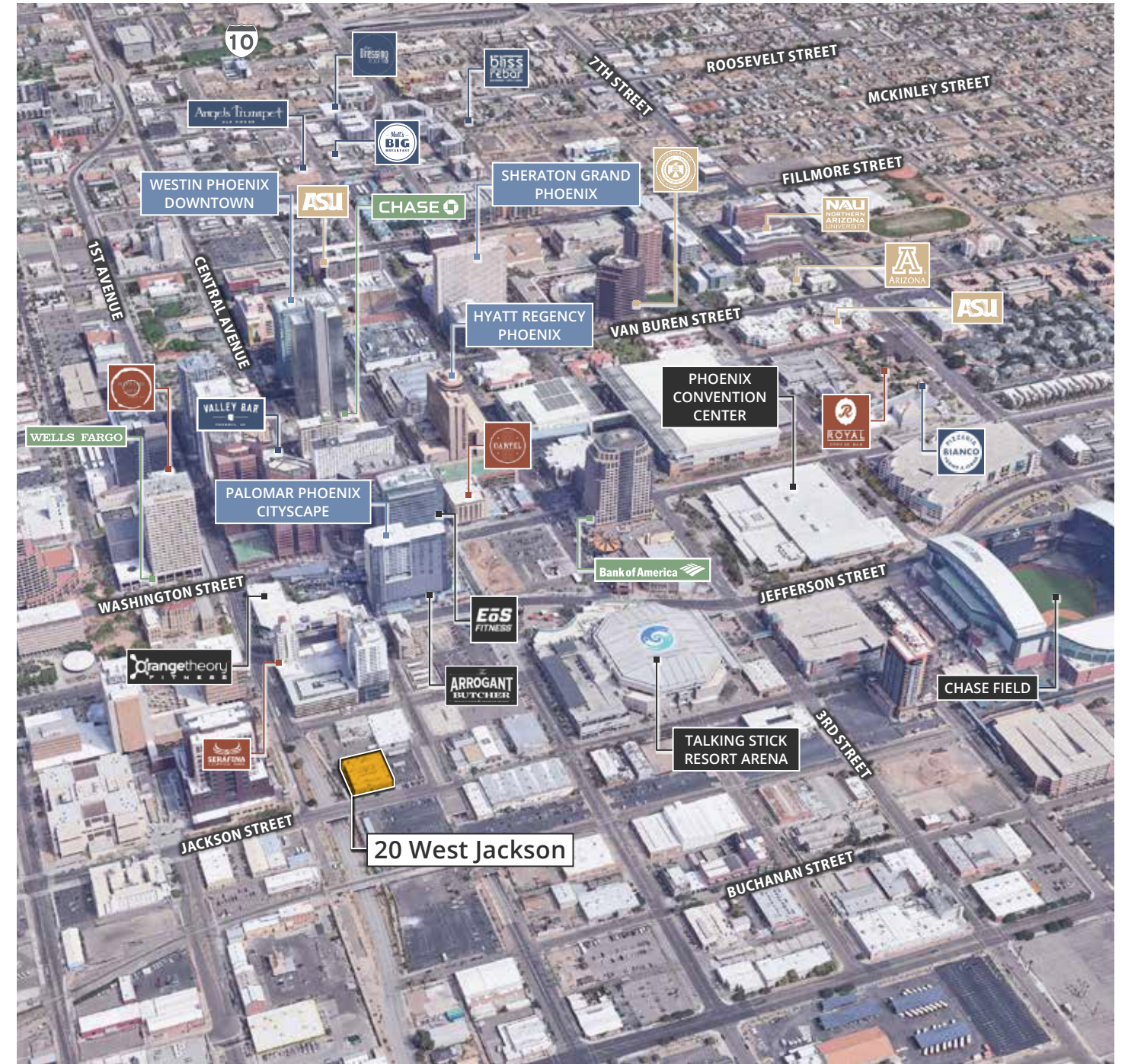
**BUILDING SPECS:**  
±21,000 SF  
\$4,500,000  
21' Ceiling Height  
Walker's Paradise  
- Score of 93

1st Floor: ±17,000 SF

Mezzanine: ±4,000 SF - Expandable to ±8,000 SF

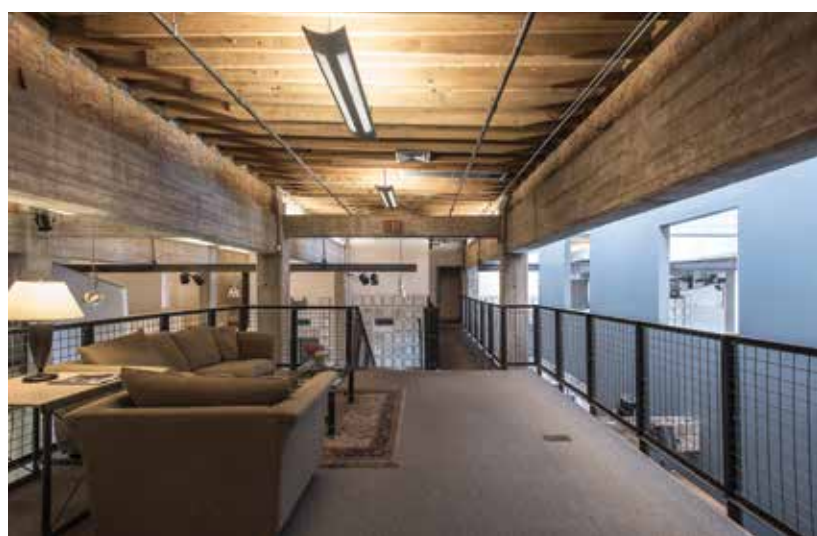
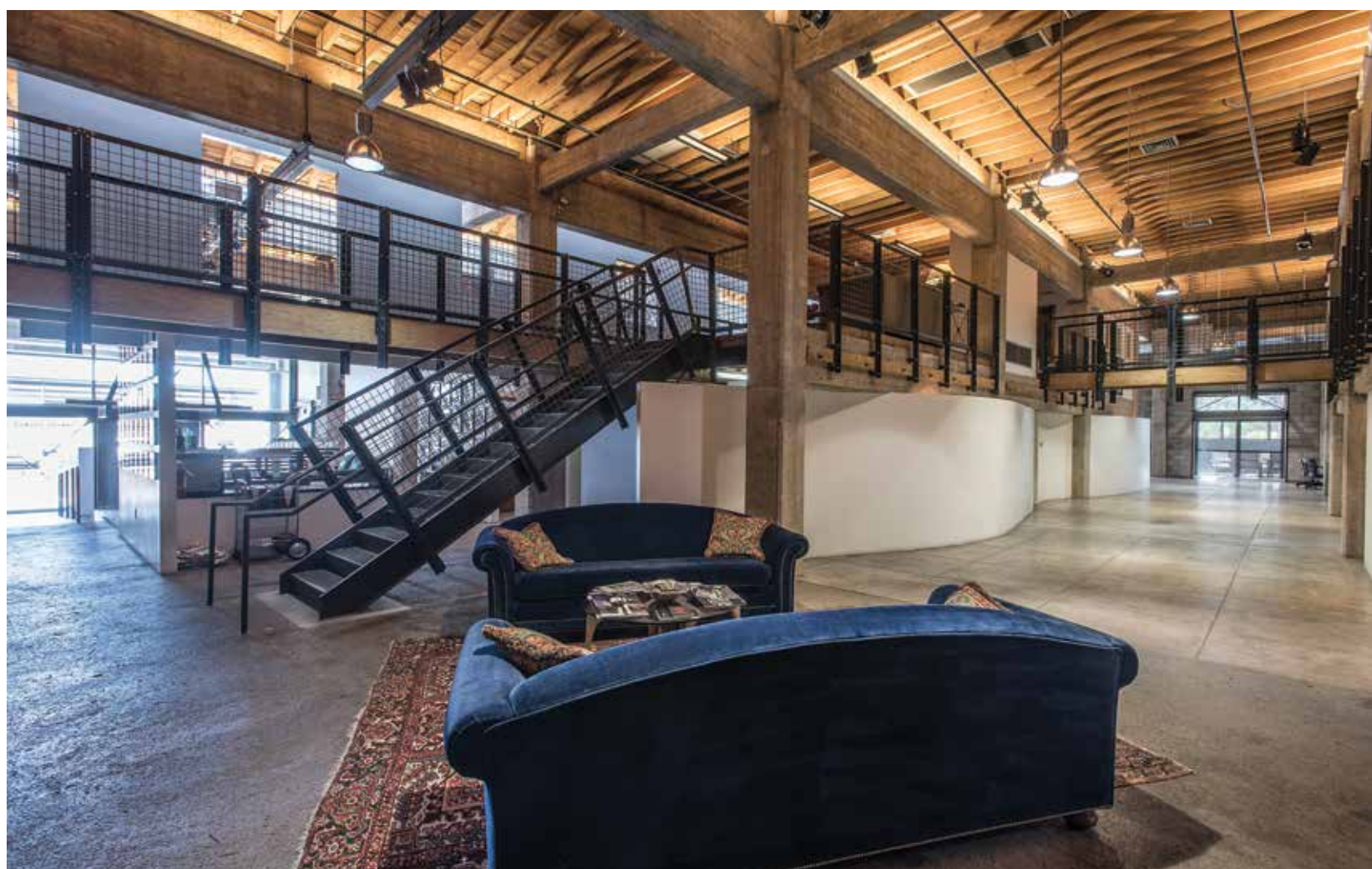


Fully Landscaped Outdoor Seating Area



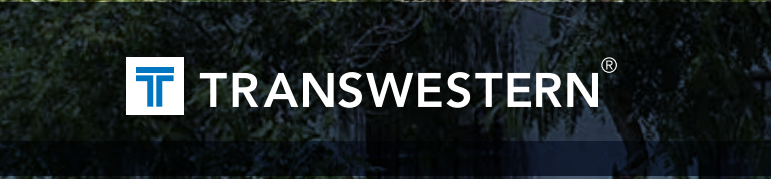
Amenities Within a 1-mile Radius







175



**TRANSWESTERN**<sup>®</sup>

**Mark Stratz**  
Senior Vice President  
602.386.1186  
mark.stratz@transwestern.com

**Scott Baumgarten**  
Senior Vice President  
602.386.1187  
scott.baumgarten@transwestern.com

2415 East Camelback Road, Suite 900  
Phoenix, Arizona 85016  
T 602.956.5000 F 602.956.5333  
www.transwestern.com

The information provided herein was obtained from sources believed reliable; however, Transwestern makes no guarantees, warranties or representations as to the completeness or accuracy thereof. The presentation of this property is submitted subject to errors, omissions, change of price or conditions, prior to sale or lease, or withdrawal without notice. Copyright © 2019 Transwestern. 0219.