

**LAND FOR SALE**

**+/- 0.75 Acres**

**PROPERTY FEATURES**

- Rare St. Matthews infill opportunity
- Highly visible land site with great Shelbyville Road frontage (only 1/2 mile from I-264)
- Located on the most dominant retail corridor in Louisville's east end - 1/4 mile from Shelbyville Road Plaza, 1/2 mile from Mall St. Matthews and 1 mile from Oxmoor Center
- Traffic counts in excess of 44,000
- Excellent area demographics
- Zoned C-2

DEMOGRAPHICS	POPULATION	AVERAGE HOUSEHOLD INCOME
3 MILE RADIUS	12,466	\$87,298
5 MILE RADIUS	88,293	\$113,085
7 MILE RADIUS	237,781	\$106,527

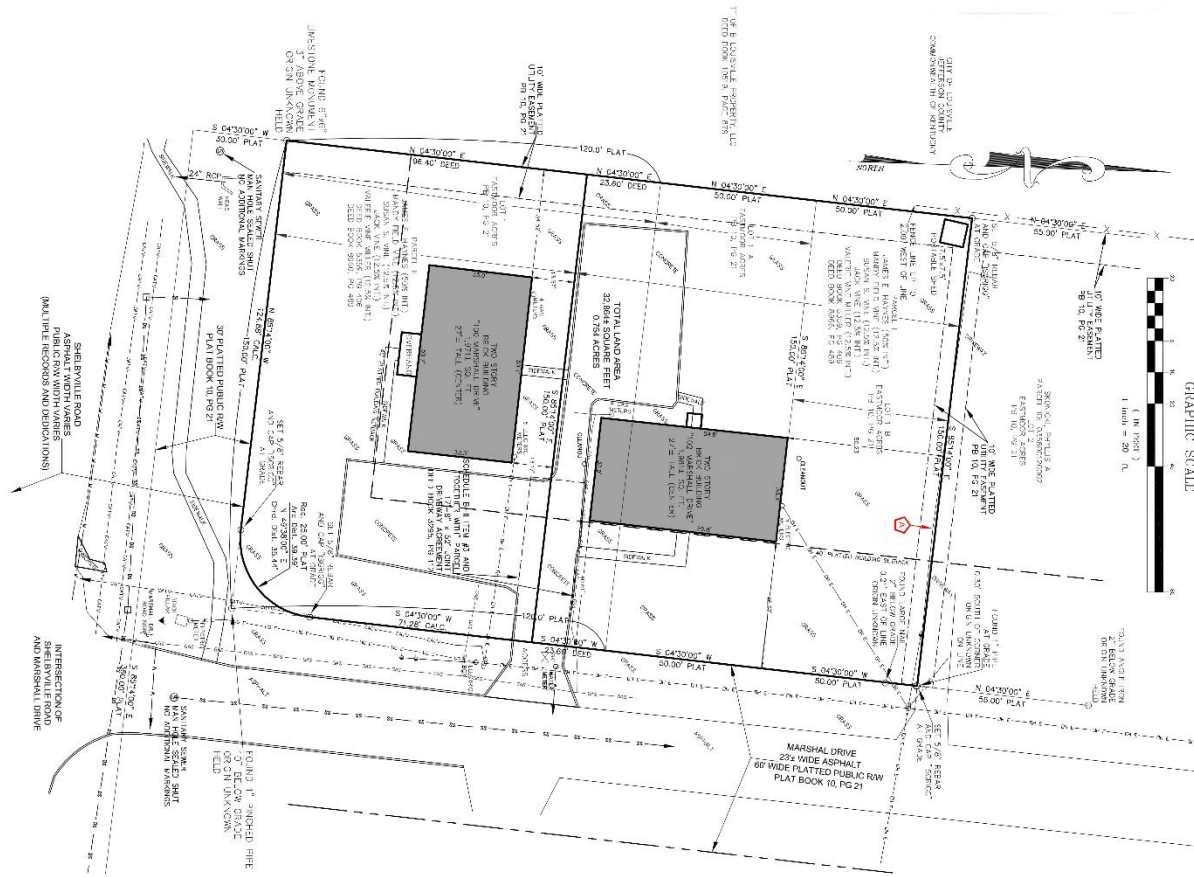


For more information, please contact:

**CRAIG COLLINS**  
Senior Director  
+1 502 589 5150 ext. 221  
ccollins@commercialkentucky.com

333 E. Main Street, Suite 510  
Louisville, KY 40202  
phone: +1 502 589 5150  
www.commercialkentucky.com

**FOR SALE**  
**100 & 102 MARSHALL DRIVE**  
Louisville, KY 40207



**Survey**

For more information, please contact:

**CRAIG COLLINS**  
Senior Director  
+1 502 589 5150 ext. 221  
ccollins@commercialkentucky.com

333 E. Main Street, Suite 510  
Louisville, KY 40202  
phone: +1 502 589 5150  
www.commercialkentucky.com