

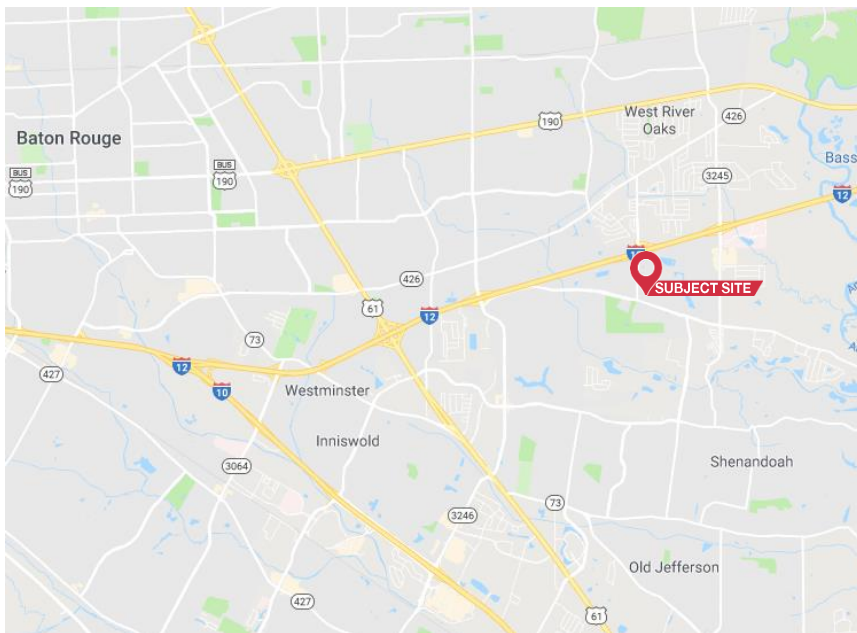
# For Sale/Lease

14635 S Harrells Ferry Rd, Baton Rouge, LA

# NAI Latter & Blum



OFFICE SPACE AVAILABLE – **14635 S Harrells Ferry Rd, Suite 3-A**



- 2,332 SF office condo
- Built in cabinets, desks, bookcases, and extra plumbing from former orthopedic clinic
- Excellent for CPA, Attorney, Insurance, Medical, etc.
- Max visibility – end unit
- I-12 & Millerville easy access

**For Sale: \$290,000**  
**For Lease: \$2,800/mo**

1700 City Farm Drive,  
Baton Rouge, LA 70806 USA  
225.295.0800  
[www.latterblum.com](http://www.latterblum.com)

**Clay Johnston, J.D., CCIM**  
225.229.1495 • [cjohnstonlatterblum.com](mailto:cjohnstonlatterblum.com)

**Bobby Smith, CCIM**  
225.413.1195 • [bobsmith@latterblum.com](mailto:bobsmith@latterblum.com)

# For Sale/Lease

14635 S Harrells Ferry Rd, Baton Rouge, LA

# NAI Latter & Blum

## Additional Photos



1700 City Farm Drive,  
Baton Rouge, LA 70806 USA  
225.295.0800  
[www.latterblum.com](http://www.latterblum.com)

**Clay Johnston, J.D., CCIM**  
225.229.1495 • [cjohnstonlatterblum.com](http://cjohnstonlatterblum.com)

**Bobby Smith, CCIM**  
225.413.1195 • [bobsmith@latterblum.com](mailto:bobsmith@latterblum.com)

# For Sale/Lease

14635 S Harrells Ferry Rd, Baton Rouge, LA

# NAI Latter & Blum

## Additional Photos



1700 City Farm Drive,  
Baton Rouge, LA 70806 USA  
225.295.0800  
[www.latterblum.com](http://www.latterblum.com)

**Clay Johnston, J.D., CCIM**  
225.229.1495 • [cjohnstonlatterblum.com](http://cjohnstonlatterblum.com)

**Bobby Smith, CCIM**  
225.413.1195 • [bobsmith@latterblum.com](mailto:bobsmith@latterblum.com)

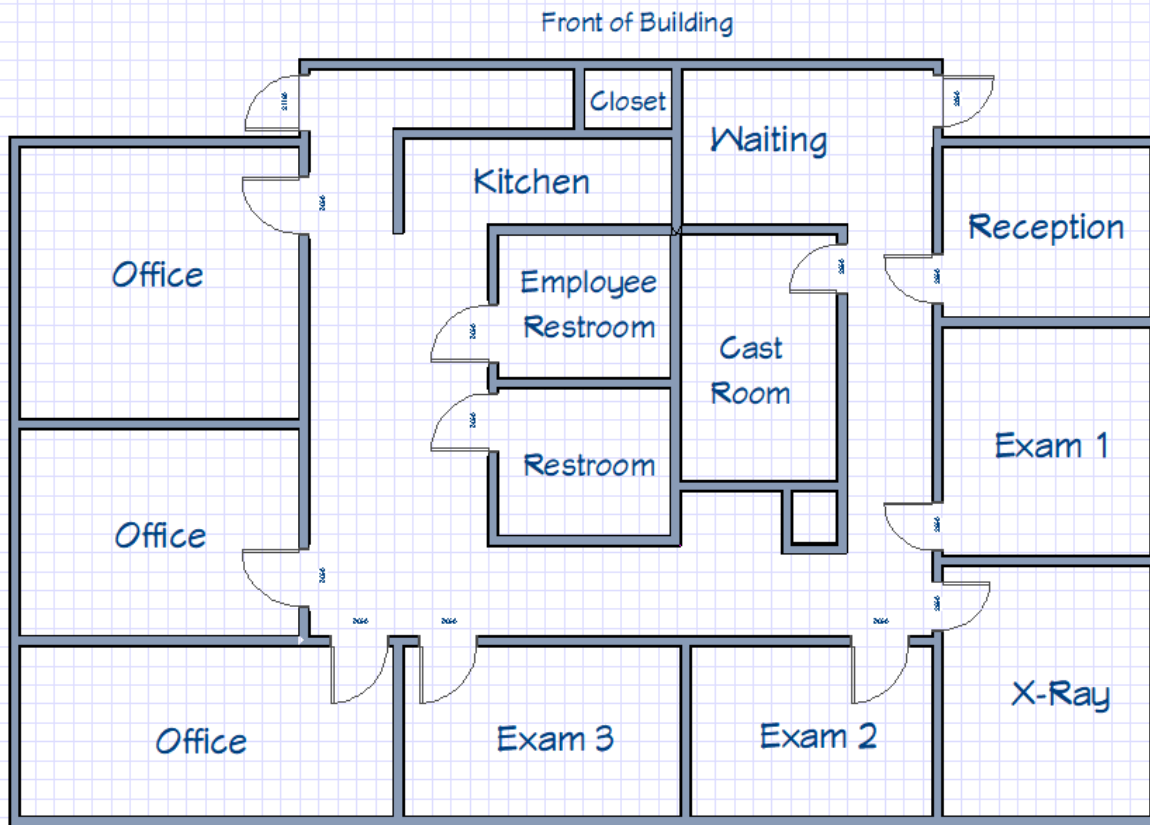
# For Sale/Lease

14635 S Harrells Ferry Rd, Baton Rouge, LA

# NAI Latter & Blum

## Additional Information

### 14635 S. Harrell's Ferry Rd, Suite #3-A



1700 City Farm Drive,  
Baton Rouge, LA 70806 USA  
225.295.0800  
[www.latterblum.com](http://www.latterblum.com)

**Clay Johnston, J.D., CCIM**  
225.229.1495 • [cjohnstonlatterblum.com](mailto:cjohnstonlatterblum.com)

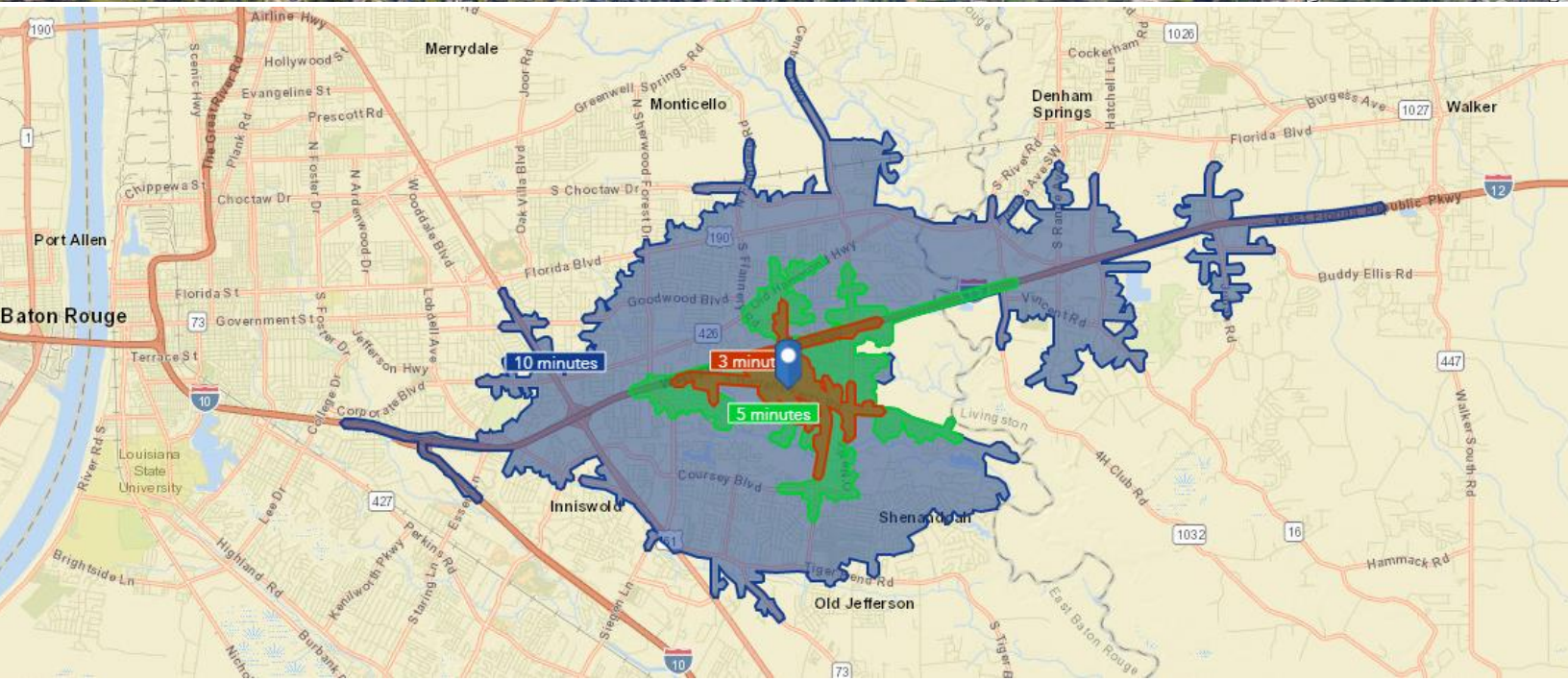
**Bobby Smith, CCIM**  
225.413.1195 • [bobsmith@latterblum.com](mailto:bobsmith@latterblum.com)

# For Sale/Lease

14635 S Harrells Ferry Rd, Baton Rouge, LA

# NAI Latter & Blum

## Additional Information



1700 City Farm Drive,  
Baton Rouge, LA 70806 USA  
225.295.0800  
[www.latterblum.com](http://www.latterblum.com)

**Clay Johnston, J.D., CCIM**  
225.229.1495 • [cjohnstonlatterblum.com](http://cjohnstonlatterblum.com)

**Bobby Smith, CCIM**  
225.413.1195 • [bobsmith@latterblum.com](mailto:bobsmith@latterblum.com)