

**SPACE  
FOR LEASE**

7,580 SF

OFFICE SPACE

DOWNTOWN  
CHATHAM  
LOCATION



**TRANSWESTERN**

REAL ESTATE  
SERVICES

# 39 MAIN STREET

Chatham, NJ



## Availability:

- First Floor: 6,000 SF
- Lower Level: 1,580 SF  
(1,140 SF finished space)
- Parking: 4.50 / 1,000 SF
- Rent: Contact Broker for pricing

## Location Features:

- Walking distance to restaurants and retail shopping in Downtown Chatham
- Located in close proximity to Routes NJ-24, I-78, I-287, I-80 and Garden State Parkway
- 25 minutes to Newark Liberty International Airport



## Leasing Information:

**Douglas Rowe**  
973.947.9202  
Douglas.Rowe@transwestern.com

**Ryan Prince**  
973.947.9207  
Ryan.Prince@transwestern.com

The information provided herein was obtained from sources believed reliable; however, Transwestern makes no guarantees, warranties or representations as to the completeness of accuracy thereof. The presentation of this property is submitted subject to errors, omissions, change of price or conditions, prior to sale or lease, or withdrawal without notice. Copyright © 2020 Transwestern.

# 39 MAIN STREET

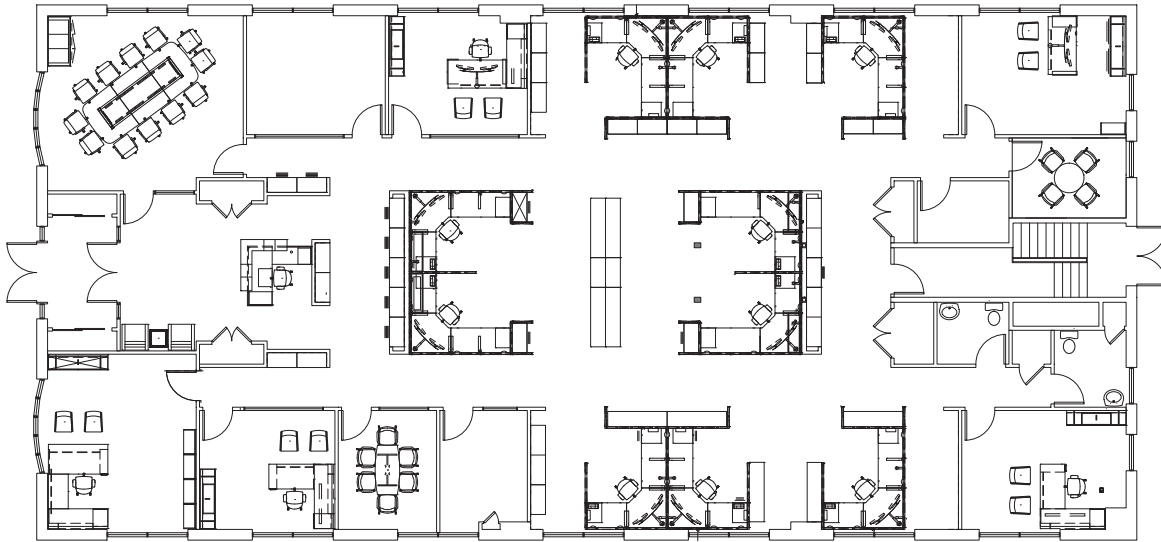
Chatham, NJ



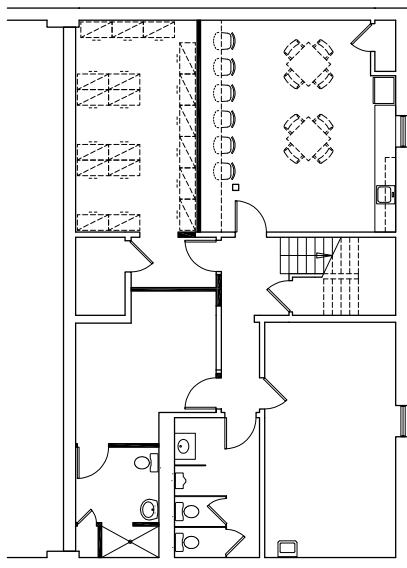
TRANSWESTERN

REAL ESTATE  
SERVICES

## 1ST FLOOR - 6,000 SF



## LOWER LEVEL - 1,580 SF



### Building Amenities:

- Potential for high visibility signage
- Zoned for office / medical use
- Plug & Play space, complete with Avaya phone system
- Potential for full building user

### Leasing Information:

**Douglas Rowe**

973.947.9202

Douglas.Rowe@transwestern.com

**Ryan Prince**

973.947.9207

Ryan.Prince@transwestern.com

The information provided herein was obtained from sources believed reliable; however, Transwestern makes no guarantees, warranties or representations as to the completeness of accuracy thereof. The presentation of this property is submitted subject to errors, omissions, change of price or conditions, prior to sale or lease, or withdrawal without notice. Copyright © 2020 Transwestern.