

# Denver West<sup>®</sup> Office Park

BUILDING

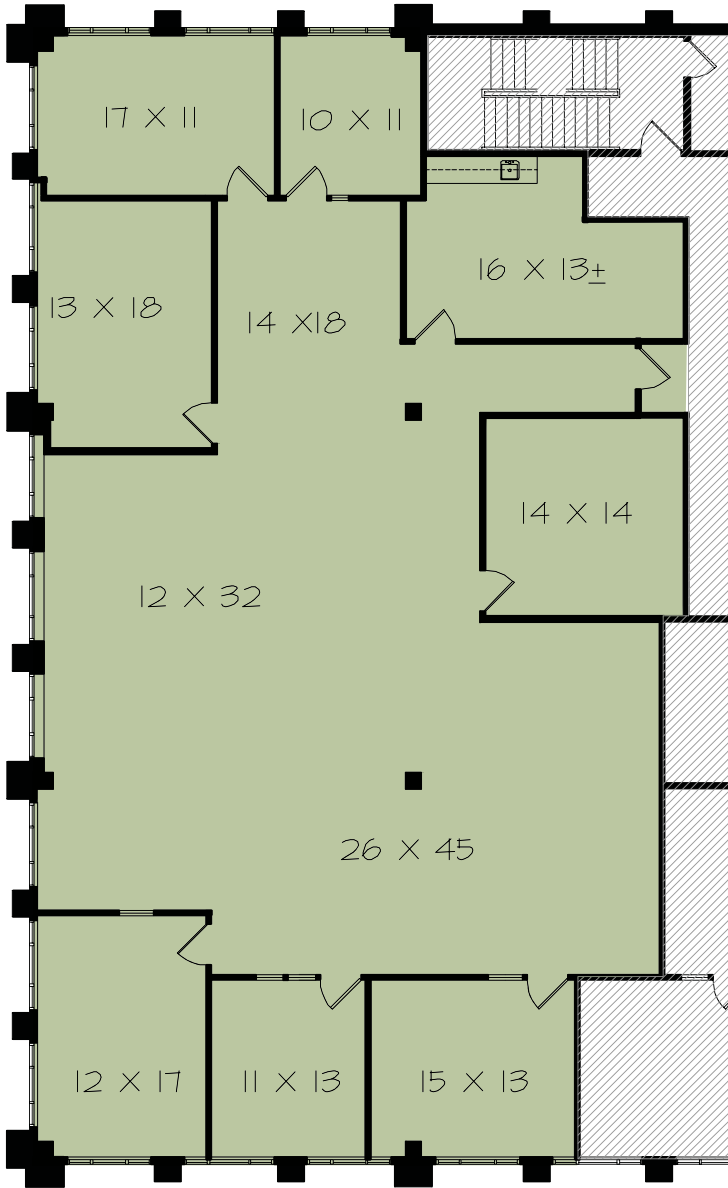
SUITE 220 | 4,077 RSF

1726 COLE BOULEVARD | LAKEWOOD, COLORADO

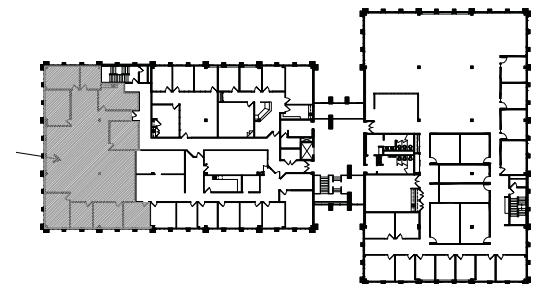


SUITE 220 | 4,077 RSF

[www.denverwest.com](http://www.denverwest.com)



ENTIRE FLOORPLATE



**Blake Harris**  
720.528.6416  
[blake.harris@cbre.com](mailto:blake.harris@cbre.com)  
[www.cbre.com/blake.harris](http://www.cbre.com/blake.harris)

**Frank Kelley**  
720.528.6344  
[frank.kelley@cbre.com](mailto:frank.kelley@cbre.com)  
[www.cbre.com/frank.kelley](http://www.cbre.com/frank.kelley)

CBRE | 8390 E. Crescent Parkway, Suite 300 | Greenwood Village, CO 80111 | [www.cbre.com/Denver](http://www.cbre.com/Denver)

**CBRE**

© 2014 CBRE, Inc. This information has been obtained from sources believed reliable. We have not verified it and make no guarantee, warranty or representation about it. Any projections, opinions, assumptions or estimates used are for example only and do not represent the current or future performance of the property. You and your advisors should conduct a careful, independent investigation of the property to determine to your satisfaction the suitability of the property for your needs. All marks displayed on this document are the property of their respective owners. Photos herein are the property of their respective owners and use of these images without the express written content of the owner is prohibited. REVISED: 05/08/14