



FOR LEASE

BMC West Facility

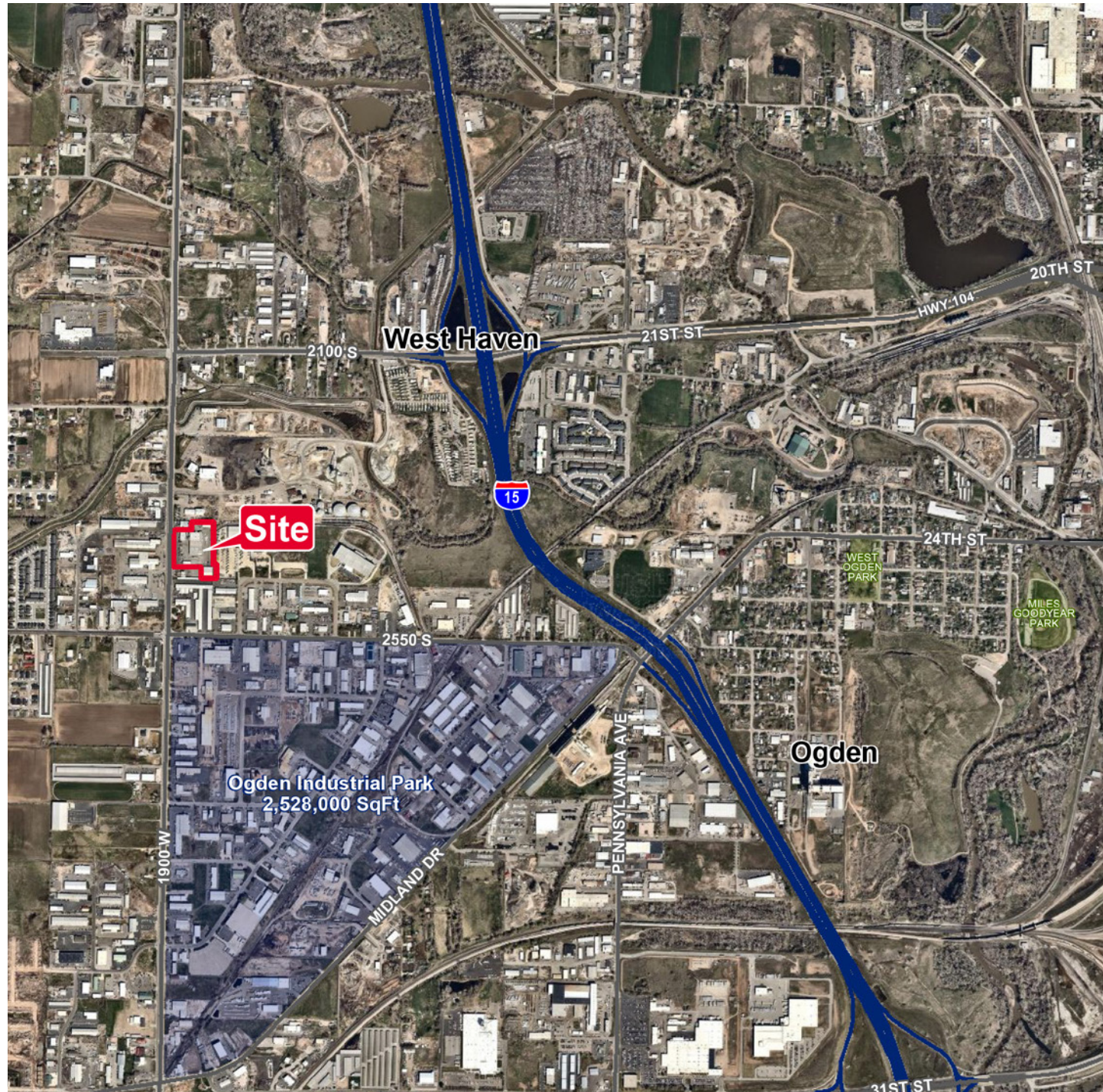
2380 South 1900 West / West Haven, Utah
5.4 ACRE RAIL SERVED INDUSTRIAL PROPERTY



FOR LEASE

BMC West Facility

2380 South 1900 West / West Haven, Utah
5.4 ACRE RAIL SERVED INDUSTRIAL PROPERTY



Property Highlights

- Size: 7,709 SF - 16,364 SF Available
- Lease Rate: \$0.50 - \$0.65 PSF/NNN
- 340 ft Rail Spur
- Zoning- M-1
- APN # 15-068-0011

Craig Boyer
Associate Director / Retail Specialist
+1 801 784 5321
craig.boyer@cushwake.com

372 24th Street, Suite 320
Ogden, Utah 84401
Main +1 801 525 3000
Fax +1 801 525 9596
cushmanwakefield.com

Craig Boyer
Associate Director / Retail Specialist
+1 801 784 5321
craig.boyer@cushwake.com

372 24th Street, Suite 320
Ogden, Utah 84401
Main +1 801 525 3000
Fax +1 801 525 9596
cushmanwakefield.com

Buildings:

Lumber warehouse - 16,900 SF

- Metal truss building
- 2- ground level doors 20' x 14'
- Clear height 15' with 22' on center

Two storage warehouses- north end of property 7,709 SF & 6,061 SF

- Metal buildings
- 4 ground level doors 3- 20' x 12' and 1- 10' x 12'
- 1 dock high door 10' x 12'

Lumber yards will be precluded from operating on site.

