



MadisonMarquette
A Capital Guidance Company

Medical Office Spaces

18800 MAIN STREET, HUNTINGTON BEACH, CA

FOR LEASE | ± 1,440 - ± 3,000 SF



Amenities & Highlights

- Suites 111 & 112 have direct access from parking lot
- 4 exam rooms, 1 private office
- 1 restroom
- Conveniently located across 5 Points Shopping Plaza
- Strong demographics



CONTACT INFORMATION:

Eileen Doody

Senior Vice President Healthcare Services

949.390.5506 | CalBRE 00965140

Eileen.Doody@madisonmarquette.com

The information contained herein has been gathered from sources deemed reliable. Though we have no reason to doubt the accuracy, we do not guarantee it.

2020 Main Street | Suite 800 | Irvine, CA 92614 | P. 949.390.5500 | F. 949.390.550

madisonmarquette.com | CalBRE 01522492

Medical Office Spaces

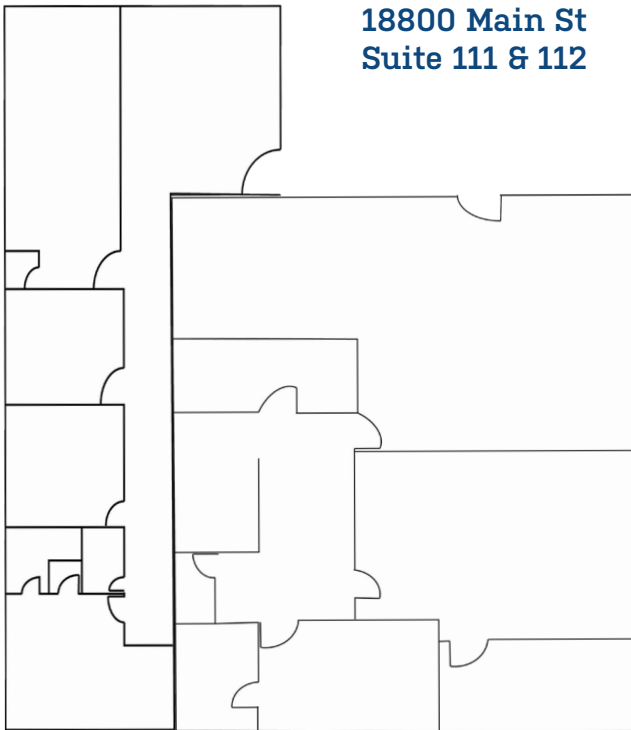
18800 MAIN STREET, HUNTINGTON BEACH, CA



MadisonMarquette
A Capital Guidance Company

FOR LEASE | ± 1,440 - ± 3,000 SF

**18800 Main St
Suite 111 & 112**

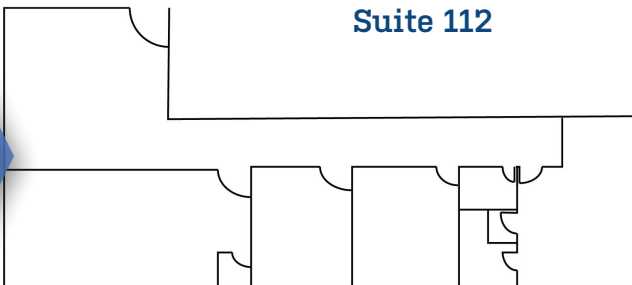


Available Suites

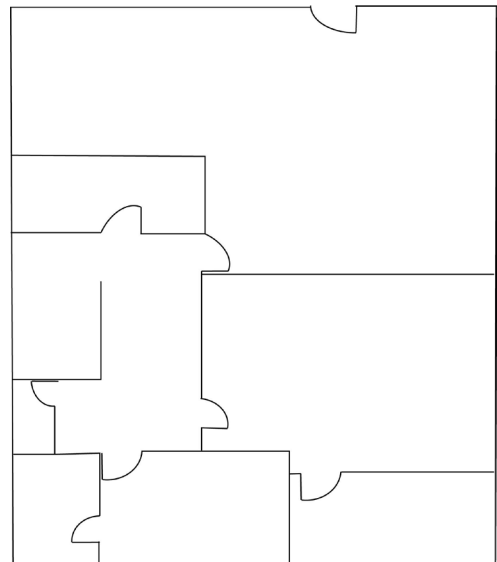
1st Floor Suites	Sq. Ft.
111	± 1,440 SF
112	± 1,560 SF

**Suites 111 & 112 can be combined for ± 3,000 SF*

Suite 112



Suite 111



The information contained herein has been gathered from sources deemed reliable. Though we have no reason to doubt the accuracy, we do not guarantee it.

Eileen Doody | SVP Healthcare Services | 949.390.5506 | CalBRE 00965140 | Eileen.Doody@madisonmarquette.com

2020 Main Street, Suite 800, Irvine, CA, 92614 | madisonmarquette.com | CalBRE 01522492