

**Architects & Engineers**

**Edmund L. Hafer & Associates, P.C.**  
Architecture Engineering Planning Interior Design

Suite 800  
21 Southeast Third Street  
Evansville, Indiana 47708-1433

Telephone: 812 422-4187  
Facsimile: 812 421-6776

**Structural Engineer**

**Hodge Design Associates, P.C.**  
Evansville, Indiana 47713

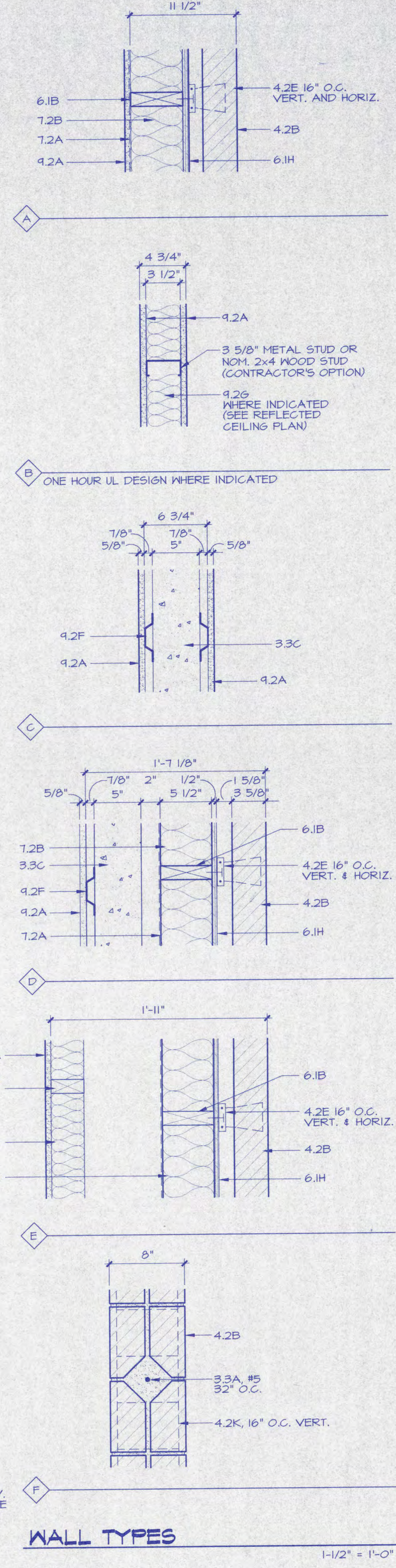
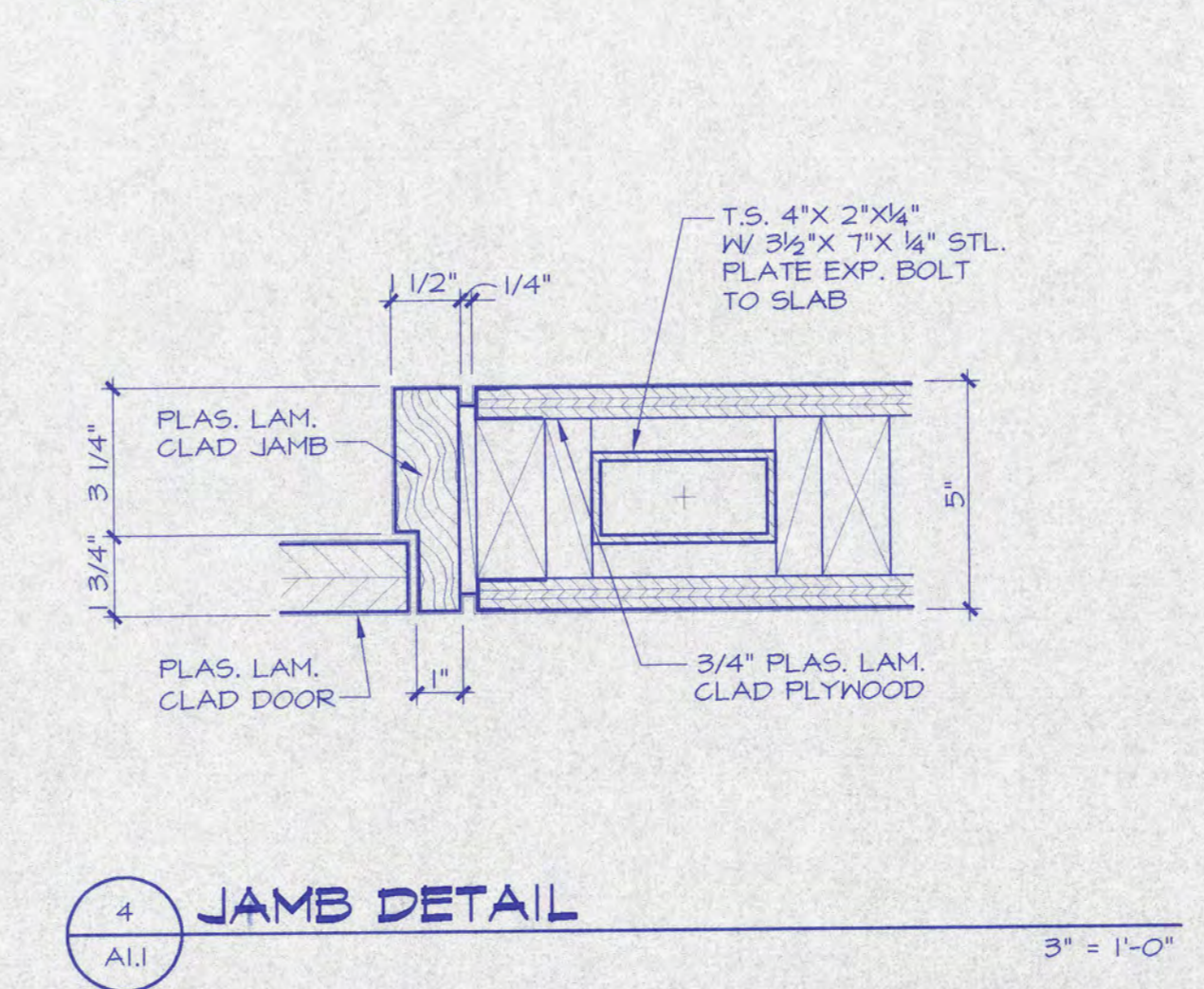
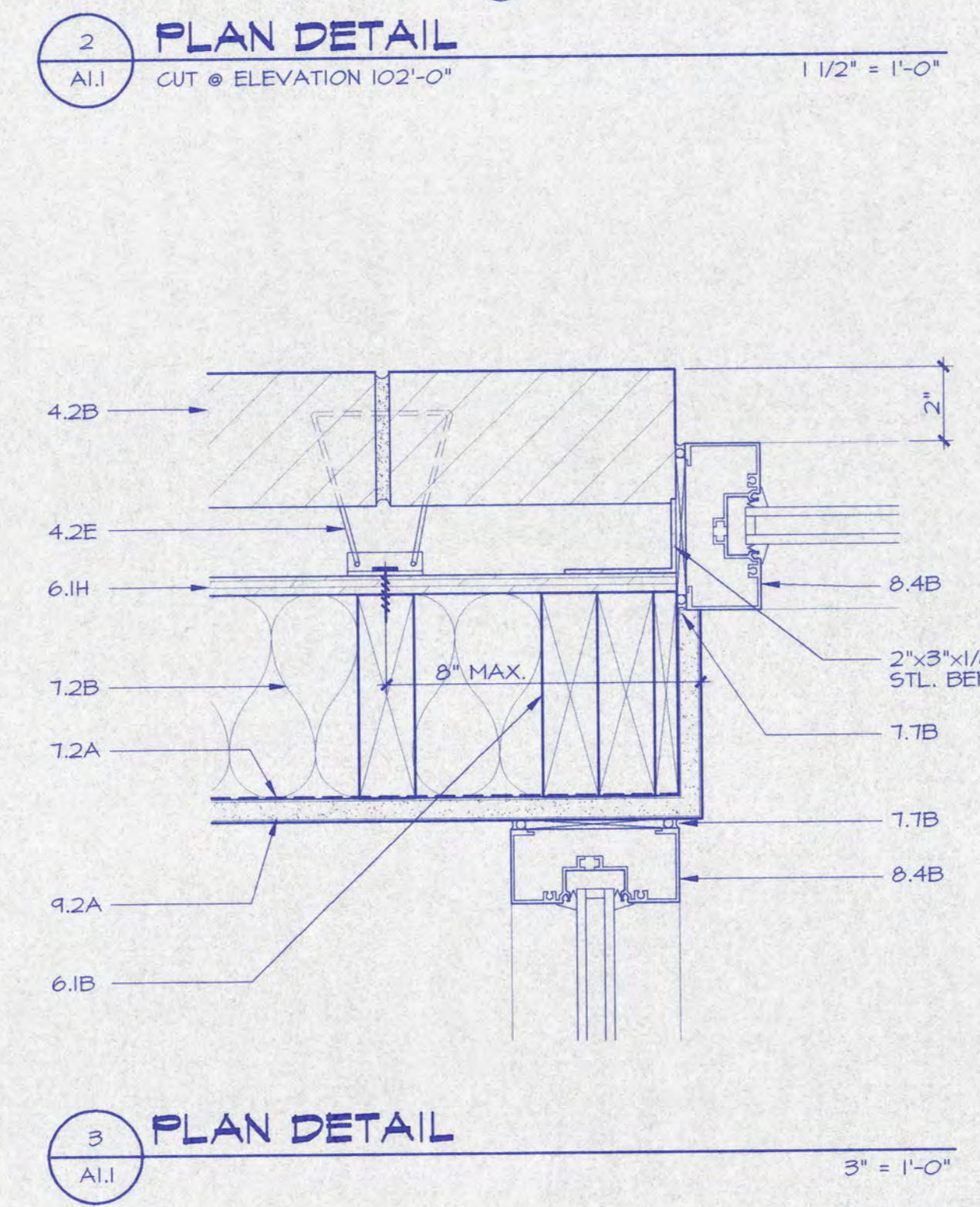
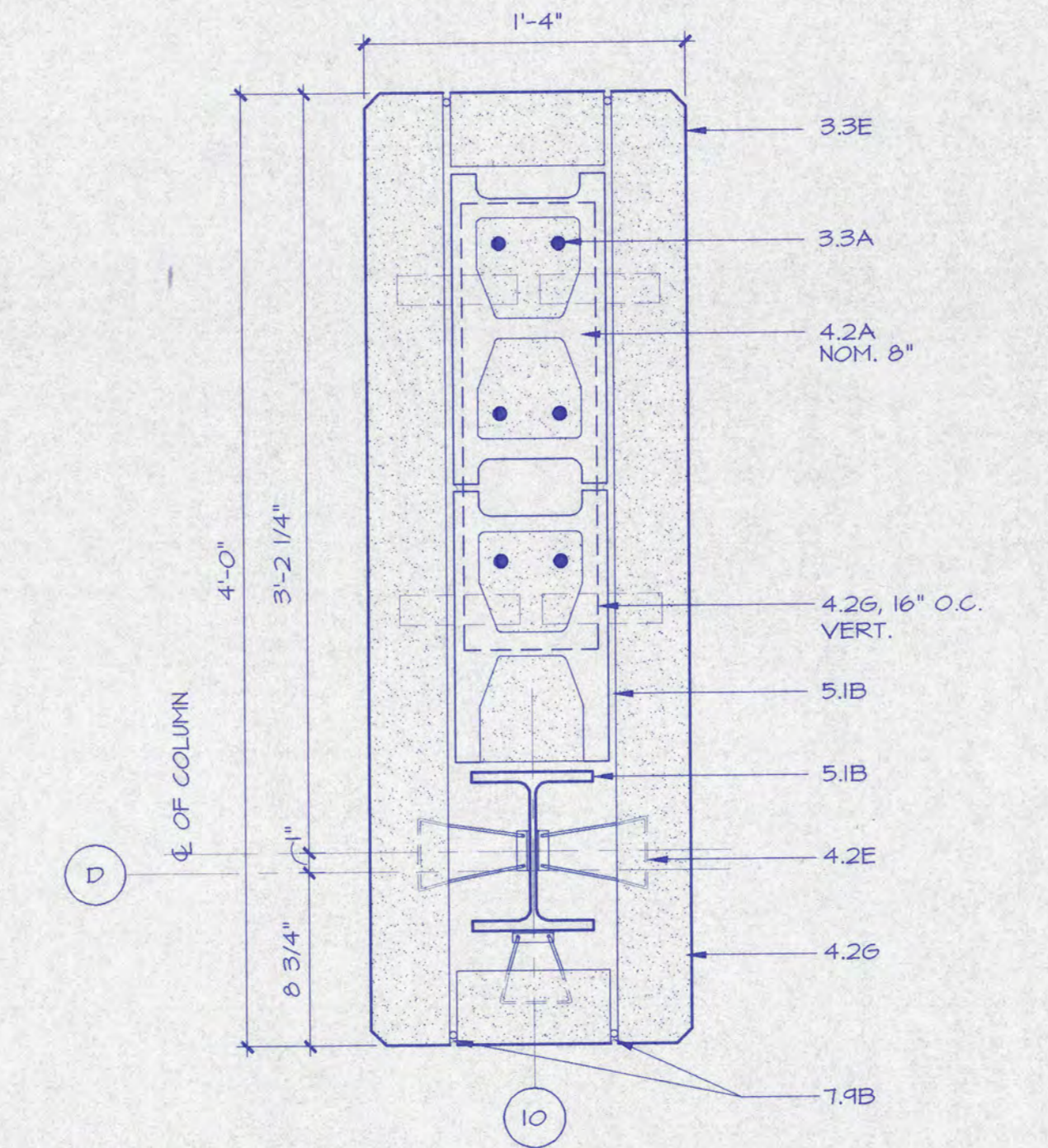
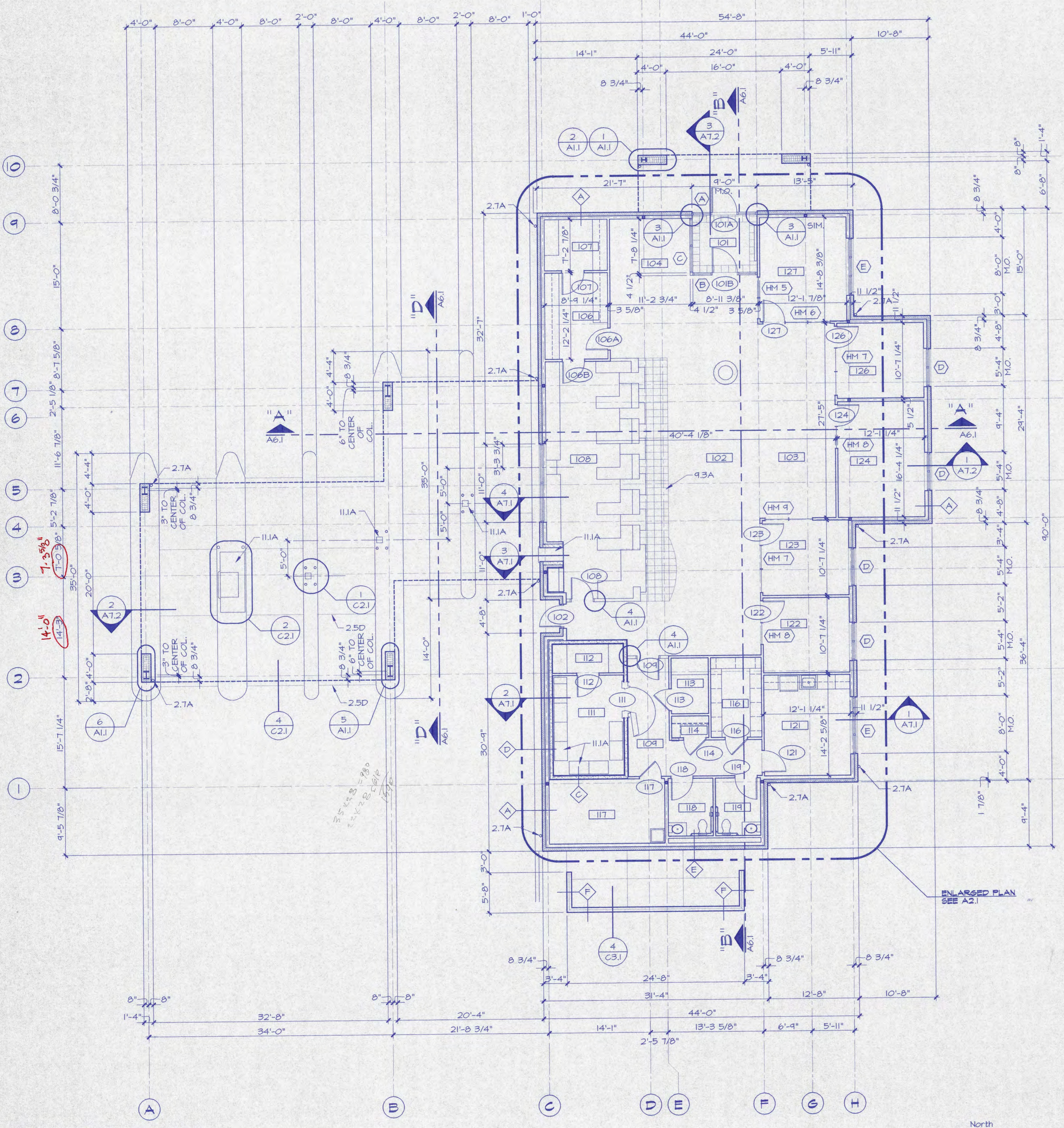
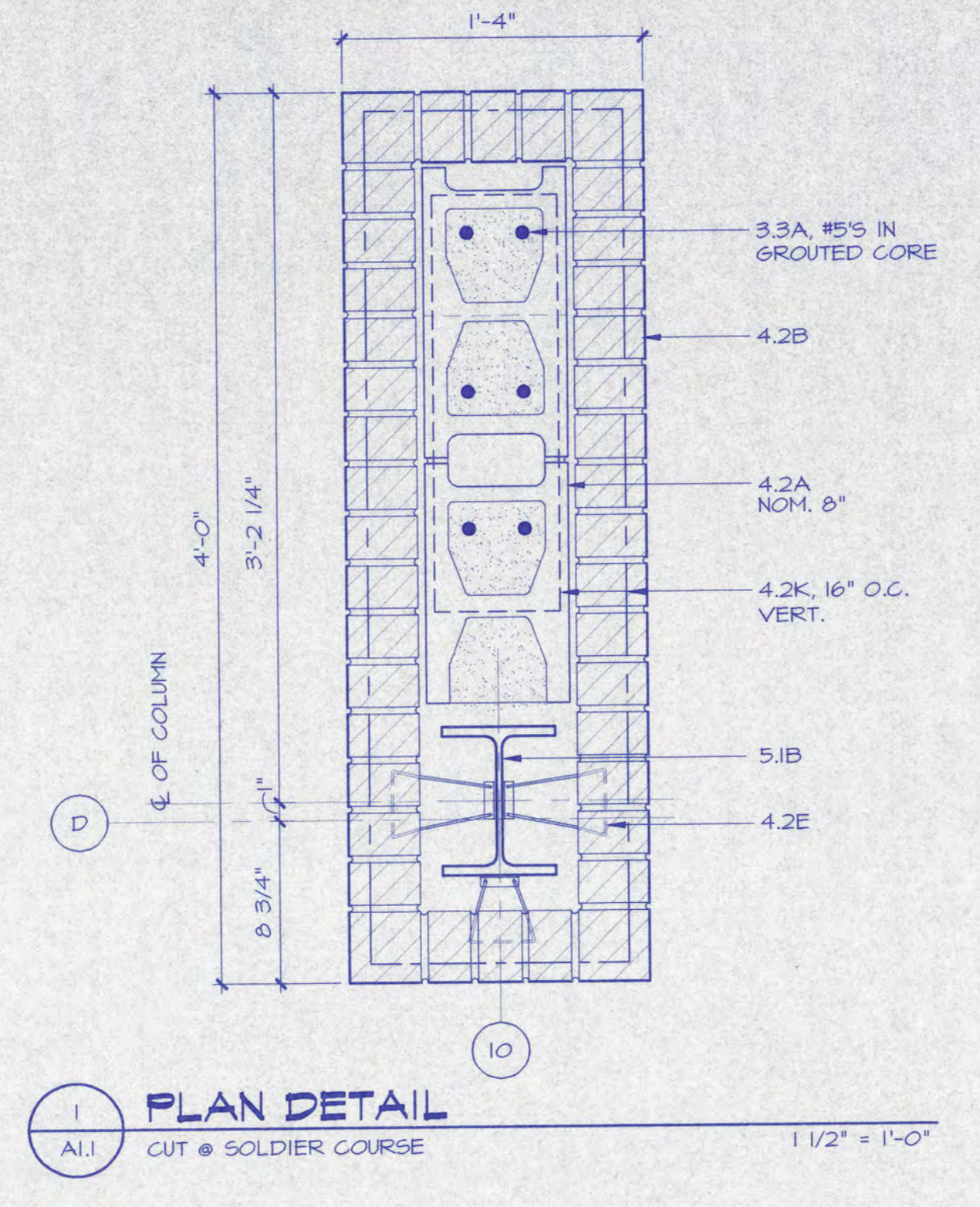
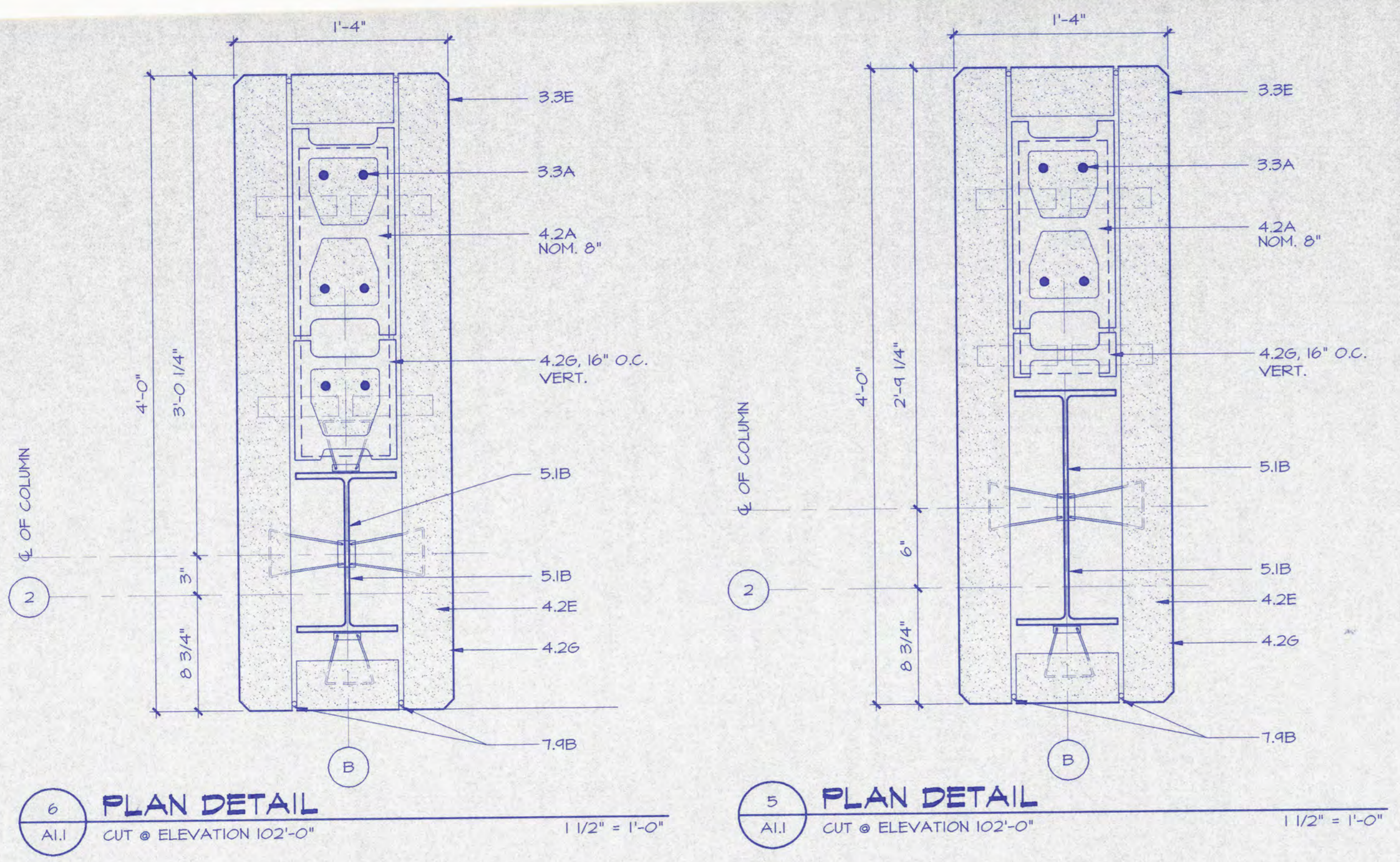
Telephone: 812 422-2558  
Facsimile: 812 422-3337



*Edmund L. Hafer*

**KEY NOTE LEGEND:**

- 2.2A COMPACTED SUBGRADE
- 2.2B SUBBASE MATERIAL
- 2.2C COMPACTED BACKFILL
- 2.2D FINISH GRADE
- 2.2E DRAINAGE FILL
- 2.5A ASPHALT PAVEMENT
- 2.5B CONCRETE WALK (NOTE THICKNESS)
- 2.5C CONCRETE CURB
- 2.5D CONTROL JOINT IN CONCRETE SLAB OR PAVEMENT
- 2.5E CONCRETE PAVEMENT
- 2.5F CONCRETE UNIT PAVERS
- 2.7A CAST IRON DOWNSPOUT BOOT
- 3.3A REINFORCING BAR (SEE STRUCTURAL) UNO.
- 3.3B WELDED WIRE FABRIC
- 3.3C PRECAST CONCRETE VAULT BY OTHERS
- 3.3D CONCRETE COLUMN BASE
- 3.3E CHAMFER 1/2"
- 3.3F CONCRETE FOOTINGS
- 3.3G 4" CONCRETE SLAB-ON-GRADE
- 3.3H UNDERSLAB VAPOR BARRIER
- 3.4A LIMESTONE WATER TABLE
- 3.4B 4" LIMESTONE VENEER
- 3.4C LIMESTONE ACCENT BAND
- 3.4D LIMESTONE CORING
- 4.2A CONCRETE MASONRY UNIT (NOTE SIZE)
- 4.2B BRICK VENEER
- 4.2C EMBEDDED MALL FLASHING
- 4.2D KEEP HOLES, 16" O.C.
- 4.2E ADJUSTABLE MASONRY VENEER ANCHOR
- 4.2F ANCHOR STRAP
- 4.2G HORIZ. - JOINT REINFORCEMENT
- 4.2H BRICK SOLDIER COURSE
- 5.1A STEEL BEAM (SEE STRUCTURAL)
- 5.1B STEEL COLUMN (SEE STRUCTURAL)
- 5.1C STEEL ANGLE (NOTE SIZE)
- 5.1D MISCELLANEOUS STEEL FRAMING
- 5.5A STEEL BOLLARD 4" O.D. (UNO.)
- 6.1A PREFABRICATED WOOD TRUSSES
- 6.1B WOOD FRAMING (NOTE SIZE AND SPACING)
- 6.1C METAL FRAMING ANCHOR
- 6.1D WOOD NAILED PLATE (NOTE SIZE)
- 6.1E WOOD BLOCKING
- 6.1F PLYWOOD SHEATHING 5/8" THICK
- 6.1G WOOD HEADER
- 6.1H PLYWOOD MALL SHEATHING 1/2" THICK W/ AIR INFILTRATION BARRIER
- 6.4A PLASTIC LAMINATE CLAD CABINETS
- 6.4B PLASTIC LAMINATE CLAD PARTITION
- 6.4C PLASTIC LAMINATE CLAD PARTITION
- 7.2A REINFORCED BATT INSULATION 6" UNO.
- 7.2B POUSTRY NETTING
- 7.2C EXTERIOR SHEATHING BOARD
- 7.2D 2" THICK RIGID FOUNDATION INSULATION
- 7.2E FINISH SYSTEM
- 7.3A COMPOSITE METAL PANEL
- 7.3B PANEL JOINT
- 7.4A SHEET METAL STANDING SEAM SHEET
- 7.4B METAL ROOFING
- 7.4C SHEET METAL GUTTER
- 7.4D SHEET METAL TRIM
- 7.4E RED ROSIN PAPER OVER 30 POUND BUILDING FELT
- 7.4F METAL DOWNSPOUT, 4"
- 7.7A SOFFIT VENT
- 7.7B EXTERIOR BUILDING BOARD AND FINISH SYSTEM
- 7.7C CONTROL JOINT IN EXT. BLDG. BID # FINISH SYSTEM
- 7.8A ALUMINUM FRAMED GLASS SKYLIGHT
- 7.9A JOINT SEALANT
- 7.9B JOINT SEALANT OVER BACKER ROD
- 8.1A HOLLOW METAL FRAME
- 8.1B FRAME ANCHOR
- 8.1C HOLLOW METAL DOOR
- 8.2A SOLID CORE WOOD DOOR
- 8.2B ACCESS DOOR 3'-6" x 3'-6"
- 8.3A ALUMINUM ENTRANCE DOOR
- 8.3B ALUMINUM FRAMING
- 8.3C ALUMINUM TRIM OR BRAKE METAL
- 8.8A 1" INSULATED GLASS
- 8.8B 1/4" TEMPERED GLASS
- 8.8C 1/4" GLASS
- 8.8D 1" INSULATED GLASS - Tempered
- 8.8E 8.8D
- 9.2A GYPSUM DRYWALL, 5/8" THICK (UNO.)
- 9.2B GYPSUM DRYWALL CEILING/SOFFIT, 5/8" THICK (UNO.)
- 9.2C CONTROL JOINT IN GYPSUM DRYWALL
- 9.2D METAL EDGE TRIM
- 9.2E METAL STUDS, 16" O.C.
- 9.2F METAL HAT SHAPED FURRING CHANNELS, 1/8" UNO.
- 9.2G SOUND BATT INSULATION
- 9.3A FLOOR TILE
- 9.3B FLOOR TILE BASE
- 9.3C METAL EDGE STRIP
- 9.4A INTERIOR STONE FACING
- 9.5A ACOUSTICAL CEILING PANELS
- 9.5B ACOUSTICAL CEILING TILE
- 9.6A CARPET
- 9.6B RUBBER BASE
- 9.6C RESILIENT FLOORING
- 10.1A TOILET PARTITION
- 10.2A METAL LOUVER
- 10.5A FIRE EXTINGUISHER IN CABINET
- 11.1A BANK EQUIPMENT N.I.C.
- 12.5A WINDOW TREATMENT
- 12.6A ENTRANCE MAT
- 15.1A DUCTWORK
- 15.2B DIFFUSER
- 15.2C GRILLE
- 15.2D VENT
- 15.4A ROOF DRAIN
- 15.4B ROOF OVERFLOW DRAIN
- 15.8A FINNED - TUBE RADIANT HEATER
- 16.1A LIGHT FIXTURE



**GENERAL FLOOR PLAN NOTES:**

1. ALL DIMENSIONS ARE FROM FACE OF STUD, FACE OF MASONRY, OR CENTERLINE OF COLUMN UNLESS NOTED OTHERWISE.
2. PROVIDE WOOD BLOCKING IN WALLS AND CEILING AS REQUIRED FOR INSTALLATION OF BANK EQUIPMENT, HILLWORK OR OTHER SURFACE MOUNTED ACCESSORIES.
3. VERIFY ALL ROUGH-IN DIMENSIONS AND REQUIREMENTS OF BANK EQUIPMENT WITH MANUFACTURER.
4. GENERAL CONTRACTOR SHALL BE RESPONSIBLE FOR ALL NECESSARY GROUTING REQUIRED AFTER VAULT DOOR FRAME AND THRESHOLD ARE SET BY EQUIPMENT SUPPLIER.
5. FOR KEY NOTE ITEM 9.3C - "METAL EDGE STRIP" PROVIDE SCHLUTER SYSTEM MODEL A.ETK.100.

The drawings, specifications and other documents, including those in electronic form prepared by Edmund L. Hafer & Associates, P.C. (ELHA) for this project are instruments of service, and may be used solely with respect to this project. The documents may not be reproduced or modified by a third party without first obtaining the express written consent of ELHA. Authorized use of electronic media or files does not guarantee the accuracy of the information contained and that no changes or modifications have been made, these files must be compared to the project's contract documents with stamped and sealed certification and applicable approved modifications.

Architect's Project No.  
**V10-207**  
Date:  
**March, 2000**  
Revisions:

Sheet Title and Number  
**Floor Plan and Wall Types**