

43 COLUMBIA AVENUE
PONTIAC, MICHIGAN

LAND FOR SALE
4 Acres Available

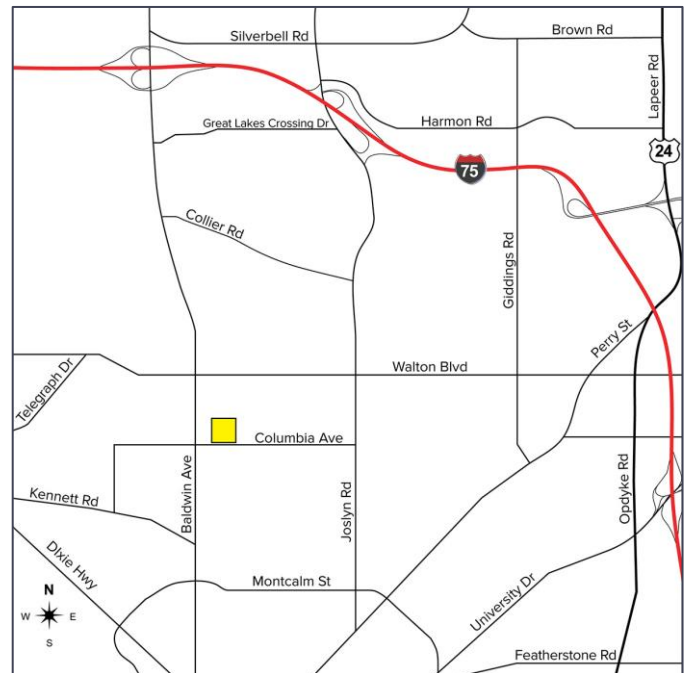


**SIGNATURE
ASSOCIATES**
KNOW SIGNATURE | KNOW RESULTS



PROPERTY FEATURES

- Situated on 4 acres
- Zoned Heavy Industrial
- 640' x 272' dimensions
- All utilities on-site
- Existing school is being demolished as of Spring 2021
- Sale Price: \$700,000



For more information, please contact:

KRIS PAWLOWSKI
(248) 359 3801
kpawlowski@signatureassociates.com

SIGNATURE ASSOCIATES
One Towne Square, Suite 1200
Southfield, MI 48076
www.signatureassociates.com

Information is subject to verification and no liability for errors or omissions is assumed. Price is subject to change and listing withdrawal.