

# FOR LEASE

# 5555 Lakeview Offices



***CLASS A CONCRETE AND STEEL***

***100% COVERED PARKING***

***ADJACENT TO CARILLON POINT  
AMENITIES***

***METICULOUSLY MAINTAINED***

***WESTERN VIEWS OF LAKE  
WASHINGTON AND SEATTLE SKYLINE***

- **3,217 RSF - Suite 201**
- [Virtual Tour Link](#)
- Ten (10) perimeter private offices, reception with built in desk, conference, kitchen & server room
- Suite 201 – 10 stalls @ \$75/stall/mo.
- \$38.00 PSF, NNN (est. \$12.00 PSF)



For more information please contact:

**Brent Nelson**

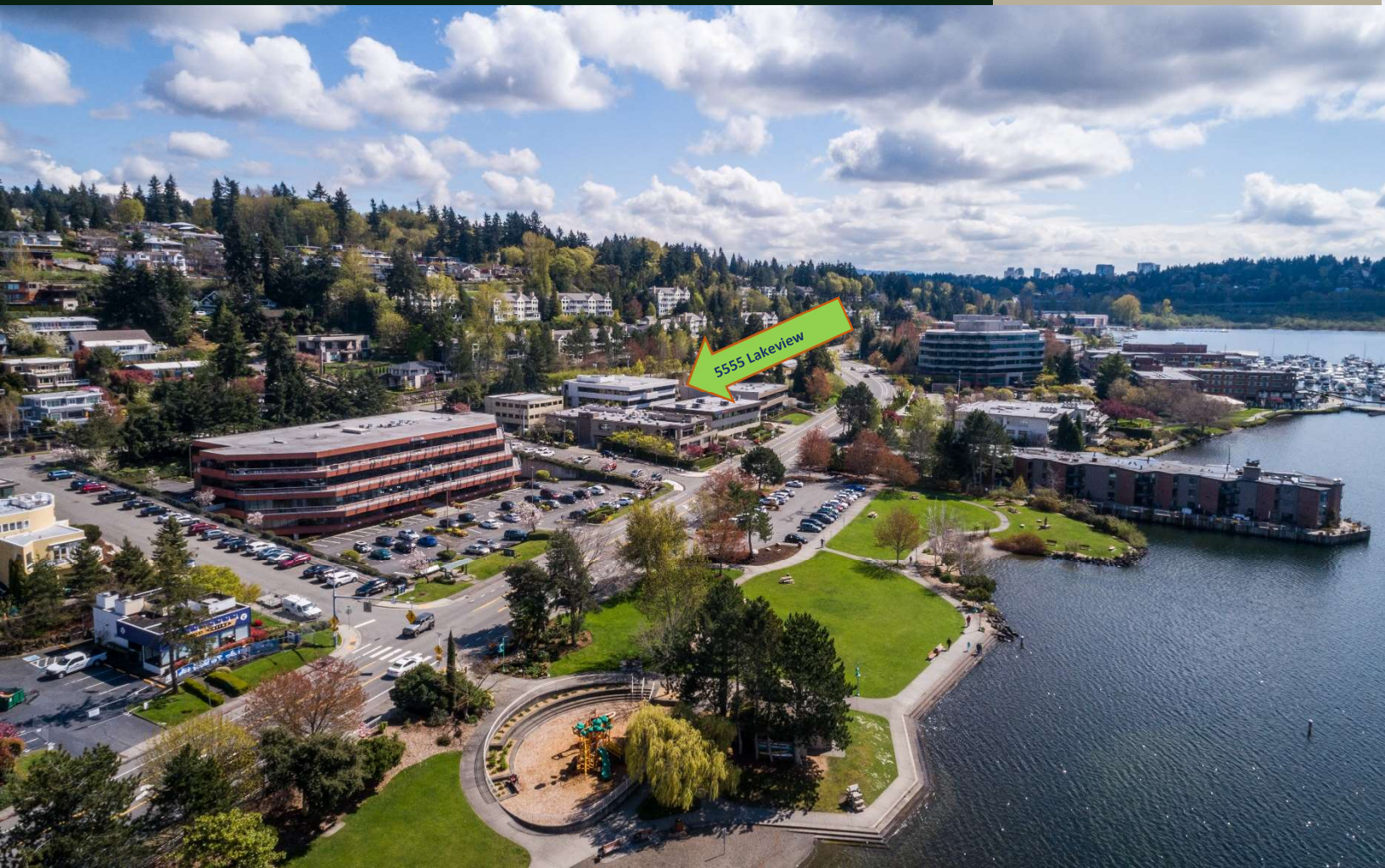
**425.455.2664**

**[brent@saratogaequities.com](mailto:brent@saratogaequities.com)**



**SARATOGA  
EQUITIES**

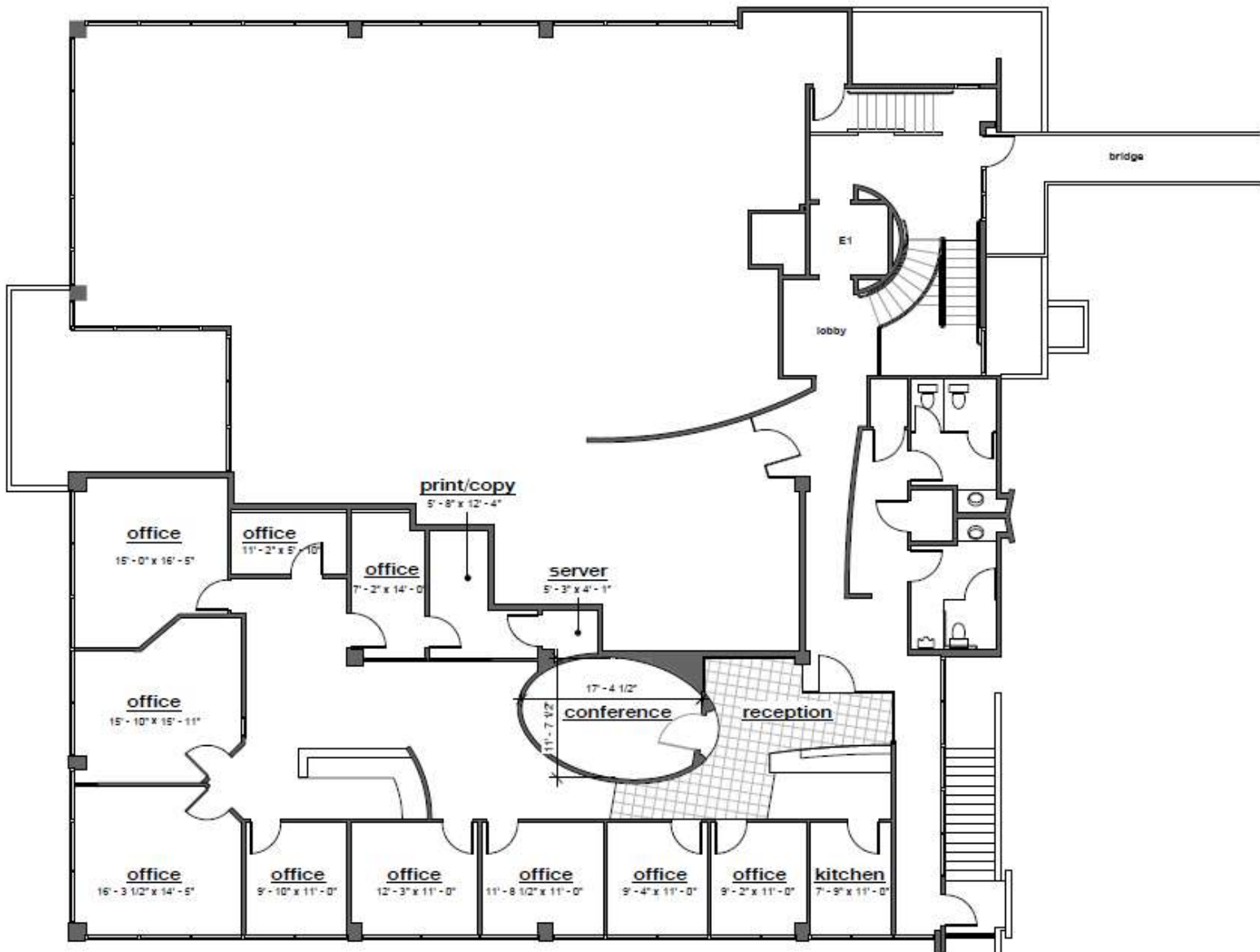




❖ **Close access to Carillon Point and Houghton amenities, Google's Kirkland campus, Kirkland Urban, South Kirkland Park & Ride and four major grocery stores. Nearby Kirkland waterfront Parks and Kirkland Cross Corridor bike/walk path.**







[Virtual Tour Link Click Here](#)

For more information please contact:

**Brent Nelson**

**425.455.2664**

**[brent@saratogaequities.com](mailto:brent@saratogaequities.com)**



**SARATOGA**  
**EQUITIES**