



372

Between Franklin & White Streets
BROADWAY

THE LOWEST PRICE ON
BROADWAY

5,000 SF OF SELLING SPACE FOR \$33,000

- Recently renovated space in white box condition
- Updated electric and HVAC in place for both ground and basement levels
- Lower level legal for selling
- Perfect for retail, showroom, production company, or fitness
- Mezzanine in rear of store provides interest and opportunity for mixed use within the space
- Pop ups welcomed
- Sorry, no food uses

DETAILS

Ground Level

3,000 SF Approx.

Selling Lower Level

2,000 SF Approx.

Frontage

20'

Ceiling Height

15' 10" (Ground)

10' 6" (Lower)

10' (Mezzanine)

Term

10-15 Years

Possession

Immediate

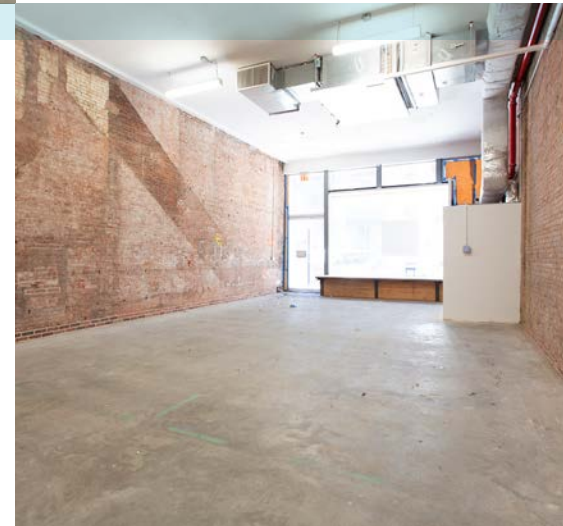
Price

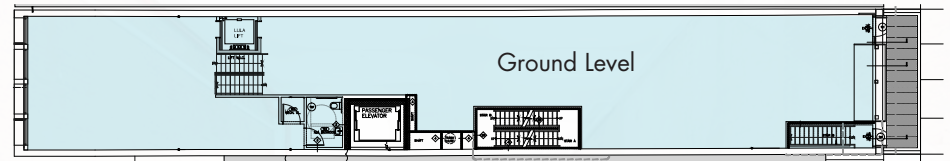
\$33,000/Month



NEIGHBORING RETAILERS

- Gourmet Garage
- Blue Bottle Coffee
- Think Coffee
- Ricky's
- Steven Alan
- Aire Ancient Baths
- Artist Space Bookshop
- Y7 Gallery
- Brite Buy Wine & Spirits
- Pearl River Mart
- Harley-Davidson
- Nili Lotan
- Bouley Botanical
- Allied Maker
- Bortolami Gallery
- Sky Ting Yoga





372

Between Franklin & White Streets
BROADWAY

FOR INFORMATION, PLEASE CONTACT

Steve Rappaport
646.673.8750
steve@sinvin.com

Christopher Owles
212.604.9002
chris@sinvin.com

