

# Tanasbourne Town Center

2785 NW Town Center Drive, Hillsboro, OR 97006

6% Fee to Brokers

FOR  
LEASE



## Features

With outstanding exposure on 185th Avenue. This Tanasbourne office building is well suited for office space users who could benefit from signage with retail exposure.

- 4,000 RSF
- Available Now
- Parking Ratio of 4/1,000
- Access to Highway 26 at 185th Ave.
- Superior Signage Opportunity
- 2nd Floor Space
- Elevator Served
- \$18.00/SF Full Service



## Contact

**Cliff Finnell, SIOR**  
GVA Kidder Mathews  
503.221.2295  
cfinnell@gvakm.com

**George Macoubray**  
Commercial Realty Advisors, Inc.  
503.504.2957  
george@cra-nw.com

[www.gvakm.com](http://www.gvakm.com)

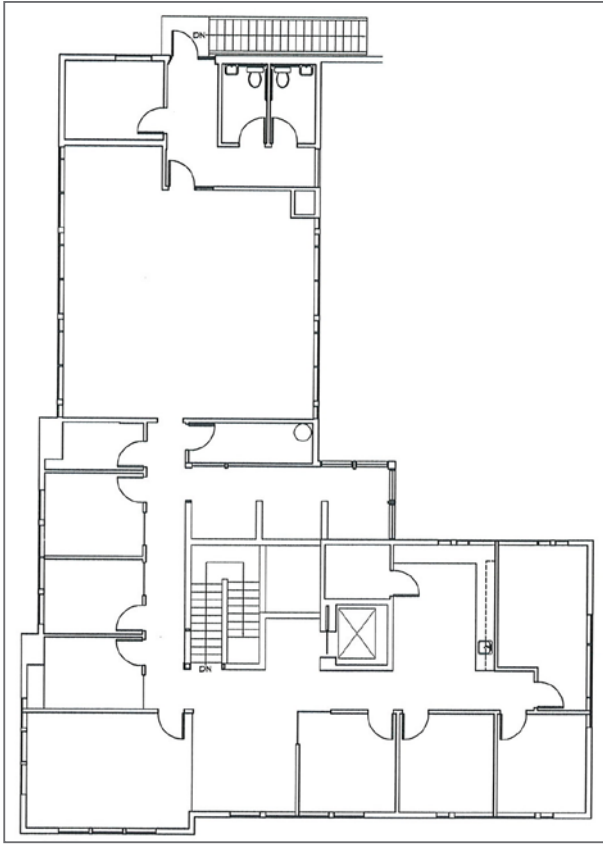


# Tanasbourne Town Center

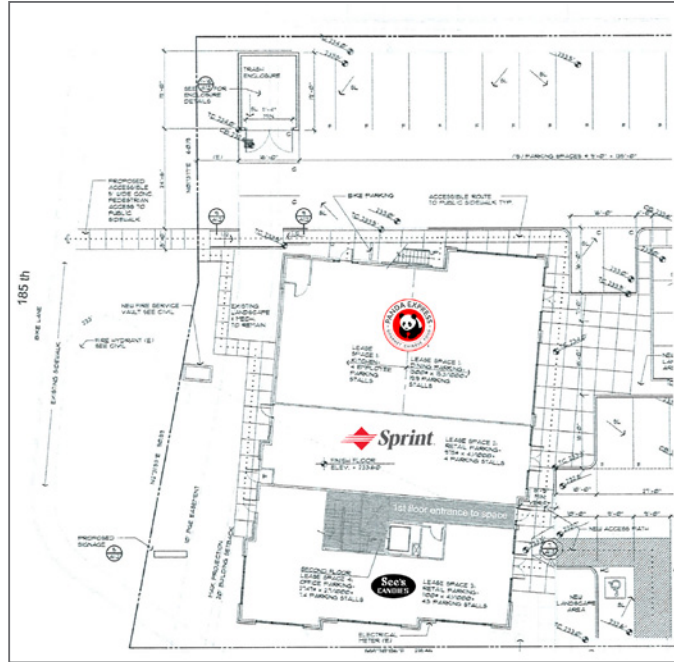
2785 NW Town Center Drive, Hillsboro, OR 97006

FOR LEASE

Space Plan



First Floor Tenants



## Area Amenities



- Minutes to Legacy Laboratory Service, Westside Pediatric Clinic, Shopping and Housing.

## Contact

### Cliff Finnell, SIOR

GVA Kidder Mathews  
503.221.2295  
cfinnell@gvakm.com

### George Macoubray

Commercial Realty Advisors, Inc.  
503.504.2957  
george@cra-nw.com

www.gvakm.com

