

FOR LEASE

# HURSTBOURNE PLACE

9300

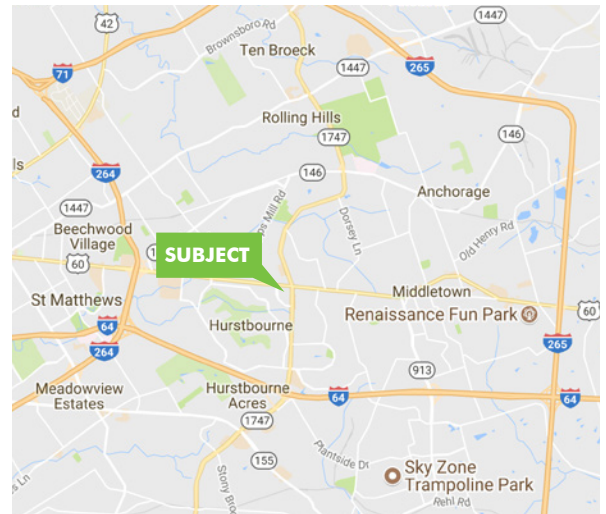
SHELBYVILLE ROAD

Louisville, KY



## PROPERTY FEATURES

- + Landmark 13-story Class A office tower
- + Large efficient floor plates
- + Both large and small suites available
- + 11.41 acre site area, part of a 27 acre, mixed-use development
- + Tallest building in the Hurstbourne/Lyndon office submarket
- + Easily accessible from interstates 264, 64 and 265
- + Near prominent shopping and residential areas



## CONTACT US

### DAVID C. SEAY, CCIM

Vice President

+1 502 412 7643

david.seay@cbre.com

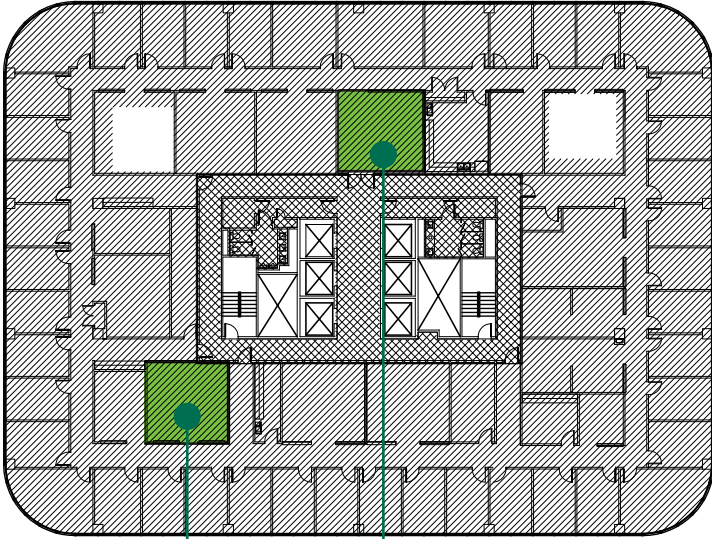
[www.cbre.com/louisville](http://www.cbre.com/louisville)

**CBRE**



## FLOOR PLANS

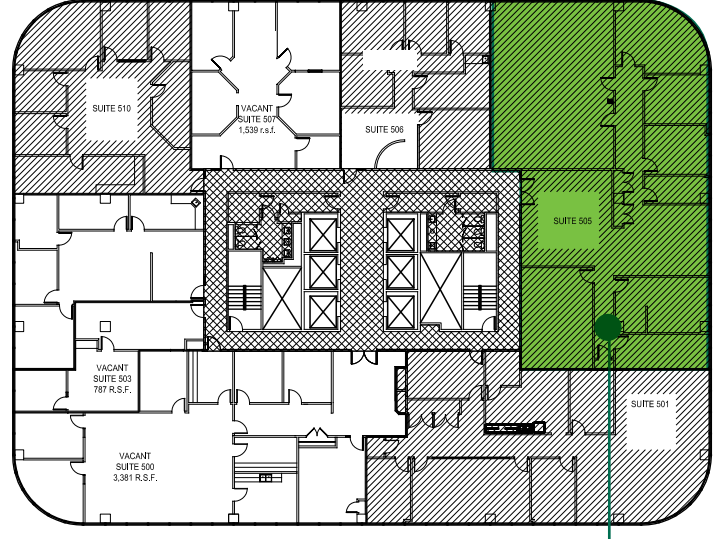
### FOURTH FLOOR



Available  
Suite 401  
5,105± SF

Available  
Suite 400  
13,311±

### FIFTH FLOOR



Available  
Suite 505  
4,517± SF

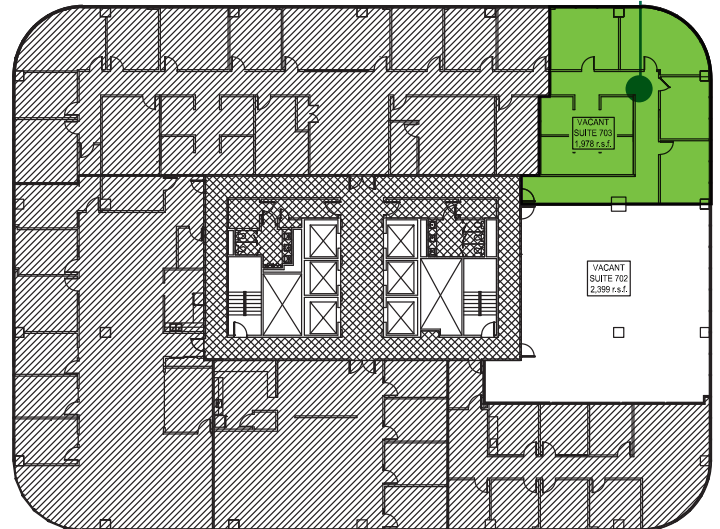
### SIXTH FLOOR



Available  
Suite 603  
1,978± SF

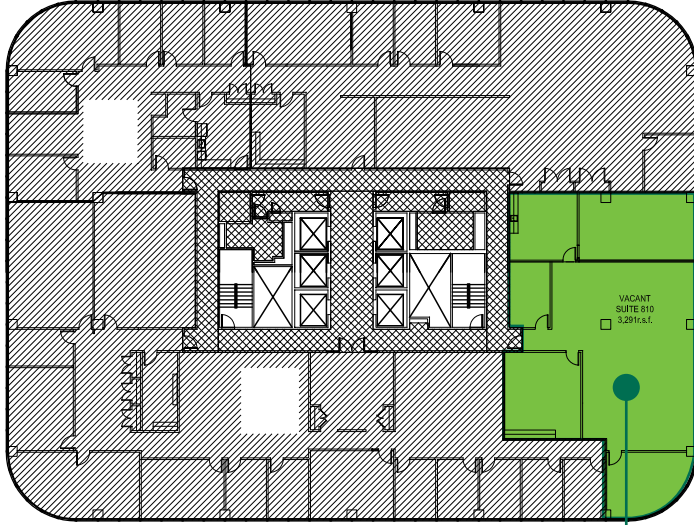
Available  
Suite 607  
2,369± SF

### SEVENTH FLOOR



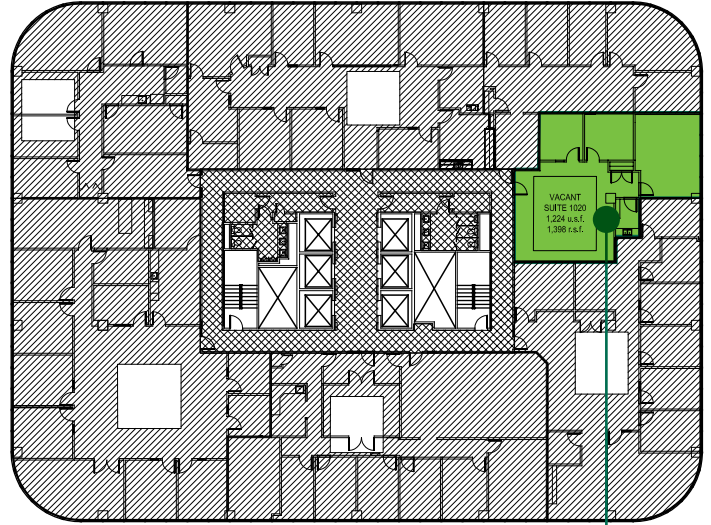
Available  
Suite 703  
1,978± SF

## EIGHTH FLOOR



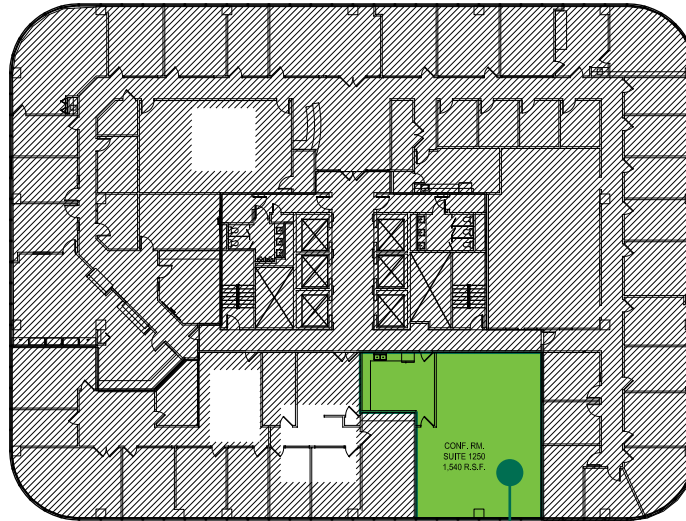
Available  
Suite 810  
3,291 ± SF

## TENTH FLOOR



Available  
Suite 1020  
1,398 ± SF

## TWELFTH FLOOR



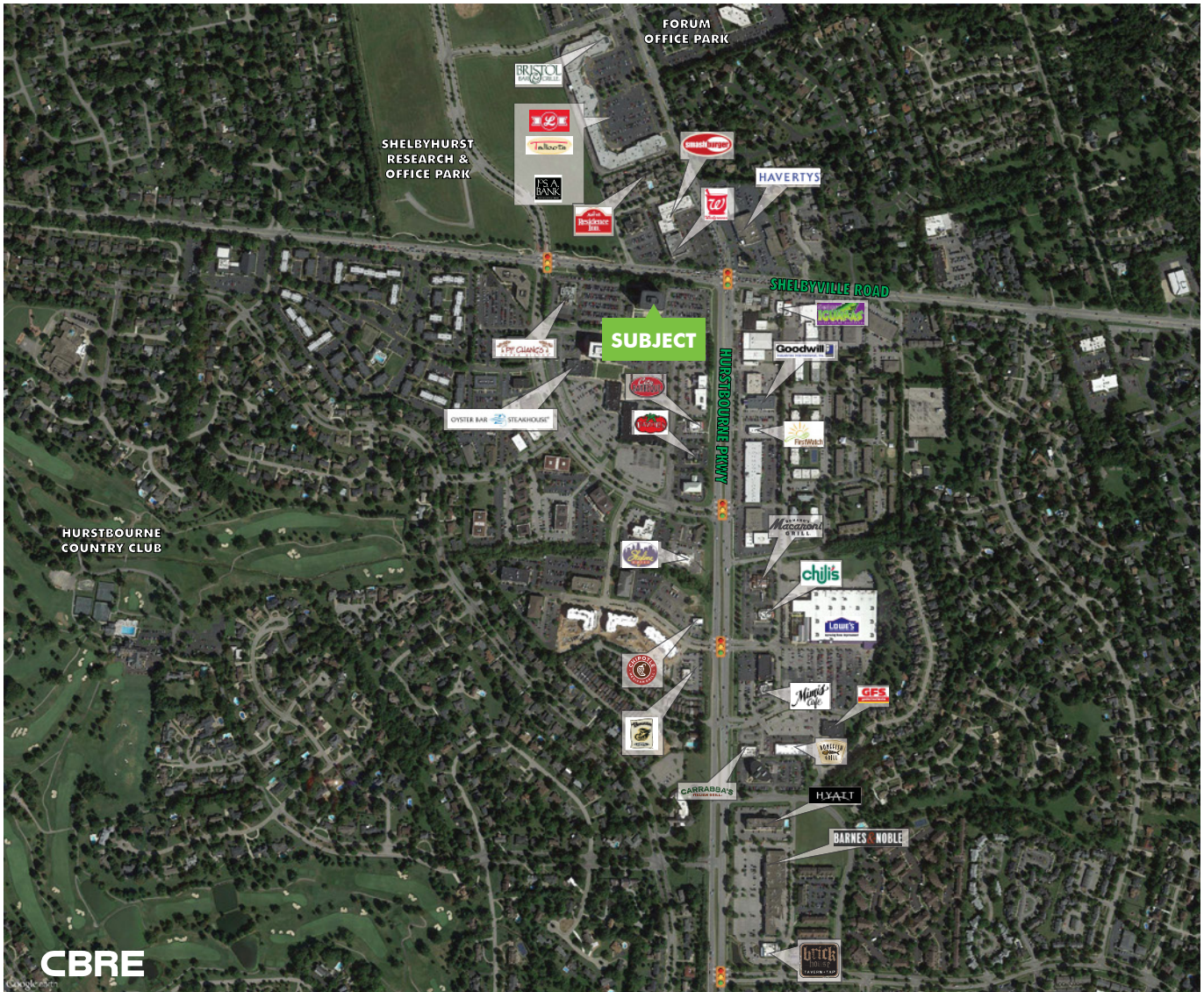
Available  
Suite 1250  
1,540 ± SF

# FOR LEASE HURSTBOURNE PLACE

9300  
SHELBYVILLE ROAD  
Louisville, KY



## PROPERTY LOCATION HIGHLY DESIRABLE HURSTBOURNE/SHELBYVILLE ROAD VISIBILITY



© 2018 CBRE, Inc. All rights reserved. This information has been obtained from sources believed reliable, but has not been verified for accuracy or completeness. You should conduct a careful, independent investigation of the property and verify all information. Any reliance on this information is solely at your own risk. CBRE and the CBRE logo are service marks of CBRE, Inc. All other marks displayed on this document are the property of their respective owners. Photos herein are the property of their respective owners. Use of these images without the express written consent of the owner is prohibited.