



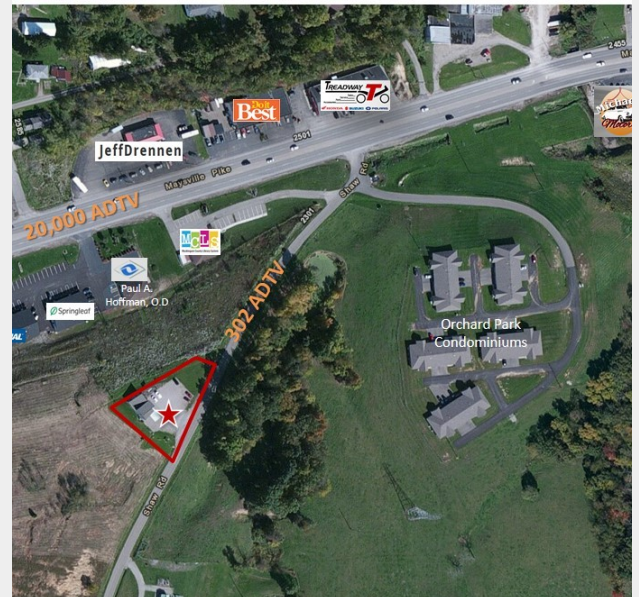
2355 Shaw Rd

2355 Shaw Rd, Zanesville, Ohio 43701

Property Features

- ±1,456 SF Office Building
- Ideal space for a dental or medical practice.
- Great potential for any individual practice servicing clients.
- Ample parking with 20 dedicated spaces.
- Great visibility with easy from main street.

Sale Price: \$275,000



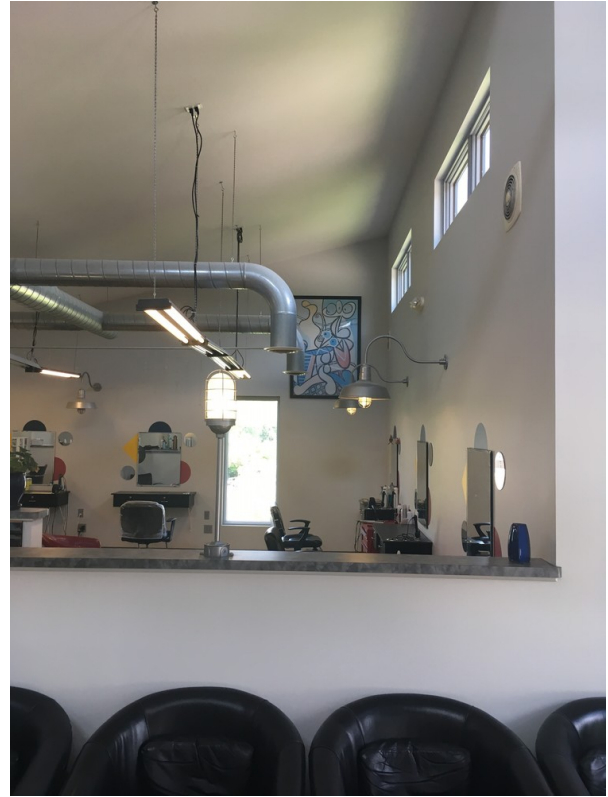
For more information:

Kim Benincasa

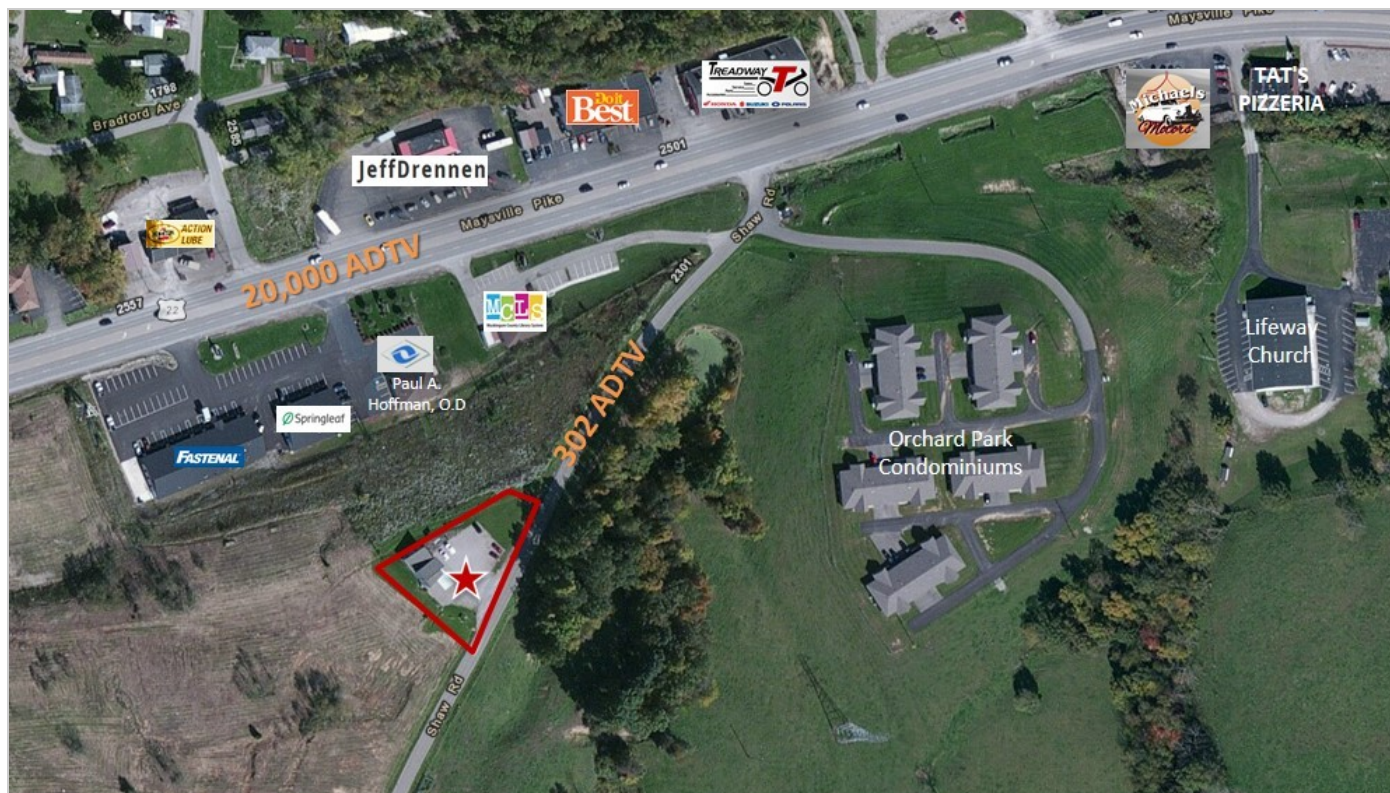
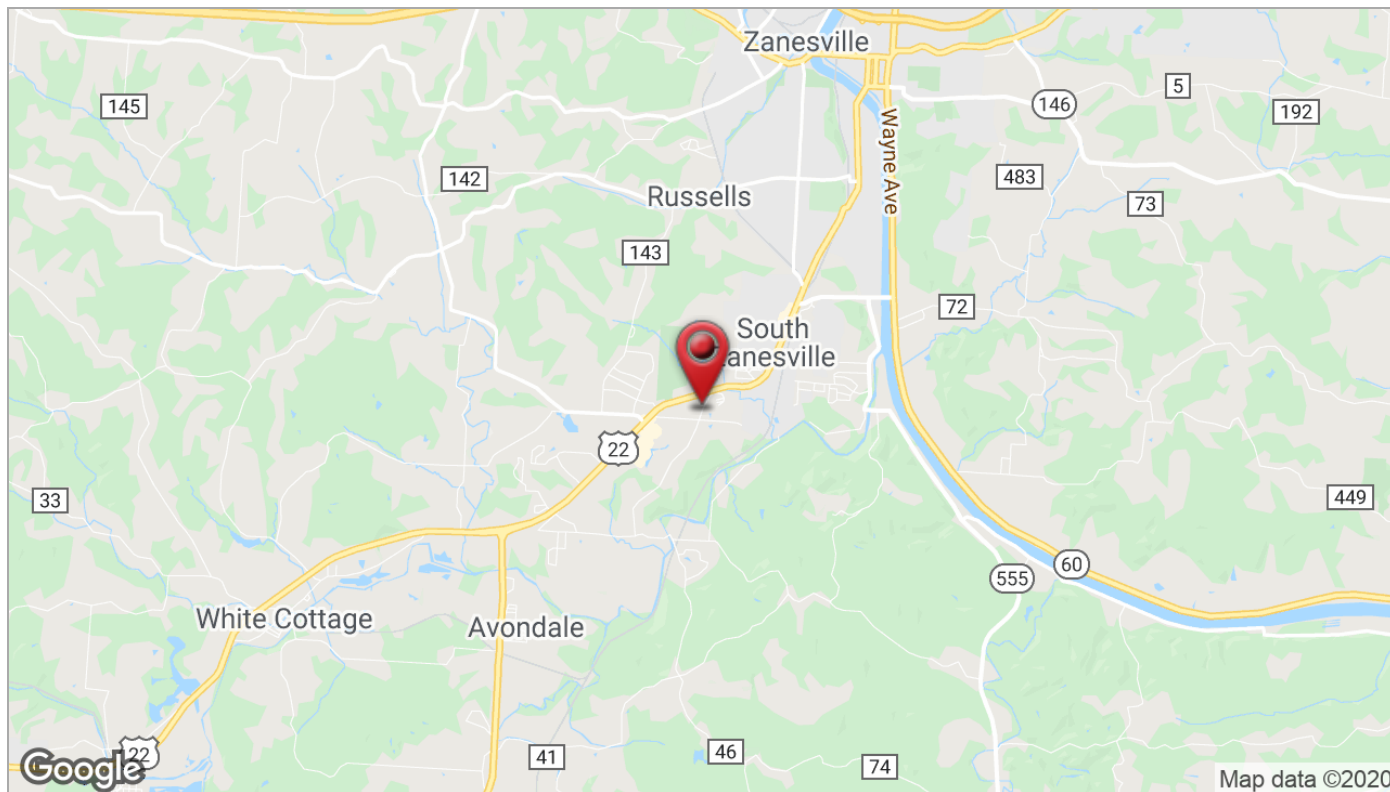
614 629 5280 • kbenincasa@ohioequities.com

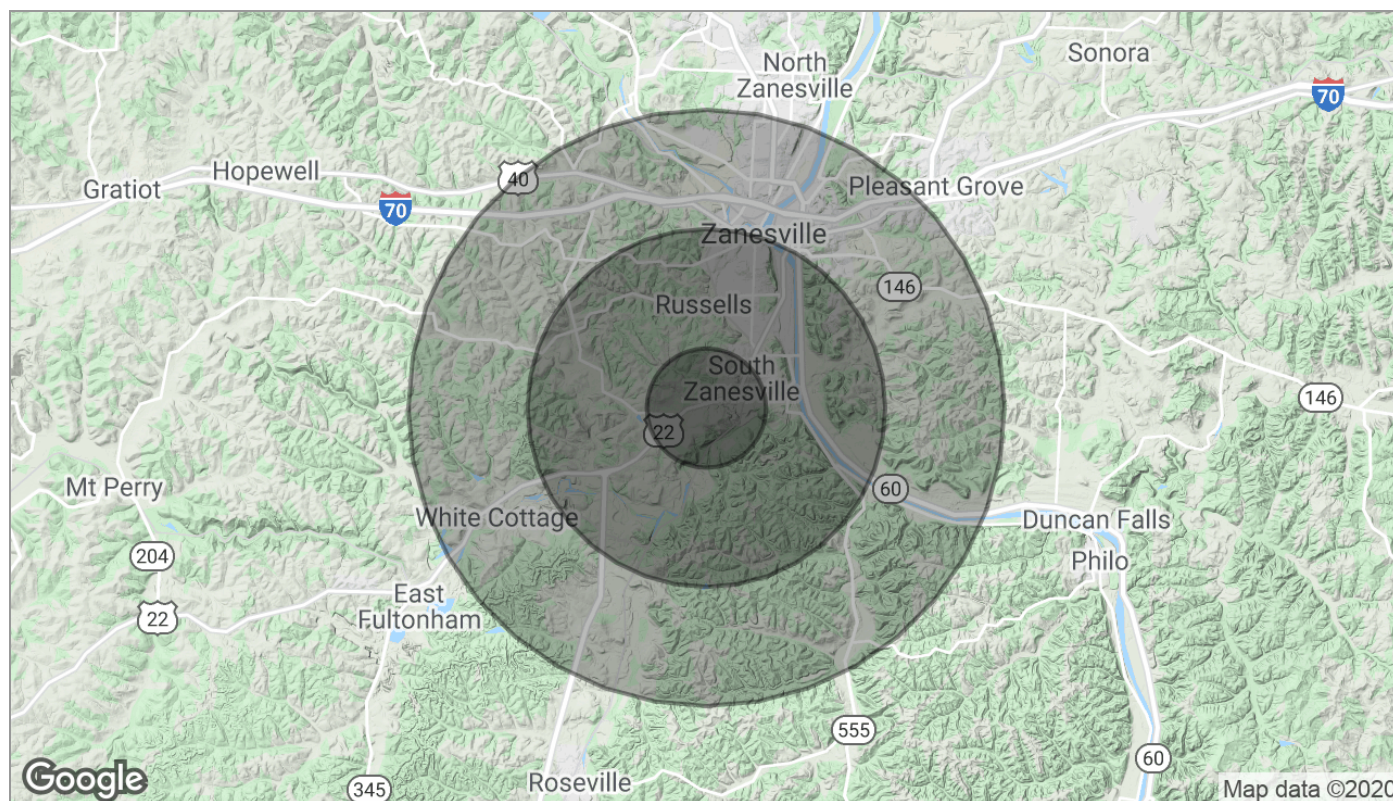
Sandy Simpson

614 629 5200 • gsimpson@ohioequities.com









Population

	1 Mile	3 Miles	5 Miles
TOTAL POPULATION	2,457	20,060	41,485
MEDIAN AGE	40.9	36.3	37.3
MEDIAN AGE (MALE)	38.9	33.7	35.3
MEDIAN AGE (FEMALE)	44.0	40.2	40.0

Households & Income

	1 Mile	3 Miles	5 Miles
TOTAL HOUSEHOLDS	1,032	7,994	16,674
# OF PERSONS PER HH	2.4	2.5	2.5
AVERAGE HH INCOME	\$47,890	\$40,786	\$41,999
AVERAGE HOUSE VALUE	\$80,049	\$80,768	\$95,033

Race

	1 Mile	3 Miles	5 Miles
% WHITE	94.7%	87.4%	87.7%
% BLACK	2.1%	7.1%	6.6%
% ASIAN	0.0%	0.0%	0.4%
% HAWAIIAN	0.0%	0.0%	0.0%
% INDIAN	0.0%	0.1%	0.3%
% OTHER	0.0%	0.6%	0.6%

Ethnicity

	1 Mile	3 Miles	5 Miles
% HISPANIC	0.3%	1.3%	1.3%

* Demographic data derived from 2010 US Census