

*Allied National Building  
4551 West 107th Street  
Overland Park, Kansas*





**LOCATION, LOCATION, LOCATION:** The corner of I-435 and Roe Boulevard in Overland Park, Kansas is the perfect identifiable site for your business.

**4551 W. 107TH STREET** is accessible to all points of the metro area and adjacent to the Roe Boulevard I-435 exit. It is the first exit West of the Missouri State Line, exit on I-435.

**THE BUILDING WAS BUILT IN 1984 AND COMPLETELY REMODELED IN 2008 WITH DESIGN BY HELIX ARCHITECTS + DESIGN. ADDITIONAL REFURBISHMENTS WILL BE COMPLETED IN 2019.** The building includes 84,397 rentable square feet on three floors. Inside, you will find a three-story atrium lobby with two glass passenger elevators and lobby stairs for convenient, easy access to the premises.

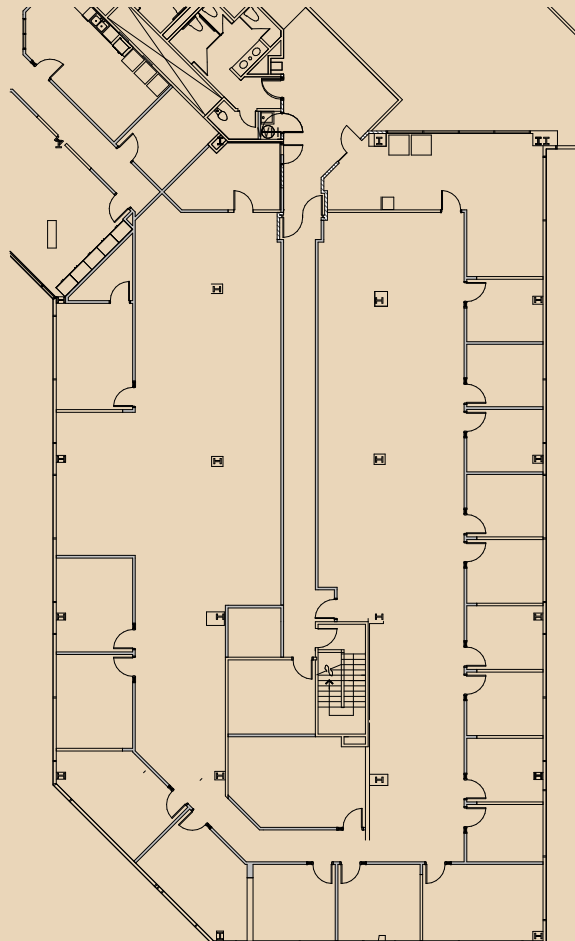


# Amenities

- Completely refurbished in 2008. Improvements include a new entrance, all new stone open lobby, restrooms, and common areas.
- Three-story building with full-height atrium.
- Two floating glass elevators.
- Covered parking available/total parking ratio: 4/1,000, including surface and covered parking.
- Walking distance to restaurants, retail, hotel, postal and other services nearby.
- Overland Park Convention Center and hotel located within two miles.
- Building common area indoor/outdoor break area. Vending area.
- Allied National is the on-site building owner.
- Internet Providers: AT&T, Time Warner, and Level III.



**Suite 310 - 9,577 RSF  
Divisible to 2,000 RSF**







**KH** Est. 1879 **Kessinger  
Hunter**

COMMERCIAL REAL ESTATE  
INDEPENDENTLY OWNED AND OPERATED

2600 Grand Blvd., Suite 700 | Kansas City, Missouri 64108

816.842.2690 | [www.kessingerhunter.com](http://www.kessingerhunter.com)

Information subject to verification and no liability for errors or omissions is assumed. Price subject to change. Updated 7/30/19.

**For Leasing Information:**

**Debbie Schulte, SIOR, Principal  
Office Brokerage**

**816.936.8549**

**[dschulte@kessingerhunter.com](mailto:dschulte@kessingerhunter.com)**