

1674

MASSACHUSETTS AVENUE

CAMBRIDGE, MASSACHUSETTS

CAMBRIDGE



THE
DARTMOUTH
COMPANY
www.dartco.com
617.262.6620

Scott Black
617.369.5902
sblack@dartco.com

Rachel Feeley
617.369.5908
rfelley@dartco.com

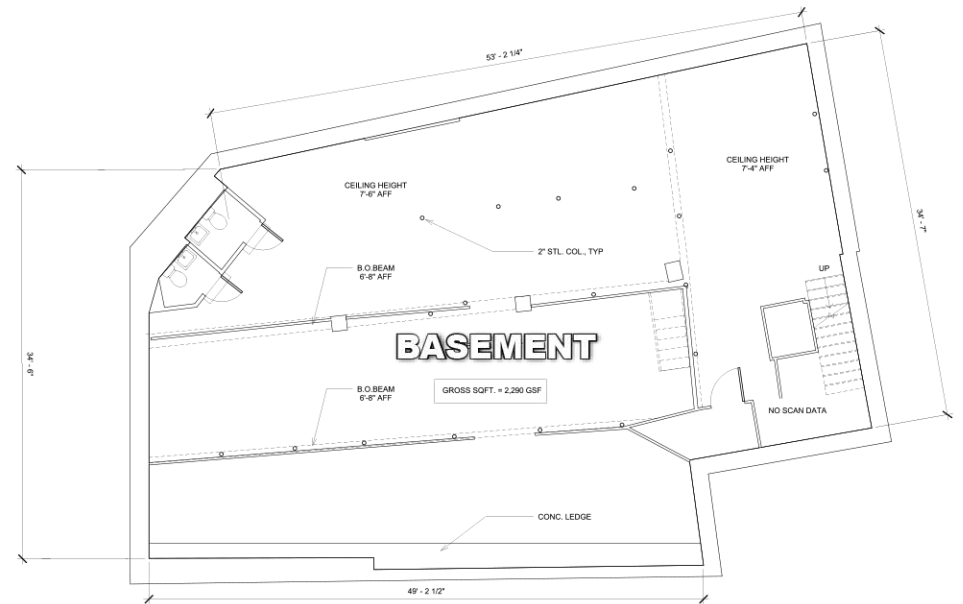
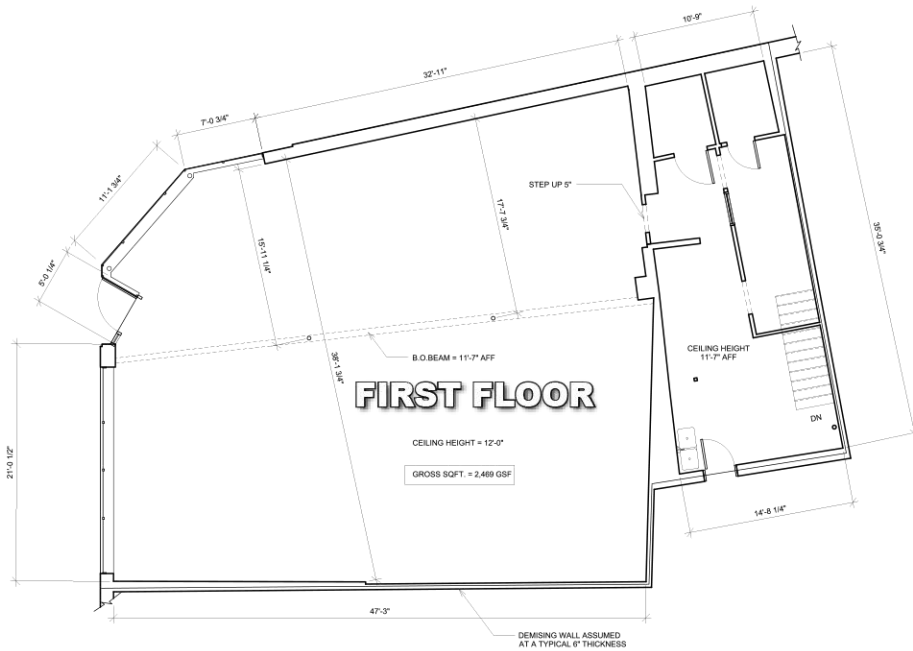
SIZE | +/-2,469 SF

FACTS

- Premier corner location located on Cambridge's major thoroughfare
- The site is located on Cambridge's major thoroughfare
- In addition to the foot traffic, the vehicular traffic is over 20,000 cars per day.
- 9 minute walk to Porter Square T Stop and a 12 minute walk to Harvard Square T Stop.

DEMOGRAPHICS

	¼ MILE	½ MILE	1 MILE
Daytime Population	5,750	15,193	64,381
Population	6,917	15,324	62,054
Med HH Income	\$75,768	\$85,231	\$92,036



NEARBY RETAILERS



**AVAILABLE
NOW**



AREA RETAIL



PORTER
8,850 DAILY RIDERS

SOMERVILLE
Population: 116,565
Median HH Income: \$84,750
Daytime Population: 166,595

SITE
1674 MASSACHUSETTS AVENUE

CAMBRIDGE
Population: 116,565
Median HH Income: \$84,750
Daytime Population: 166,595

HARVARD
23,199 DAILY RIDERS