

WESTWOOD, NJ - STREET RETAIL

209 WESTWOOD AVE, WESTWOOD, NJ 07675

POTENTIAL RESTAURANT SPACE



OFFERING SUMMARY

Available SF: 2,500 - 5,237 SF
Lease Rate: Call for Details
Building Size: 5,237 SF

NEIGHBORING TENANTS



PROPERTY OVERVIEW

Available Immediately: Retail space available for lease in Westwood NJ

PROPERTY HIGHLIGHTS

- Available Immediately
- 2,500 SF End Cap with Basement
- Division Possible
- Corner Location
- Located in the Heart of the Downtown Retail Corridor

FOR MORE INFORMATION CONTACT:

NEIL GOLDSTEIN
201.703.9700 x112
ngoldstein@thegoldsteingroup.com

DONALD GOLDSTEIN
201.703.9700 x117
dgoldstein@thegoldsteingroup.com

45 EISENHOWER DRIVE | SUITE 500 | PARAMUS, NJ 07652

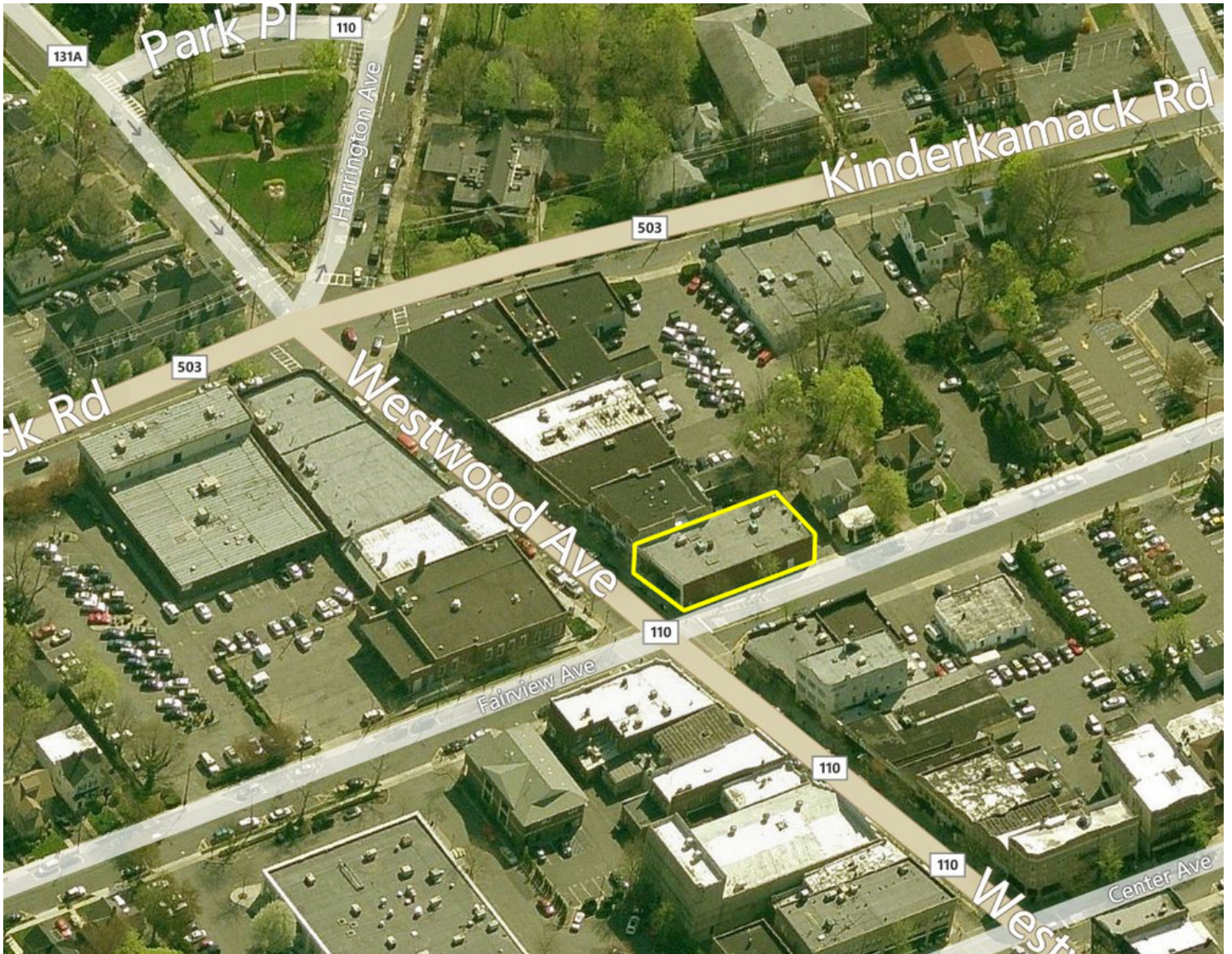
All information is from sources deemed reliable and is submitted subject to errors, omissions, change of price, terms, rental, prior sale and withdrawal without notice.



THEGOLDSTEINGROUP.COM

WESTWOOD, NJ - STREET RETAIL

209 WESTWOOD AVE, WESTWOOD, NJ 07675



FOR MORE INFORMATION CONTACT:

NEIL GOLDSTEIN
201.703.9700 x112
ngoldstein@thegoldsteingroup.com

DONALD GOLDSTEIN
201.703.9700 x117
dgoldstein@thegoldsteingroup.com

45 EISENHOWER DRIVE | SUITE 500 | PARAMUS, NJ 07652

All information is from sources deemed reliable and is submitted subject to errors, omissions, change of price, terms, rental, prior sale and withdrawal without notice.



THEGOLDSTEINGROUP.COM

WESTWOOD, NJ - STREET RETAIL
209 WESTWOOD AVE, WESTWOOD, NJ 07675



FOR MORE INFORMATION CONTACT:

NEIL GOLDSTEIN
201.703.9700 x112
ngoldstein@thegoldsteingroup.com

DONALD GOLDSTEIN
201.703.9700 x117
dgoldstein@thegoldsteingroup.com

45 EISENHOWER DRIVE | SUITE 500 | PARAMUS, NJ 07652

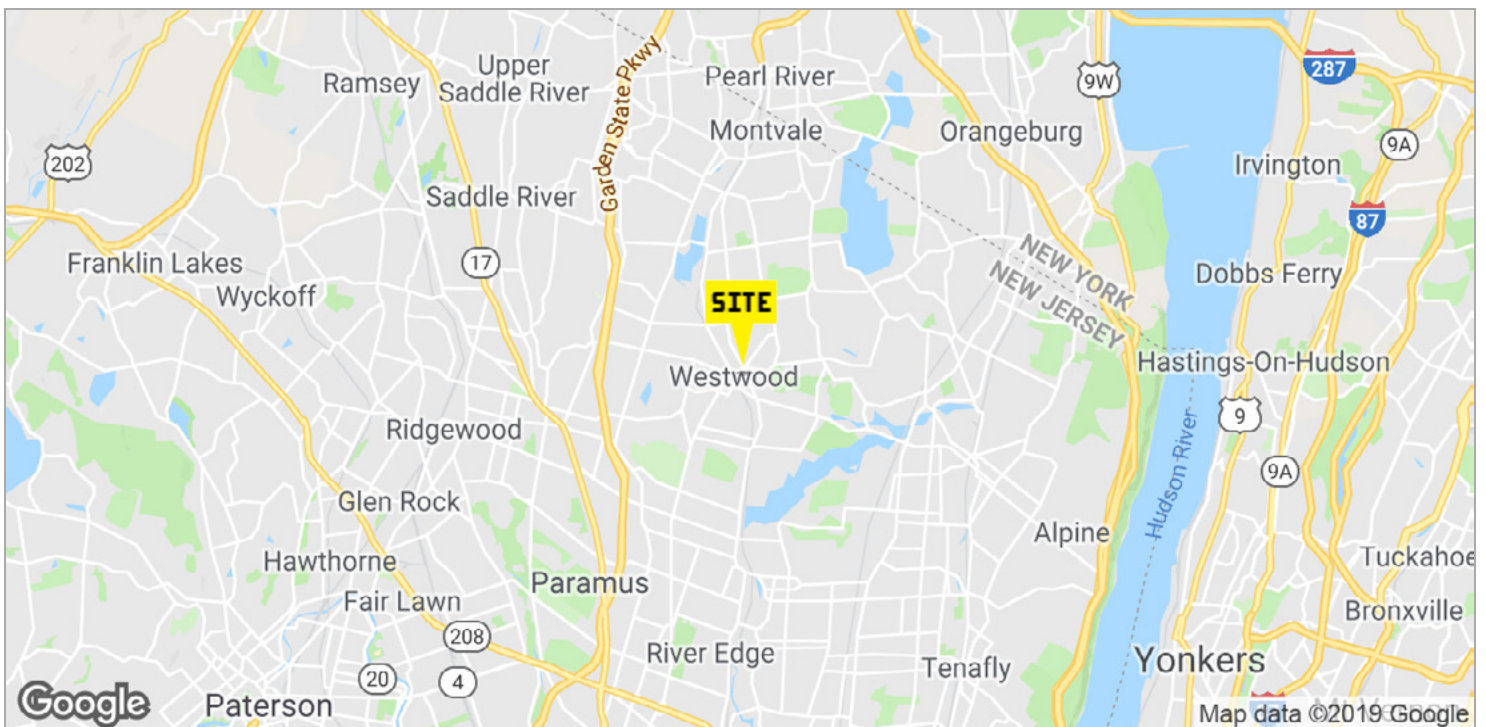
All information is from sources deemed reliable and is submitted subject to errors, omissions, change of price, terms, rental, prior sale and withdrawal without notice.



THEGOLDSTEINGROUP.COM

WESTWOOD, NJ - STREET RETAIL

209 WESTWOOD AVE, WESTWOOD, NJ 07675



FOR MORE INFORMATION CONTACT:

NEIL GOLDSTEIN
 201.703.9700 x112
 ngoldstein@thegoldsteingroup.com

DONALD GOLDSTEIN
 201.703.9700 x117
 dgoldstein@thegoldsteingroup.com



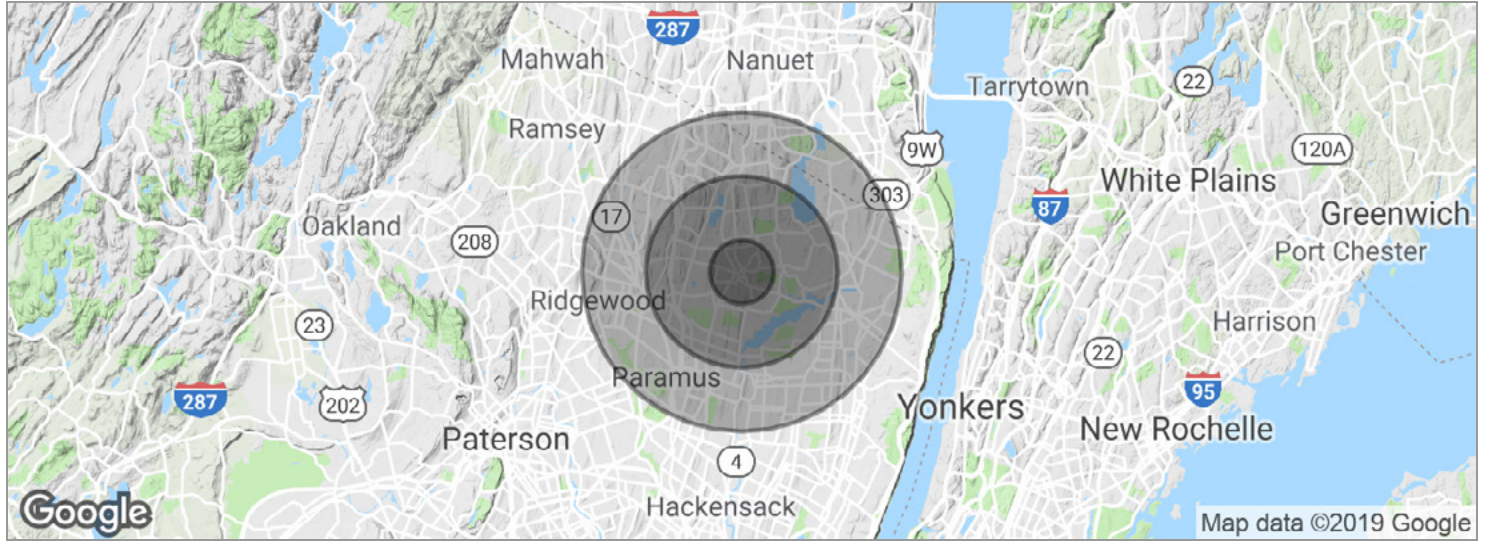
45 EISENHOWER DRIVE | SUITE 500 | PARAMUS, NJ 07652

THEGOLDSTEINGROUP.COM

All information is from sources deemed reliable and is submitted subject to errors, omissions, change of price, terms, rental, prior sale and withdrawal without notice.

WESTWOOD, NJ - STREET RETAIL

209 WESTWOOD AVE, WESTWOOD, NJ 07675



POPULATION	1 MILE	3 MILES	5 MILES
Total population	12,970	81,716	237,674
Median age	42.1	43.2	42.7
Median age (Male)	41.1	42.5	41.8
Median age (Female)	43.0	43.8	43.6
HOUSEHOLDS & INCOME	1 MILE	3 MILES	5 MILES
Total households	5,105	28,664	82,204
# of persons per HH	2.5	2.9	2.9
Average HH income	\$104,949	\$129,354	\$128,187
Average house value	\$501,936	\$591,294	\$609,606

* Demographic data derived from 2010 US Census

FOR MORE INFORMATION CONTACT:

NEIL GOLDSTEIN
201.703.9700 x112
ngoldstein@thegoldsteingroup.com

DONALD GOLDSTEIN
201.703.9700 x117
dgoldstein@thegoldsteingroup.com



45 EISENHOWER DRIVE | SUITE 500 | PARAMUS, NJ 07652

THEGOLDSTEINGROUP.COM

All information is from sources deemed reliable and is submitted subject to errors, omissions, change of price, terms, rental, prior sale and withdrawal without notice.