

LAKEVIEW BUILDING

Medical
Dental

3216 NE 45TH PLACE | SEATTLE, WA

PROPERTY HIGHLIGHTS

- ✓ Ample parking
- ✓ Close proximity to U Village, restaurants, Children's Hospital & UW



JENNIFER ARVISO
206.659.2151
jenny@incityinc.com

COURTNEY BUCK
206.499.1794
courtney@incityinc.com



CHRIS LANGER | 425.646.5228
lander@broderickgroup.com

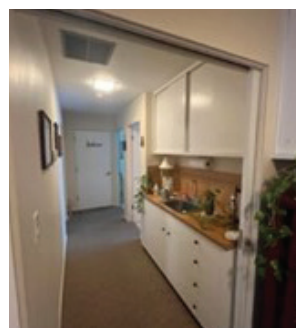
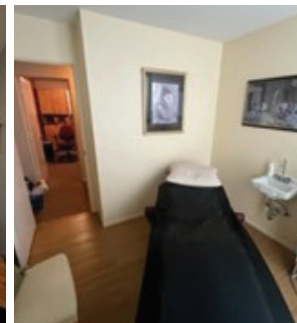
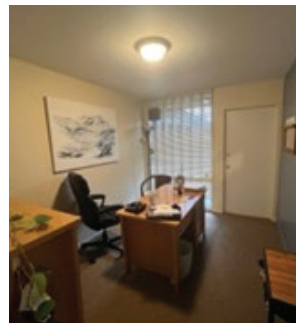
LAKEVIEW Medical DENTAL BUILDING

3216 NE 45TH PLACE | SEATTLE, WA

AVAILABLE SPACE

Floor / Suite	Square Footage	Availability	Comments
3 / 301	962 RSF	4/1/2024	» Monthly Base Rent: \$35 - \$40/RSF, NNN (\$17.45/RSF)

The information contained herein has been given to us by the owner or sources that we deem reliable. We have no reason to doubt its accuracy, but we do not guarantee it. Prospective tenants should carefully verify all information contained herein.



JENNIFER ARVISO
206.659.2151
jenny@incityinc.com

COURTNEY BUCK
206.499.1794
courtney@incityinc.com



CHRIS LANGER | 425.646.5228
lander@broderickgroup.com

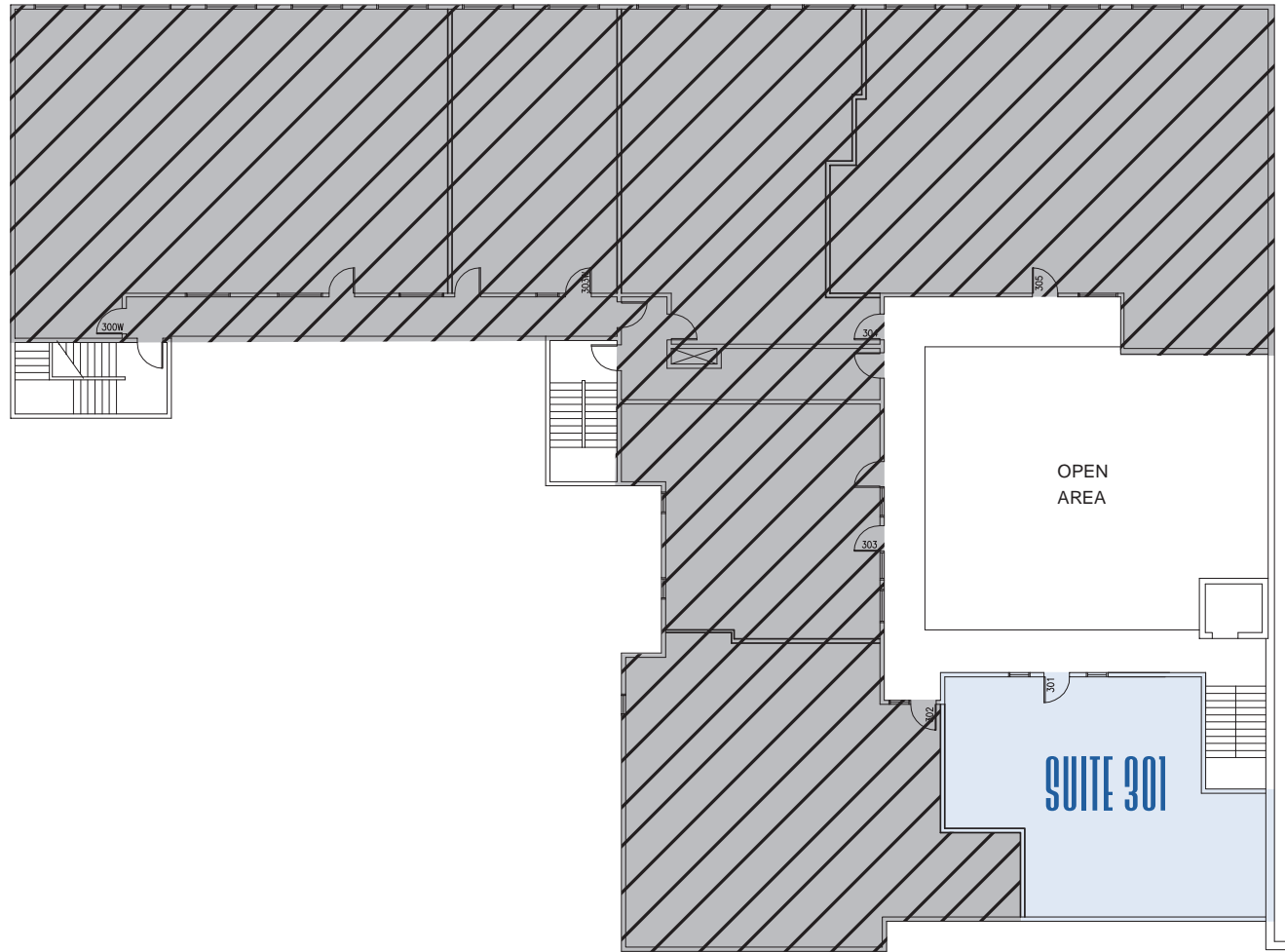
LAKEVIEW Medical DENTAL BUILDING

3216 NE 45TH PLACE | SEATTLE, WA

SUITE 301

962 RSF

AVAILABLE 4/1/2024



JENNIFER ARVISO
206.659.2151
jenny@incityinc.com

COURTNEY BUCK
206.499.1794
courtney@incityinc.com



CHRIS LANGER | 425.646.5228
lander@broderickgroup.com

LAKEVIEW Medical DENTAL BUILDING

3216 NE 45TH PLACE | SEATTLE, WA

LOCATION



JENNIFER ARVISO
206.659.2151
jenny@incityinc.com

COURTNEY BUCK
206.499.1794
courtney@incityinc.com



CHRIS LANGER | 425.646.5228
lang@broderickgroup.com